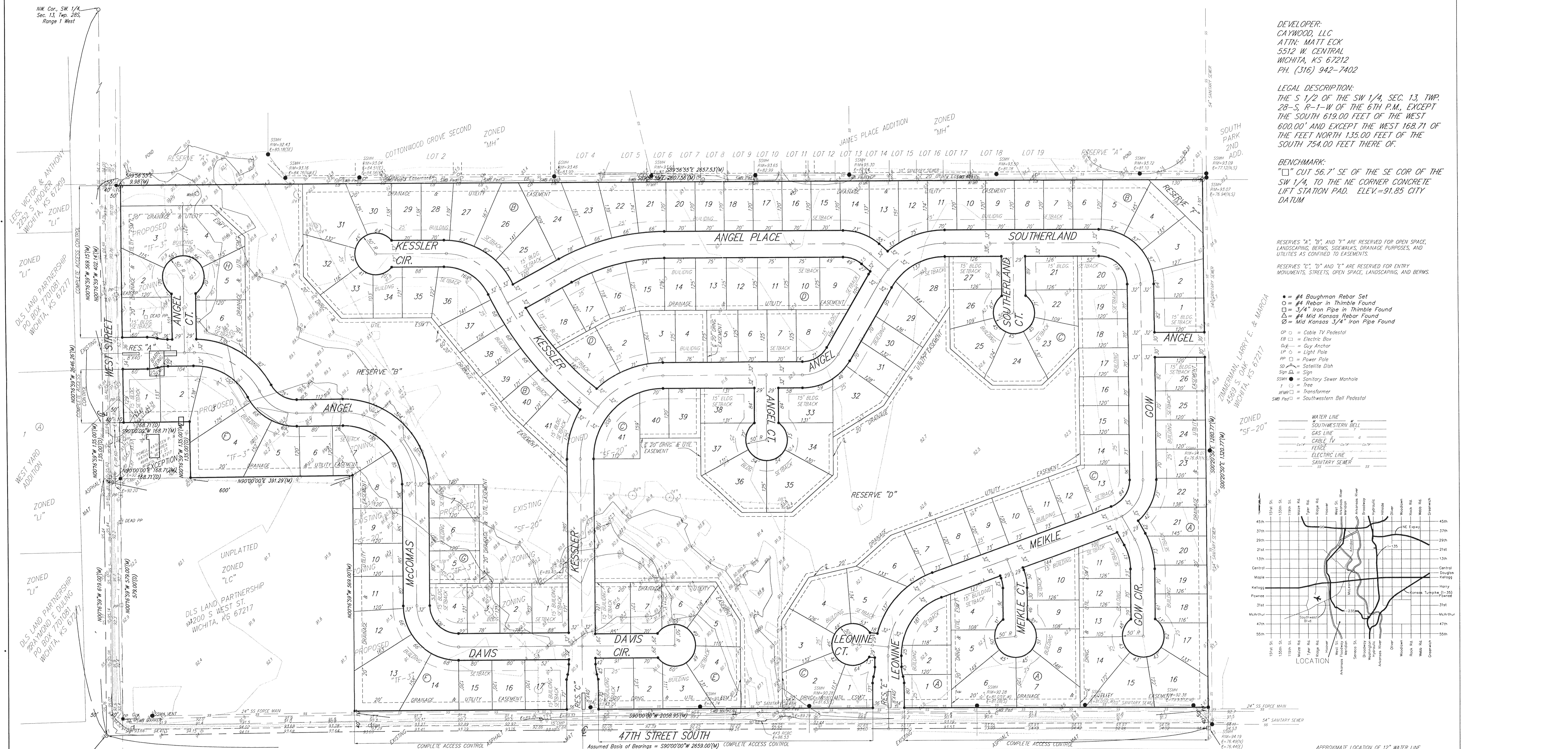


PRELIMINARY PLAT
ANGEL FIRE
 AN ADDITION TO WICHITA, SEDGWICK COUNTY, KANSAS



DEVELOPER:
 CAYWOOD, LLC
 ATTN: MATT ECK
 5512 W. CENTRAL
 WICHITA, KS 67212
 PH. (316) 942-7402

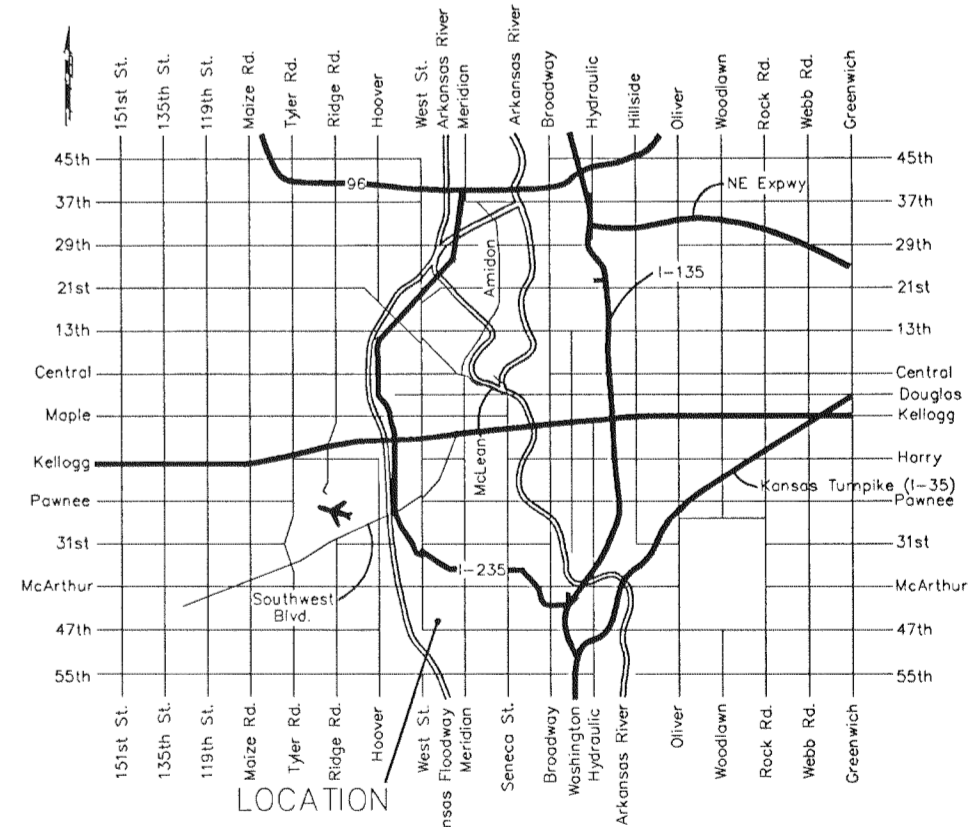
LEGAL DESCRIPTION:
 THE S 1/2 OF THE SW 1/4, SEC. 13, TWP. 28-S, R-1-W OF THE 6TH P.M., EXCEPT THE SOUTH 619.00 FEET OF THE WEST 600.00' AND EXCEPT THE WEST 168.71' OF THE FEET NORTH 135.00 FEET OF THE SOUTH 754.00 FEET THERE OF.

BENCHMARK:
 "□" CUT 56.7' SE OF THE SE COR OF THE SW 1/4, TO THE NE CORNER CONCRETE LIFT STATION PAD. ELEV.=91.85 CITY DATUM

RESERVES "A", "B", AND "C" ARE RESERVED FOR OPEN SPACE, LANDSCAPING, BERMS, SIDEWALKS, DRAINAGE PURPOSES, AND UTILITIES AS CONFINED TO EASEMENTS.
 RESERVES "D", "E", AND "F" ARE RESERVED FOR ENTRY MONUMENTS, STREETS, OPEN SPACE, LANDSCAPING, AND BERMS.

- = #4 Baughman Rebar Set
- = #4 Rebar in Thimble Found
- = 3/4" Iron Pipe in Thimble Found
- = #4 Mid Kansas Rebar Found
- = Mid Kansas 3/4" Iron Pipe Found
- = Cable TV Pedestal
- EB □ = Electric Box
- GA = Guy Anchor
- LP ○ = Light Pole
- PP ○ = Power Pole
- SD ○ = Satellite Dish
- Sign ○ = Sign
- SSM ● = Sanitary Sewer Manhole
- T ○ = Tree
- TRM □ = Transformer
- SWB Ped □ = Southwestern Bell Pedestal

- WATER LINE
- SOUTHWESTERN BELL
- GAS LINE
- CABLE TV
- FENCE
- ELECTRIC LINE
- SANITARY SEWER



3RD ADDITION TO CHITWOOD ESTATES
 2ND ADDITION TO CHITWOOD ESTATES
 ZONED "SF-20" TO 2 CHITWOOD ESTATES
 CHITWOOD ZONED "SF-20"
 RENOLLET, SHIRLEY D. 3245 W. 47TH. ST. S. WICHITA, KS 67217
 SPRINGS, FRED J. ETUX & KELLY J. SPRINGS 1/2 MARK W. & KELLY J. SPRINGS 6601 W. 35TH. ST. S. WICHITA, KS 67215
 VERSAW ADDITION ZONED "SF-20"
 ARCHER, JOHN CALVIN 3315 W. 47TH. ST. WICHITA, KS 67217
 RENOLLET, CLINTON A. 3245 W. 47TH. ST. S. WICHITA, KS 67217
 ZONED "SF-20" WAHL, GLADYS 3/8 KENDALL WAHL 3201 W. 47TH S. WICHITA, KS 67217