

PRELIMINARY PLAT

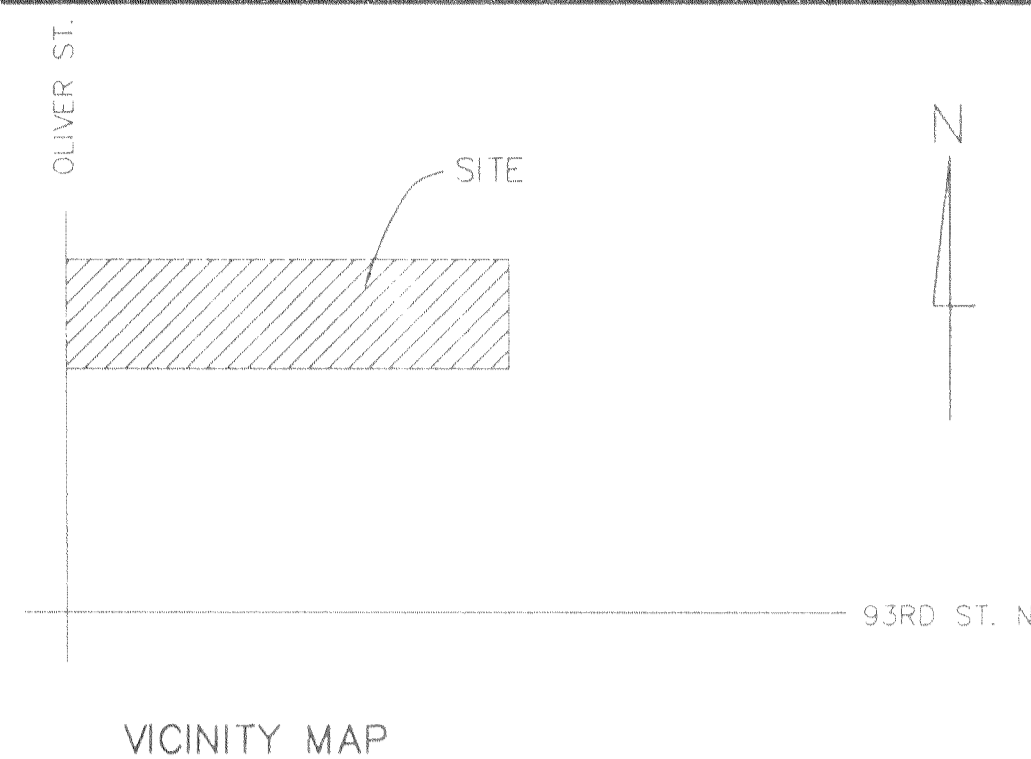
of

ANGEL'S LANDING

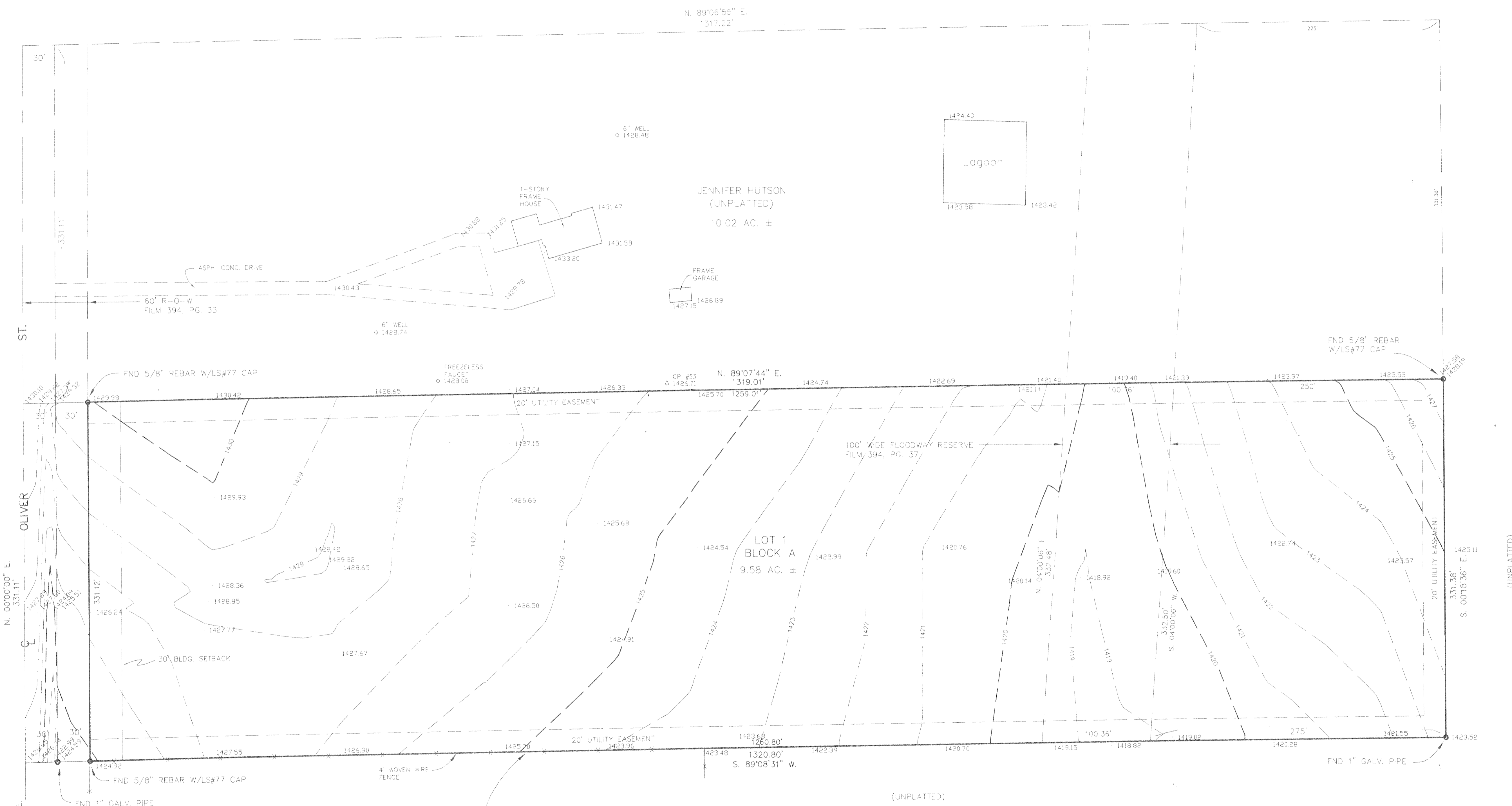
An Addition to Sedgwick County, Kansas

LEGAL DESCRIPTION

THE SOUTH HALF OF THE NORTH HALF OF THE SOUTH HALF OF THE WEST HALF OF THE SOUTHWEST QUARTER OF SECTION 24, TOWNSHIP 25 SOUTH, RANGE 1 EAST OF THE 6TH P.M., SEDGWICK COUNTY, KANSAS.



1" = 50'  
#02-C02-SD  
o = PROPERTY CORNER (FOUND)



OLIVER ST.  
N. 00°00'00" E. 331.11'  
N. 00°00'00" E. 662.21'

(UNPLATTED)

93RD ST.  
S.W. COR., S.W. 1/4, SEC. 24-25-1E., OF THE 6TH P.M., SEDGWICK CO., KS.

BENCHMARK  
60D SPIKE IN HLP, 41.5' NW OF THE S.W. CORNER OF SEC. 24. ELEV. = 1422.30 N.G.V.D.



MOEHRING & ASSOCIATES  
CONSULTING ENGINEERS  
433 S. HYDRAULIC  
WICHITA, KS.  
263-8291

BASED UPON THE INFORMATION CONTAINED WITHIN THE FLOOD INSURANCE RATE MAP (FIRM), COMMUNITY-PANEL NUMBER 200321 0075 A, CITY OF WICHITA, KANSAS, SUBJECT PROPERTY IS IN ZONE C, AND DOES NOT LIE WITHIN THE 100 YEAR FLOOD PLAIN.

C:\SC2000\WORK\HUTSON.DWG