

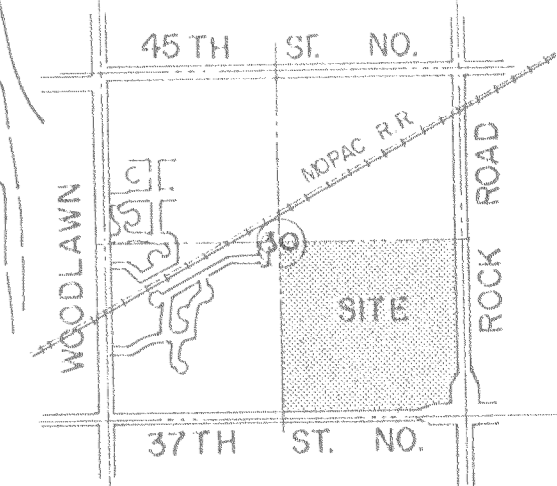
DRAINAGE & UTILITY PLAN

MULBERRY EAST THIRD

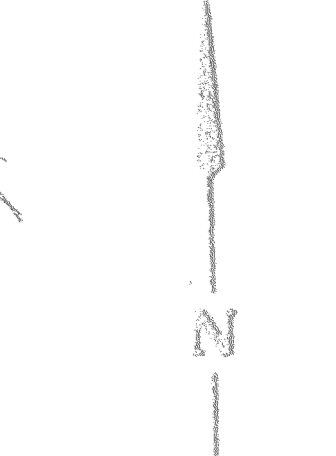
AN ADDITION TO WICHITA, SEDGWICK COUNTY, KANSAS

E 1/4 Corner, Sec. 30
T26S, R2E, 6th PM

R=928.00'
Δ=10°28'36"
L=169.69'
Brg=S20°47'10"W
Chd=169.45'

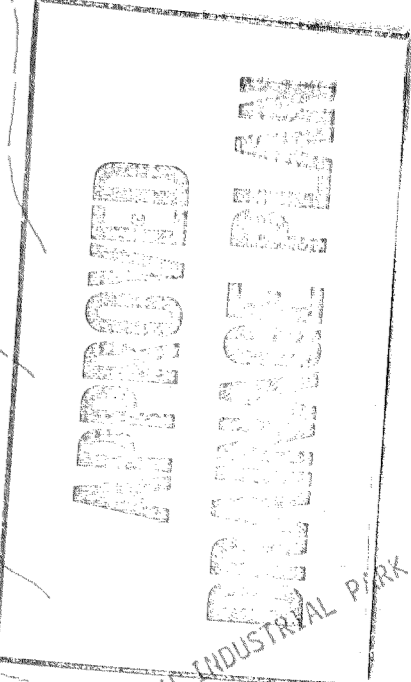


LOCATION MAP



SCALE 1" = 100'

R=928.00'
Δ=10°28'36"
L=169.69'
Brg=S20°47'10"W
Chd=169.45'



HT - TECHNICAL PARK 210

DATE	DESCRIPTION	BY	CHKD

MULBERRY EAST THIRD

MID-KANSAS ENGINEERING CO. PLANTERS PA
1000 W. 10th St. Suite 400
WICHITA, KANSAS 67202

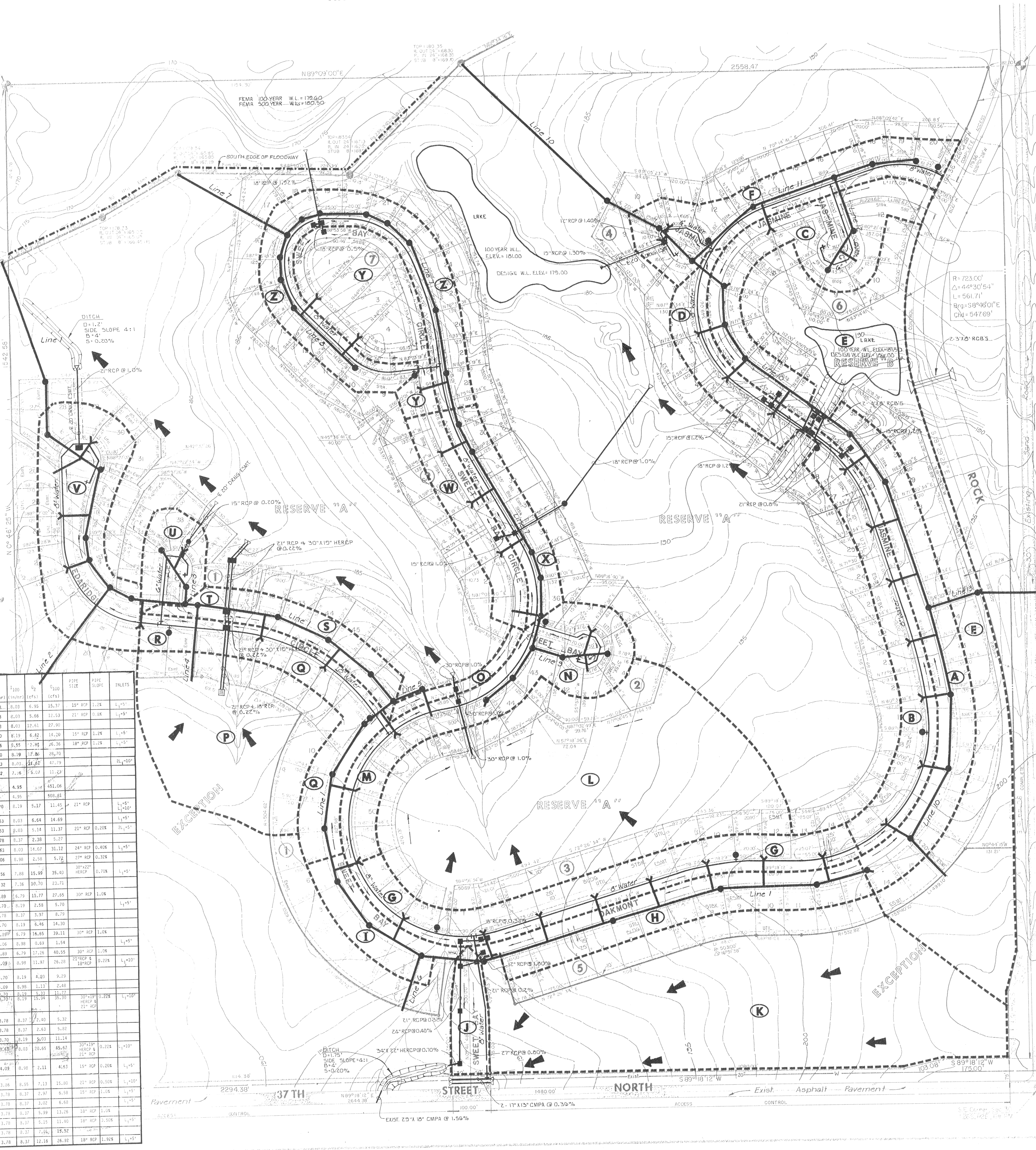
Center of Sec. 30
T26S, R2E

FEMA 100 YRR W.L. = 179.60
FEMA 500 YRR W.L. = 180.50

BENCH MARKS

- B.M. #1: CITY STD. 30' N & 34' W. OF 1/4 SEC. COR. @ 37TH & GOVERNOR ELEV. = 185.54
- B.M. #2: RR SPIKE IN W FACE OF W LEG OF "H" POLE ± 2000' N. OF 37TH & GOVERNOR ELEV. = 179.24
- B.M. #3: TBM RR SPIKE IN S. FACE OF CORNER FENCE POST ± 50' E OF N QUARTER COR. SEC. 29-26-2E. ELEV. = 189.79
- B.M. #4: CITY STD 44' S & 48' W OF CENTER LINE OF 37TH & ROCK ROAD. ELEV. = 204.11

MULBERRY EAST THIRD	AREA (ACRES)	AREA (ACCU.)	C	T _c (min)	T _c (hr)	Q ₁₀₀ (cfs)	Q ₂ (cfs)	Q ₁₀₀ (cfs)	PIPE SIZE	PIPE SLOPE	INLETS
A	3.10	0.6	20	3.63	6.03	8.95	15.37	15" RCP	1.2%	L ₁ ±5'	
B	2.20	0.6	20	3.63	6.03	8.66	12.33	21" RCP	0.8%	L ₁ ±5'	
C	2.89	5.79	0.6	20	3.63	6.03	12.61	15" RCP	1.2%	L ₁ ±5'	
D	1.24	0.6	17	3.36	5.55	7.95	16.36	18" RCP	1.2%	L ₁ ±5'	
E	8.31	4.13	0.6	19	3.70	6.19	6.42	15" RCP	1.0%	L ₁ ±5'	
F	142.38	8.92	0.6	20	3.63	6.03	21.67	24" RCP	0.2%	L ₁ ±10'	
G	2.33	0.64	45	4.58	7.66	11.23	451.08	15" RCP	1.0%	L ₁ ±5'	
H	2.09	0.6	19	3.70	6.19	5.17	11.45	21" RCP	0.2%	L ₁ ±10'	
I	2.36	0.6	20	3.63	6.03	6.64	14.69	21" RCP	0.20%	L ₁ ±5'	
J	1.09	6.16	0.6	20	3.63	6.03	14.07	24" RCP	0.40%	L ₁ ±5'	
K	0.67	0.6	15	4.06	6.38	2.58	5.72	27" RCP	0.30%	L ₁ ±5'	
L	10.74	7.13	0.63	21	3.56	7.88	15.99	30" RCP	0.70%	L ₁ ±5'	
M	10.18	0.3	25	3.32	7.38	10.70	23.71	30" RCP	1.0%	L ₁ ±5'	
N	1.15	0.60	19	3.70	6.19	2.58	5.70	30" RCP	1.0%	L ₁ ±5'	
O	1.75	0.60	18	3.78	6.37	3.97	8.79	30" RCP	1.0%	L ₁ ±5'	
P	0.18	2.013	0.60	19	3.70	6.19	6.45	30" RCP	1.0%	L ₁ ±5'	
Q	4.18	13.09	0.44	30	2.89	6.79	16.65	39.11	30" RCP	1.0%	L ₁ ±5'
R	1.89	0.46	0.6	15	4.06	6.38	0.89	1.54	30" RCP	1.0%	L ₁ ±5'
S	0.46	2.35	0.6	19	3.70	6.19	0.33	0.75	30" RCP	1.0%	L ₁ ±5'
T	1.06	6.53	0.66	19	3.70	6.19	12.14	30" RCP	0.2%	L ₁ ±10'	
U	0.86	1.32	0.6	19	3.70	6.19	30.03	45.67	30" RCP	0.2%	L ₁ ±10'
V	3.08	7.85	0.66	20	3.63	6.03	20.65	45.67	30" RCP	0.2%	L ₁ ±10'
W	1.31	0.6	18	3.78	6.37	2.63	5.82	30" RCP	1.0%	L ₁ ±5'	
X	1.13	0.6	18	3.78	6.37	3.02	6.50	30" RCP	1.0%	L ₁ ±5'	
Y	2.27	0.6	18	3.78	6.37	5.15	11.49	18" RCP	2.50%	L ₁ ±5'	
Z	3.99	0.6	18	3.78	6.37	7.04	15.32	18" RCP	1.9%	L ₁ ±5'	



Pavement

37 TH STREET

SWEEP DRIVE

PAK MONT

NORTH

EXCEPTION

ROAD

BM 4