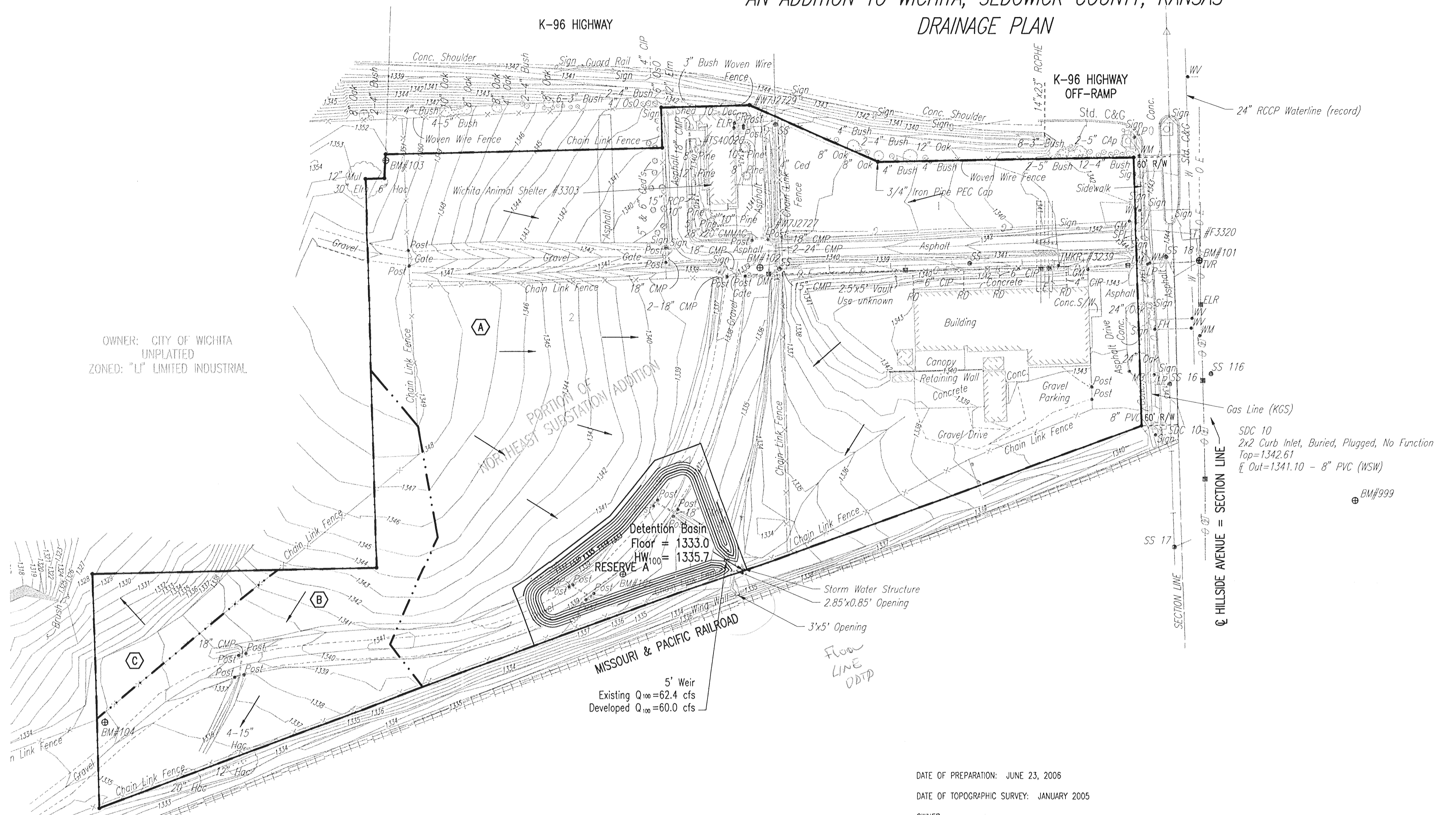


ANIMAL SERVICES CAMPUS

AN ADDITION TO WICHITA, SEDGWICK COUNTY, KANSAS

DRAINAGE PLAN



OWNER: CITY OF WICHITA
UNPLATTED
ZONED: "LI" LIMITED INDUSTRIAL

SCALE: 1" = 100'
• = 1/2" REBAR W/PEC CAP UNLESS OTHERWISE NOTED

LEGEND

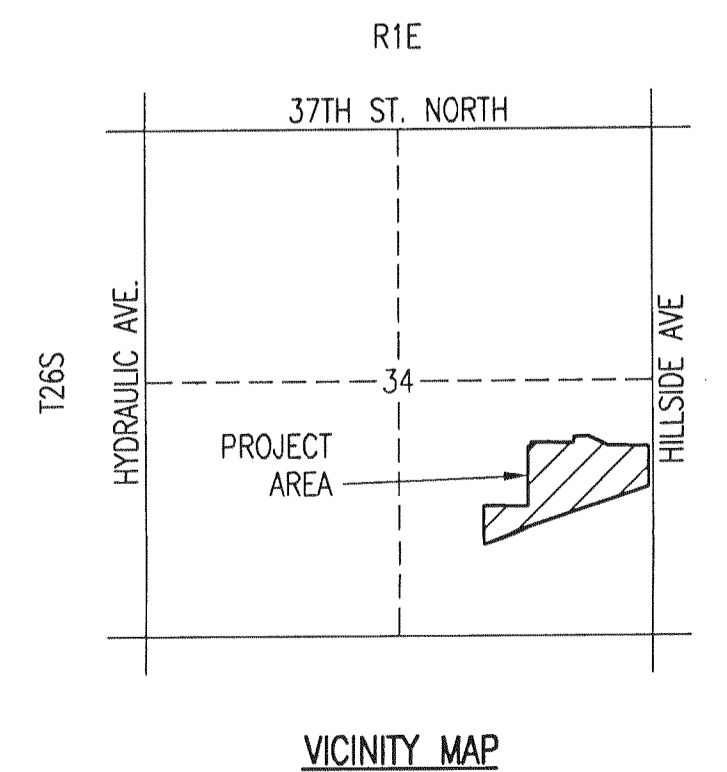
- A BASIN IDENTIFIER
- BASIN BOUNDARY
- MINOR STORM WATER FLOW

UNDER EXISTING CONDITIONS, THE SITE CONSISTS OF A 22.9 ACRE LOT. THE LOT IS DIVIDED INTO 3 BASINS (SHOWN AS BASINS A, B & C). BASINS B & C WILL NOT CHANGE WITH THE PLANNED DEVELOPMENT. BASIN A CAN CURRENTLY BE CLASSIFIED AS ABOUT 35% LIGHT INDUSTRIAL AND 65% UNDEVELOPED URBAN AREA. AT THE TIME OF REDEVELOPMENT, BASIN A CAN BE CLASSIFIED AS ABOUT 70% LIGHT INDUSTRIAL AND 30% UNDEVELOPED. *SEE SUPPORTING CALCULATIONS FOR HYDROLOGY.

DATE OF PREPARATION: JUNE 23, 2006
DATE OF TOPOGRAPHIC SURVEY: JANUARY 2005
OWNER: WICHITA, KANSAS
SUBDIVIDER: PROFESSIONAL ENGINEERING CONSULTANTS, P.A.
303 S. TOPEKA
WICHITA, KS 67202

BENCHMARKS:

- BM #101 - Found Railroad Spike in W face of highline power pole on E side of Hillside Avenue near #3320 N. Hillside entrance drive
MSL Elev. = 1344.795
- BM #102 - Set "T" Post 27.5' S of center entrance drive and 36.20' E of E face of Animal Shelter Building
MSL Elev. = 1338.81
- BM #103 - Set "T" Post 10' S of CP#1003, NW property corner
MSL Elev. = 1352.125
- BM #104 - Set "T" Post 13'± E of W line and 140'± N of SW property corner
MSL Elev. = 1335.465
- BM #105 - Set "T" Post 57'± N of fence line along S property corner line 22' S of Haul Road 275'± WNW of property corner #102
MSL Elev. = 1338.32



Scaled 07-19-2006 7:35:16 AM by BMM
 Plot Scale 1:100 07-19-2006 8:42:34 AM by BMM
 C:\2005\05028\002\05028-002-Drainage-Preliminary