



As Built Elevations:
 Handwritten elevations are "As Built" elevations as surveyed for the sanitary sewer construction. Builders should check "As Built" elevations listed and always provide for a minimum of 2% slope away from the rear of a home to the lowest rear lot corner. Additionally, 1% slope should be provided along the rear easement from lot line to lot line. Any fills or cuts in the rear easements by builders shall be done in a way that will not interfere with the overall drainage scheme.

SCALE 1"=100'

LEGEND

- INDICATES NO VIEWOUT BASEMENT
 (F-Indicates Top of Foundation Wall Elevation)
 (G-Indicates Garage Floor Elevation)
- INDICATES PROPOSED VIEW OUT BASEMENT
 (V-Indicates Ground Elevation @ Rear Wall)
 (F-Indicates Top of Foundation Wall Elevation)
 (G-Indicates Garage Floor Elevation)
- INDICATES PROPOSED WALK OUT BASEMENT
 (W-Indicates Basement Floor Elevation)
 (F-Indicates Top of Foundation Wall Elevation)
 (G-Indicates Garage Floor Elevation)

BENCHMARKS

1. "□" Out on South Hub Guard of R.C.B.C. 26' South & 94' West of NW Cor. Sec. 35 Elev. 1311.90
2. Rail Road Spike in Power Pole. Approximately 25' South & 30' East of W. 1/4 Cor. Sec. 35 Elev. 1349.65

NOTES

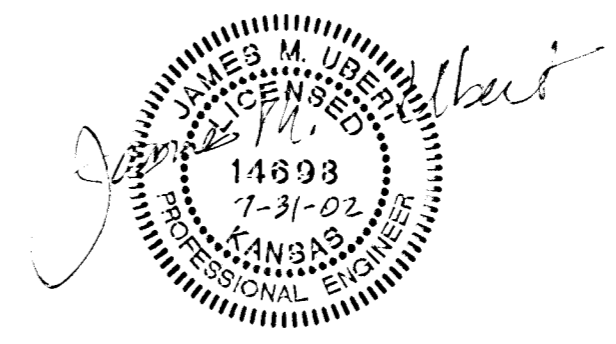
1. Add 1300 to Finish Elevations to get M.S.L. Datum.
2. Front Lot Corner Elevations are shown in street. Front Lot Corner Elevations are 0.5 feet above Top of Curb Elevation. (Top of Curb Elevations are not shown).
3. Garage Floor Elevations are set 3' above highest Front Lot Corner Elevation (Typical).
4. This plan was prepared for drainage purposes only. The existing ground line may have been changed in some areas within this addition. Grade changes in these areas may not have been made with engineered fills. Builders may need to obtain foundation advice from a Geotechnical Engineer prior to construction.

LOT GRADING PLAN
EQUESTRIAN ESTATES

Developer: John Greenstreet
 J.D.G., LLC
 12221 E. Central
 Wichita, KS 67206

Engineer: Poe and Associates of Kansas, Inc.
 5940 E. Central
 Wichita, KS 67203

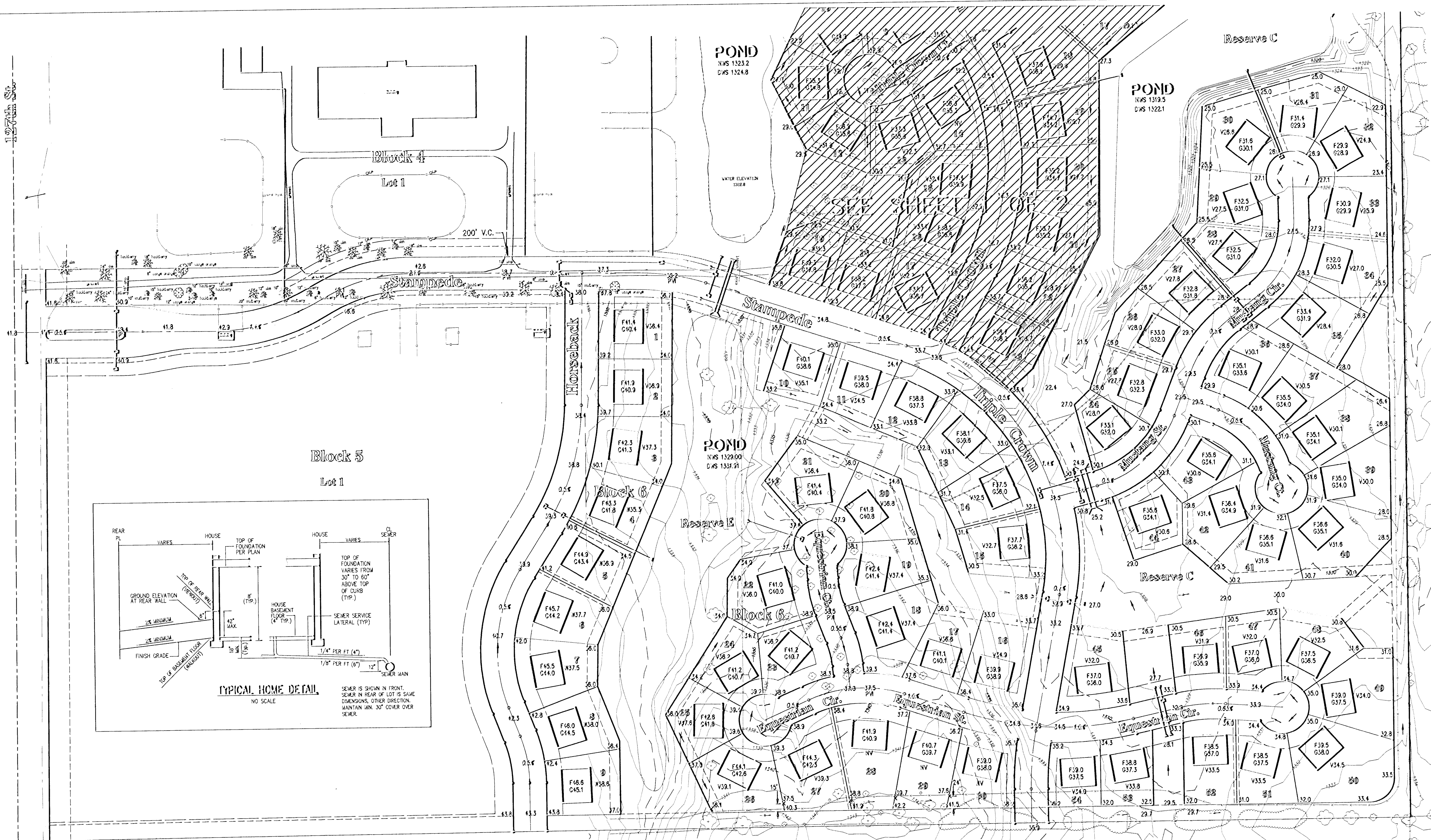
An Addition to Wichita - Sedgwick County, Kansas
 (Associated Zone Case PUD 2000-0001)



POE & ASSOCIATES OF KANSAS, INC.
 CONSULTING ENGINEERS
 5940 E. Central Suite 200 • Wichita, KS 67208-4242
 Phone 316.655-4114 • FAX 316.685-4444

DATE: JULY 13, 2001 Revised: November 11, 2004
 Revised: JULY 31, 2002 Revised: September 30, 2005
 Revised: April 14, 2003 Revised: October 10, 2007
 Revised: January 5, 2004

C:\APPS\DATA\POE\66A\lot_grading1.dwg F:\ Aug 30 08:46:33 2002 Jim Ubert, P.E. - Poe & Associates of Kansas, Inc.



SCALE 1"=100'

LEGEND

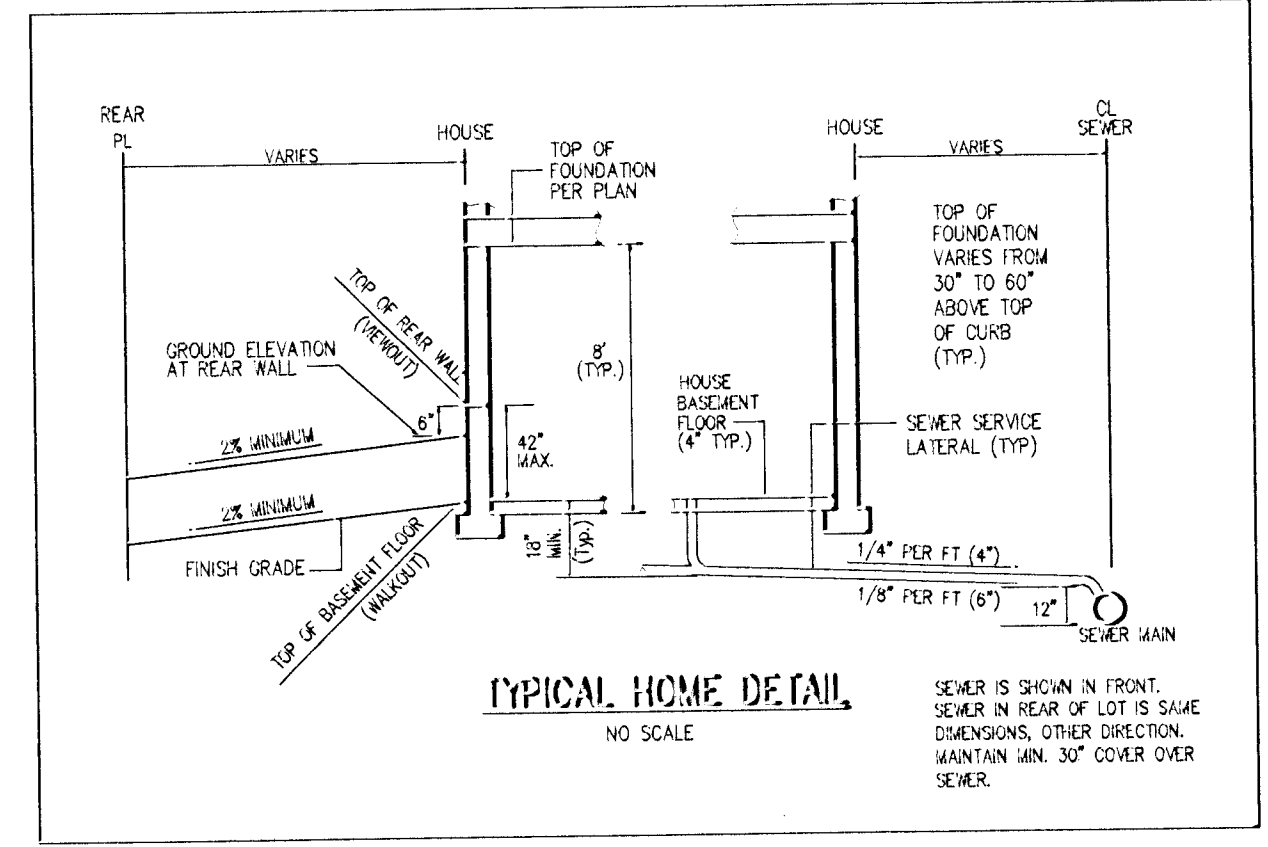
- INDICATES NO VIEW OUT BASEMENT
 (F-Indicates Top of Foundation Wall Elevation)
 (G-Indicates Garage Floor Elevation)
- INDICATES PROPOSED VIEW OUT BASEMENT
 (V-Indicates Ground Elevation @ Rear Wall)
 (F-Indicates Top of Foundation Wall Elevation)
 (G-Indicates Garage Floor Elevation)
- INDICATES PROPOSED WALK OUT BASEMENT
 (W-Indicates Basement Floor Elevation)
 (F-Indicates Top of Foundation Wall Elevation)
 (G-Indicates Garage Floor Elevation)

BENCHMARKS

1. "X" Cut on South Hub Guard of R.C.B.C. 26' South & 34' West of NW Cor. Sec. 35 Elev. 1311.90
2. Rail Road Spike in Power Pole. Approximately 25' South & 30' East of W. 1/4 Cor. Sec. 35 Elev. 1349.65
3. Disc on top of curb at the SE corner of Mustang and Triple Crown. Elev. 1331.86
4. Disc on top of curb at the SE corner of Equestrian Circle and Triple Crown. Elev. 1334.88
5. Disc on top of curb at the NE corner of Mustang and Mustang Ct. Elev. 1329.33
6. Disc on top of curb opposite Lot 33, Block 2 Elev. 1326.91
7. Disc on top of curb opposite Lot 42, Block 2 Elev. 1330.74
8. Disc on top of curb opposite Lot 51, Block 2 Elev. 1333.53
9. Disc on top of curb opposite Lot 23, Block 6 Elev. 1338.10
10. Disc on top of curb opposite Lot 19 Block 6 Elev. 1337.92

NOTES

1. Add 1300 to Finish Elevations to get M.S.L. Datum.
2. Front Lot Corner Elevations are shown in street. Front Lot Corner Elevations are 0.5 feet above Top of Curb Elevation. (Top of Curb Elevations are not shown).
3. Garage Floor Elevations are set 3' above highest Front Lot Corner Elevation (Typical).
4. This plan was prepared for drainage purposes only. The existing ground line may have been changed in some areas within this addition. Grade changes in these areas may not have been made with engineered fills. Builders may need to obtain foundation advice from a Geotechnical Engineer prior to construction.



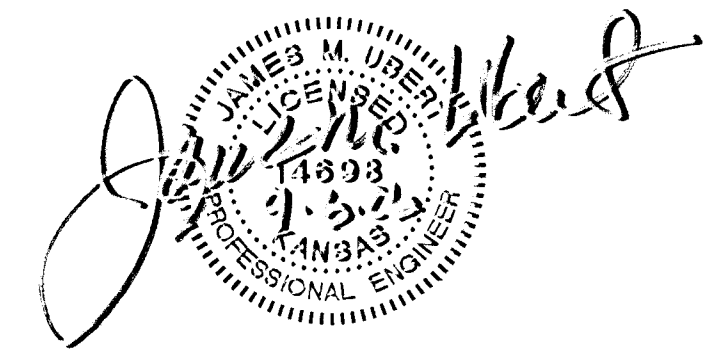
LOT GRADING PLAN

EQUESTRIAN ESTATES

Developer: John Greenstreet
J.D.G., LLC
12221 E. Central
Wichita, KS 67206

Engineer: Poe and Associates of Kansas, Inc.
5910 E. Central
Wichita, KS 67208

An Addition to Wichita - Sedgwick County, Kansas
(Associated Zone Case PUD 2000-0001)

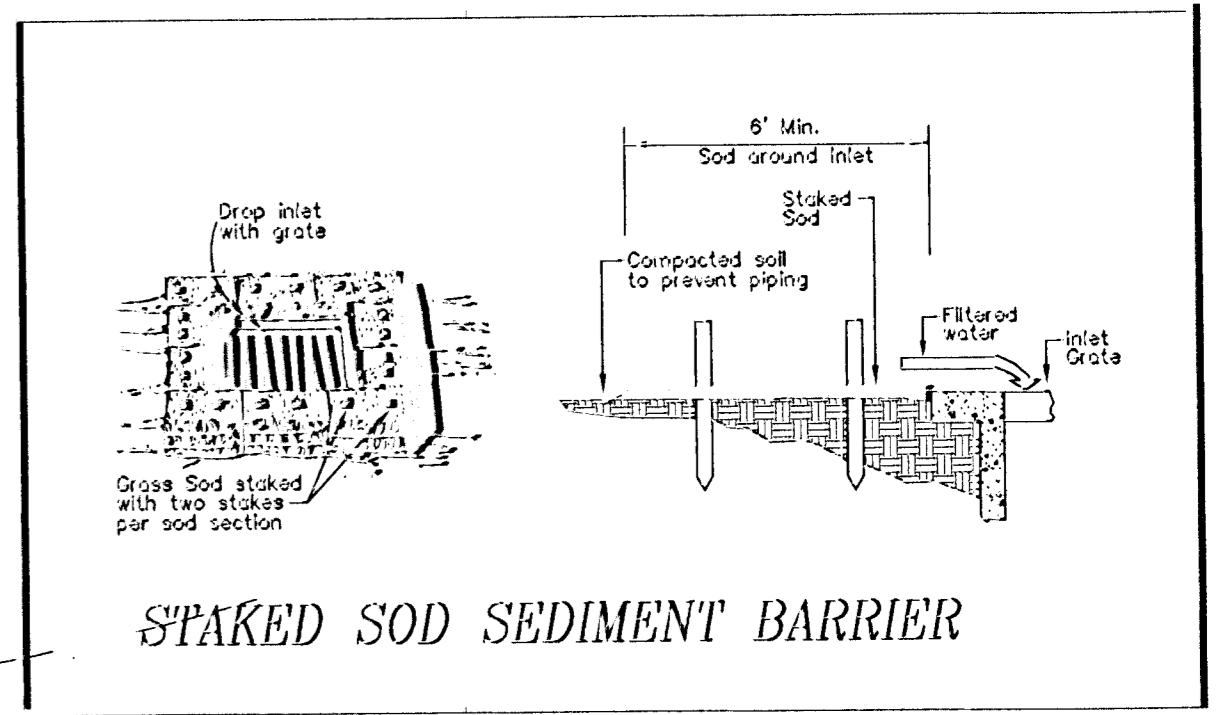


POE & ASSOCIATES OF KANSAS, INC.
CONSULTING ENGINEERS
5940 E. Central, Suite 200 Wichita, KS 67208 4242
Phone 316.695-1114 FAX 316.695-1414

DATE: JULY 13, 2001
Revised: JULY 31, 2002
Revised: APRIL 14, 2003
Revised: JAN. 5, 2004

Revised: MARCH 12, 2004
Revised: JAN. 17, 2006
Revised: SEPT. 6, 2006

Revised: October 20, 2007



NOTE: REMOVE SILT FENCE AROUND DROP INLETS IN THIS AREA AND REPLACE WITH STAKED SOD SEDIMENT BARRIER

SCALE 1"=40'

LEGEND

- INDICATES NO VIEWOUT BASEMENT
 (F-Indicates Top of Foundation Wall Elevation)
 (G-Indicates Garage Floor Elevation)
- INDICATES PROPOSED VIEW OUT BASEMENT
 (V-Indicates Ground Elevation @ Rear Wall)
 (Rear Wall is 0.5 ft. (6") above Ground Elevation)
 (F-Indicates Top of Foundation Wall Elevation)
 (G-Indicates Garage Floor Elevation)
- INDICATES PROPOSED WALK OUT BASEMENT
 (W-Indicates Basement Floor Elevation)
 (F-Indicates Top of Foundation Wall Elevation)
 (G-Indicates Garage Floor Elevation)

BENCHMARKS

1. "□" Cut on South Hub Guard of R.C.B.C. 26' South & 94' West of NW Cor. Sec. 35 Elev. 1311.90
2. Rail Road Spike in Power Pole. Approximately 25' South & 30' East of W. 1/4 Cor. Sec. 35 Elev. 1349.65

NOTES

1. Add 1300 to Finish Elevations to get M.S.L. Datum.
2. Front Lot Corner Elevations are shown in street. Front Lot Corner Elevations are 0.5 feet above Top of Curb Elevation. (Top of Curb Elevations are not shown).
3. Garage Floor Elevations are set 3' above highest Front Lot Corner Elevation (Typical).
4. This plan was prepared for drainage purposes only. The existing ground line may have been changed in some areas within this addition. Grade changes in these areas may not have been made with engineered fills. Builders may need to obtain foundation advice from a Geotechnical Engineer prior to construction.

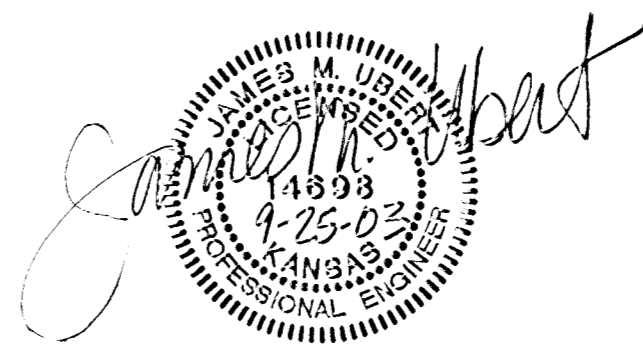


LOT GRADING PLAN
EQUESTRIAN ESTATES

Developer: John Greenstreet
J.D.G., LLC
12221 E. Central
Wichita, KS 67208

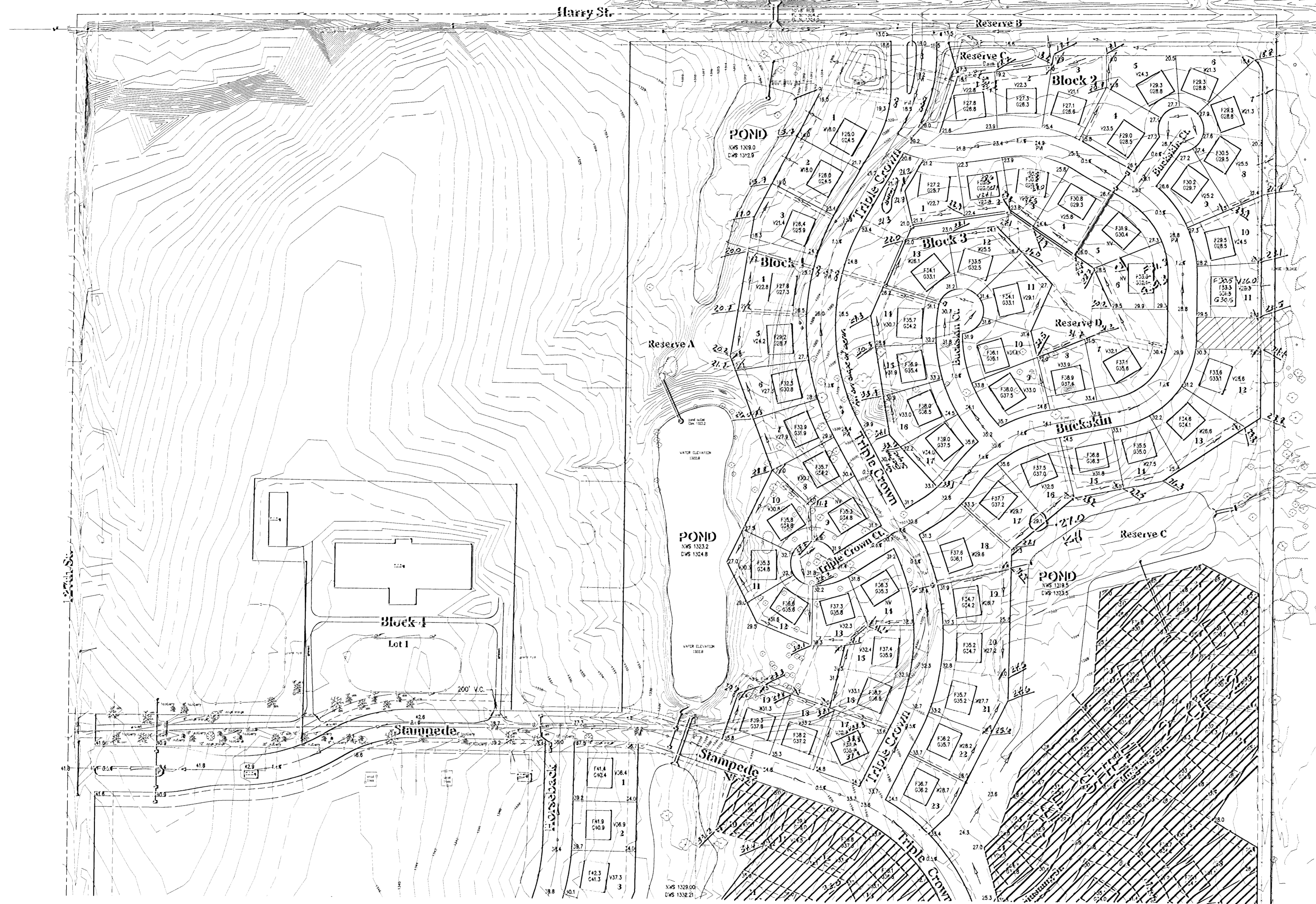
Engineer: Poe and Associates of Kansas, Inc.
5910 E. Central
Wichita, KS 67203

An Addition to Wichita - Sedgwick County, Kansas
(Associated Zone Case PUD 2000-0001)



POE & ASSOCIATES OF KANSAS, INC.
CONSULTING ENGINEERS
5910 E. Central, Suite 200 | Wichita, KS 67208-4242
Phone 316/685-4114 | FAX 316/685-4444

DATE: JULY 13, 2001
Revised: JULY 31, 2002
Revised: SEPT. 19, 2003



As Built Elevations:
 Hand written elevations are "As Built" elevations as surveyed for the sanitary sewer construction. Builders should check "As Built" elevations listed and always provide for a minimum of 2% slope away from the rear of a home to the lowest rear lot corner. Additionally, 1% slope should be provided along the rear easement from lot line to lot line. Any fills or cuts in the rear easements by builders shall be done in a way that will not interfere with the overall drainage scheme.

SCALE 1"=100'

LEGEND

- NV
F134
G369 - INDICATES NO VIEWOUT BASEMENT
 (F-Indicates Top of Foundation Wall Elevation)
 (G-Indicates Garage Floor Elevation)
- V6.7
F317
G302 - INDICATES PROPOSED VIEW OUT BASEMENT
 (V-Indicates Ground Elevation @ Rear Wall)
 (F-Indicates Top of Foundation Wall Elevation)
 (G-Indicates Garage Floor Elevation)
- W7.2
F352
G247 - INDICATES PROPOSED WALK OUT BASEMENT
 (W-Indicates Basement Floor Elevation)
 (F-Indicates Top of Foundation Wall Elevation)
 (G-Indicates Garage Floor Elevation)

BENCHMARKS

1. "□" Cut on South Hub Guard of R.C.B.C.
 26' South & 94' West of NW Cor. Sec. 35
 Elev. 1311.90
2. Rail Road Spike in Power Pole. Approximately
 25' South & 30' East of W 1/4 Cor. Sec. 35
 Elev. 1349.65

NOTES

1. Add 1300 to Finish Elevations to get M.S.L. Datum.
2. Front Lot Corner Elevations are shown in street.
 Front Lot Corner Elevations are 0.5 feet above Top of Curb Elevation.
 (Top of Curb Elevations are not shown).
3. Garage Floor Elevations are set 3' above highest Front Lot Corner Elevation (Typical).
4. This plan was prepared for drainage purposes only.
 The existing ground line may have been changed in some areas within this addition. Grade changes in these areas may not have been made with engineered fills. Builders may need to obtain foundation advice from a Geotechnical Engineer prior to construction.

LOT GRADING PLAN
EQUESTRIAN ESTATES

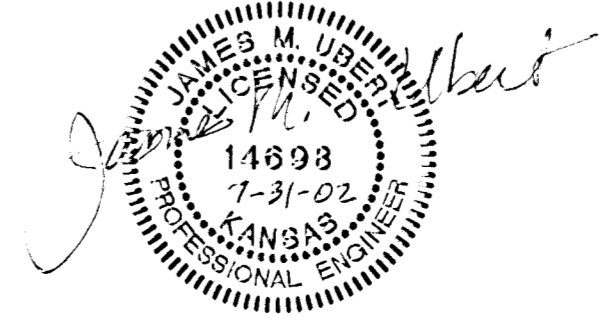
Developer: John Greenstreet
 J.D.G., LLC
 12221 E. Central
 Wichita, KS 67206

Engineer: Poe and Associates of Kansas, Inc.
 3940 E. Central
 Wichita, KS 67203

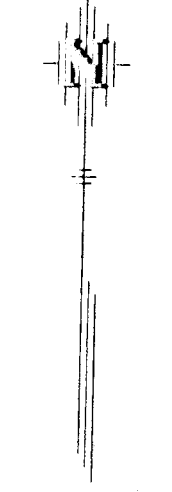
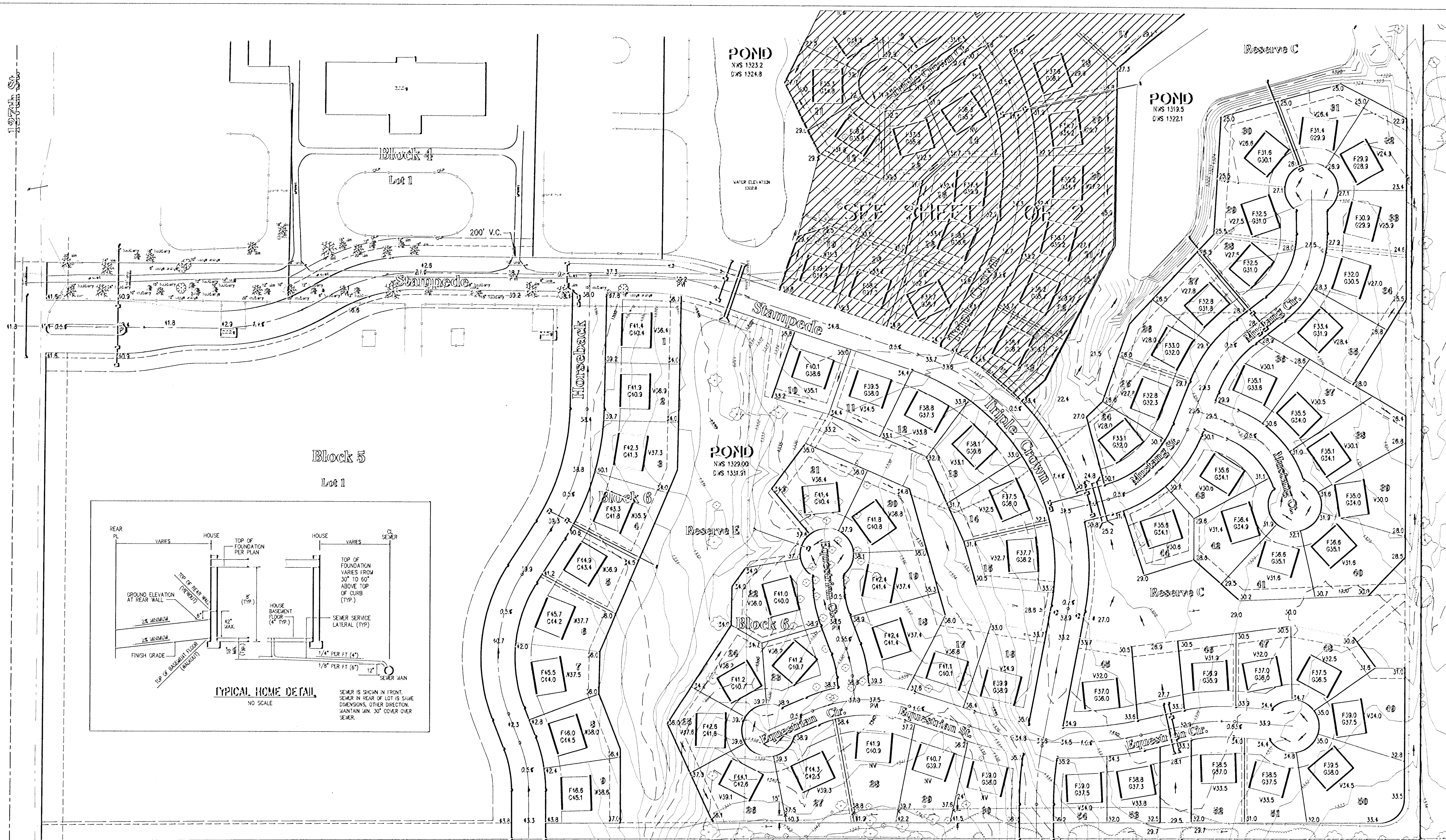
An Addition to Wichita - Sedgwick County, Kansas
 (Associated Zone Case PUD 2000-0001)

DATE: JULY 13, 2001
 Revised: JULY 31, 2002
 Revised: April, 14, 2003
 Revised: January, 5, 2004

Revised: November 1, 2001
 Revised: September 24, 2003
 Revised: October 30, 2001



POE & ASSOCIATES OF KANSAS, INC.
 CONSULTING ENGINEERS
 5940 E. Central Suite 200 Wichita, KS 67208-4242
 Phone 316.855.4114 FAX 316.885.4444



SCALE 1" = 100'

LEGEND

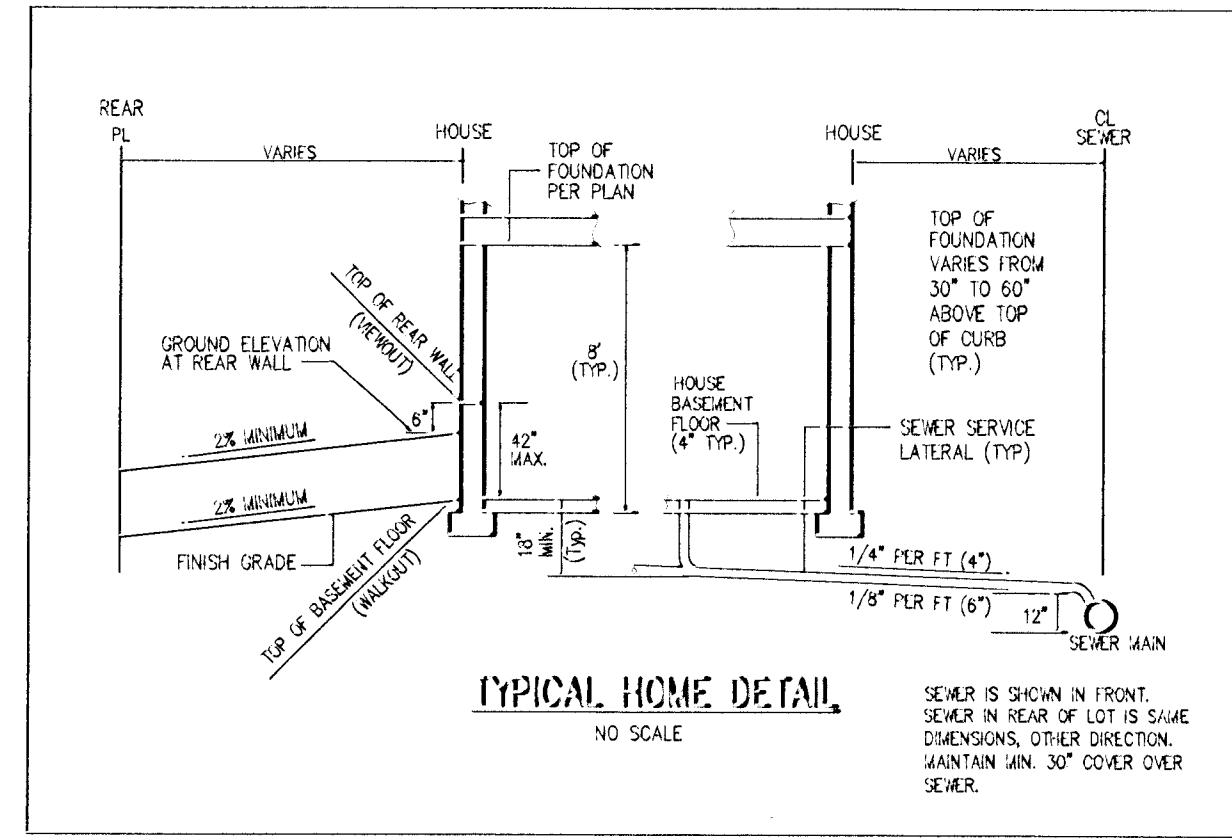
- INDICATES NO VIEW OUT BASEMENT (F-Indicates Top of Foundation Wall Elevation) (G-Indicates Garage Floor Elevation)
- INDICATES PROPOSED VIEW OUT BASEMENT (V-Indicates Ground Elevation @ Rear Wall) (F-Indicates Top of Foundation Wall Elevation) (G-Indicates Garage Floor Elevation)
- INDICATES PROPOSED WALK OUT BASEMENT (W-Indicates Basement Floor Elevation) (F-Indicates Top of Foundation Wall Elevation) (G-Indicates Garage Floor Elevation)

BENCHMARKS

1. " " Cut on South Hub Guard of R.C.B.C. 26' South & 34' West of NW Cor. Sec. 35 Elev. 1311.90
2. Rail Road Spike in Power Pole, Approximately 25' South & 30' East of W. 1/4 Cor. Sec. 35 Elev. 1349.65
3. Disc on top of curb at the SE corner of Mustang and Triple Crown. Elev. 1331.86
4. Disc on top of curb at the SE corner of Equestrian Circle and Triple Crown. Elev. 1334.88
5. Disc on top of curb at the NE corner of Mustang and Mustang Ct. Elev. 1329.33
6. Disc on top of curb opposite Lot 33, Block 2 Elev. 1326.91
7. Disc on top of curb opposite Lot 42, Block 2 Elev. 1330.74
8. Disc on top of curb opposite Lot 51, Block 2 Elev. 1333.53
9. Disc on top of curb opposite Lot 23, Block 6 Elev. 1338.10
10. Disc on top of curb opposite Lot 19 Block 6 Elev. 1337.92

NOTES

1. Add 1300 to Finish Elevations to get M.S.L. Datum.
2. Front Lot Corner Elevations are shown in street. Front Lot Corner Elevations are 0.5 feet above Top of Curb Elevation. (Top of Curb Elevations are not shown).
3. Garage Floor Elevations are set 3' above highest Front Lot Corner Elevation (Typical).
4. This plan was prepared for drainage purposes only. The existing ground line may have been changed in some areas within this addition. Grade changes in these areas may not have been made with engineered fills. Builders may need to obtain foundation advice from a Geotechnical Engineer prior to construction.



LOT GRADING PLAN

EQUESTRIAN ESTATES

Developer: John Greenstreet
J.D.G., LLC
12221 E. Central
Wichita, KS 67206

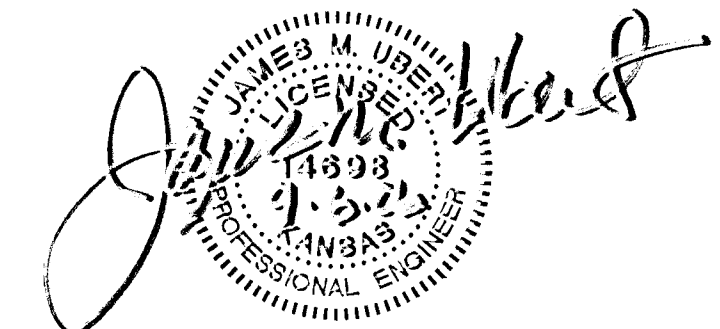
Engineer: Poe and Associates of Kansas, Inc.
5940 E. Central
Wichita, KS 67203

An Addition to Wichita - Sedgwick County, Kansas
(Associated Zone Case PUD 2000-0001)

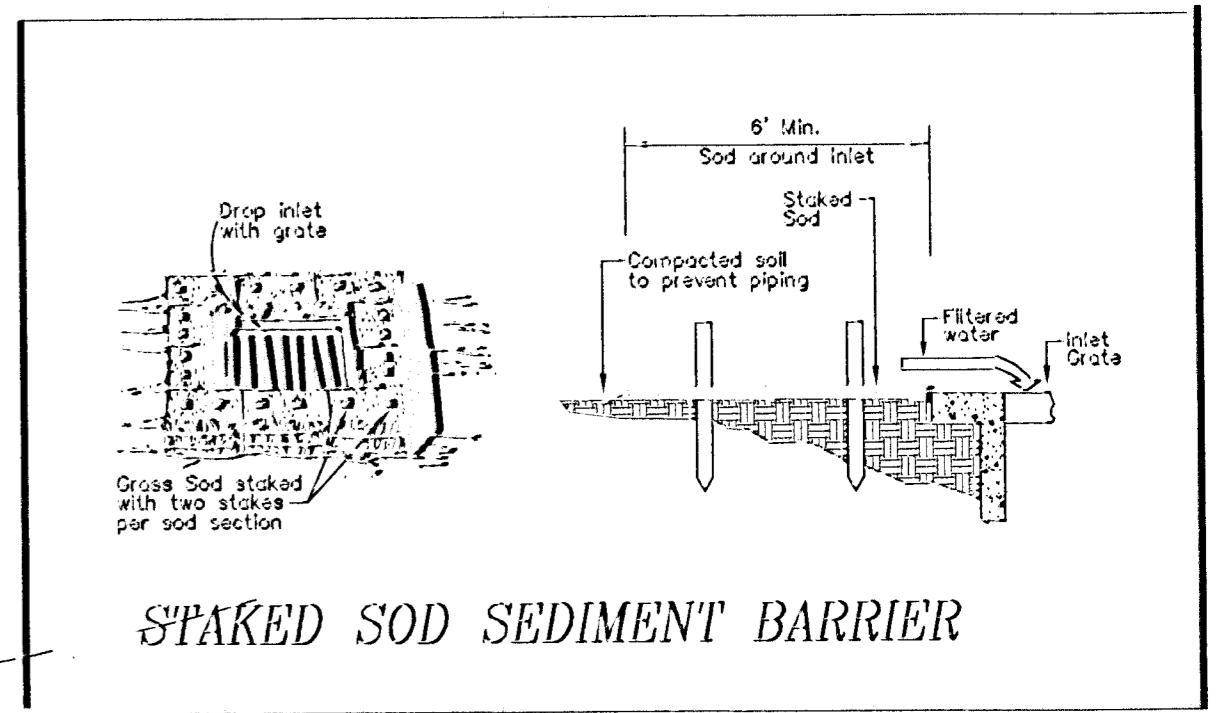
DATE: JULY 13, 2001
Revised: JULY 31, 2002
Revised: APRIL 14, 2003
Revised: JAN. 5, 2004

Revised: MARCH 12, 2004
Revised: JAN. 17, 2006
Revised: SEPT. 6, 2006

Revised: October 30, 2007



POE & ASSOCIATES OF KANSAS, INC.
CONSULTING ENGINEERS
5940 E. Central, Suite 200 | Wichita, KS 67208 4242
Phone 316.685-4114 | FAX 316.685-4444



NOTE: REMOVE SILT FENCE AROUND DROP INLETS IN THIS AREA AND REPLACE WITH STAKED SOD SEDIMENT BARRIER

SCALE 1"=40'

LEGEND

- INDICATES NO VIEWOUT BASEMENT
 (F-Indicates Top of Foundation Wall Elevation)
 (G-Indicates Garage Floor Elevation)
- INDICATES PROPOSED VIEW OUT BASEMENT
 (V-Indicates Ground Elevation @ Rear Wall)
 (Rear Wall is 0.5 ft. (6") above Ground Elevation)
 (F-Indicates Top of Foundation Wall Elevation)
 (G-Indicates Garage Floor Elevation)
- INDICATES PROPOSED WALK OUT BASEMENT
 (W-Indicates Basement Floor Elevation)
 (F-Indicates Top of Foundation Wall Elevation)
 (G-Indicates Garage Floor Elevation)

BENCHMARKS

1. "D" Out on South Hub Guard of R.C.B.C. 26' South & 94' West of NW Cor. Sec. 35 Elev. 1311.90
2. Rail Road Spike in Power Pole. Approximately 25' South & 30' East of W. 1/4 Cor. Sec. 35 Elev. 1349.65

NOTES

1. Add 1300 to Finish Elevations to get M.S.L. Datum.
2. Front Lot Corner Elevations are shown in street. Front Lot Corner Elevations are 0.5 feet above Top of Curb Elevation. (Top of Curb Elevations are not shown).
3. Garage Floor Elevations are set 3' above highest Front Lot Corner Elevation (Typical).
4. This plan was prepared for drainage purposes only. The existing ground line may have been changed in some areas within this addition. Grade changes in these areas may not have been made with engineered fills. Builders may need to obtain foundation advice from a Geotechnical Engineer prior to construction.

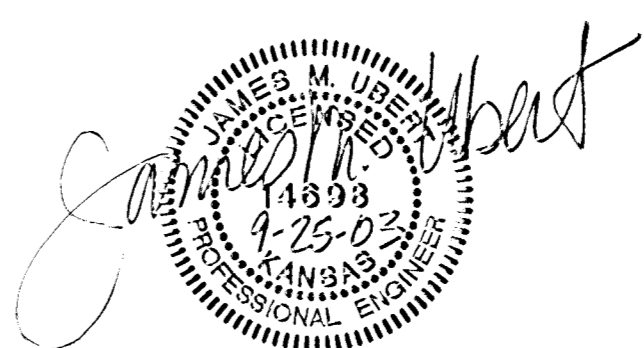


LOT GRADING PLAN
EQUESTRIAN ESTATES

Developer: John Greenstreet
 J.D.G., LLC
 12221 E. Central
 Wichita, KS 67208

Engineer: Poe and Associates of Kansas, Inc.
 5940 E. Central
 Wichita, KS 67208

An Addition to Wichita - Sedgwick County, Kansas
 (Associated Zone Case PUD 2000-0001)



POE & ASSOCIATES OF KANSAS, INC.
 CONSULTING ENGINEERS
 5940 E. Central, Suite 200 | Wichita, KS 67208-4242
 Phone 316/685-4114 | FAX 316/685-4444

DATE: JULY 13, 2001
 Revised: JULY 31, 2002
 Revised: SEPT. 19, 2003