

# NEWMARKET V ADDITION

## AN ADDITION TO WICHITA, SEDGWICK COUNTY, KANSAS

### DRAINAGE PLAN

NOTE:

Minimum Pad = 167.4 City Datum or 1354.8 NGVD  
Total inflow, Q, into the detention pond is based upon a fully developed basin.

The 7' x 2.5' RCB can only handle a portion of the total flow down the Maize Rd. ditch. Currently the rest of the flow is diverted to the west where it overtops 29th Street North.

New Market V drainage plan meets the requirements of the Cadillac Lake Drainage Study dated August 2006.

Property is located within a FEMA Flood Zone A.

BFE = ELEVATION: 164.5 CITY DATUM  
1351.9 N.G.V.D.

\*Once a final wetland determination has been done on the property to the west, then the ditch slopes can be adjusted accordingly.

\*\* Total Drainage Area = 670 Acres which drains to 10'x3' & 7'x2.5' RCB's. Flow Greater Than 65 CFS Will Drain West From The 7'x2.5' Box Into The 10'x3' Box.

All Elevations in NGVD.

Elevations of Ditch Along West Side of Property shall be such to meet the requirements of the U.S. Corps of Engineers Permit.

Box Culvert Along Maize Rd. will be installed to meet the requirements of City of Wichita, Traffic Engineering Department.

The drainage plan is subject to change based on the Army Corp permit Requirements.

SCALE: 1" = 100'

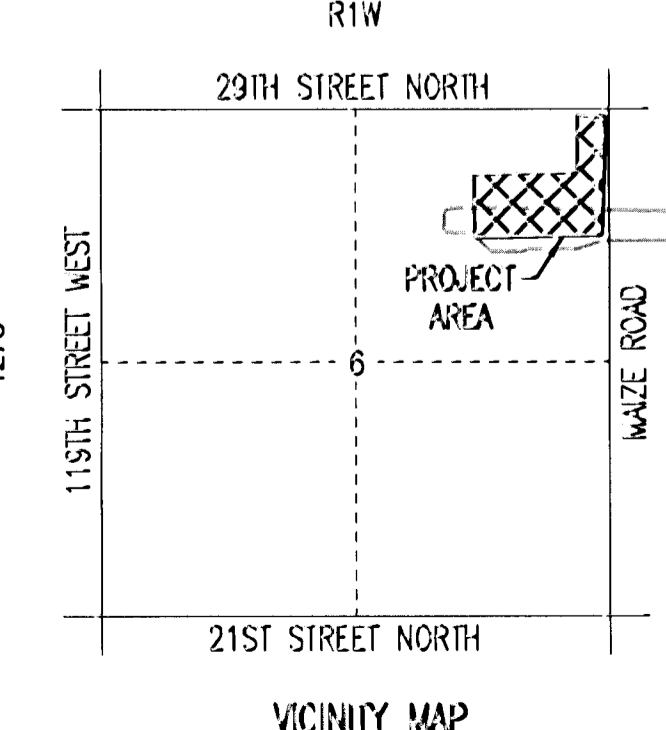
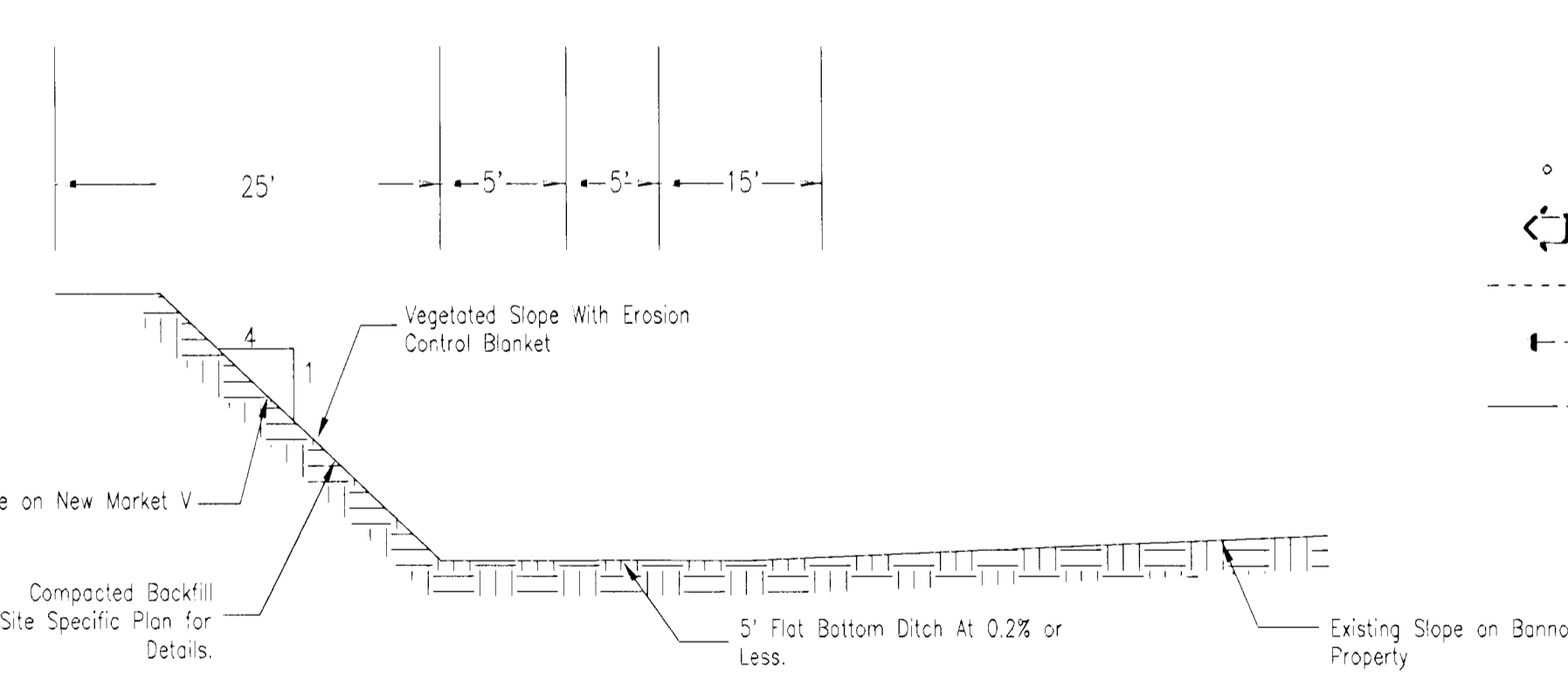
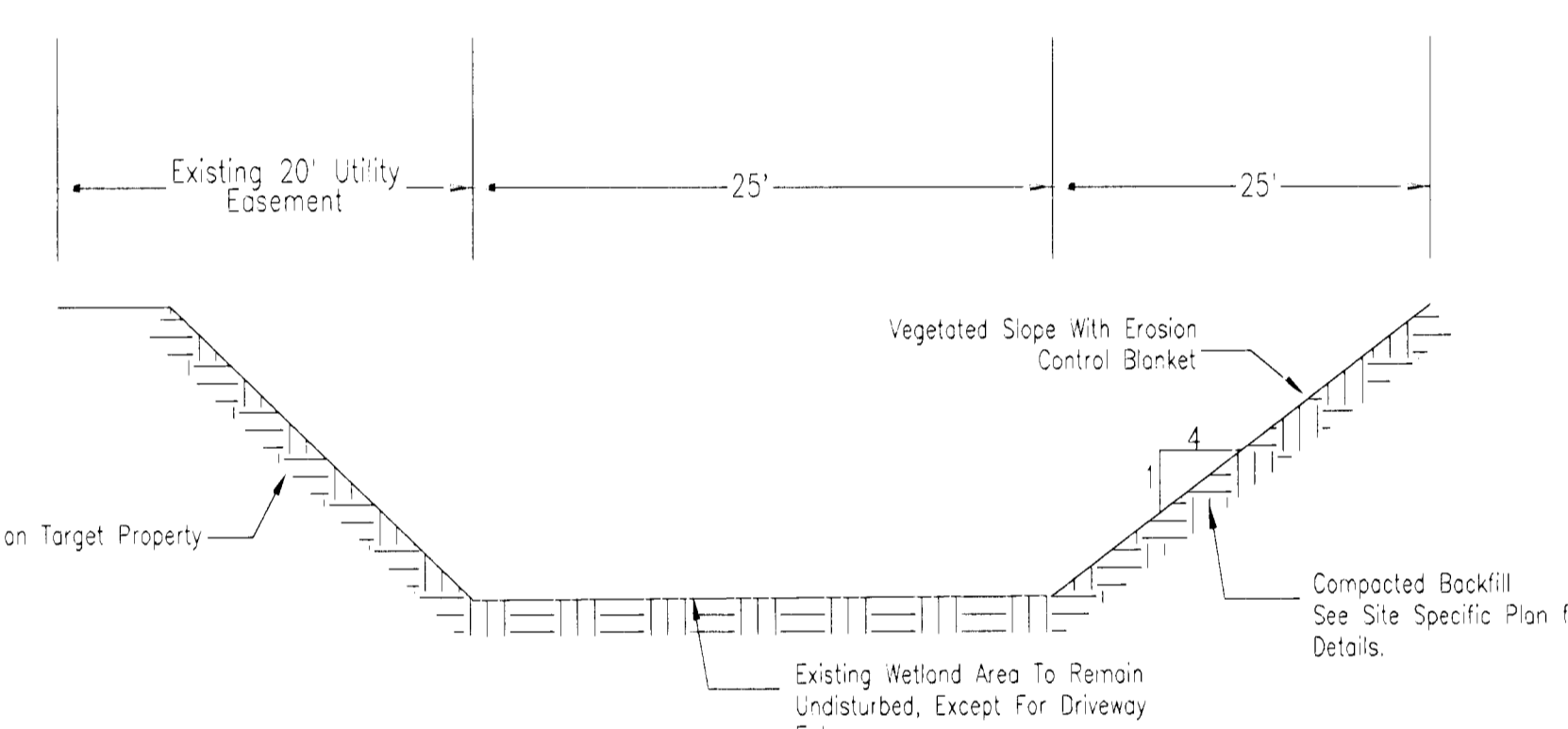
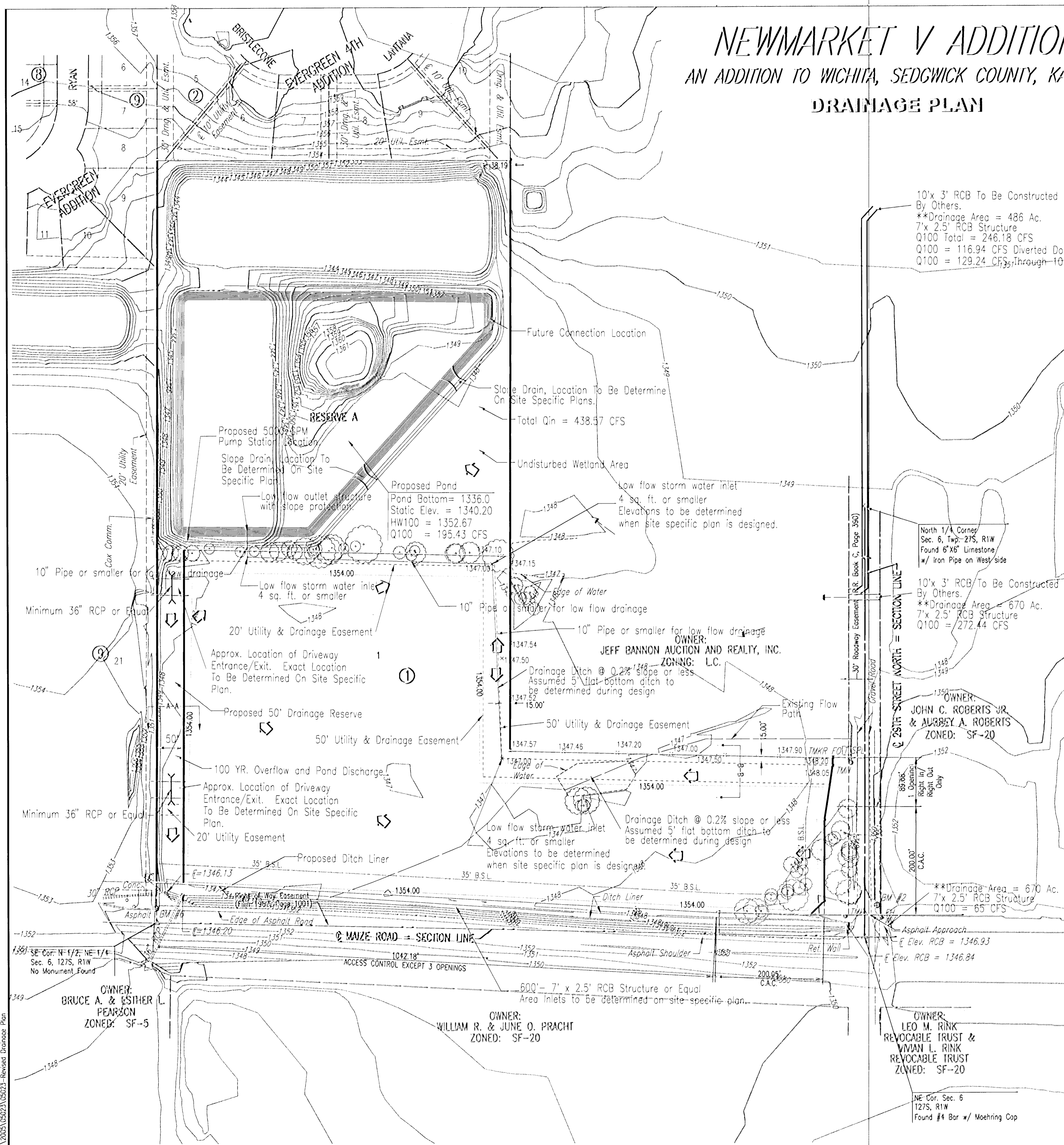
BENCHMARKS BM

BM #2  
CITY OF WICHITA BM DISC 63.4' NNW OF NE COR., SEC. 6, 127S, R1W

ELEVATION: 161.92 CITY DATUM  
1349.32 N.G.V.D.

BM #6  
CHISELED "J" ON TOP BACK CURB, W. CURB LINE OF MAIZE RD. AT BEGINNING OF CURB ± 1/4 MILE S. OF 29TH ST. N.

ELEVATION: 164.52 CITY DATUM  
1351.92 N.G.V.D.



LEGEND

- Sign
- Flow Arrow - Very Low Flows
- Flowline Of Ditch
- Flow Arrow - Normal Flows
- Existing Flow Path

REVISED: 12-11-07

REVISED: 1-07-08

REVISED: 2-08-08

Saved 07-08-2008 10:45:17 AM by SRB  
 Plt. Scale 1:100 02-08-2006 10:45:55 AM by SIB  
 C:\2005\10225\10225-REVISED Drainage Plan