

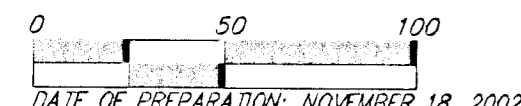
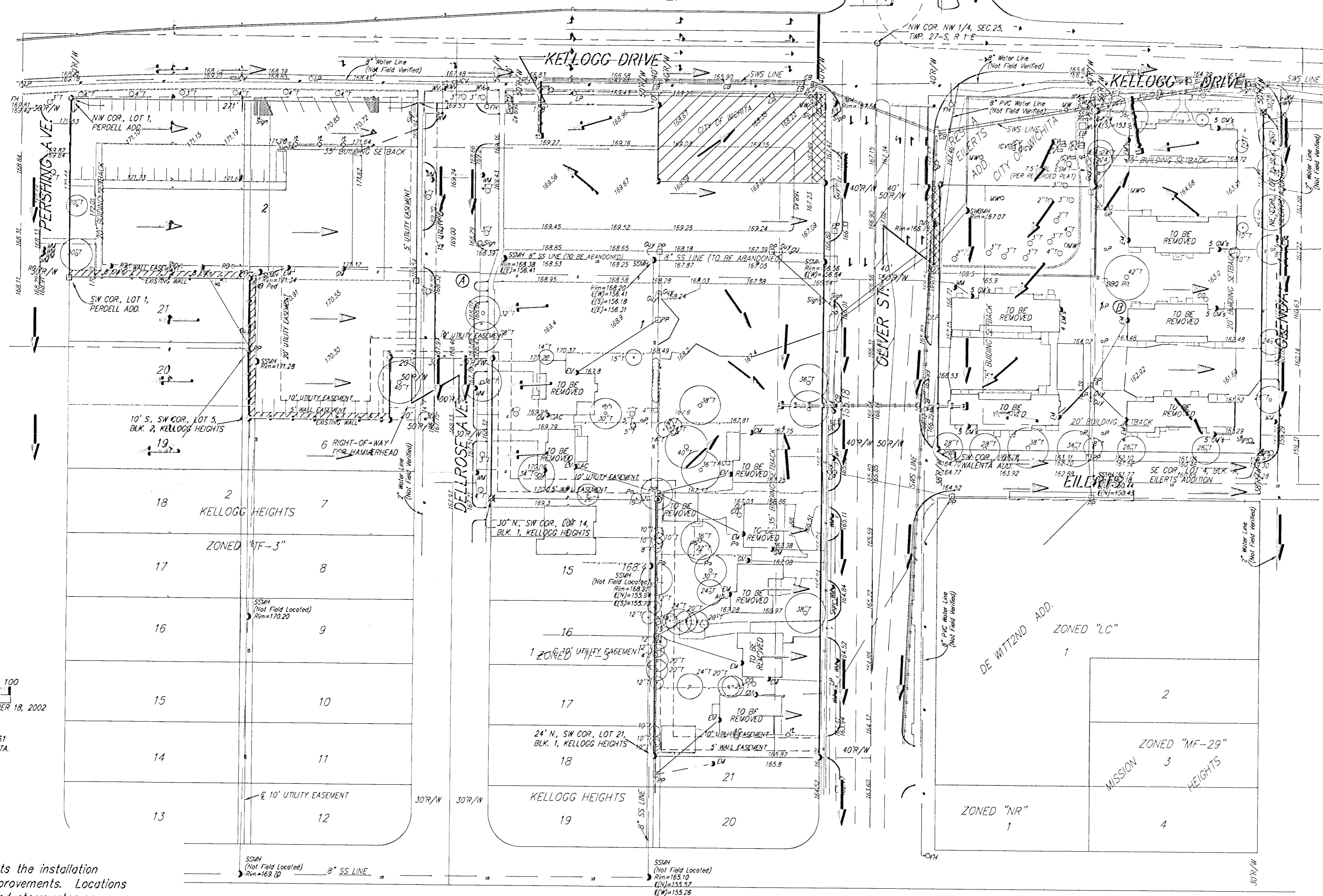
# DRAINAGE PLAN

## ANN WALENTA ADDITION

### WICHITA, SEDGWICK COUNTY, KANSAS

KELLOGG AVE.

COMPLETE ACCESS CONTROL (US-54)



DATE OF PREPARATION: NOVEMBER 18, 2002  
 NOTE:  
 ADDITIONAL BUILDING SETBACKS  
 REQUIREMENTS PER C.U.P. DP-261  
 ON FILE WITH THE CITY OF WICHITA.

**Note:**  
 This Drainage Plan depicts the installation  
 of Stormwater Sewer Improvements. Locations  
 and sizes of the proposed stormwater sewers  
 will be determined upon specific site design.  
 Alterations may be made as necessary to achieve  
 the desired site design.

JANUARY 02, 2003

**BAUGHMAN COMPANY P. A.**  
 ENGINEERING, SURVEYING, & PLANNING  
 316-262-7271 • 315 ELLIS • WICHITA, KANSAS 67211  
P:\14\ANNWALENTA\DWG\ANNWALENTAADD.DWG-RWK