

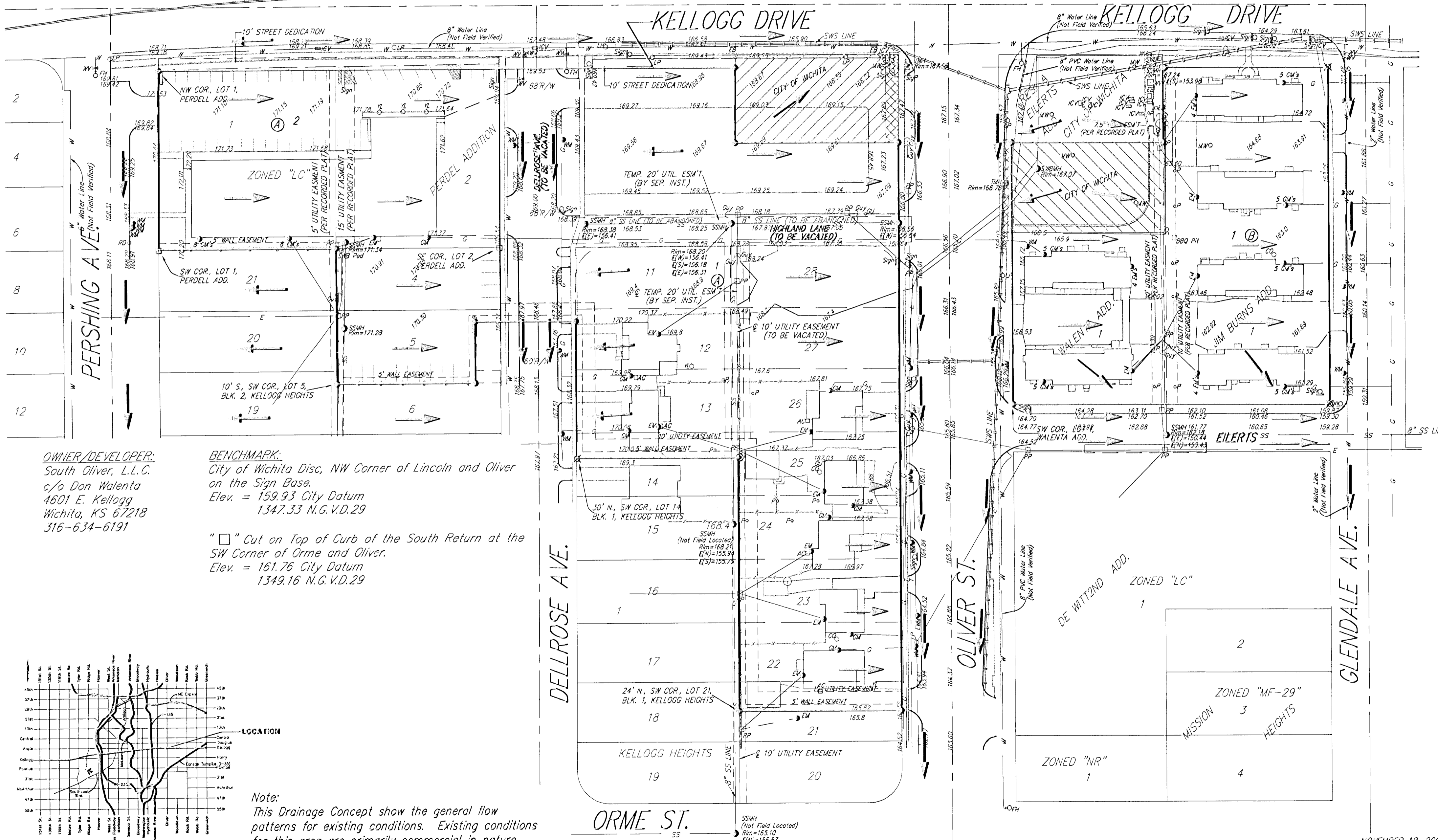
DRAINAGE CONCEPT ANN WALENTA ADDITION WICHITA, SEDGWICK COUNTY, KANSAS

KELLOGG AVE.

Note:
Location of Kellogg improvements per HNTB Kellogg
Plan(1996) sheet 18.

(US-54)

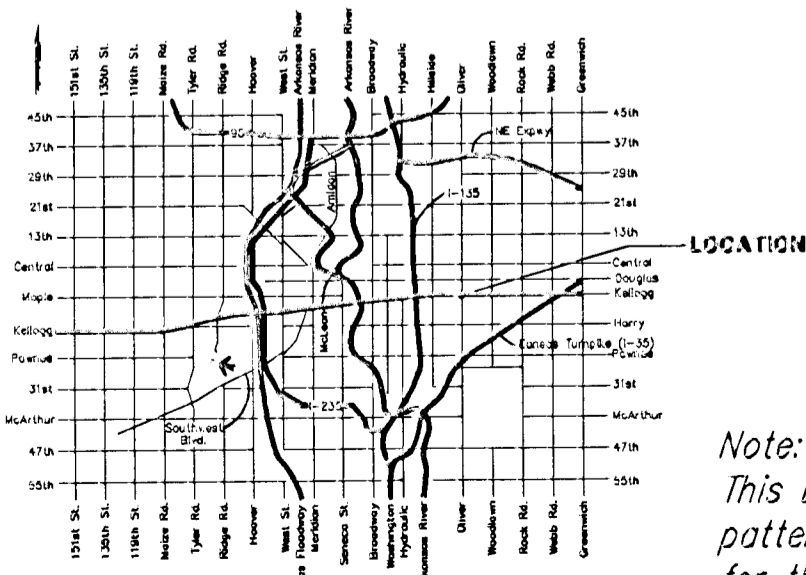
0 50 100
DATE OF PREPARATION: NOVEMBER 18, 2002
DATE OF TOPOGRAPHY: OCTOBER 29, 2002
COUNTOUT INTERVAL: 1 FOOT



OWNER/DEVELOPER:
South Oliver, L.L.C.
c/o Don Walenta
4601 E. Kellogg
Wichita, KS 67218
316-634-6191

BENCHMARK:
City of Wichita Disc, NW Corner of Lincoln and Oliver
on the Sign Base.
Elev. = 159.93 City Datum
1347.33 N.G.V.D.29

"□" Cut on Top of Curb of the South Return at the
SW Corner of Orme and Oliver.
Elev. = 161.76 City Datum
1349.16 N.G.V.D.29



VICINITY MAP

Note:
This Drainage Concept show the general flow
patterns for existing conditions. Existing conditions
for this area are primarily commercial in nature.
Any increase in rainfall runoff will be minimal, due
to the amount of existing impervious surfaces.

NOVEMBER 18, 2002

BAUGHMAN COMPANY P. A.
ENGINEERING, SURVEYING, & PLANNING
316-282-7271 • 315 ELLIS • WICHITA, KANSAS 67211
F:\PROJECTS\OCCUPANT RETAIL CENTER\dwg\retailcenter.dwg-ELLS