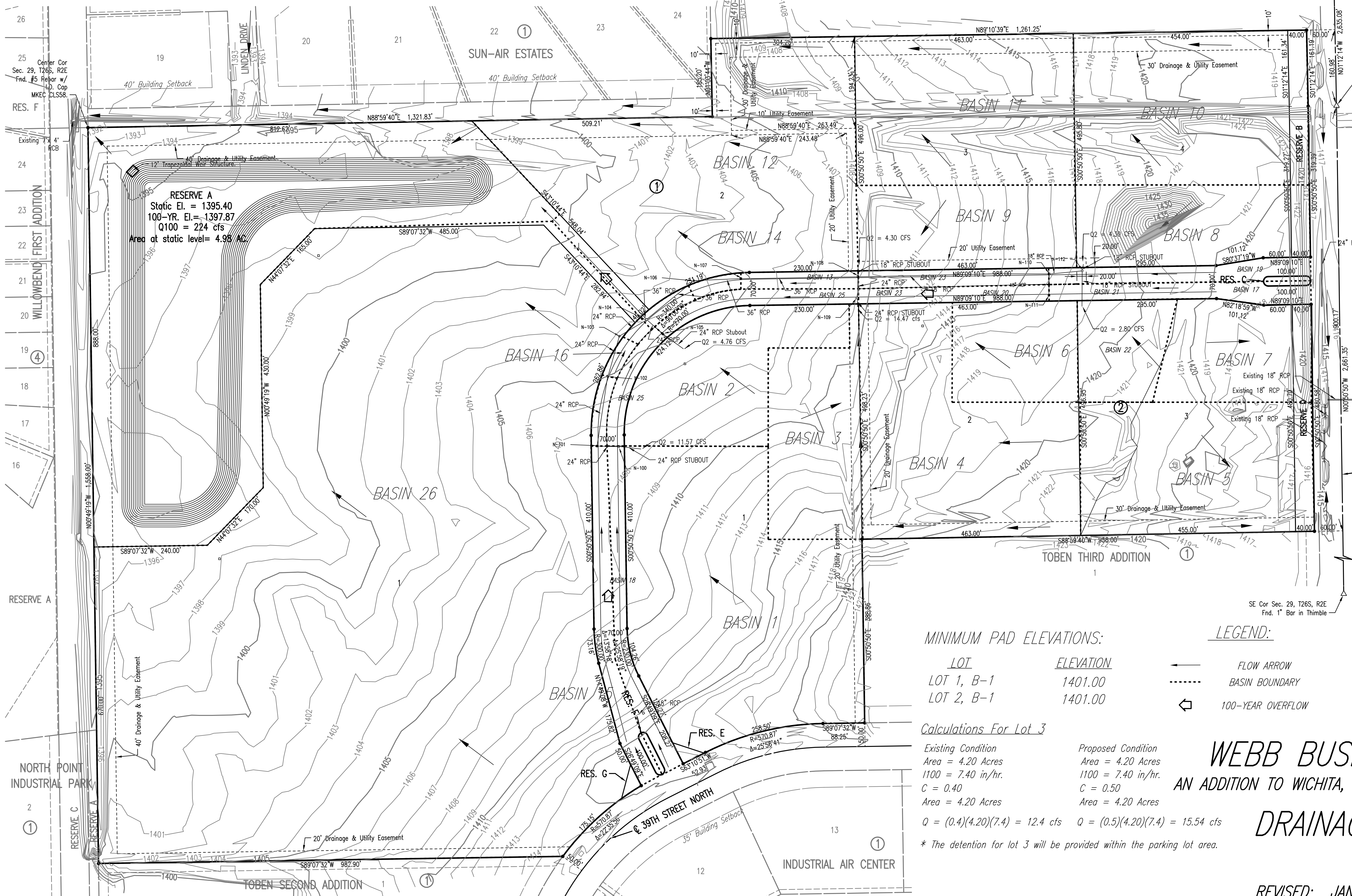


# WEBB BUSINESS PARK

AN ADDITION TO WICHITA, SEDGWICK COUNTY, KANSAS



- NE Cor Sec. 29, T26S, R2E  
Fnd. 5/8" Bar with  
GSS Cap Set in Concrete.
- E 1/4 Cor Sec. 29, T26S, R2E  
Fnd. 5/8" Bar with  
GSS Cap Set in Concrete.
- SCALE: 1" = 100'
- = 1/2" REBAR W/PEC CAP UNLESS OTHERWISE NOTED
- BENCHMARKS** BM#999
- BM#1**  
DATUM BENCH MARK FROM TOBEN FIFTH ADDITION BY MKEC ENGINEERING CONSULTANTS. A CHISELED SQUARE ON THE WEST SIDE OF THE CENTER OF THREE CURB INLETS ON THE SOUTHEAST SIDE OF 39TH STREET NEAR THE SOUTHEAST CORNER OF THE PROPOSED PLAT FOR WEBB BUSINESS PARK ADDITION.  
ELEV. = 1412.36
- BM#2**  
CHISELED SQUARE ON NORTHEAST CORNER CURB INLET ON THE SOUTHWEST SIDE OF 39TH STREET NEAR ADDRESS 3830.  
ELEV. = 1415.05
- BM#3**  
CHISELED SQUARE ON THE NORTH TOP OF CURB ON 39TH STREET NEAR THE SOUTHWEST CORNER OF PROPOSED WEBB BUSINESS PARK ADDITION.  
ELEV. = 1420.38
- BM#4**  
CHISELED SQUARE ON THE NORTHEAST CORNER OF CURB INLET ON THE SOUTH SIDE OF 39TH STREET WEST OF WEBB ROAD.  
ELEV. = 1415.29
- BM#5**  
CHISELED SQUARE ON THE WEST TOP OF CURB OF WEBB ROAD EAST OF A FIRE HYDRANT LOCATED AT 884' SOUTH OF THE EAST QUARTER CORNER OF SECTION 29.  
ELEV. = 1415.32
- BM#6**  
CHISELED SQUARE ON WEST TOP CURB ON WEBB ROAD SOUTHWEST OF A PIPELINE MARKER AND 474' SOUTH OF THE EAST QUARTER CORNER OF SECTION 29.  
ELEV. = 1415.89
- BM#7**  
CHISELED SQUARE ON THE EAST SIDE OF A CURB INLET ON THE WEST SIDE OF WEBB ROAD LOCATED 28' WEST AND 57' SOUTH OF THE EAST QUARTER CORNER OF SECTION 29.  
ELEV. = 1417.72

**MINIMUM PAD ELEVATIONS:**

LOT	ELEVATION
LOT 1, B-1	1401.00
LOT 2, B-1	1401.00

- LEGEND:**
- FLOW ARROW
  - BASIN BOUNDARY
  - ◻ 100-YEAR OVERFLOW

**Calculations For Lot 3**

Existing Condition	Proposed Condition
Area = 4.20 Acres	Area = 4.20 Acres
1100 = 7.40 in/hr.	1100 = 7.40 in/hr.
C = 0.40	C = 0.50
Area = 4.20 Acres	Area = 4.20 Acres
$Q = (0.4)(4.20)(7.4) = 12.4 \text{ cfs}$	$Q = (0.5)(4.20)(7.4) = 15.54 \text{ cfs}$

\* The detention for lot 3 will be provided within the parking lot area.

## WEBB BUSINESS PARK

AN ADDITION TO WICHITA, SEDGWICK COUNTY, KANSAS

# DRAINAGE PLAN

REVISED: JANUARY 16, 2008

Saved 01-16-2008 11:15:22 AM by SRB  
 Plot Scale 1:100 01-16-2008 11:16:22 AM  
 C:\2007\02307\Drainage\02307.dwg