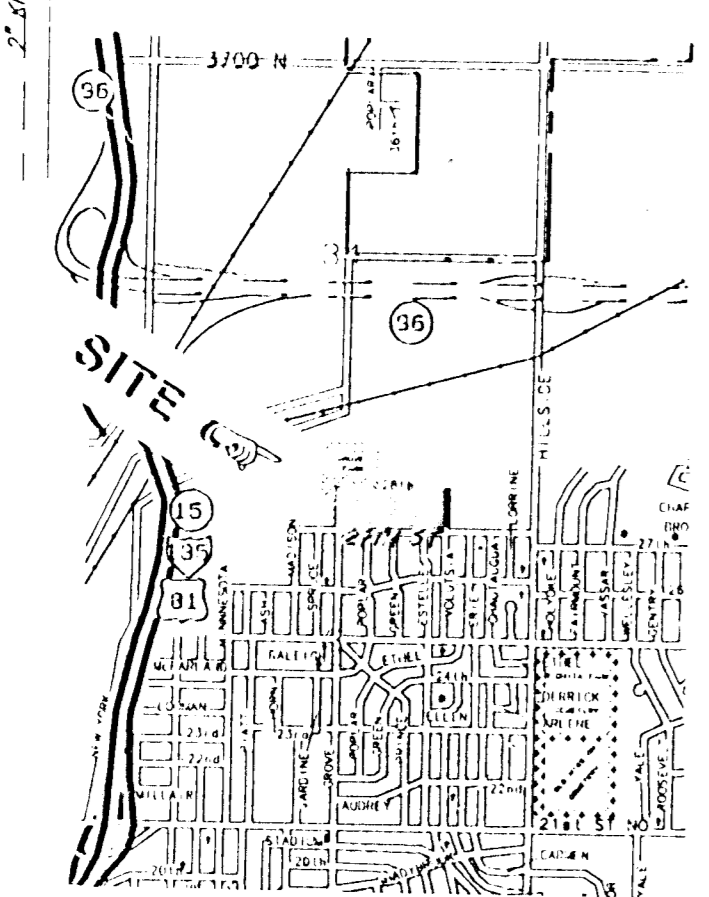
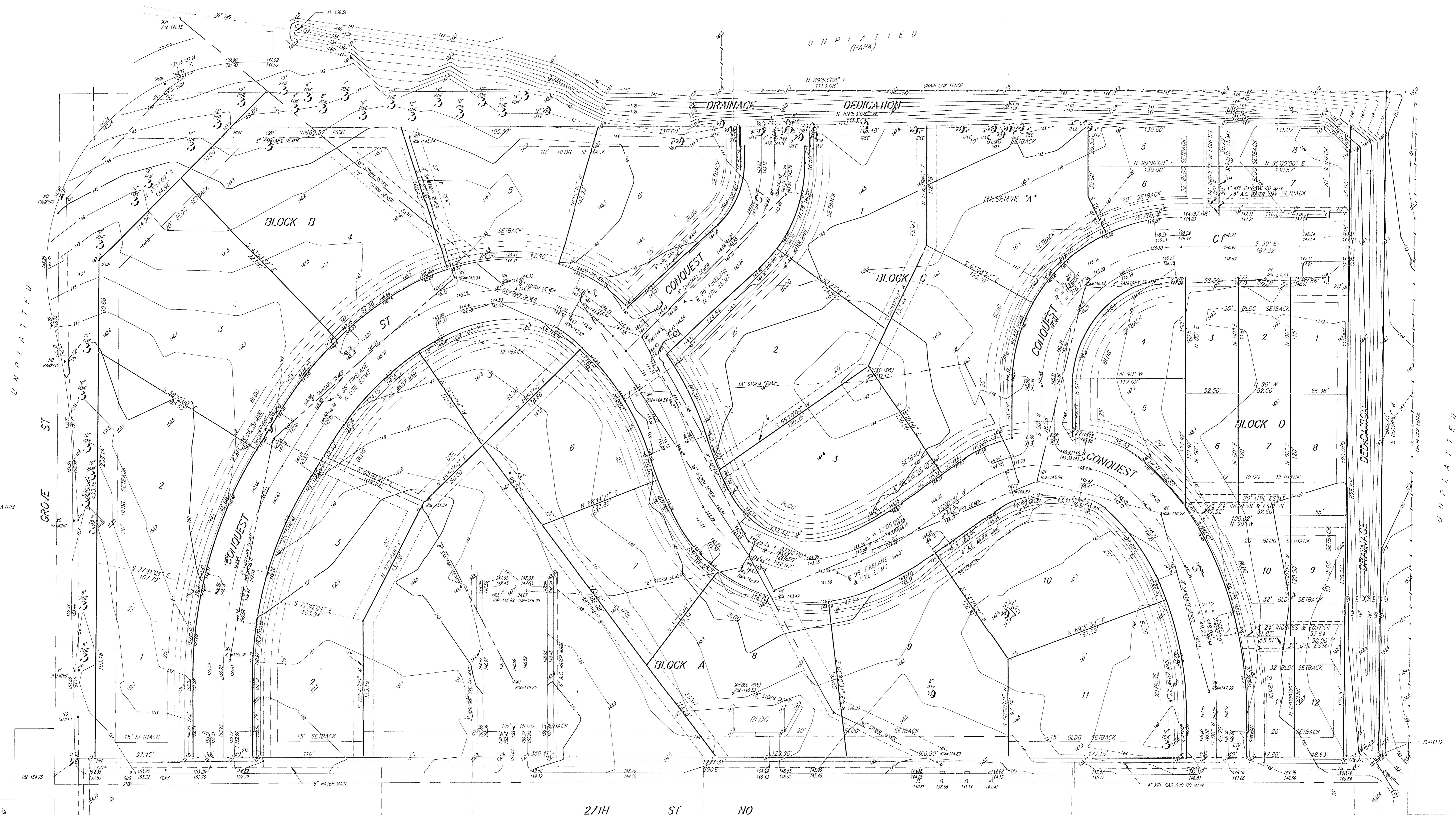


1" = 40'
ELEV. = CITY DATUM



VICINITY PLAT

PRELIMINARY PLAT CONQUEST NORTH ADDITION

WICHITA, SEDGWICK COUNTY, KANSAS

LOT 1, BLOCK A, CHISHOLM TERRACE ADDITION
WICHITA, SEDGWICK COUNTY, KANSAS

PRESENT OWNER:
CITY OF WICHITA

PROPOSED OWNER:
TIME QUEST NORTH DEVELOPMENT
AND INVESTMENT CORPORATION
BY BOYD SANDERS
1341 N. GROVE
WICHITA, KS 67214
PH: (316) 264-4091

CONSULTANT:
DUBOIS CONSULTANTS, INC
ATTN: AJAMU WEBSTER OR EDWARD JEANS
1103 E 47TH ST SUITE 225
KANSAS CITY, MO 64110
PH: (816) 756-5010

RESERVE "A" BEING RESERVED FOR RECREATIONAL
PURPOSES, TENNIS COURTS SWIMMING POOL AND
OPEN SPACE

B BAUGHMAN COMPANY P. A.
SURVEYING & ENGINEERING
315/282-7271 • 315 ELLIS • WICHITA, KANSAS 67211

4 DEC 1991