

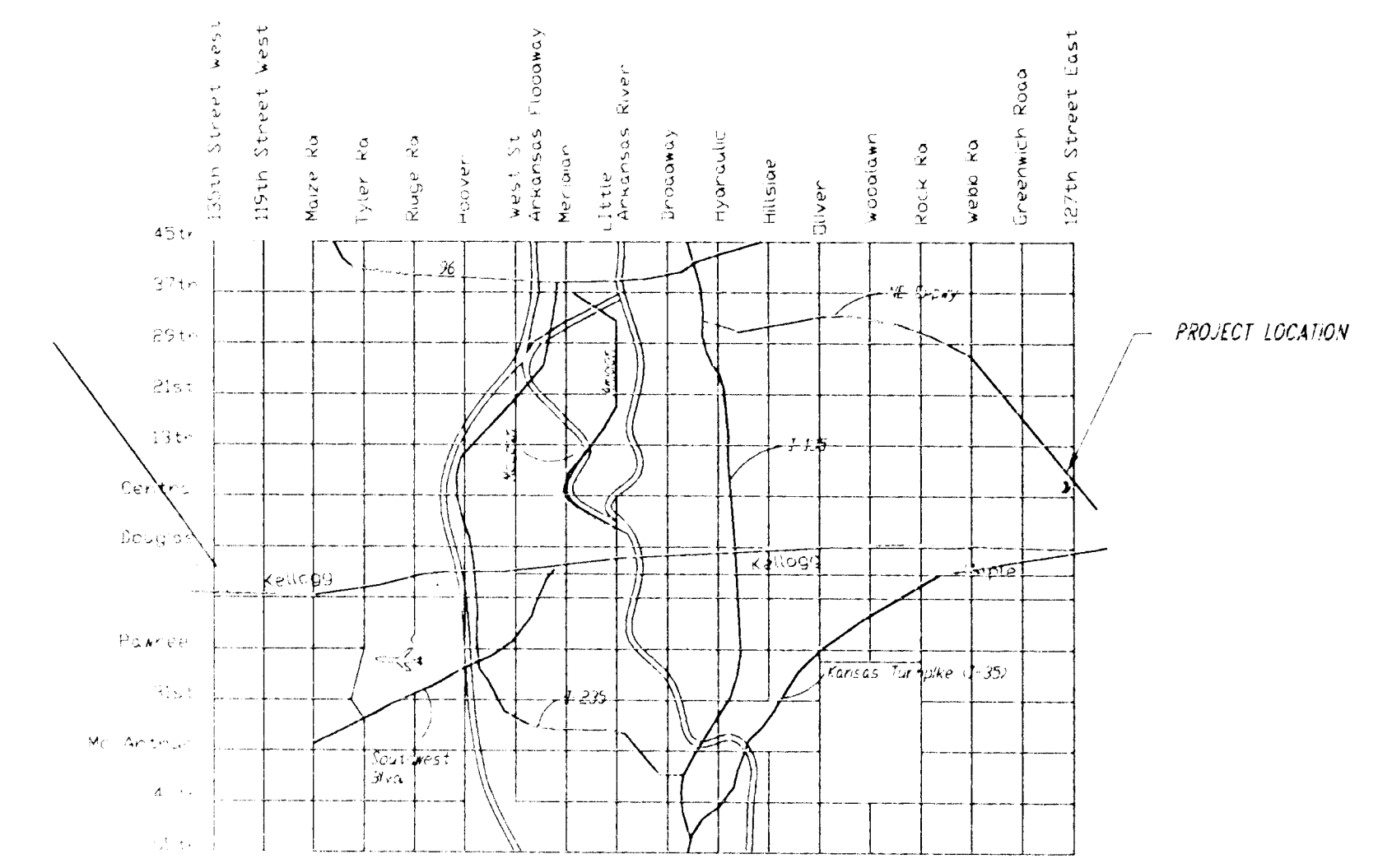
**Legend:**

- Tree
- Power Pole
- Telephone Box
- Existing Spot Elevations
- Existing Contours

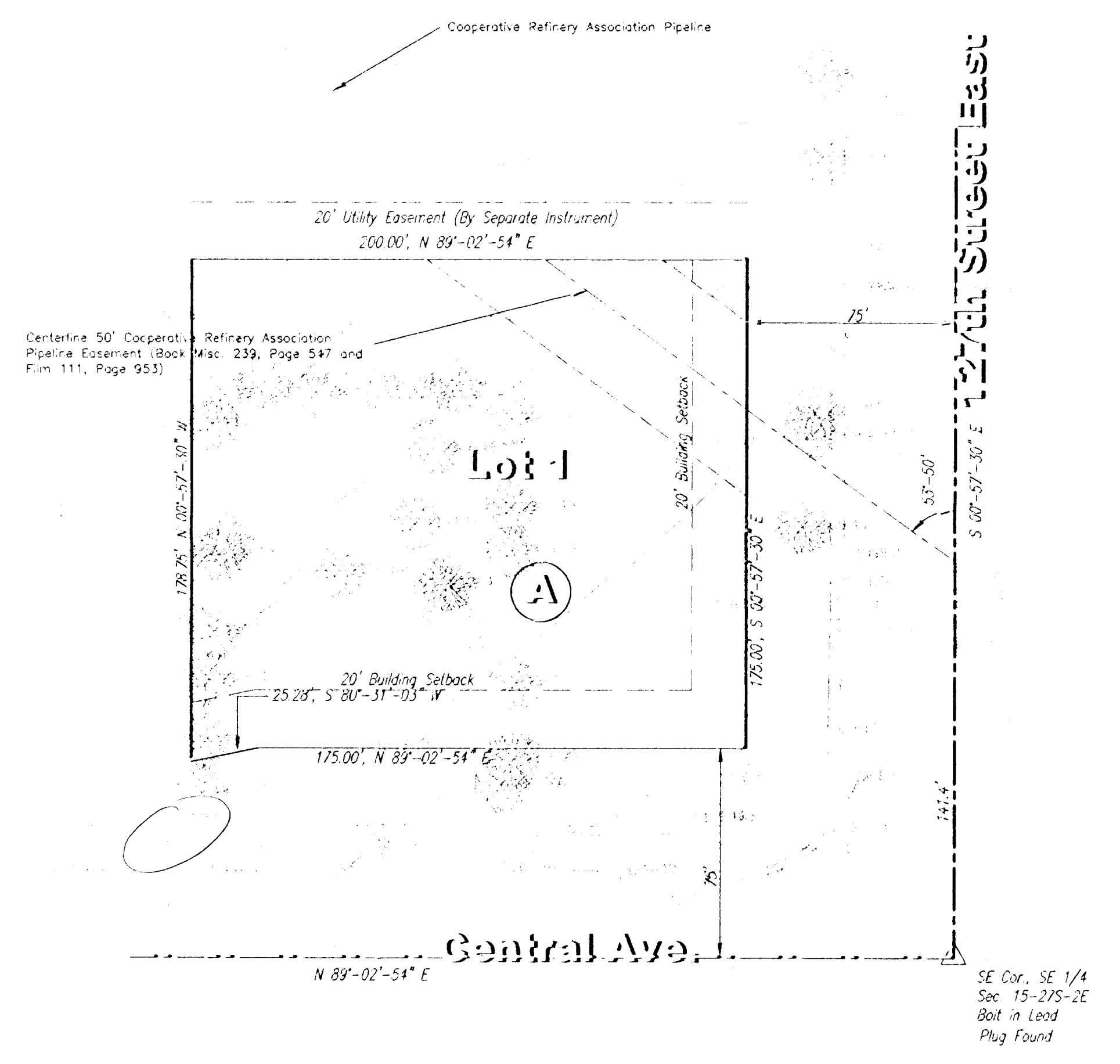


Scale: 1" = 40'

Note: Utility Companies were contacted through Kansas One-Call. Ticket No. is 33116. Utility companies who marked their facilities in field are shown on this survey. Prior to beginning construction utility companies should be contacted again in order to determine exact locations of their facilities.



Location Map



**Owner/Subdividers:**

1. Kapanor and Speed Mansour  
Aria International, LLC  
614 E. 1st, Murdock  
Wichita, Kansas

**Surveyor:**

Babar M. Khan, L.S.  
Municipal Engineers, P.A.  
254-Laura, Suite 201  
Wichita, Kansas 67211

**Total Area:**

0.7 Acres, more or less

**Zoning:**

GC

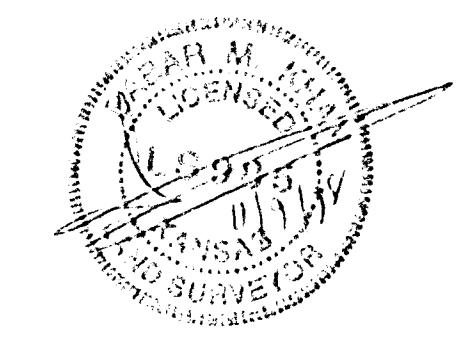
**Legal Description:**

That part of the Southeast Quarter of section 15, Township 27 South, Range 2 East of the 6th Principal Meridian, Sedgwick County, Kansas, described as commencing at the Southeast corner of said southeast quarter, Thence S 89°-02'-54" W, along the south line of said Southeast quarter, 75 feet; Thence N 00°-57'-40" N, parallel with the east line of said Southeast quarter, 75 feet for a piece of beginning; Thence N 00°-5'-30" N, 175 feet; Thence S 84°-02'-54" N, 200 feet; Thence S 00°-57'-30" E, 178.75 feet; Thence N 80°-31'-03" E, 25.25 feet; Thence N 89°-02'-54" E, 175 feet to the place of beginning.

**Bench Marks:**

Square cut on Traffic Signal Base @ SW Corner of intersection of Central and 127th Street East.  
Elev. = 1369.59

**PRELIMINARY PLAT  
ARIA INTERNATIONAL ADDITION  
TO  
SEDGWICK COUNTY, KANSAS**



<b>Aria International Addition</b>		
For Aria International LLC		
SCALE: 1" = 40'	APPROVED: B.K.	DRAWN BY: S.A.
DATE: 11-07-98	CHECKED: B.K.	
PROJECT NO: 98-83 (Municipal)		SHEET NO.: 1 OF 1
MUNICIPAL ENGINEERS, P.A. 254-Laura, Suite 201 Wichita, Kansas 67211 316-282-3812		