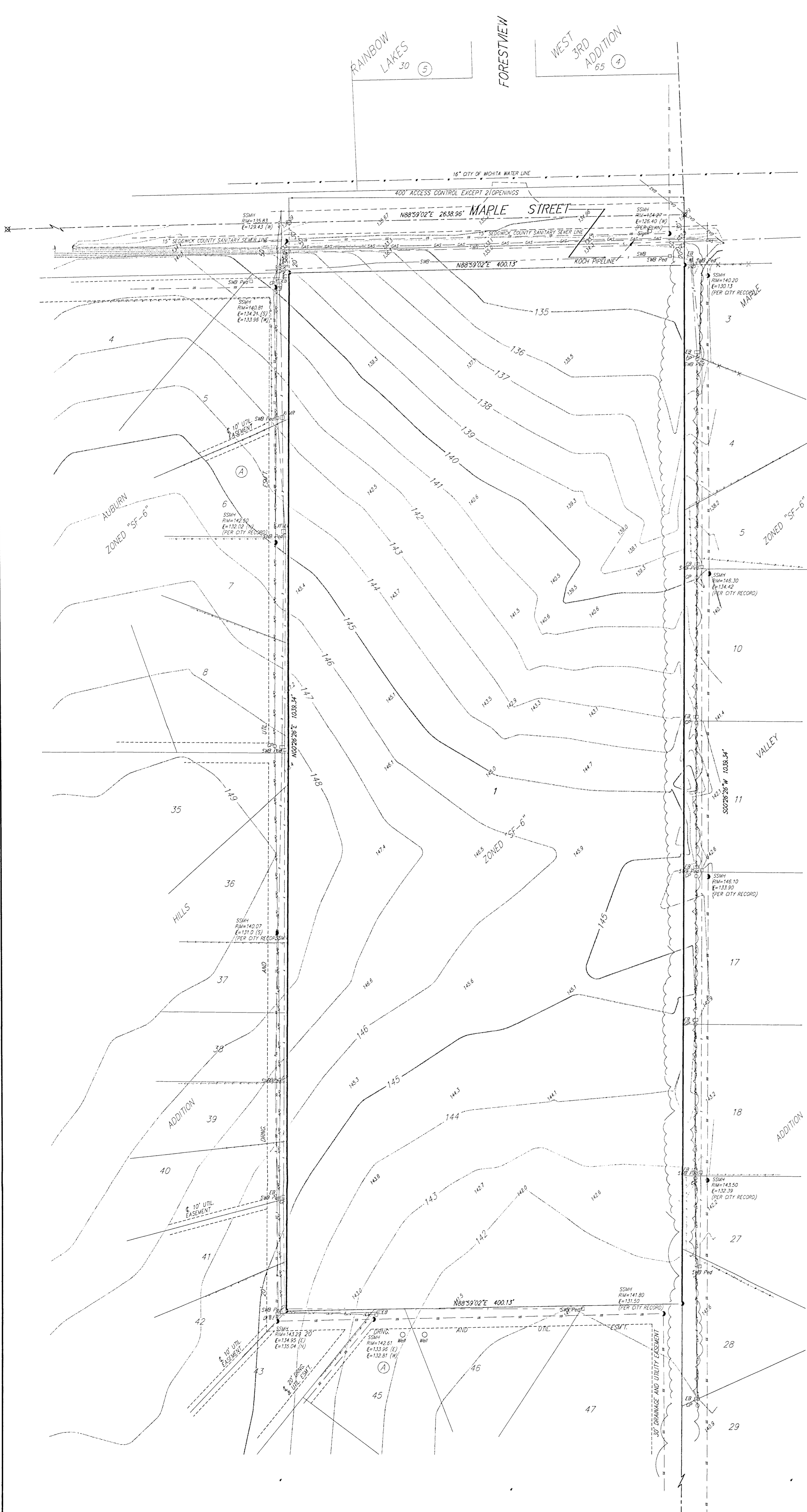


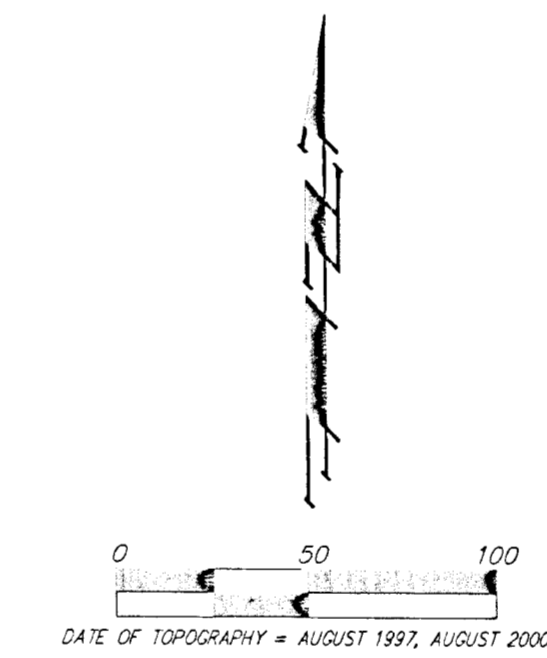
# ASCENSION LUTHERAN CHURCH 2ND ADDITION WICHITA, SEDGWICK COUNTY, KANSAS



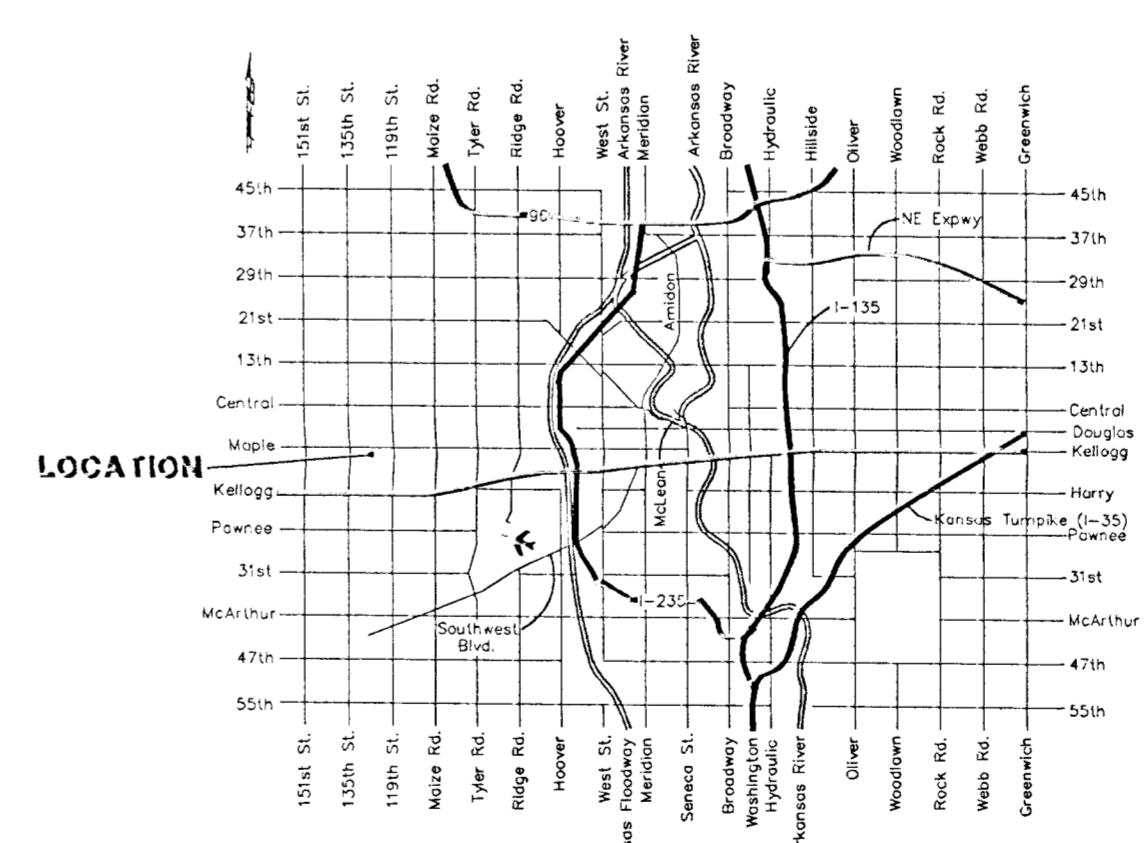
**OWNER:**  
 Ascension Lutheran Church  
 Attention: Pastor Gollt  
 842 N. Tyler Road  
 Wichita, KS 67212  
 Ph: (316) 722-4694

**LEGAL DESCRIPTION:**  
 The north 1083.00 feet of the east  
 400.00 feet of the NW 1/4 of Sec. 25,  
 Twp. 27-S, R-2-W of the 6th P.M.,  
 Sedgwick County, Kansas.

**BENCHMARK:**  
 COW benchmark SE corner hubguard on  
 Forestview, 86.00 North of centerline of  
 Maple. Elev.=135.66 City Datum



- CP ○ = Cable TV Pedestal
- DI ○ = Drop Inlet
- EB □ = Electric Box
- EP □ = Power Pole
- SP △ = Sign
- SSM ● = Sanitary Sewer Manhole
- SMB Pylt □ = Southwestern Bell Pedestal
- WPT ○ = Cased Well
- TRM □ = Transformer



- ★ = #1 REBAR W/ "BAUGHMAN" CAP (FOUND)
- = #4 REBAR W/ "BAUGHMAN" CAP (SET)
- = 4"x4" STONE (FOUND)
- ⊗ = 3/4" IRON IN THIMBLE (FOUND)
- (M) = MEASURED
- (D) = DESCRIBED
- (P) = PLATTED
- (C) = CALCULATED
- (C-P) = CALCULATED PER PLATTED INFO.
- (C-D) = CALCULATED PER DEED INFO.
- (C-DE) = DEED DESCRIPTION
- (C-DESC) = CALCULATED PER TRACT DESCRIPTION