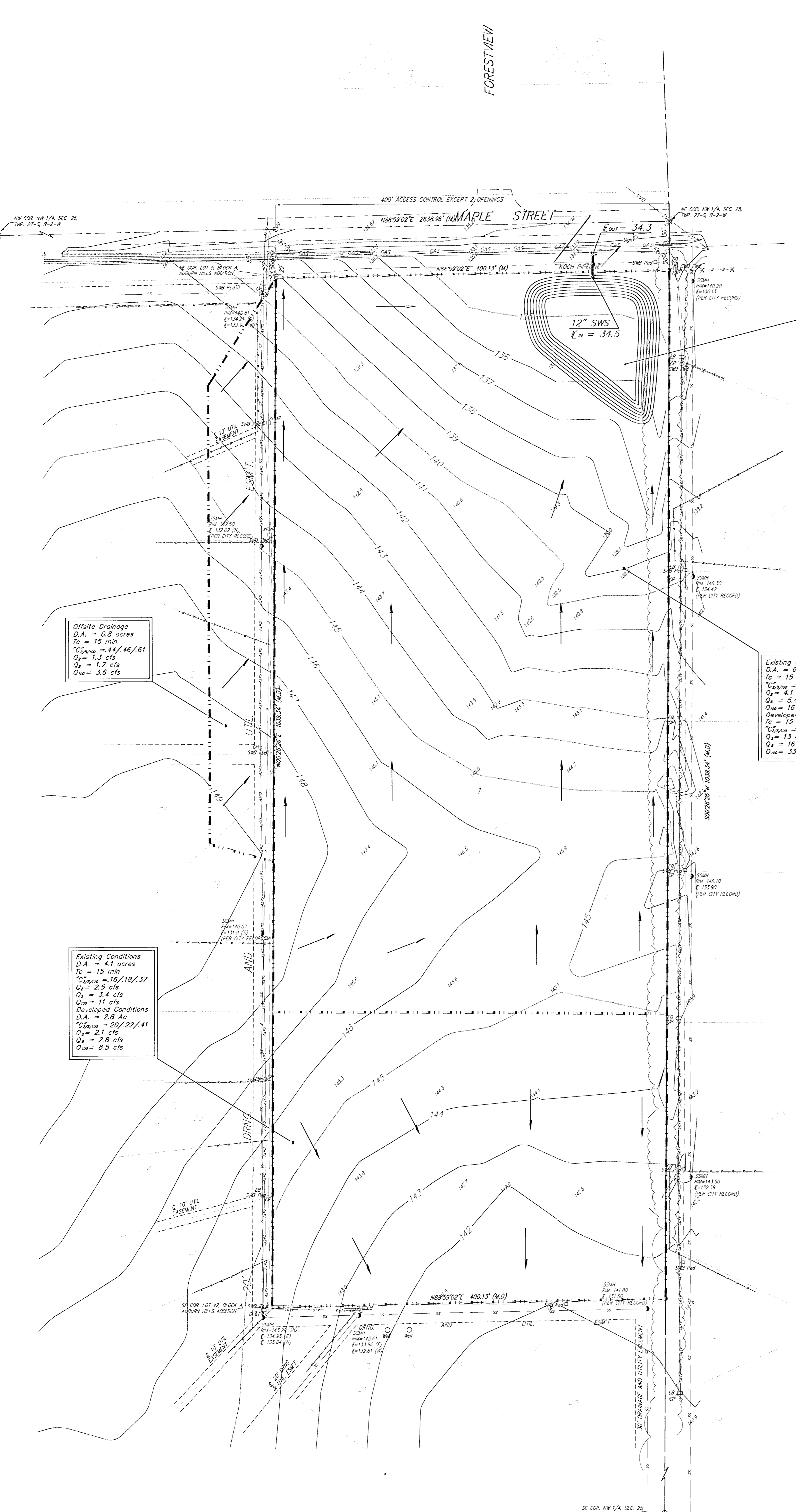


DRAINAGE PLAN

ASCENSION LUTHERAN CHURCH 2ND ADDITION

WICHITA, SEDGWICK COUNTY, KANSAS



Prop. Detention Pond
 W.S. = 128.00
 Q₁ = 0 cfs
 Q₂ = 0 cfs
 Q₃ = 0 cfs
 Q₄ = 4 cfs
 2-Yr. W.S. = 130.94
 5-Yr. W.S. = 132.94
 100-Yr. W.S. = 135.45

OWNER:
 Ascension Lutheran Church
 Attention: Pastor Galt
 842 N. Tyler Road
 Wichita, KS 67212
 Ph: (316) 722-1694

LEGAL DESCRIPTION:
 The north 1089.00 feet of the east
 400.00 feet of the NW 1/4 of Sec. 25,
 Twp. 27-S, R-2-W of the 6th P.M.,
 Sedgewick County, Kansas.

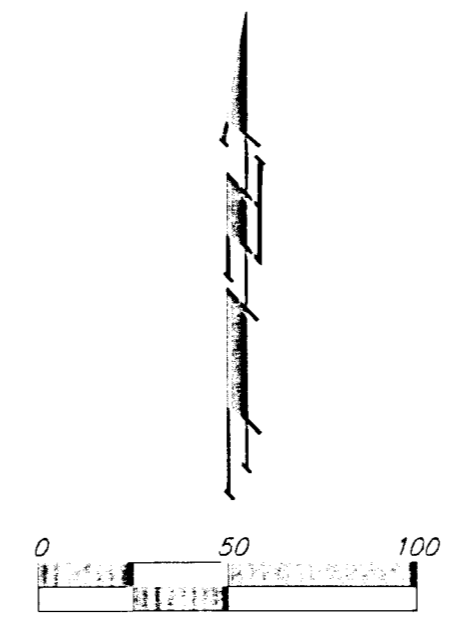
BENCHMARK:
 COW benchmark SE corner hubguard on
 Forestview, 86.00 North of centerline of
 Maple. Elev. = 135.66 City Datum

Drainage Note:
 Soil Type: Vanoss (B) / Hydrologic Group "B"

Offsite Drainage
 D.A. = 0.8 acres
 T_c = 15 min
 C_o = 44/45/61
 Q₁ = 1.3 cfs
 Q₂ = 1.7 cfs
 Q₃ = 3.6 cfs

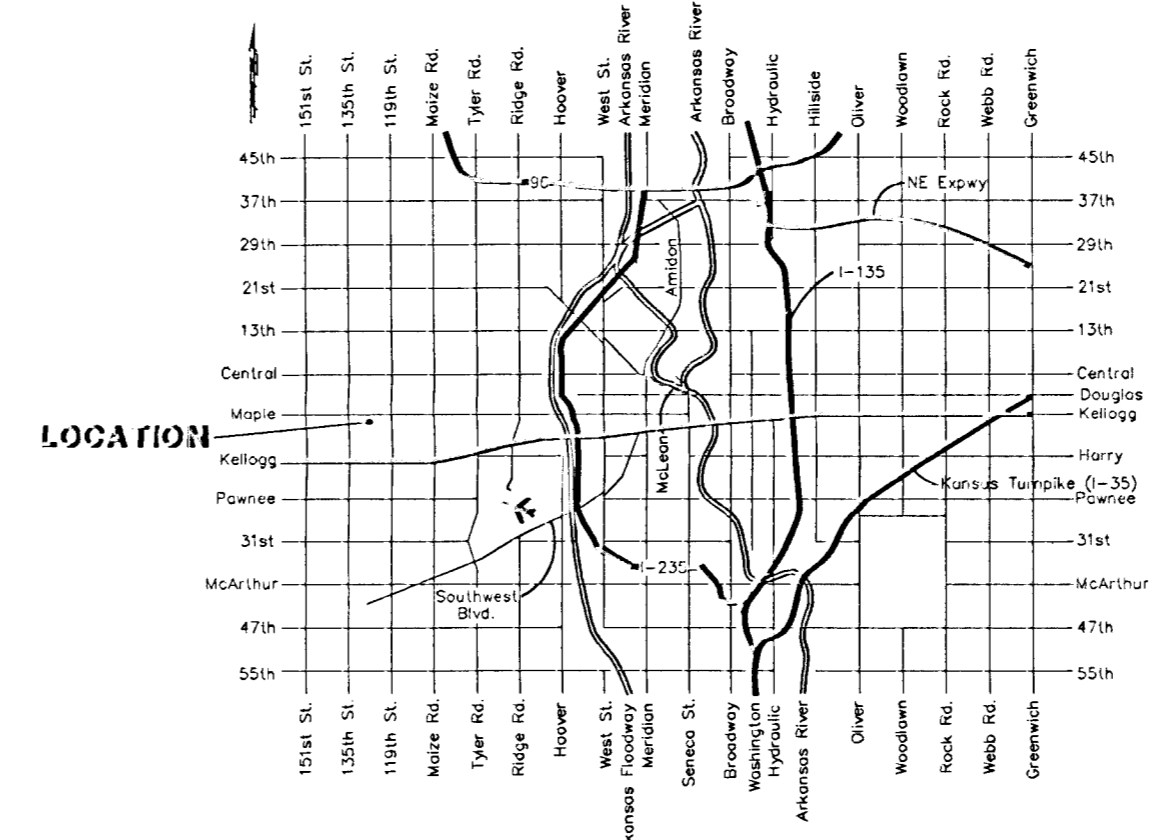
Existing Conditions
 D.A. = 6.7 acres
 T_c = 15 min
 C_o = 20/22/41
 Q₁ = 4.1 cfs
 Q₂ = 5.4 cfs
 Q₃ = 16 cfs
Developed Conditions
 T_c = 15 min
 C_o = 42/51/66
 Q₁ = 13 cfs
 Q₂ = 16 cfs
 Q₃ = 33 cfs

Existing Conditions
 D.A. = 4.1 acres
 T_c = 15 min
 C_o = 18/18/37
 Q₁ = 2.5 cfs
 Q₂ = 3.4 cfs
 Q₃ = 11 cfs
Developed Conditions
 D.A. = 2.8 Ac
 C_o = 20/22/41
 Q₁ = 2.1 cfs
 Q₂ = 2.8 cfs
 Q₃ = 8.5 cfs



- ▲ = #4 REBAR W/ "BAUGHMAN" CAP (FOUND)
- = #4 REBAR W/ "BAUGHMAN" CAP (SET)
- ⊙ = 4"x4" STONE (FOUND)
- ⊗ = 3/4" IRON IN THUMB (FOUND)
- (M) = MEASURED
- (D) = DESCRIBED
- (P) = PLATED
- (C) = CALCULATED
- (C-P) = CALCULATED PER PLATED INFO.
- (C-D) = CALCULATED PER DEED INFO.
- (DEED) = DEED DESCRIPTION
- (C-DEED) = CALCULATED PER TRACT DESCRIPTION

- OP ○ = Cable TV Pedestal
- DI ■ = Drop Inlet
- EB □ = Electric Box
- EP □ = Power Pole
- SWP ○ = Sign
- SSMH ● = Sanitary Sewer Manhole
- SSW Ped □ = Southwestern Bell Pedestal
- HW ○ = Cased Well
- TRM □ = Transformer



7 AUGUST 2000