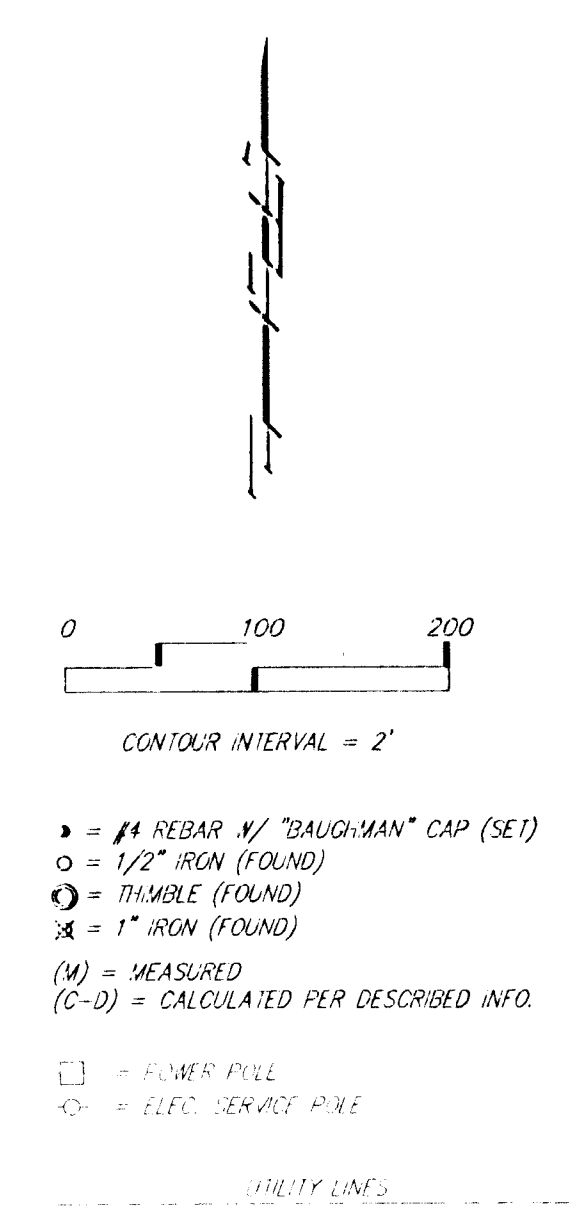
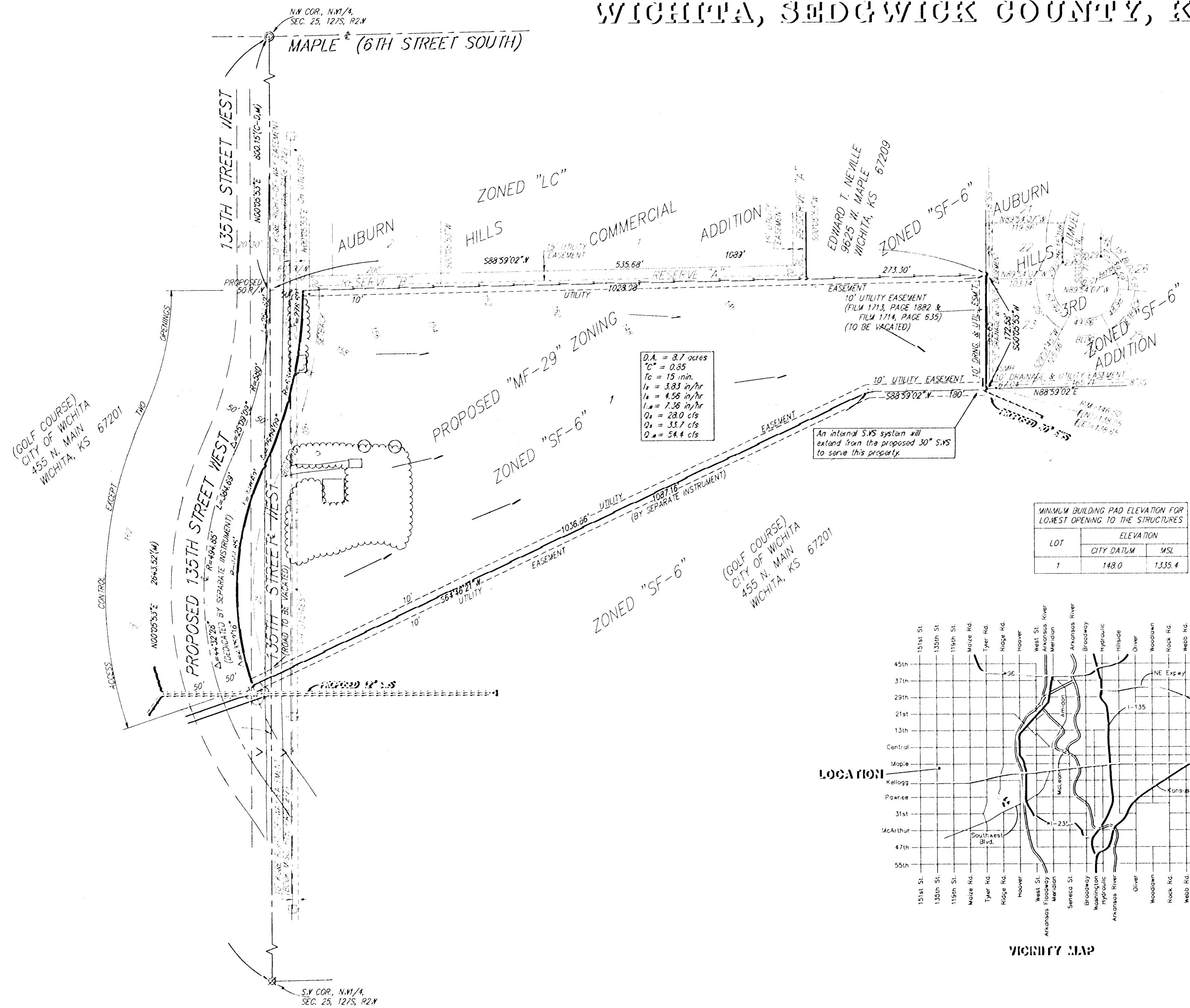


# DRAINAGE PLAN

## AUBURN HILLS 7TH ADDITION

### WICHITA, SEDGWICK COUNTY, KANSAS



- ⊕ = #4 REBAR w/ "BAUGHMAN" CAP (SET)
- = 1/2" IRON (FOUND)
- ⊙ = TIMBER (FOUND)
- ⊗ = 1" IRON (FOUND)
- (M) = MEASURED
- (C-D) = CALCULATED PER DESCRIBED INFO.
- = POWER POLE
- ⊕ = ELEC. SERVICE POLE

**BENCHMARKS:**

CITY DISC - 135TH STREET WEST & MAPLE  
NE CORNER OF INTERSECTION ON HEADWALL,  
34' SW TO IRON ⊙ SEC. COR.  
ELEV. = 150.20 CITY DATUM (1337.60 M.S.L.)

CITY DISC - 1/2 MI. SOUTH OF MAPLE ON  
135TH STREET WEST, 34' EAST OF & 135TH,  
17' NORTH OF & BRIDGE (E-W), 2' NORTH  
OF 1/4 COR., 1' WEST OF FENCE SOUTH.  
ELEV. = 156.63 CITY DATUM (1344.03 M.S.L.)

