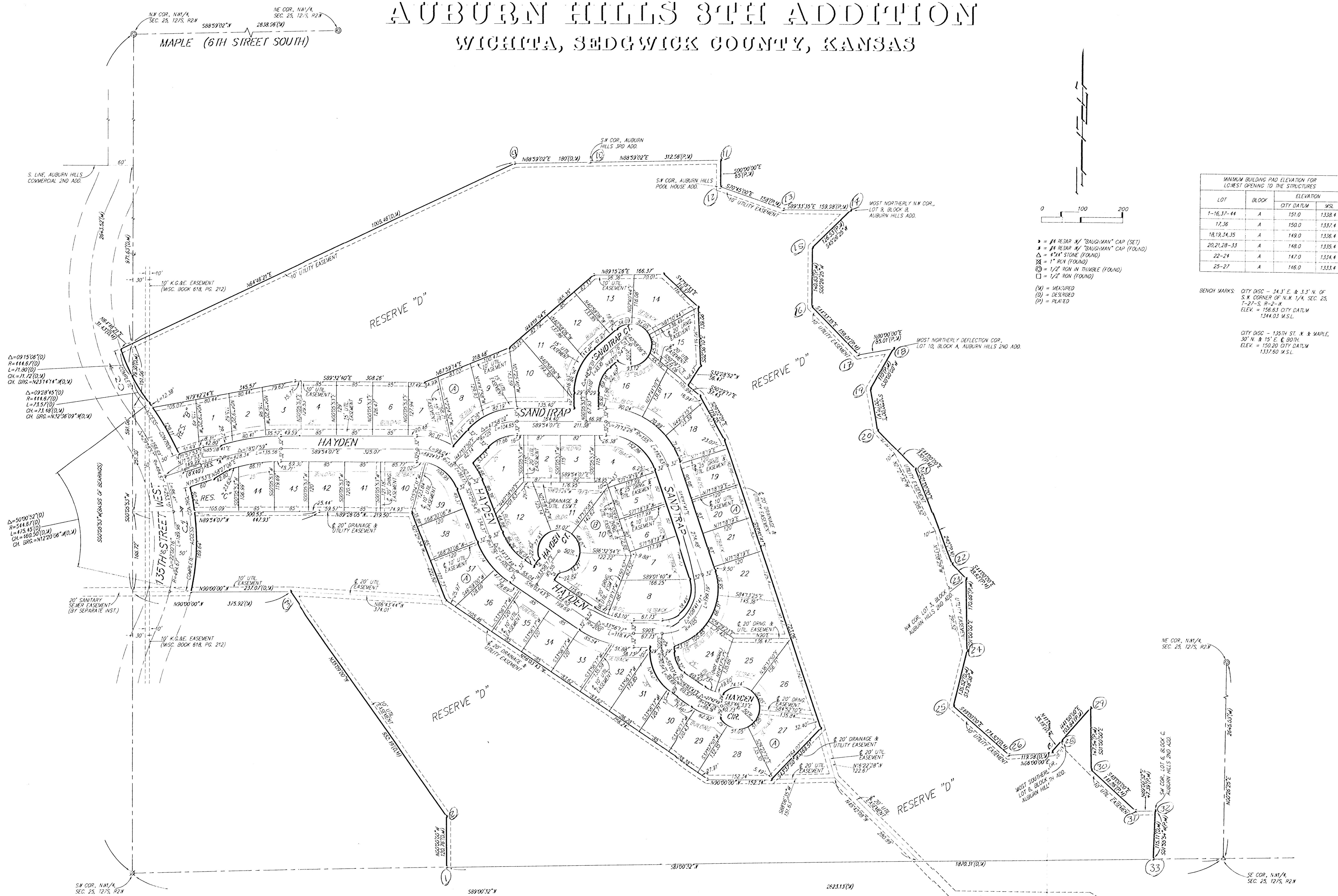
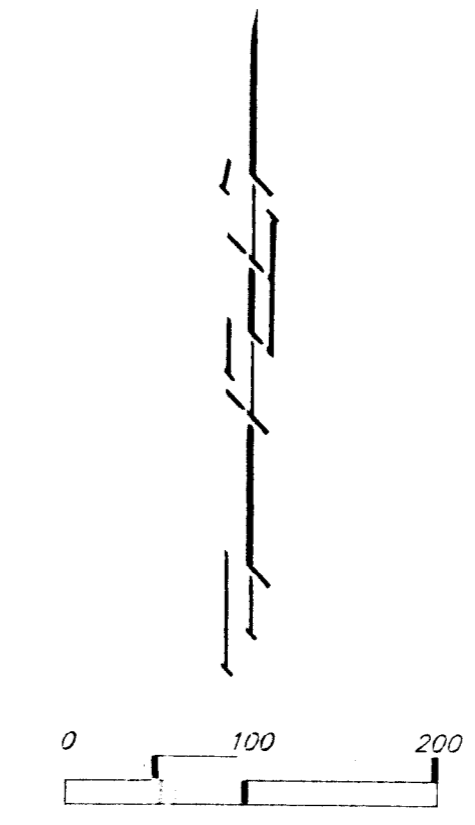


# AUBURN HILLS 3TH ADDITION

## WICHITA, SEDGWICK COUNTY, KANSAS



MINIMUM BUILDING PAD ELEVATION FOR LOWEST OPENING TO THE STRUCTURES			
LOT	BLOCK	CITY DATUM	MSL
1-16, 37-44	A	151.0	1,338.4
17, 36	A	150.0	1,332.4
18, 19, 34, 35	A	149.0	1,326.4
20, 21, 28-33	A	148.0	1,320.4
22-24	A	147.0	1,314.4
25-27	A	146.0	1,308.4



- ▲ = #4 REBAR W/ "BAUGHMAN" CAP (SET)
- ▲ = #4 REBAR W/ "BAUGHMAN" CAP (FOUND)
- △ = #4" STONE (FOUND)
- ⊗ = 1" RIG (FOUND)
- ⊙ = 1/2" RIG IN THUMB (FOUND)
- = 1/2" RIG (FOUND)
- (M) = MEASURED
- (D) = DESCRIBED
- (P) = PLAINED

**BENCH MARKS:** CITY DISC - 34.5' E. & 3.3' N. OF S.W. CORNER OF N.W. 1/4, SEC. 25, T-27-S, R-2-W. ELEV. = 156.63 CITY DATUM, 1344.03 M.S.L.

CITY DISC - 135TH ST. N. & MAPLE, 30' N. & 15' E. OF BOTH T-27-S, R-2-W. ELEV. = 150.20 CITY DATUM, 1337.60 M.S.L.

Δ = 0915'06"(D)  
R = 114.67'(D)  
L = 71.80'(D)  
CH = 71.21'(D, M)  
CH BRG = 223°14'14" W (D, M)

Δ = 50°00'52"(D)  
R = 144.87'(D)  
L = 47.45'(D)  
CH = 160.50'(D, M)  
CH BRG = 112°20'06" W (D, M)