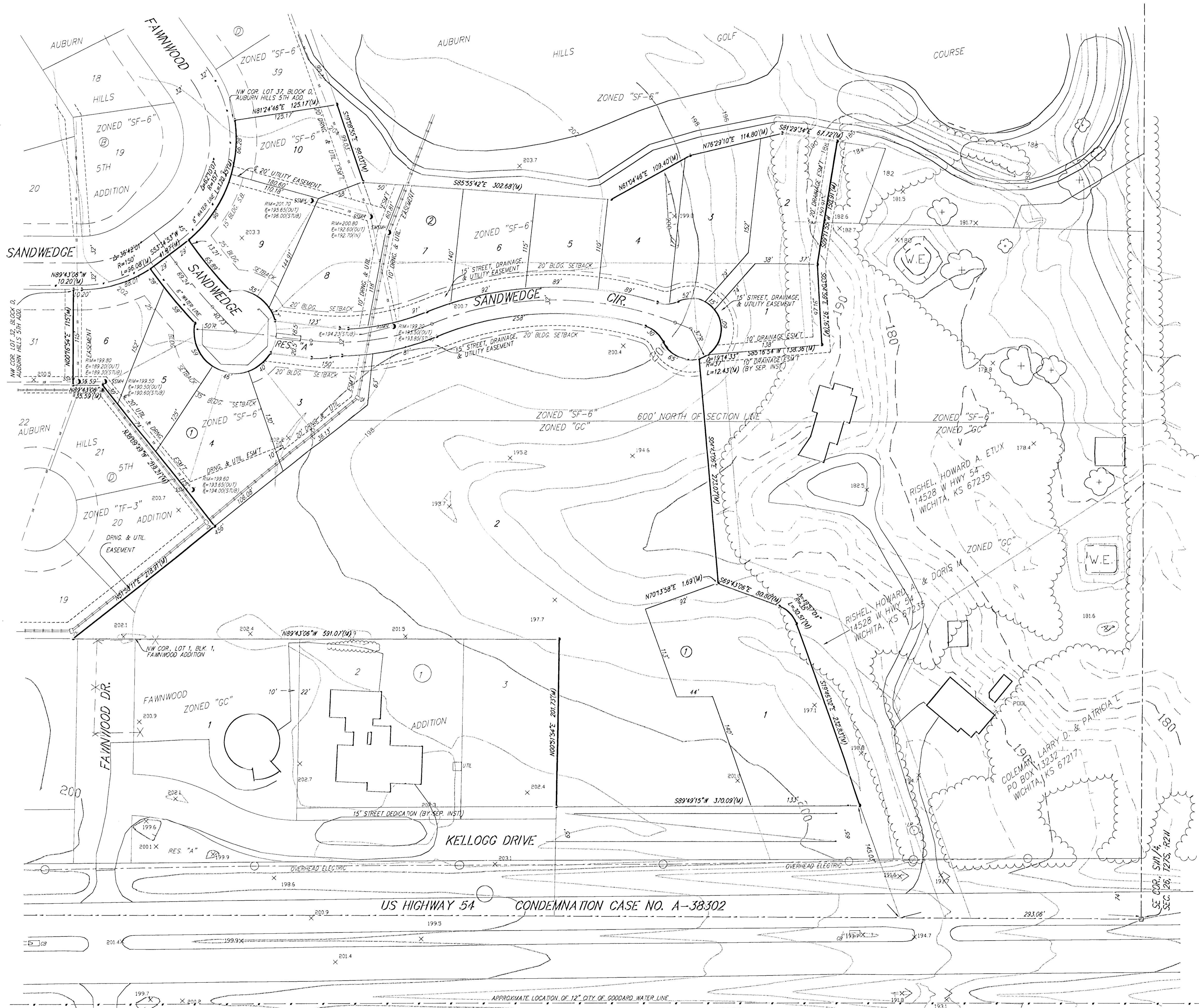


PRELIMINARY PLAT
AUBURN HILLS 11TH ADDITION
 WICHITA, SEDGWICK COUNTY, KANSAS

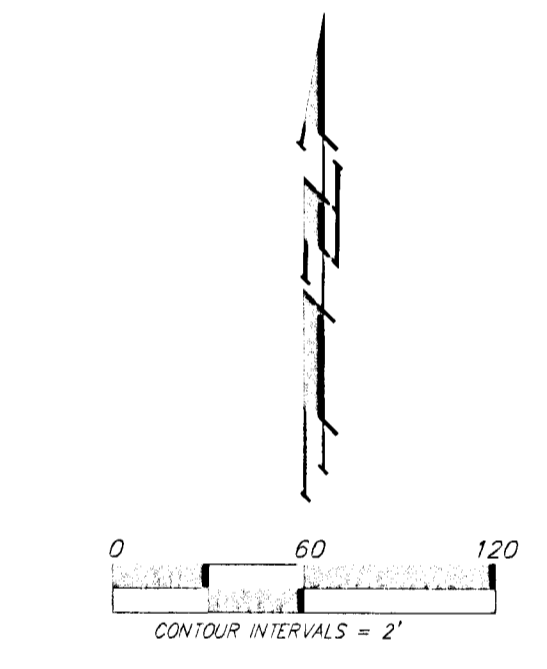


DEVELOPER:
 WEST WICHITA DEVELOPMENT, INC.
 ATTN: JAY W. RUSSELL
 12502 W. 13TH
 WICHITA, KANSAS 67235
 PH (316) 644-6030

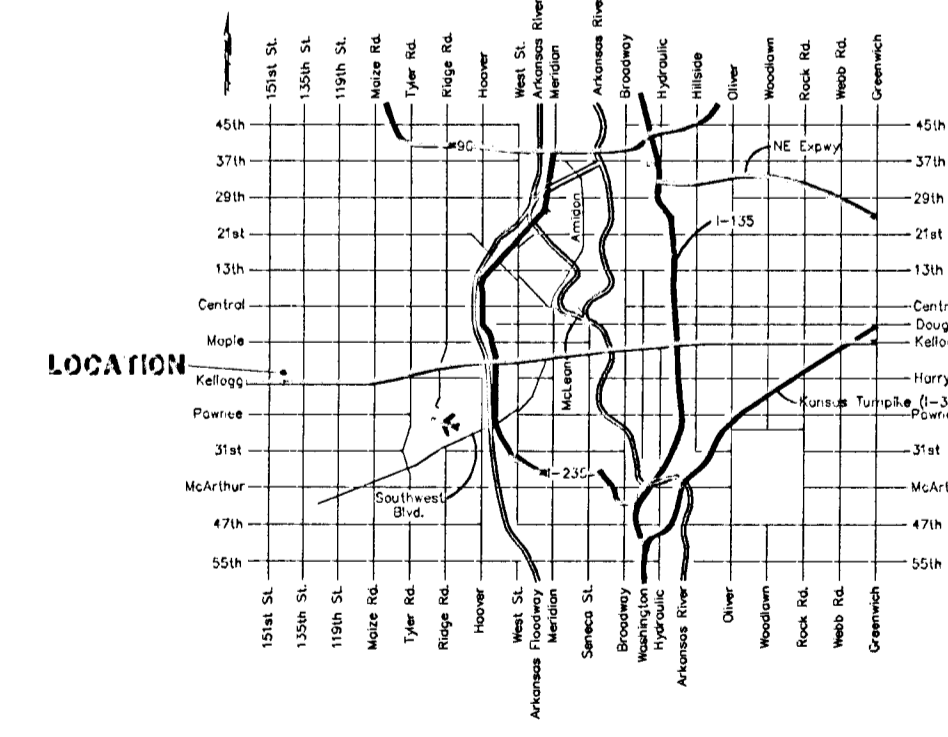
LEGAL DESCRIPTION:
 A REPLAT OF LOTS 32, 33, 34, 35, 36, 37, AND 38,
 BLOCK D, AUBURN HILLS 5TH ADDITION, WICHITA,
 SEDGWICK COUNTY, KANSAS, TOGETHER WITH THAT
 PART OF SANDWEDGE CIR. LYING BETWEEN SAID LOTS,
 TOGETHER WITH A TRACT OF LAND LOCATED IN THE
 SW 1/4 OF SEC. 26, T1P. 27-S, R-2-W.

BENCHMARK:
 TOP OF 1" IRON, 12" DEEP, W/4 COR., SEC. 26, T1P.
 27-S, R-2-W. ELEV. = 1386.53 M.S.L. (2001.13 CITY
 DATUM)

RESERVE "A" IS HEREBY RESERVED FOR STREETS,
 UTILITIES, LANDSCAPING, BERMS, OPEN SPACE, AND
 ENTRY MONUMENTS.



NOTE:
 1. THE TOPOGRAPHY SHOWN ON THIS PRELIMINARY PLAT
 WAS COMPILED BY AERIAL PHOTO ON JUNE 1998. THIS
 TOPOGRAPHY DOES NOT REFLECT ANY CHANGES THAT
 HAVE OCCURRED DURING CONSTRUCTION OF THE AUBURN
 HILLS GOLF COURSE.
 2. SANITARY SEWER INFORMATION IS PER PLAN.



- CB = Catch Basin
- DI = Drop Inlet
- FM = Fire Hydrant
- LP = Light Pole
- PP = Power Pole
- Sign = Sign
- SSMH = Sanitary Sewer Manhole
- SSWH = Stormwater Sewer Manhole
- WV = Water Valve
- # = # REBAR W/ "BAUGHMAN" CAP (SET)
- (C) = SECTION CORNER(FOUND)
- (M) = MEASURED
- (D) = DESCRIBED
- (P) = PLATED