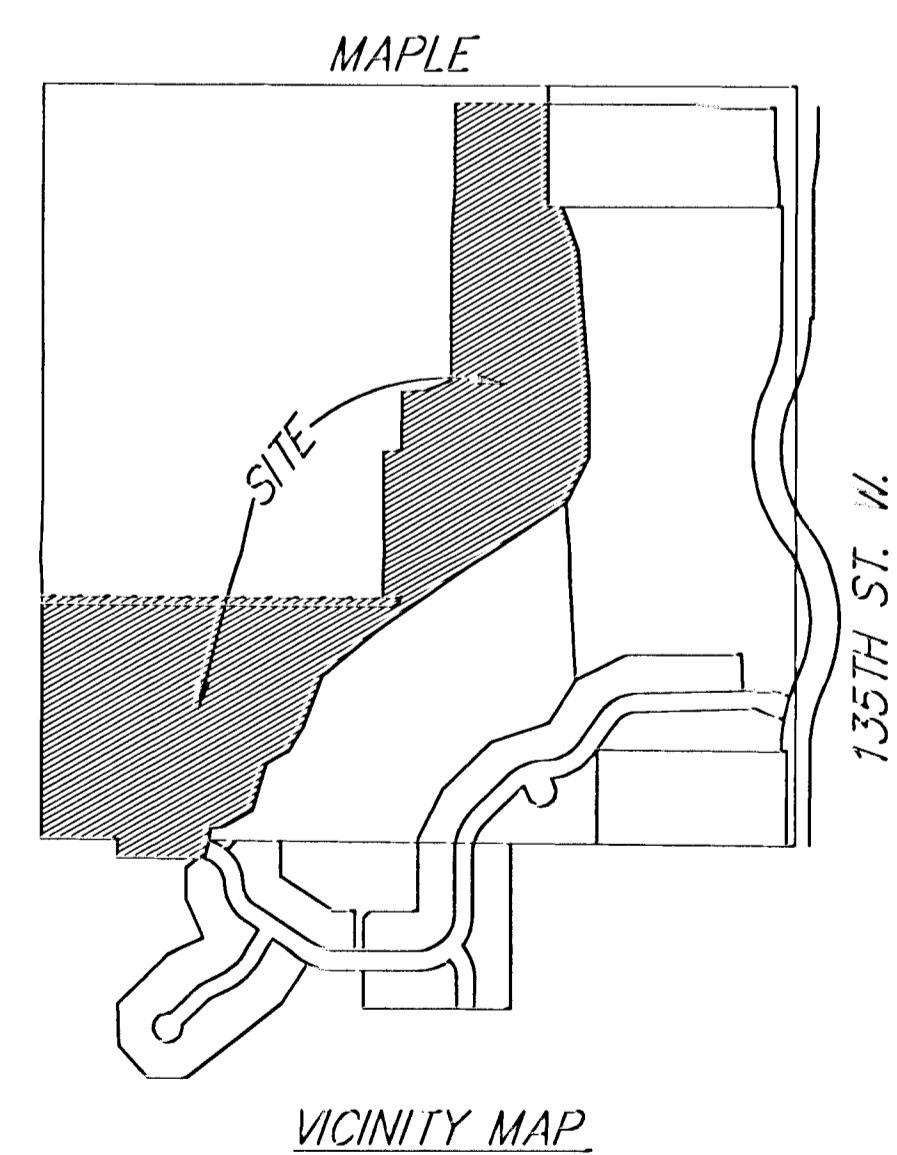
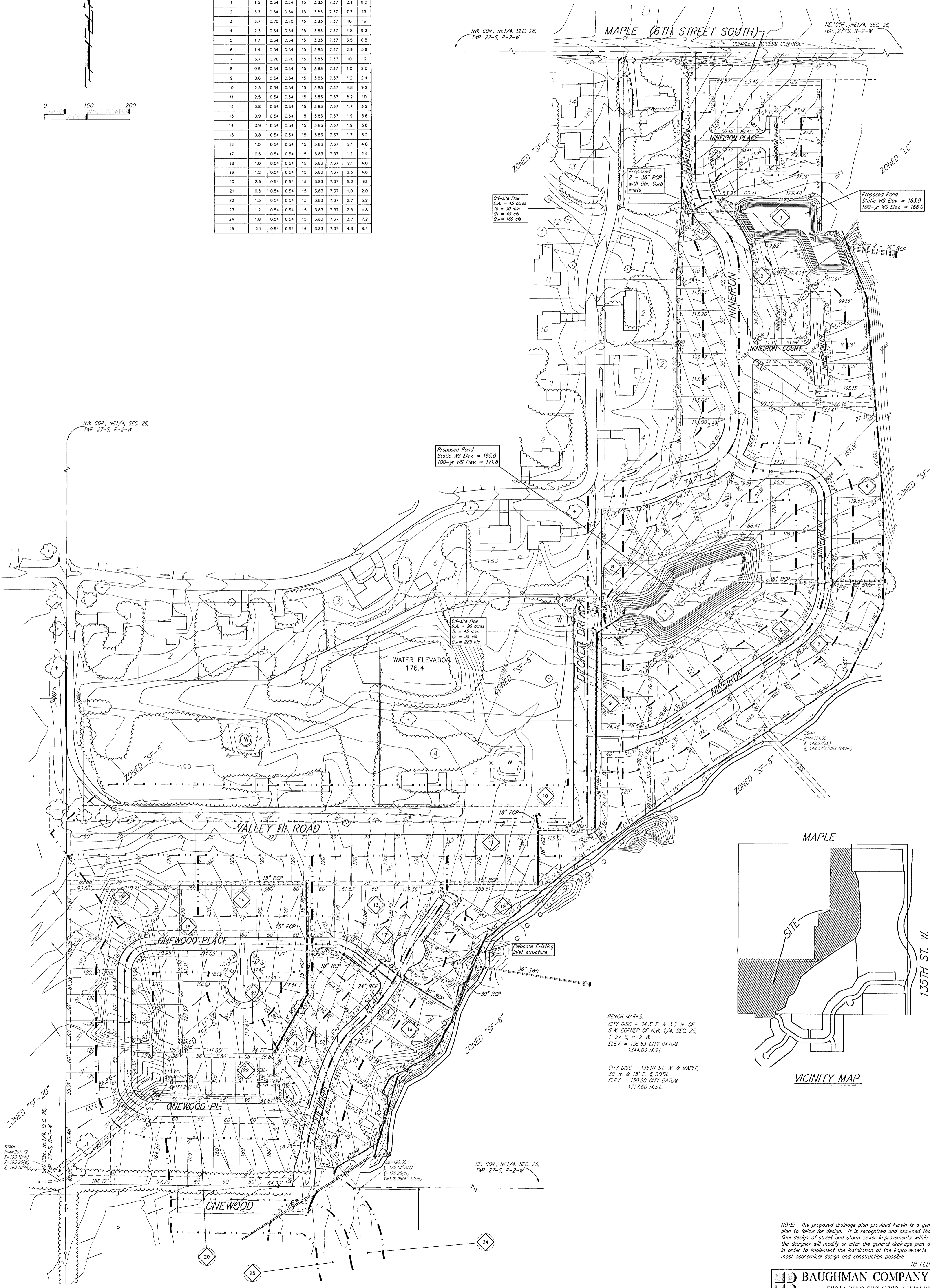
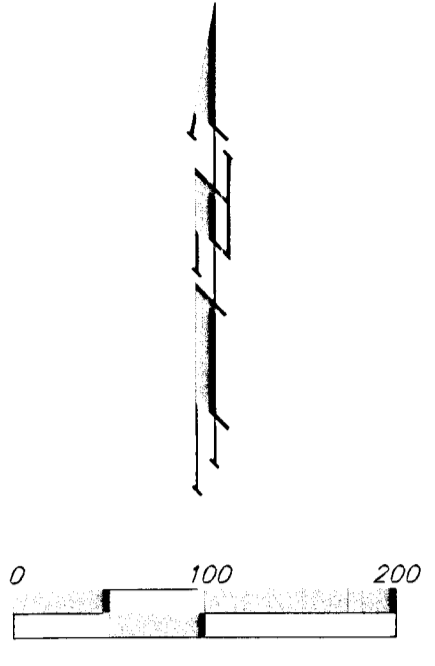


DRAINAGE PLAN

AUBURN HILLS 12TH ADDITION

WICHITA, SEDGWICK COUNTY, KANSAS

Drainage Area	Area (acres)	C _s	C _m	T _t (min)	L _t (ft)	Q ₁ (cfs)	Q ₂ (cfs)	Q ₃ (cfs)
1	1.5	0.54	0.54	15	3.85	7.37	3.1	6.0
2	3.7	0.54	0.54	15	3.85	7.37	7.7	15
3	3.7	0.70	0.70	15	3.85	7.37	10	19
4	2.3	0.54	0.54	15	3.85	7.37	4.8	9.2
5	1.7	0.54	0.54	15	3.85	7.37	3.5	6.8
6	1.4	0.54	0.54	15	3.85	7.37	2.9	5.6
7	3.7	0.70	0.70	15	3.85	7.37	10	19
8	0.5	0.54	0.54	15	3.85	7.37	1.0	2.0
9	0.6	0.54	0.54	15	3.85	7.37	1.2	2.4
10	2.3	0.54	0.54	15	3.85	7.37	4.8	9.2
11	2.5	0.54	0.54	15	3.85	7.37	5.2	10
12	0.8	0.54	0.54	15	3.85	7.37	1.7	3.2
13	0.9	0.54	0.54	15	3.85	7.37	1.9	3.6
14	0.9	0.54	0.54	15	3.85	7.37	1.9	3.6
15	0.8	0.54	0.54	15	3.85	7.37	1.7	3.2
16	1.0	0.54	0.54	15	3.85	7.37	2.1	4.0
17	0.6	0.54	0.54	15	3.85	7.37	1.2	2.4
18	1.0	0.54	0.54	15	3.85	7.37	2.1	4.0
19	1.2	0.54	0.54	15	3.85	7.37	2.5	4.8
20	2.5	0.54	0.54	15	3.85	7.37	5.2	10
21	0.5	0.54	0.54	15	3.85	7.37	1.0	2.0
22	1.3	0.54	0.54	15	3.85	7.37	2.7	5.2
23	1.2	0.54	0.54	15	3.85	7.37	2.5	4.8
24	1.8	0.54	0.54	15	3.85	7.37	3.7	7.2
25	2.1	0.54	0.54	15	3.85	7.37	4.3	8.4



BENCHMARKS:
 CITY DISC - 34.3' E. & 3.3' N. OF
 S.W. CORNER OF N.W. 1/4, SEC. 25,
 T-27-S, R-2-W.
 ELEV. = 156.63 CITY DATUM
 1544.03 M.S.L.

CITY DISC - 135TH ST. W. & MAPLE,
 30' N. & 15' E. & BOTH.
 ELEV. = 150.20 CITY DATUM
 1327.60 M.S.L.

NOTE: The proposed drainage plan provided herein is a generally defined plan to follow for design. It is recognized and assumed that upon the final design of street and storm sewer improvements within this plot that the designer will modify or alter the general drainage plan as necessary in order to implement the installation of the improvements to obtain the most economical design and construction possible.

18 FEBRUARY 2000