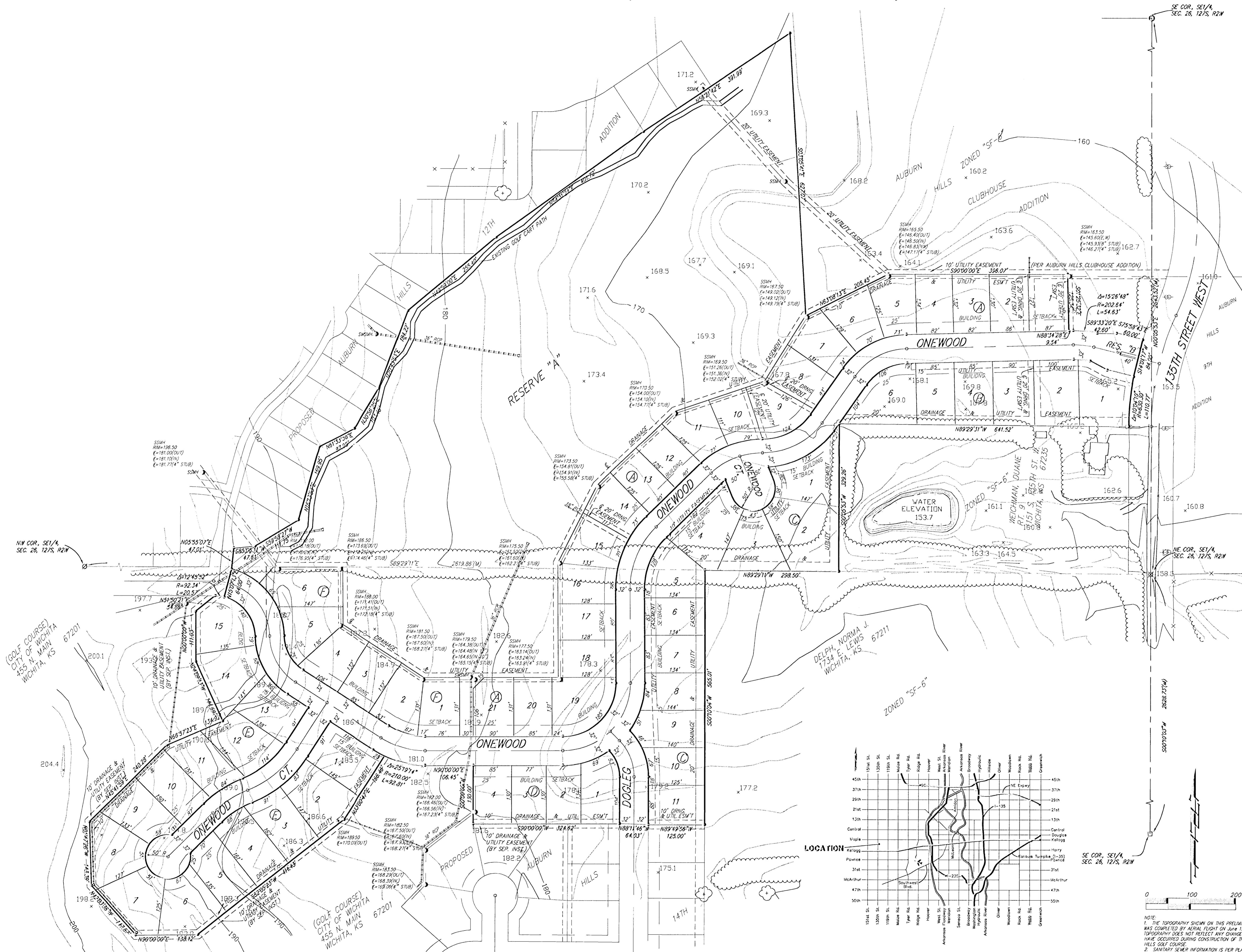


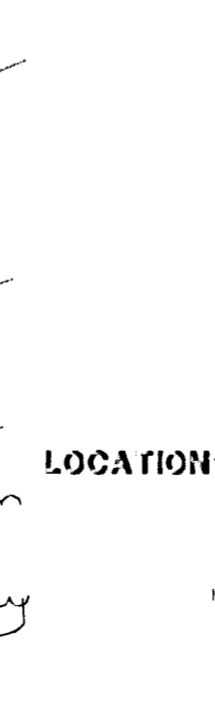
PRELIMINARY PLAT
AUBURN HILLS 13TH ADDITION
 WICHITA, SEDGWICK COUNTY, KANSAS



NW COR, SE 1/4, SEC. 26, 12/5, R2W

(GOLF COURSE) CITY OF WICHITA, WICHITA, KS

(GOLF COURSE) CITY OF WICHITA, WICHITA, KS



LEGAL DESCRIPTION: A TRACT IN THE NE 1/4 AND THE SE 1/4 OF SEC. 26, TWP. 27-S, R-2-W OF THE 6TH P.M., SEDGWICK COUNTY, KANSAS.

BENCHMARK: CITY DISC - 34.3' E. & 3.3' N. OF S.W. CORNER OF N.W. 1/4, SEC. 25, T-27-S, R-2-W. ELEV.=156.63 CITY DATUM (1344.03 M.S.L.)

RESERVE "A" IS HEREBY RESERVED FOR GOLF COURSE AND GOLF COURSE RELATED PURPOSES. RESERVE "B" IS HEREBY RESERVED FOR STREETS, UTILITIES, LANDSCAPING, BERMS, OPEN SPACE, AND ENTRY MONUMENTS.

OWNER: WEST WICHITA DEVELOPMENT, INC. 417N. JAY W. RUSSELL 12602 W. 13TH WICHITA, KANSAS 67215 PH (316) 644-6030

CITY OF WICHITA 455 N. MAIN WICHITA, KS 67201

- SSWH = Stormwater Sewer Manhole
- SSMH = Sanitary Sewer Manhole
- ⊕ = #4 REBAR W/ "BAUGHMAN" CAP (SET)
- (M) = MEASURED
- (D) = DESCRIBED
- (P) = PLATTED
- (C) = CALCULATED
- (C-P) = CALCULATED PER PLATTED INFO.
- ⊘ = 3/4" IRON (FOUND)
- ⊗ = 1" IRON (FOUND)
- ⊚ = #8 REBAR (FOUND)
- ⊙ = 1/2" IRON (FOUND)

NOTE:
 1. THE TOPOGRAPHY SHOWN ON THIS PRELIMINARY PLAT WAS OBTAINED BY AERIAL FLIGHT ON APRIL 1998. THIS TOPOGRAPHY DOES NOT REFLECT ANY CHANGES THAT HAVE OCCURRED DURING CONSTRUCTION OF THE AUBURN HILLS GOLF COURSE.
 2. SANITARY SEWER INFORMATION IS PER PLAN.

14 JANUARY 2000

BAUGHMAN COMPANY P.A.
 ENGINEERING, SURVEYING, & PLANNING
 318-282-7221 • 315 ELLIS • WICHITA, KANSAS 67211