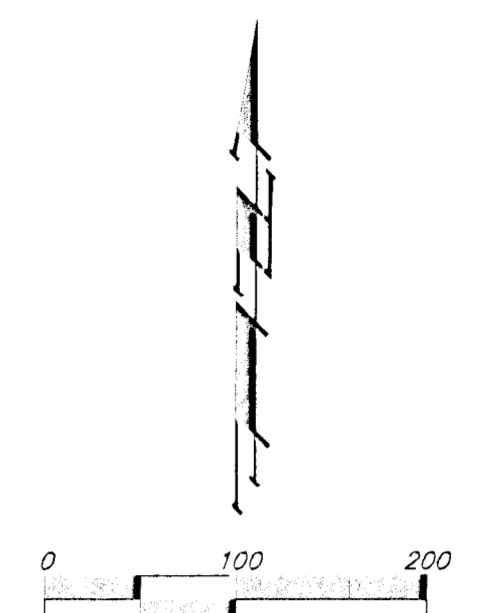
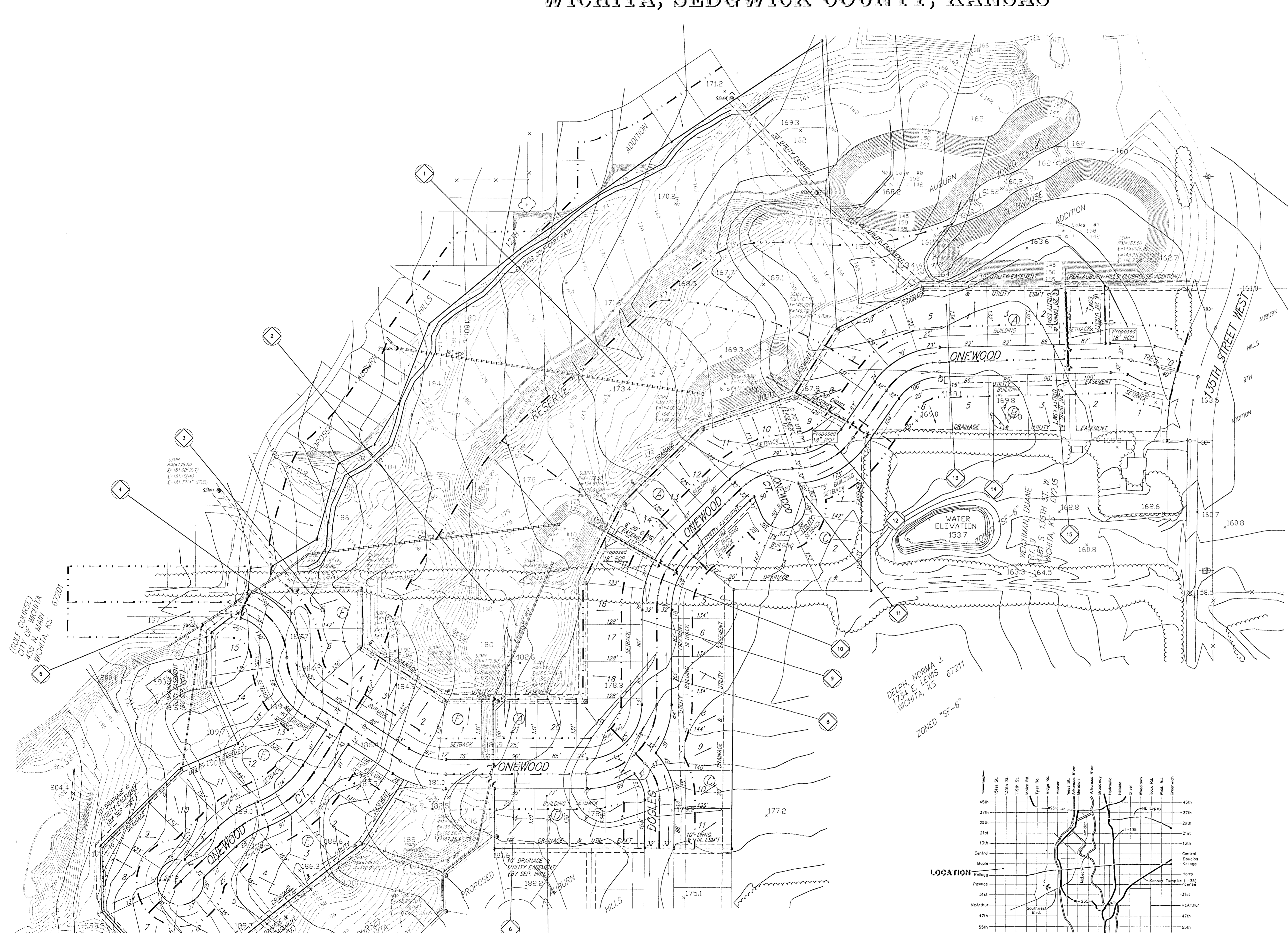


# DRAINAGE CONCEPT AUBURN HILLS 18TH ADDITION WICHITA, SEDGWICK COUNTY, KANSAS



NOTE:  
1. THE TOPOGRAPHY SHOWN ON THIS PRELIMINARY PLAN WAS COMPLETED BY AERIAL FLIGHT ON JUNE 1998. THIS TOPOGRAPHY DOES NOT REFLECT ANY CHANGES THAT HAVE OCCURRED DURING CONSTRUCTION OF THE AUBURN HILLS GOLF COURSE.  
2. SANITARY SEWER INFORMATION IS PER PLAN.

Drainage Area	Area (Acres)	C <sub>s</sub>	C <sub>m</sub>	T <sub>1</sub> (min)	T <sub>2</sub> (min)	Q <sub>1</sub> (cfs)	Q <sub>2</sub> (cfs)	
1	3.6	0.4	0.45	15	3.83	7.37	5.5	8.0
2	4.2	0.4	0.45	15	3.83	7.37	6.4	14
3	0.5	0.54	0.60	15	3.83	7.37	1.0	2.2
4	1.1	0.54	0.60	15	3.83	7.37	2.3	4.9
5	2.2	0.54	0.60	15	3.83	7.37	4.6	9.7
6	1.1	0.54	0.60	15	3.83	7.37	2.3	4.8
7	2.4	0.54	0.60	15	3.83	7.37	5.0	11
8	1.2	0.54	0.60	15	3.83	7.37	2.5	5.3
9	0.9	0.54	0.60	15	3.83	7.37	1.9	4.0
10	1.9	0.45	0.50	15	3.83	7.37	3.3	7.0
11	1.2	0.54	0.60	15	3.83	7.37	2.5	5.3
12	0.9	0.54	0.60	15	3.83	7.37	1.9	4.0
13	1.2	0.45	0.50	15	3.83	7.37	2.1	4.4
14	1.2	0.54	0.60	15	3.83	7.37	2.5	5.3
15	1.4	0.54	0.60	15	3.83	7.37	2.9	6.2

- = Basin Identifier
- = Drainage Basin Delineator
- = General Flow Direction

LEGAL DESCRIPTION: A TRACT IN THE NE 1/4 AND THE SE 1/4 OF SEC. 26, TWP. 27-S, R-2-W OF THE 6TH P.M., SEDGWICK COUNTY, KANSAS.

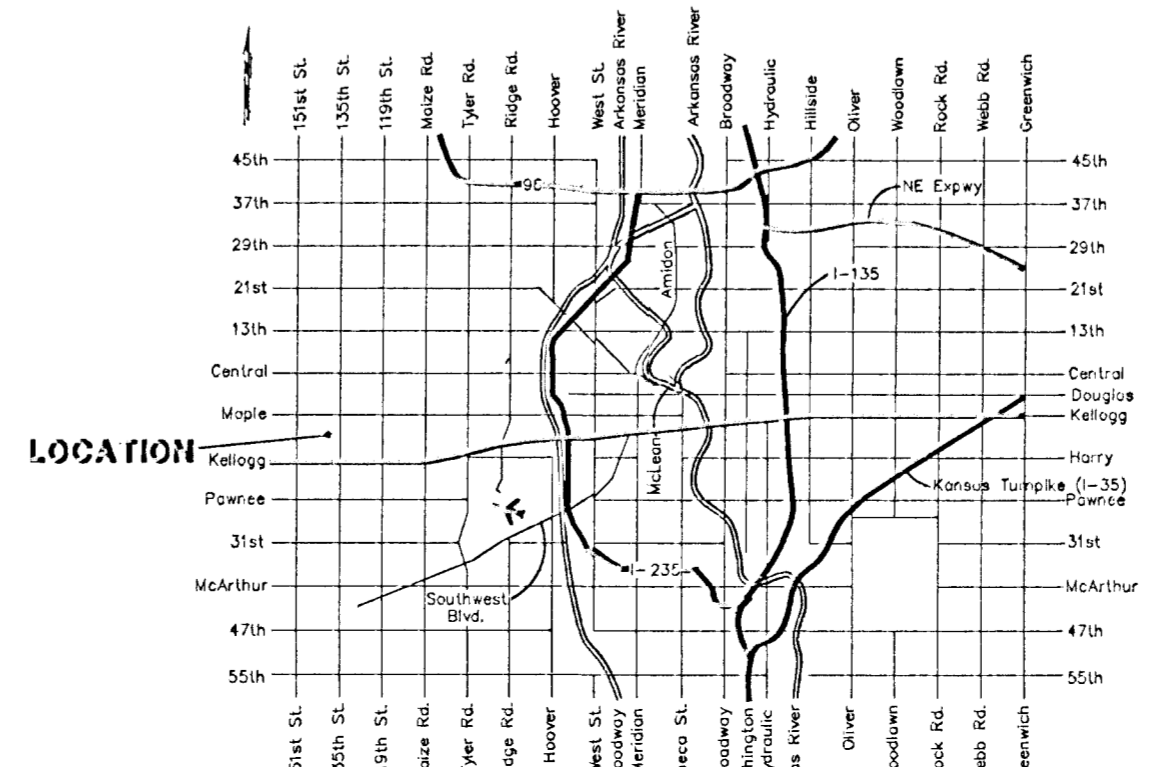
BENCHMARK:  
CITY DISC- 34.3' E. & 3.3' N. OF S.W. CORNER OF N.W. 1/4, SEC. 25, T-27-S, R-2-W ELEV=156.63  
CITY DATUM(1344.03 M.S.L.)

RESERVE "A" IS HEREBY RESERVED FOR GOLF COURSE AND GOLF COURSE RELATED PURPOSES.  
RESERVE "B" IS HEREBY RESERVED FOR STREETS, UTILITIES, LANDSCAPING, BERMS, OPEN SPACE, AND ENTRY MONUMENTS.

OWNER:  
WEST WICHITA DEVELOPMENT, INC.  
ATTN: JAY W. RUSSELL  
12802 W. 135TH  
WICHITA, KANSAS 67235  
PH (316) 644-6030

CITY OF WICHITA  
455 N. MAIN  
WICHITA, KS 67201

DELPH, NORMA J.  
1734 E. LEWIS  
WICHITA, KS 67211  
ZONED "SF-6"



(GOLF COURSE)  
CITY OF WICHITA  
455 N. MAIN  
WICHITA, KS 67201

(GOLF COURSE)  
CITY OF WICHITA  
455 N. MAIN  
WICHITA, KS 67201