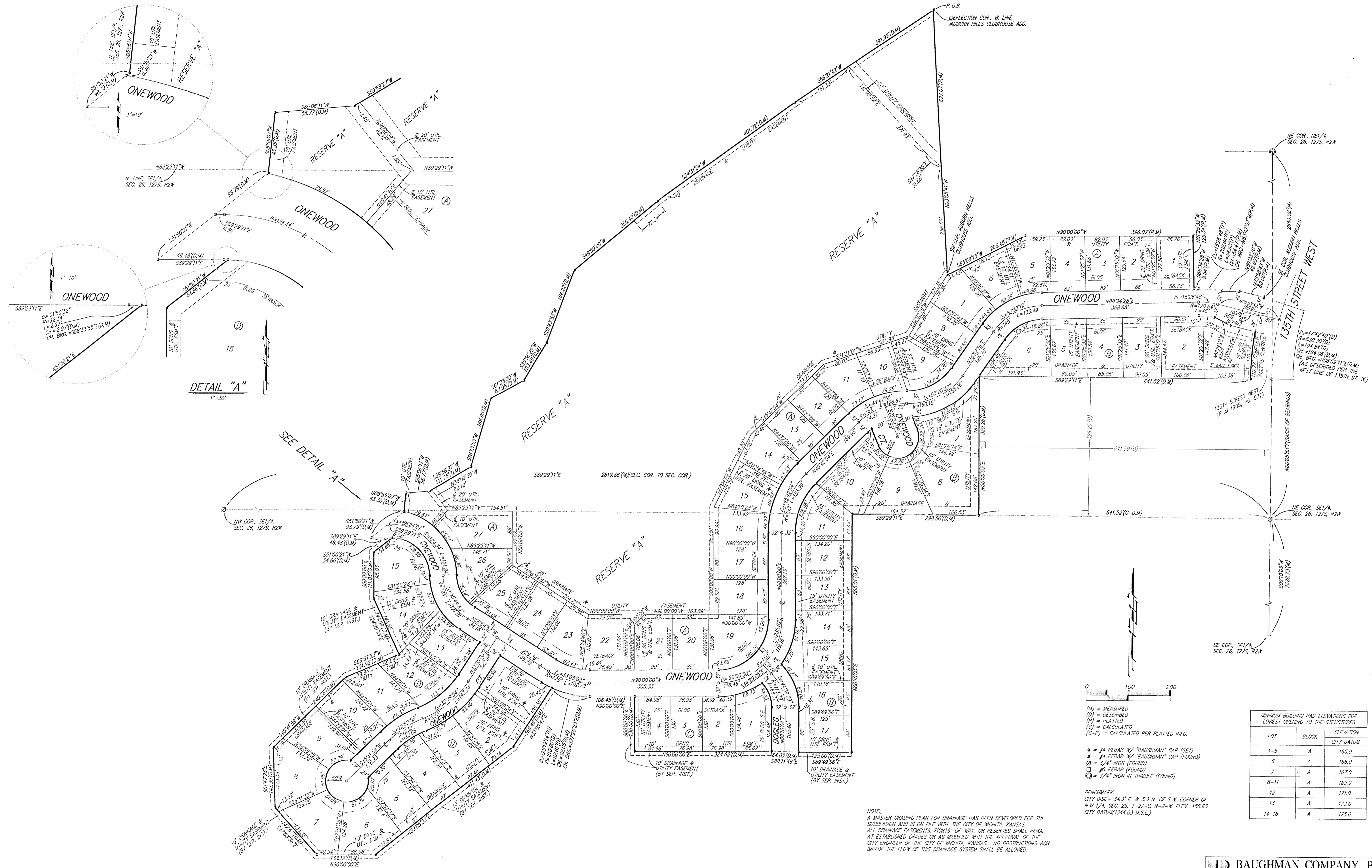


AUBURN HILLS 18TH ADDITION

WICHITA, SEDGWICK COUNTY, KANSAS



- (M) = MEASURED
 - (D) = DESCRIBED
 - (P) = PLATTED
 - (C) = CALCULATED
 - (C-P) = CALCULATED PER PLATTED INFO.
- #4 REBAR W/ "BAUGHMAN" CAP (SET)
 - #4 REBAR W/ "BAUGHMAN" CAP (FOUND)
 - #4 REBAR (FOUND)
 - #6 REBAR (FOUND)
 - ⊙ 3/4" IRON IN THIMBLE (FOUND)

MINIMUM BUILDING PAD ELEVATIONS FOR LOWEST OPENING TO THE STRUCTURES		
LOT	BLOCK	ELEVATION CITY DATUM
1-5	A	165.0
6	A	166.0
7	A	167.0
8-11	A	169.0
12	A	171.0
13	A	173.0
14-16	A	175.0

BENCHMARK:
CITY DSD- J4.3' E. & 3.3' N. OF S.W. CORNER OF N.W. 1/4, SEC. 23, T-27-S, R-2-W. ELEV.=156.63 CITY DATUM(1344.03 M.S.L.)

NOTE:
A MASTER GRADING PLAN FOR DRAINAGE HAS BEEN DEVELOPED FOR THE SUBDIVISION AND IS ON FILE WITH THE CITY OF WICHITA, KANSAS. ALL DRAINAGE EASEMENTS, RIGHTS-OF-WAY, OR RESERVES SHALL REMAIN AT ESTABLISHED GRADES OR AS MODIFIED WITH THE APPROVAL OF THE CITY ENGINEER OF THE CITY OF WICHITA, KANSAS. NO OBSTRUCTIONS WHICH IMPED THE FLOW OF THIS DRAINAGE SYSTEM SHALL BE ALLOWED.