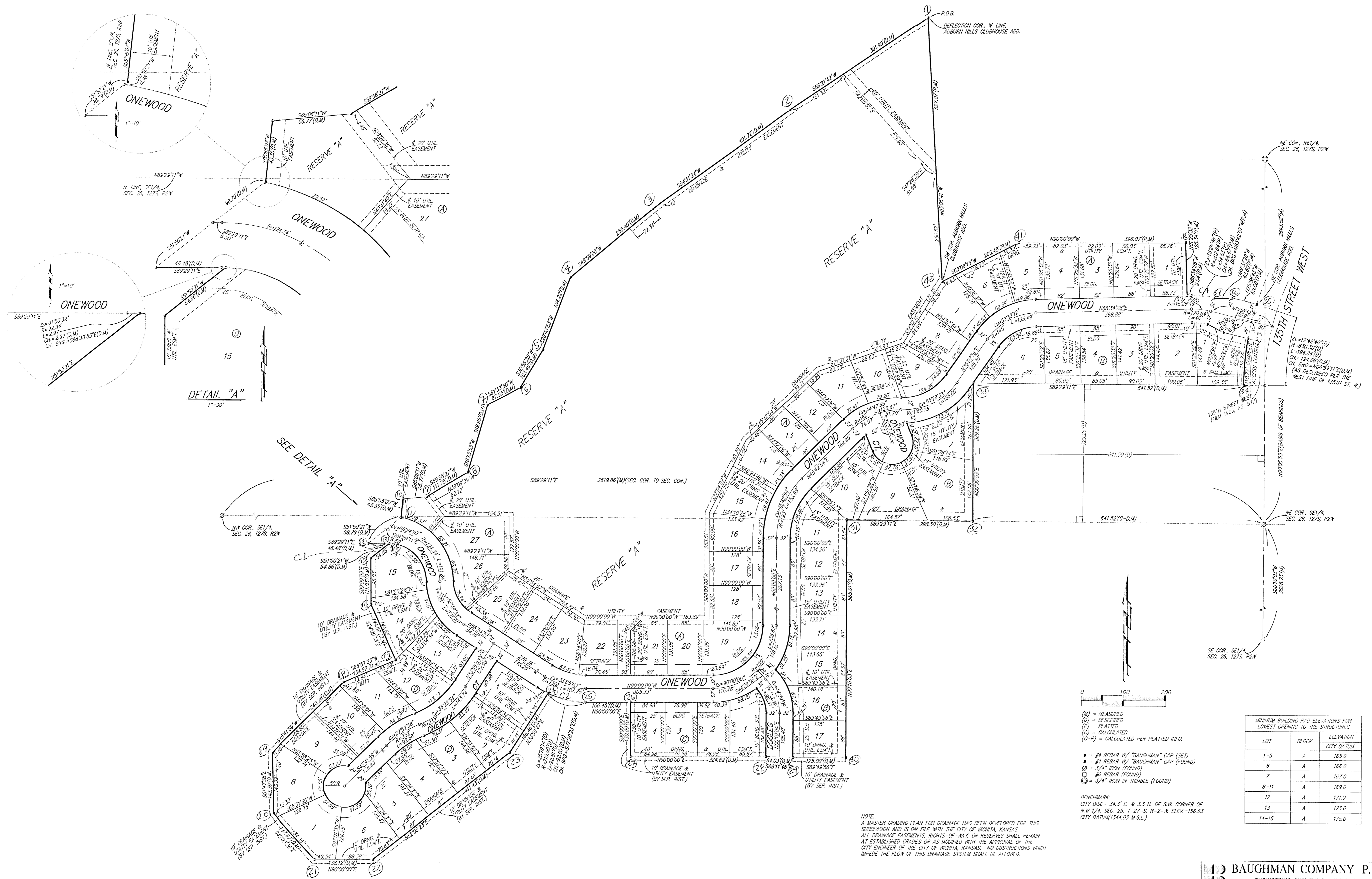


AUBURN HILLS 18TH ADDITION

WICHITA, SEDGWICK COUNTY, KANSAS



- (M) = MEASURED
 - (D) = DESCRIBED
 - (P) = PLATTED
 - (C) = CALCULATED
 - (C-P) = CALCULATED PER PLATTED INFO.
- = #1 REBAR W/ 'BAUGHMAN' CAP (SET)
 - ▲ = #4 REBAR W/ 'BAUGHMAN' CAP (FOUND)
 - = 3/4" IRON (FOUND)
 - ◇ = #6 REBAR (FOUND)
 - ⊙ = 1/4" IRON IN THIMBLE (FOUND)

LOT		BLOCK	ELEVATION
			CITY DATUM
1-5	A	165.0	
6	A	166.0	
7	A	167.0	
8-11	A	169.0	
12	A	171.0	
13	A	173.0	
14-16	A	175.0	

NOTE:
A MASTER GRADING PLAN FOR DRAINAGE HAS BEEN DEVELOPED FOR THIS SUBDIVISION AND IS ON FILE WITH THE CITY OF WICHITA, KANSAS. ALL DRAINAGE EASEMENTS, RIGHTS-OF-WAY, OR RESERVES SHALL REMAIN AT ESTABLISHED GRADES OR AS MODIFIED WITH THE APPROVAL OF THE CITY ENGINEER OF THE CITY OF WICHITA, KANSAS. NO OBSTRUCTIONS WHICH IMPED THE FLOW OF THIS DRAINAGE SYSTEM SHALL BE ALLOWED.

BAUGHMAN COMPANY P. A.
ENGINEERING, SURVEYING, & PLANNING
316-262-7271 • 315 ELLIS • WICHITA, KANSAS 67211
P:\PLAT\AUBURN HILLS 18TH ADD\AUBH18.DWG-402