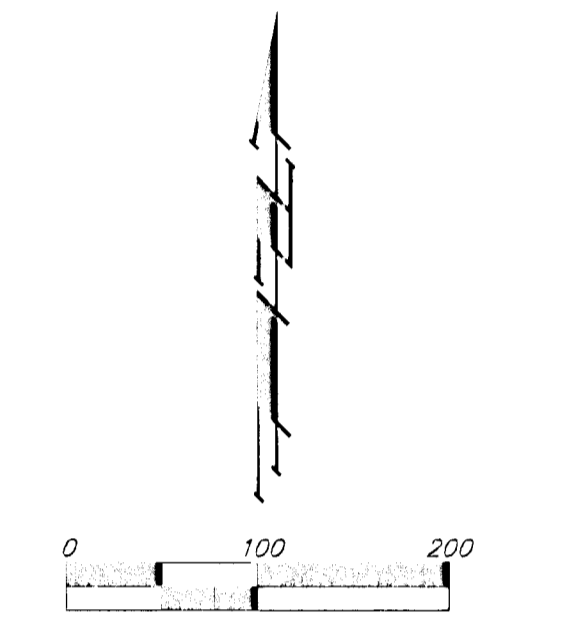
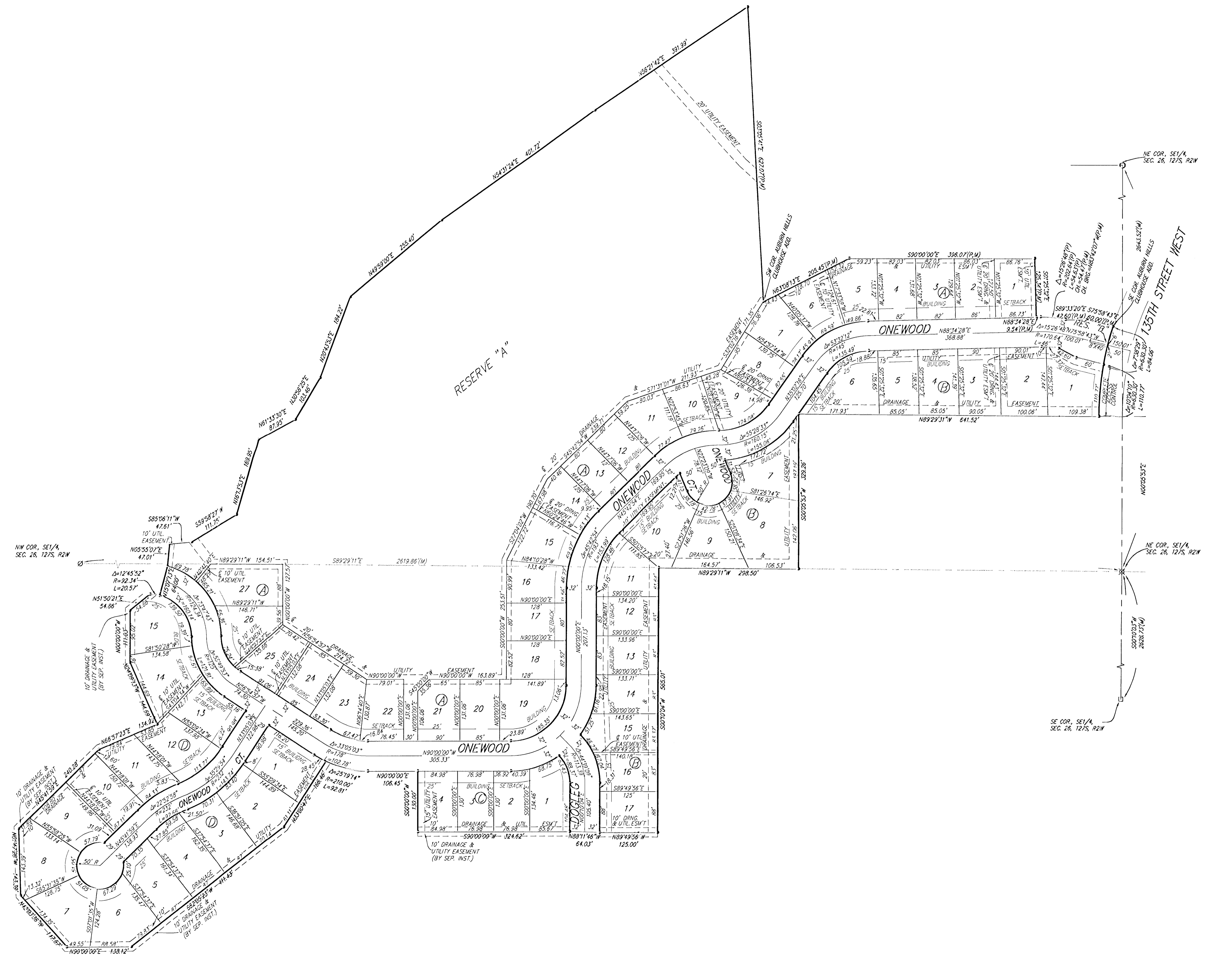


# AUBURN HILLS 13TH ADDITION

## WICHITA, SEDGWICK COUNTY, KANSAS



(M) = MEASURED  
 (D) = DESCRIBED  
 (P) = PLATTED  
 (C) = CALCULATED  
 (C-P) = CALCULATED PER PLATTED INFO.

⊖ = #4 REBAR W/ "BAUGHMAN" CAP (SET)  
 ⊙ = 3/4" IRON (FOUND)  
 ⊗ = 1" IRON (FOUND)  
 ⊠ = #5 REBAR (FOUND)  
 ⊕ = 1/2" IRON (FOUND)

BENCHMARK:  
 CITY DISC - 34.3' E. & 3.3' N. OF S.W. CORNER OF  
 N.W. 1/4, SEC. 25, T-27-S, R-2-W. ELEV. = 156.63  
 CITY DATUM (1344.03 M.S.L.)

MINIMUM BUILDING PAD ELEVATIONS FOR LOWEST OPENING TO THE STRUCTURES		
LOT	BLOCK	ELEVATION CITY DATUM
1-5	A	165.0
6	A	166.0
7	A	167.0
8-11	A	169.0
12	A	171.0
13	A	173.0
14-16	A	175.0