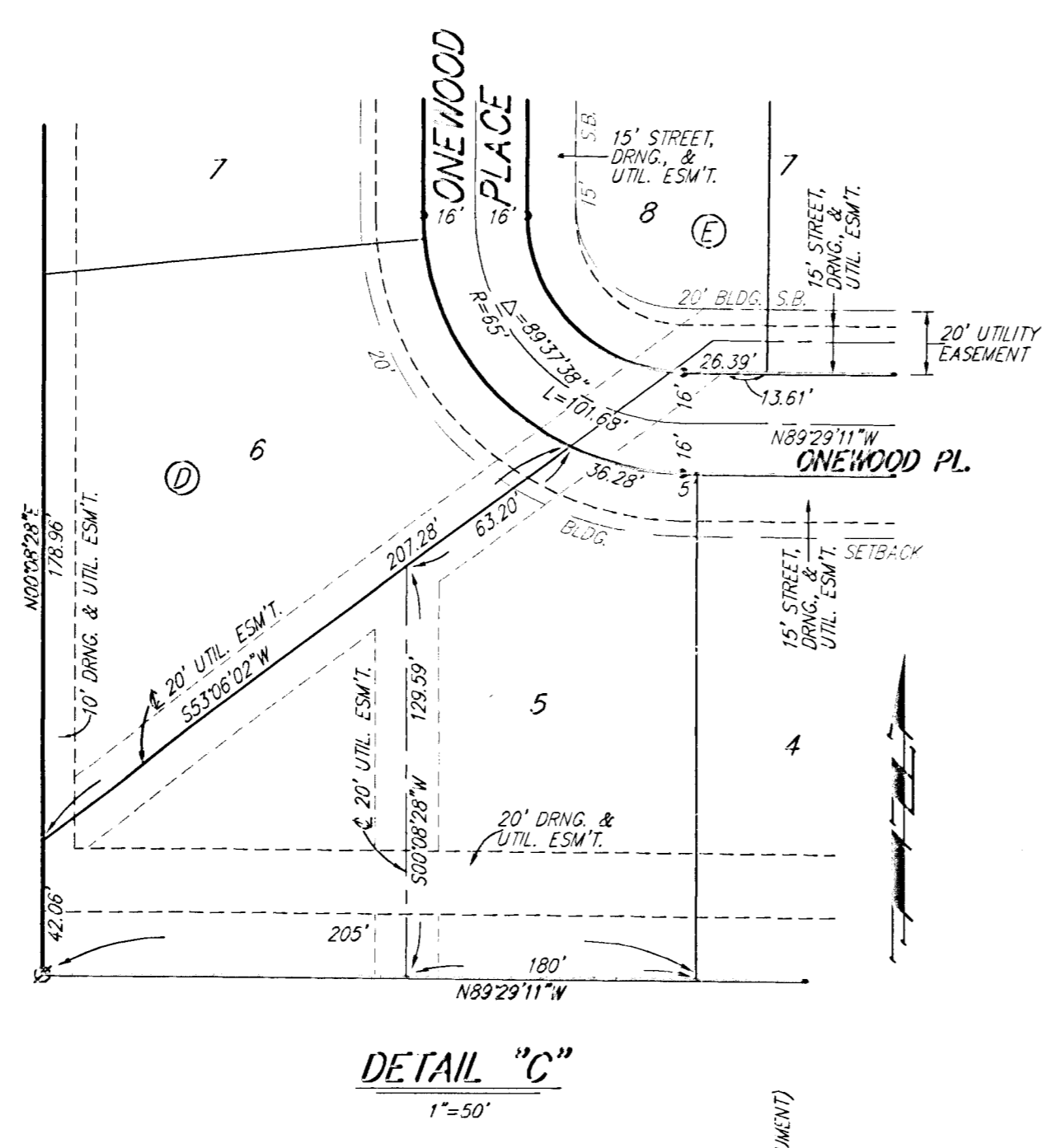
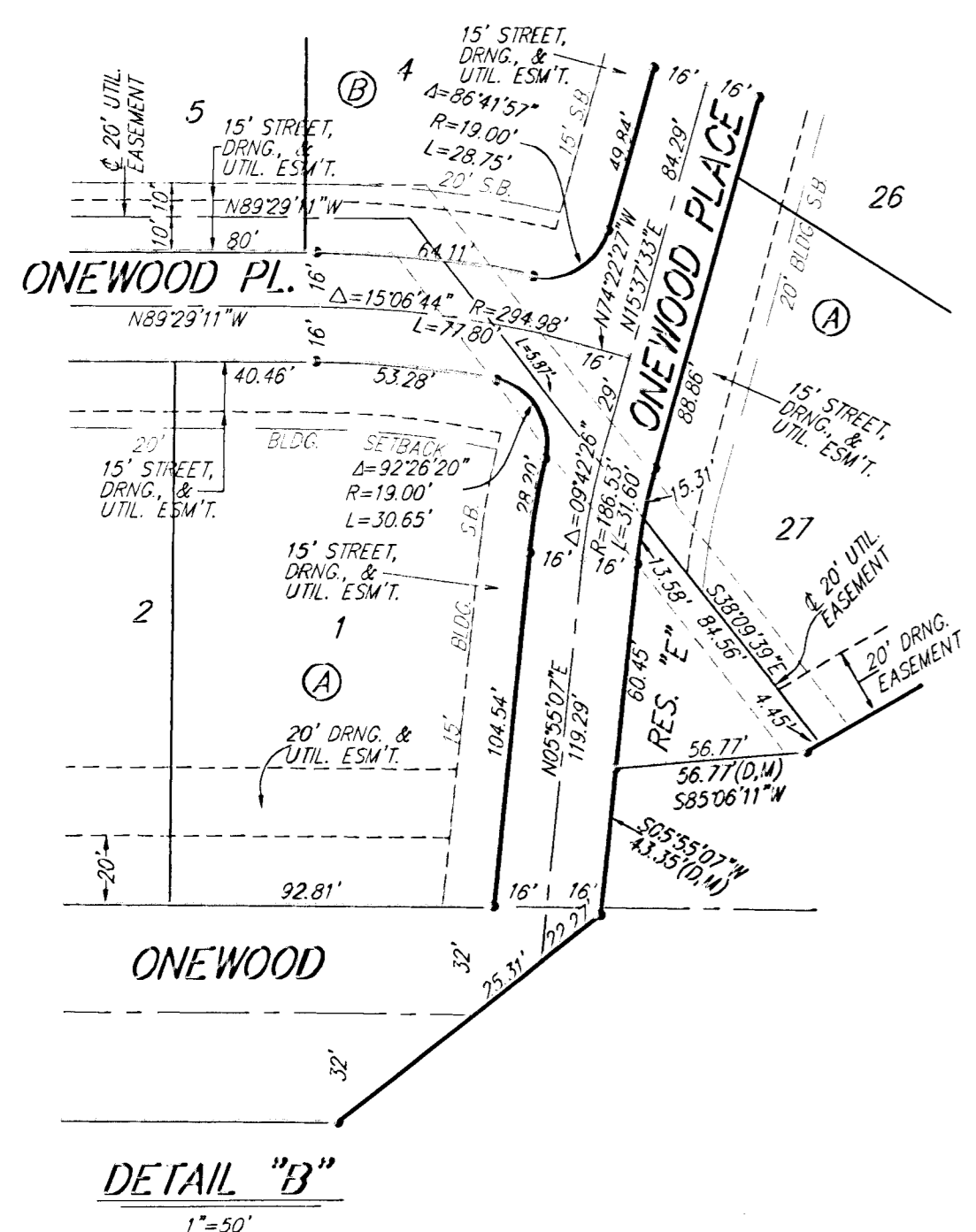


ONE-STEP FINAL
AUBURN HILLS 14TH ADDITION
 WICHITA, SEDGWICK COUNTY, KANSAS

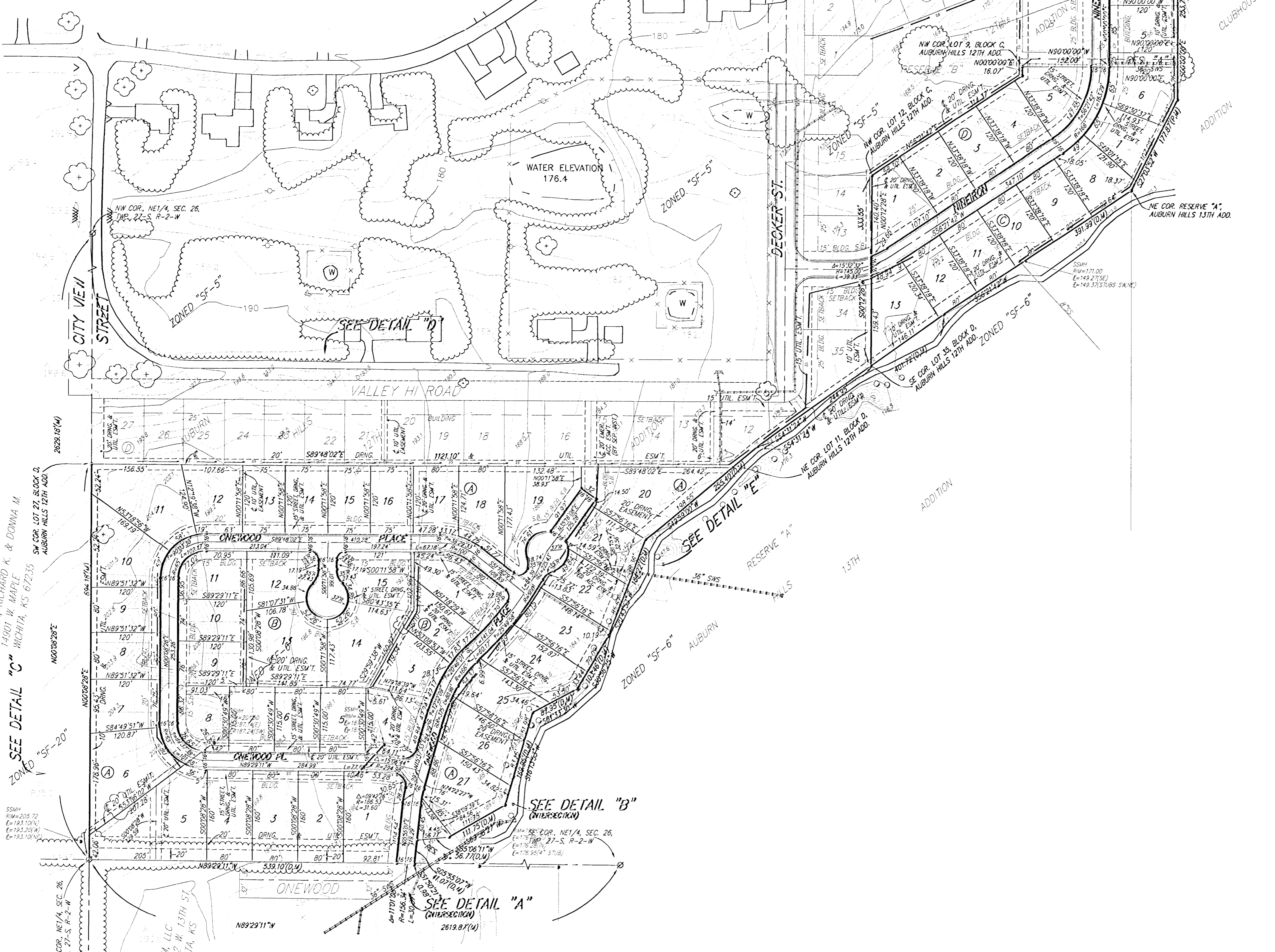
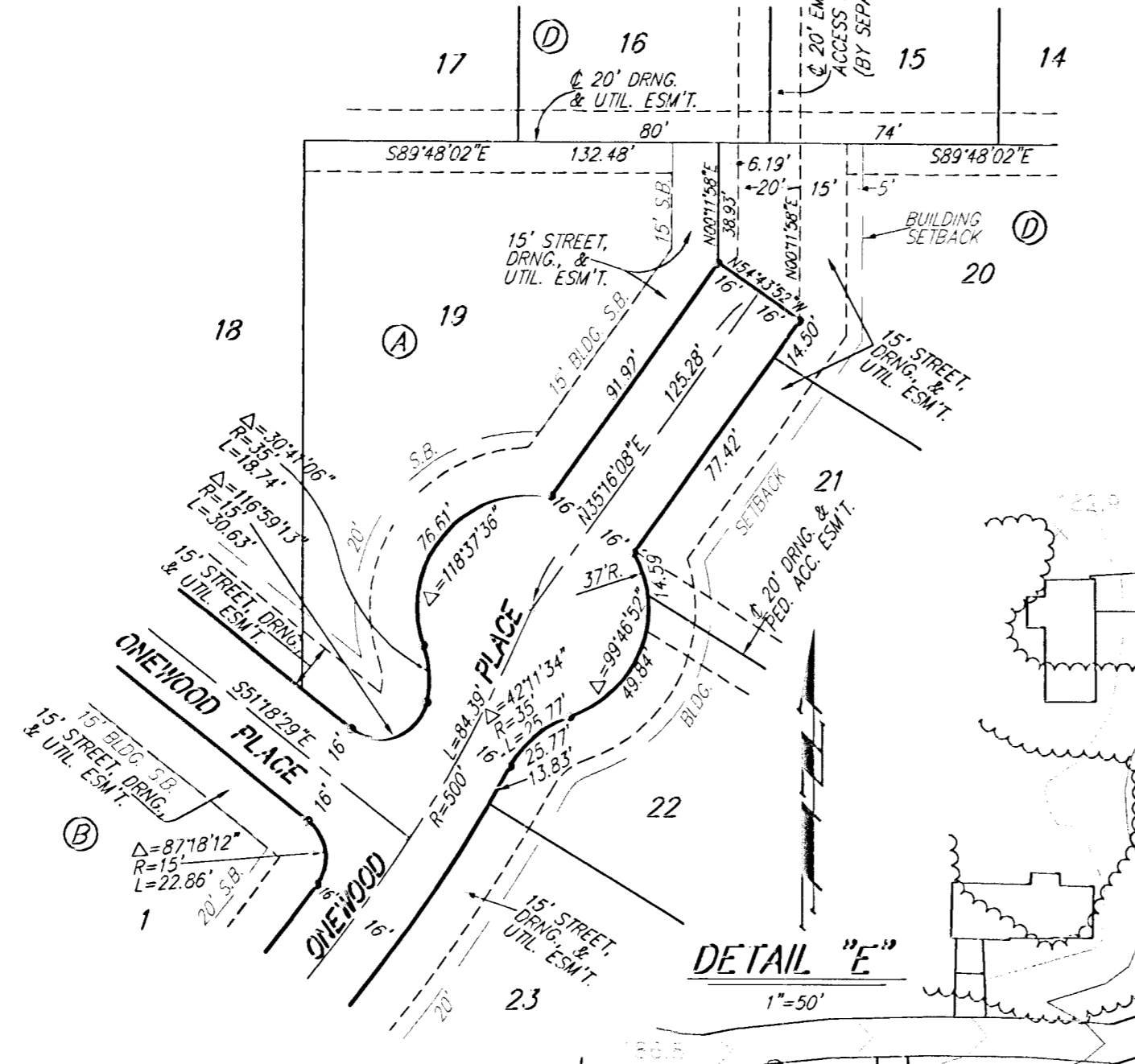
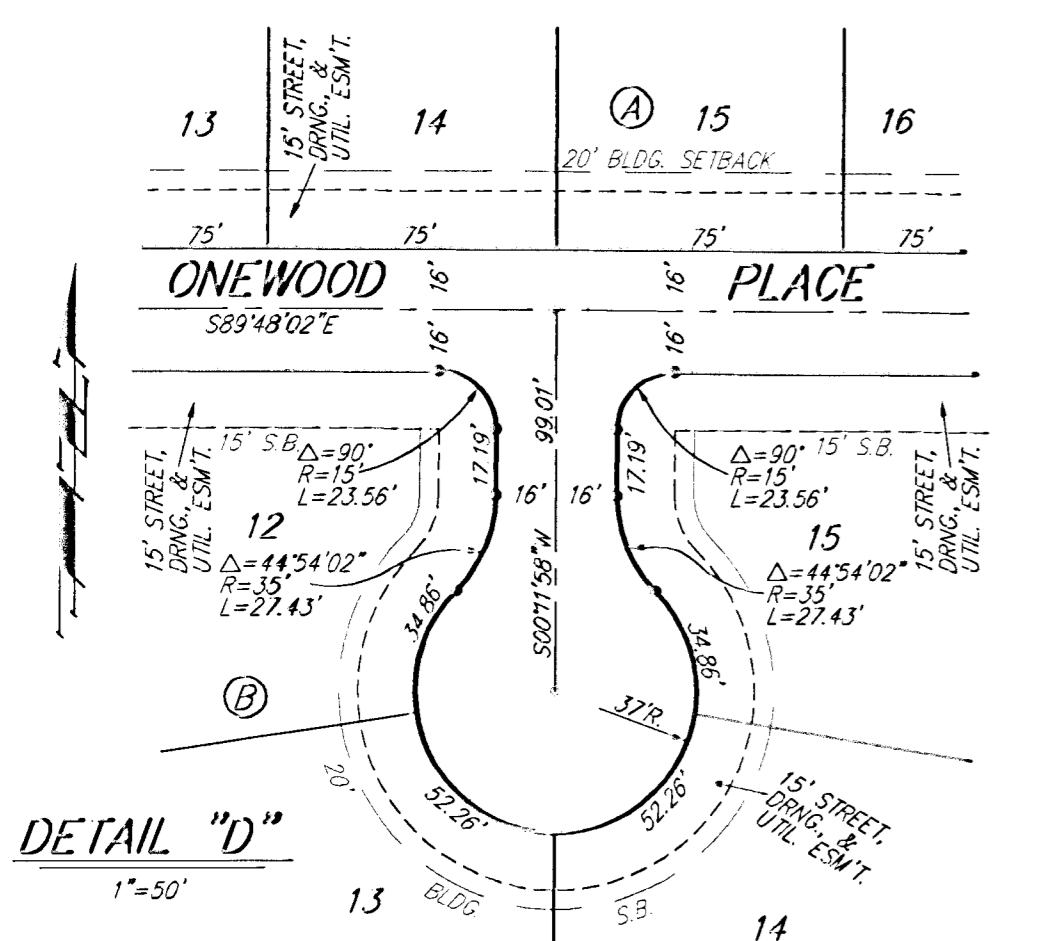
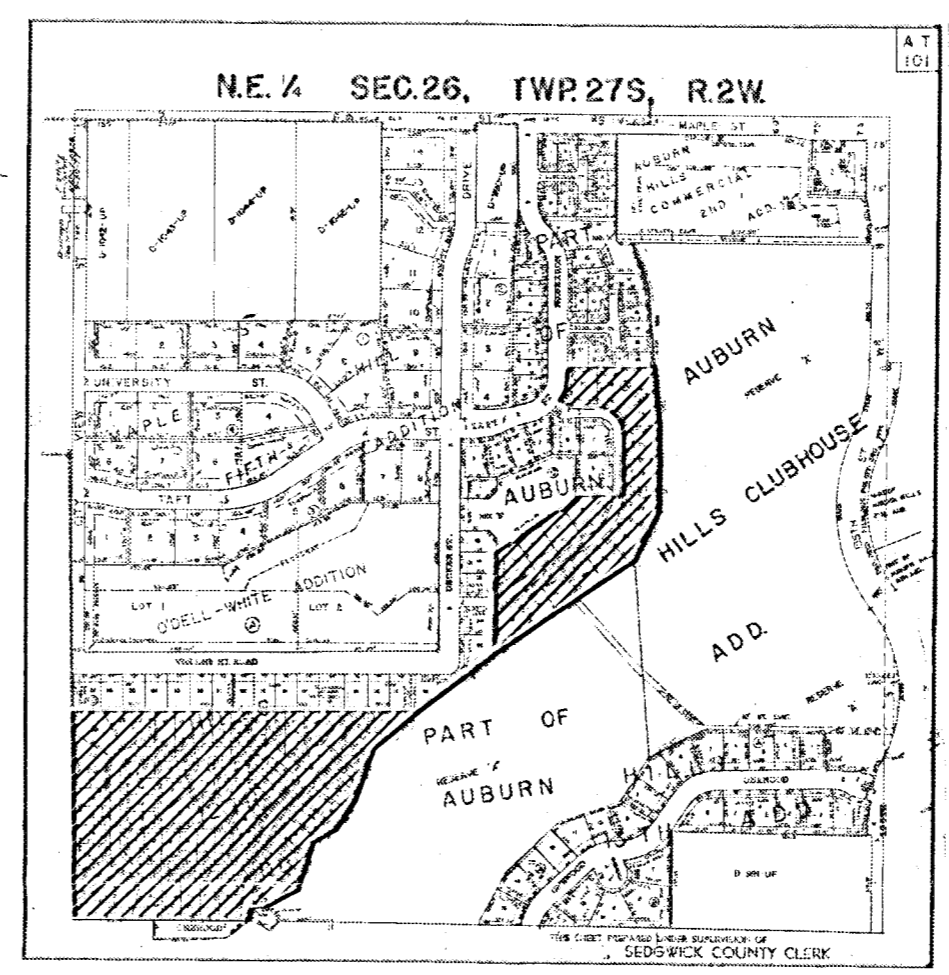


- ⊕ = #4 REBAR W/ "BAUGHMAN" CAP (SET)
 - ⊖ = 3/4" IRON (FOUND)
 - ⊙ = 3/4" IRON IN TRIMBLE (FOUND)
 - ⊖ = #5 REBAR W/ "MEC" CAP (FOUND)
 - ⊖ = UTILITY POLE
 - ⊖ = 4" TREE
 - ⊖ = SANITARY SEWER MANHOLE
- NOTE:**
 A MASTER GRADING PLAN FOR DRAINAGE HAS BEEN DEVELOPED FOR THIS SUBDIVISION AND IS ON FILE WITH THE CITY OF WICHITA, KANSAS. ALL DRAINAGE EASEMENTS, RIGHTS-OF-WAY, OR RESERVES SHALL REMAIN AT ESTABLISHED GRADES OR AS MODIFIED WITH THE APPROVAL OF THE CITY ENGINEER OF THE CITY OF WICHITA, KANSAS. NO OBSTRUCTIONS WHICH WOULD IMPERE THE FLOW OF THIS DRAINAGE SYSTEM SHALL BE ALLOWED.

DATE OF PREPARATION: MARCH 10, 2003
 DATE OF TOPOGRAPHY: DECEMBER 2001
 CONTOUR INTERVALS = 1 FOOT

BENCH MARKS:
 CITY DISC - 34.3' E. & 3.3' N. OF
 S.W. CORNER OF N.W. 1/4, SEC. 25,
 T-27-S, R-2-W
 ELEV. = 156.63 CITY DATUM
 1344.03 M.S.L.

CITY DISC - 135TH ST. W. & MAPLE,
 30' N. & 15' E. & BOTH
 ELEV. = 150.20 CITY DATUM
 1337.60 M.S.L.



SAVANA, RICHARD K. & DONNA M.
 14001 W. MAPLE
 WICHITA, KS 67235