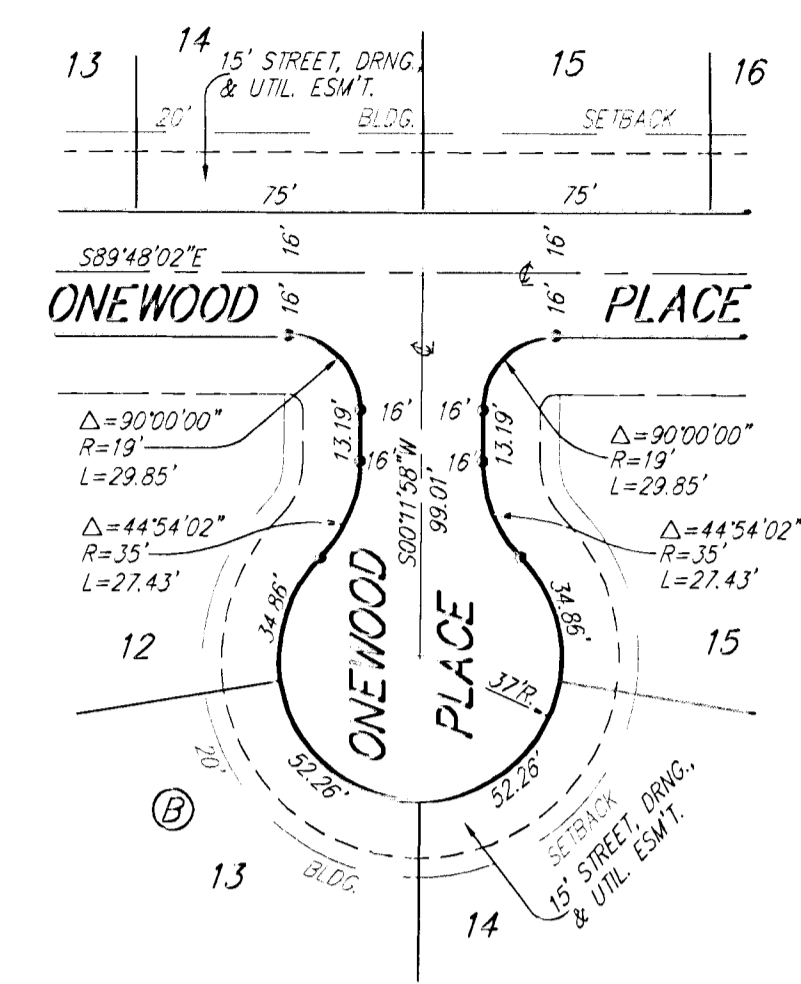
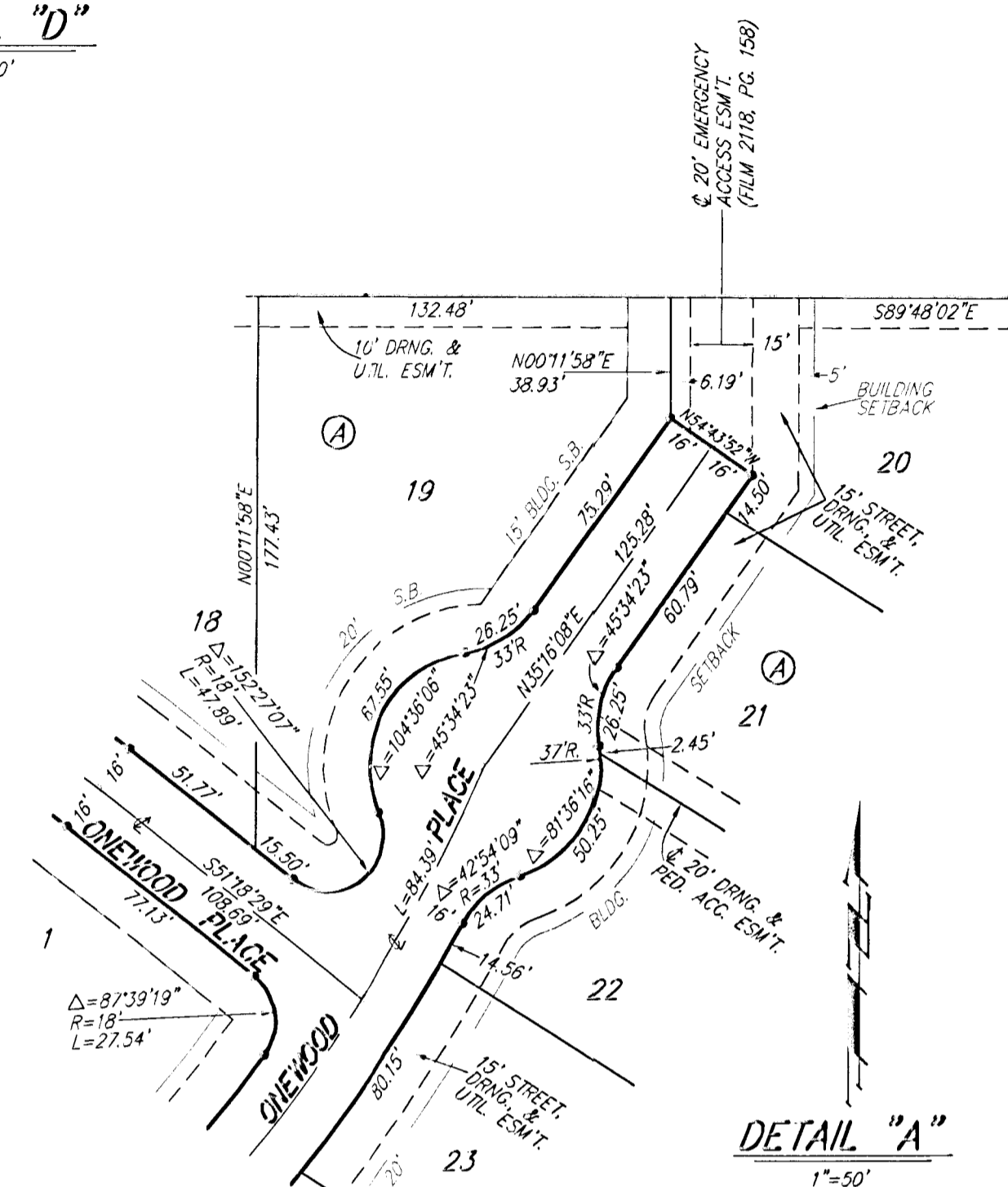


# AUBURN HILLS 14TH ADDITION

WICHITA, SEDGWICK COUNTY, KANSAS

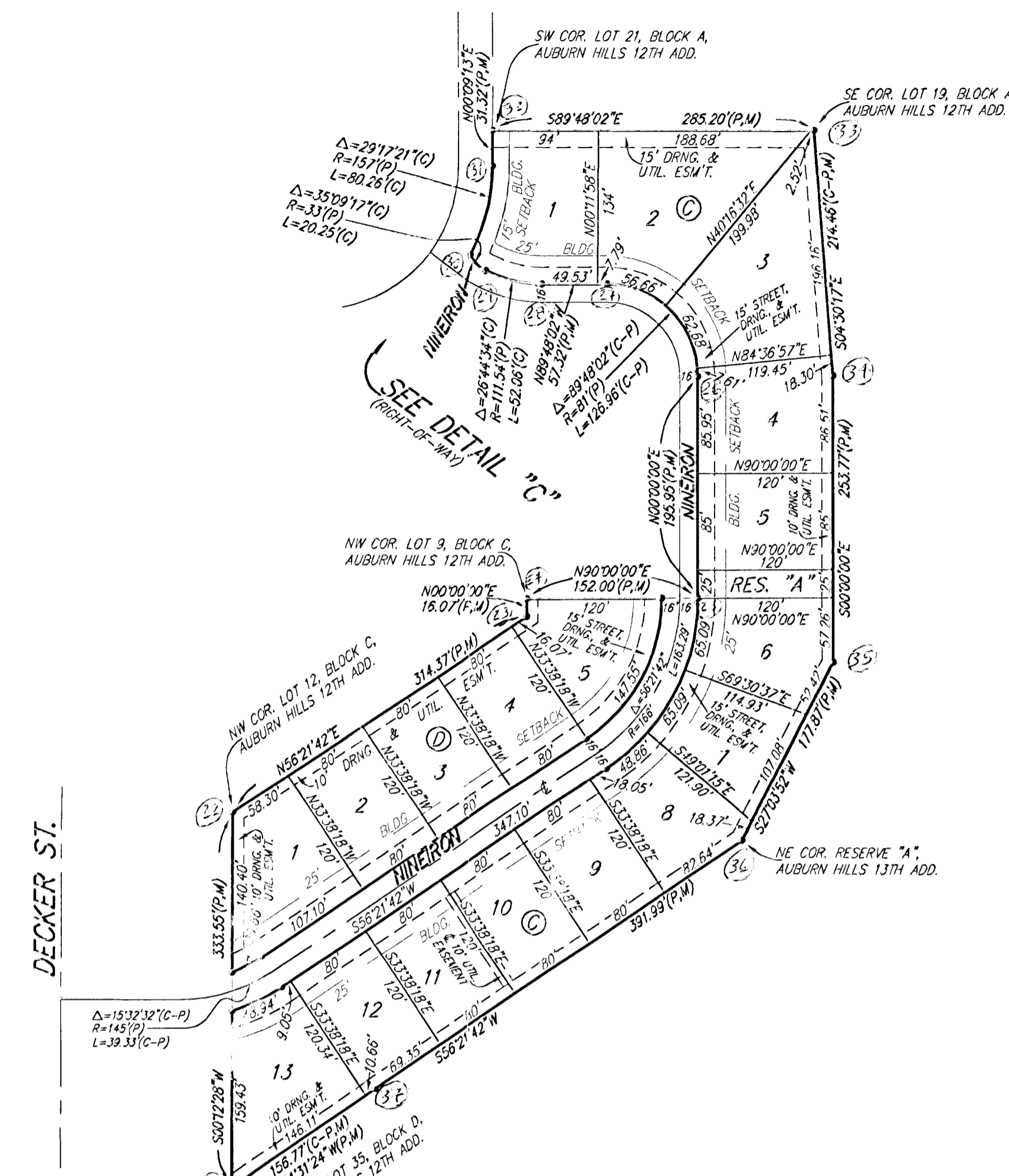


DETAIL "D"  
1"=50'



DETAIL "A"  
1"=50'

DECKER ST.



SEE DETAIL "C"

DETAIL "C"  
1"=20'



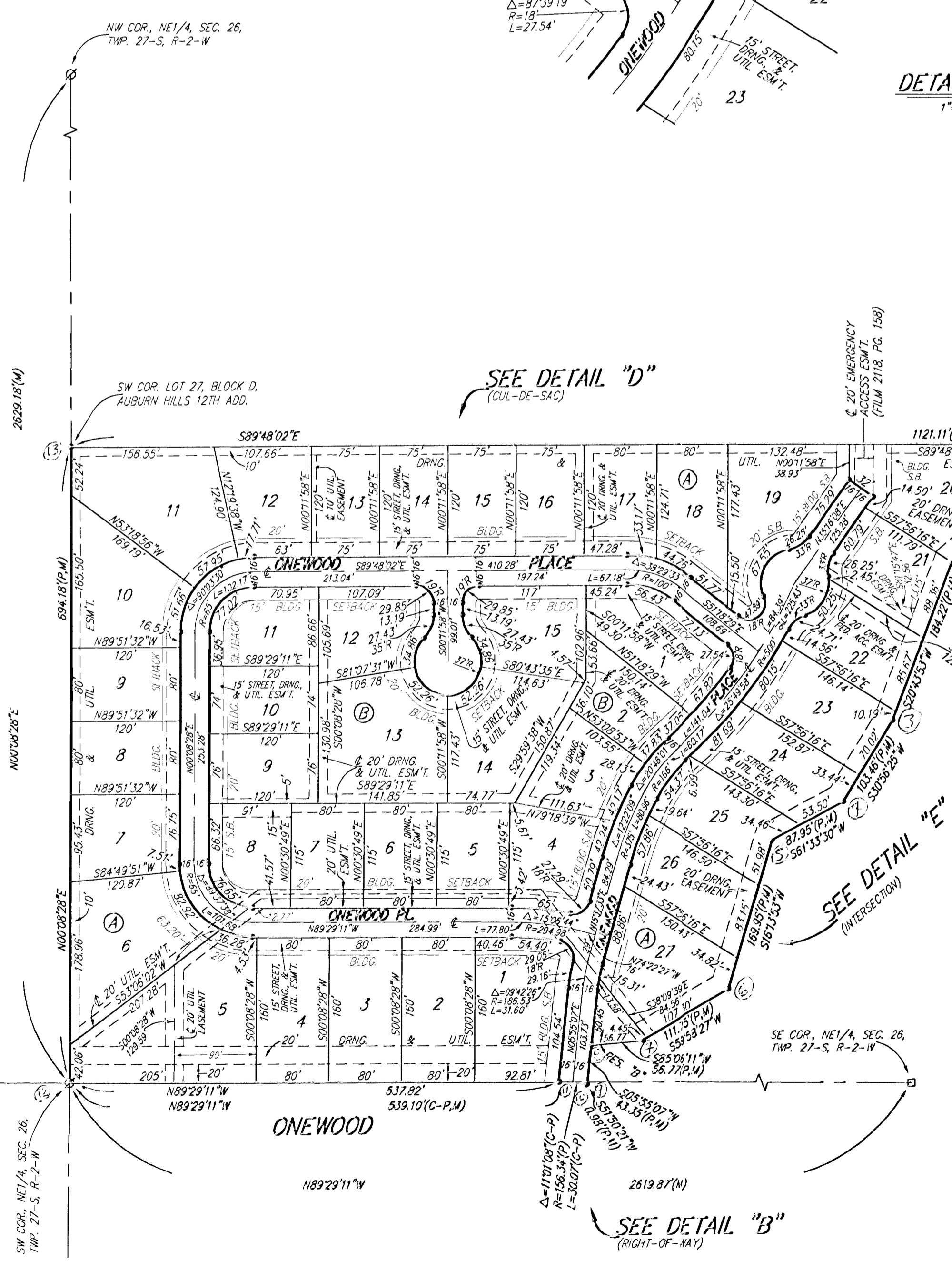
BENCHMARK:  
135TH ST. W & MCCORMICK - CITY OF WICHITA  
BENCHMARK DISC, EAST SIDE OF 135TH ST. W  
0.5 M. S. OF MAPLE  
34.00' E. OF C. OF 135TH ST. W  
11.00' N. OF C. OF BRIDGE E-W  
2.00' N. OF 1/4 COR.  
1.00' W. OF FENCE SOUTH  
ELEV. = 156.66 CITY DATUM

135TH ST. W & MAPLE - CITY OF WICHITA  
BENCHMARK DISC, NE CORNER OF INTERSECTION  
ON HEADWALL  
34.00' SW 1/4 SECTION COR. IRON  
ELEV. = 150.29 CITY DATUM

- = #4 REBAR W/ "BAUGHMAN" CAP (SET)
- = 3/4" IRON (FOUND)
- = #6 REBAR (FOUND)
- (M) = MEASURED
- (P) = PLATED
- (C) = CALCULATED
- (C-P) = CALCULATED PER PLATED INFO.

NOTE:  
A MASTER GRADING PLAN FOR DRAINAGE HAS BEEN DEVELOPED FOR THIS SUBDIVISION AND IS ON FILE WITH THE CITY OF WICHITA, KANSAS. ALL DRAINAGE EASEMENTS, RIGHTS-OF-WAY, OR RESERVES SHALL REMAIN AT ESTABLISHED GRADES OR AS MODIFIED WITH THE APPROVAL OF THE CITY ENGINEER OF THE CITY OF WICHITA, KANSAS. NO OBSTRUCTIONS WHICH IMPEDS THE FLOW OF THIS DRAINAGE SYSTEM SHALL BE ALLOWED.

MINIMUM BUILDING PAD ELEVATIONS FOR LOWEST OPENING TO THE STRUCTURES		ELEVATION CITY DATUM
LOT	BLOCK	
1-5	D	172.8

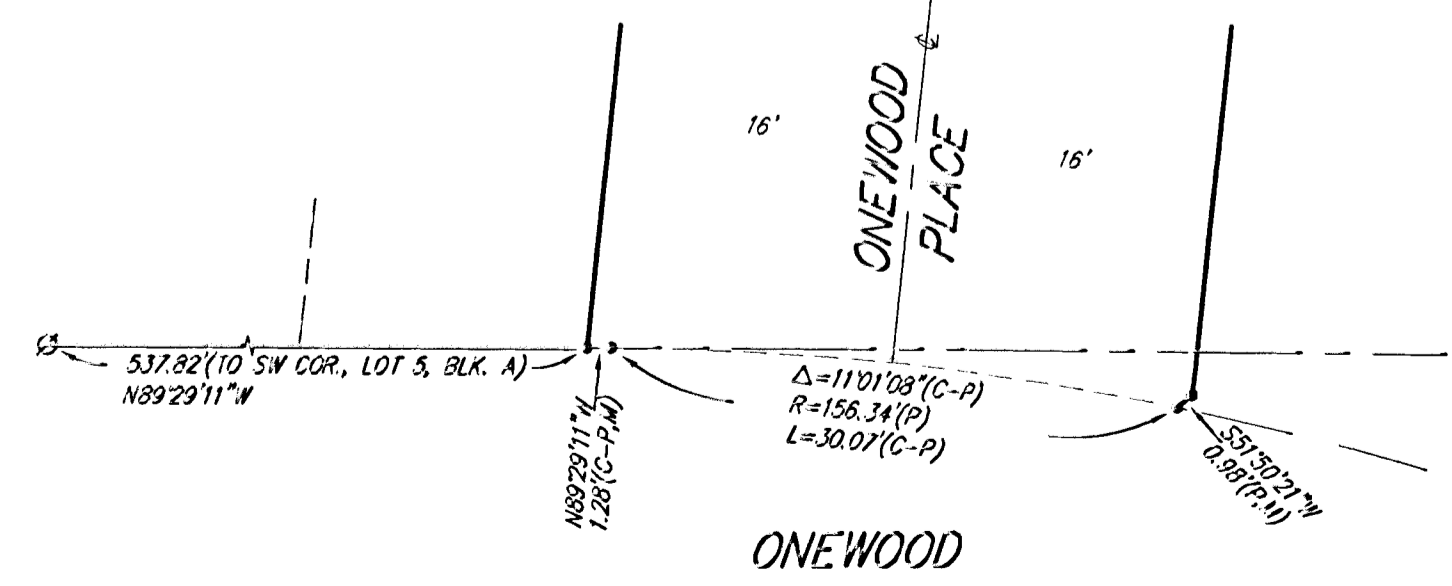


SEE DETAIL "D" (CUL-DE-SAC)

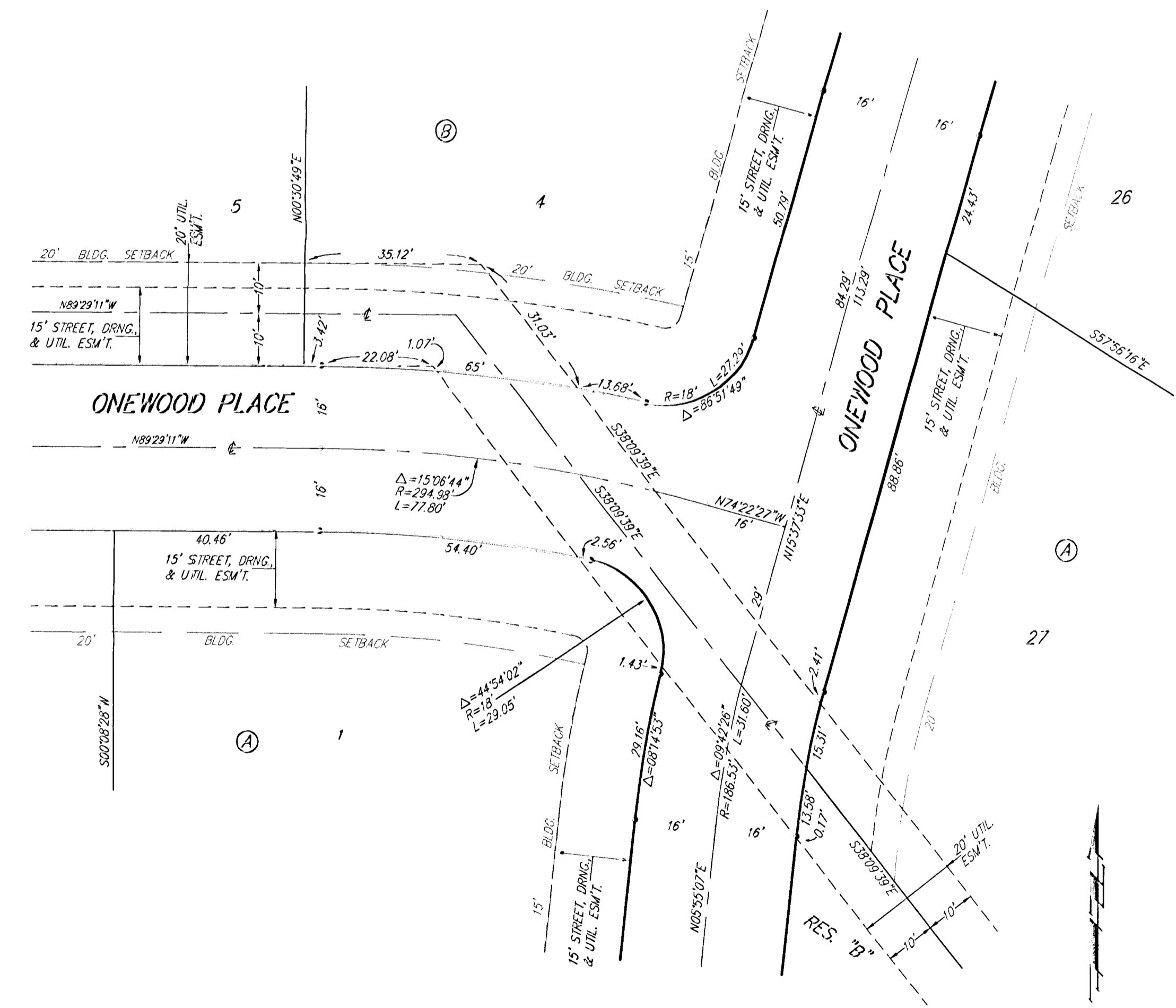
SEE DETAIL "A" (CUL-DE-SAC)

SEE DETAIL "E" (INTERSECTION)

SEE DETAIL "B" (RIGHT-OF-WAY)



DETAIL "B"  
1"=10'



DETAIL "E"  
1"=20'