

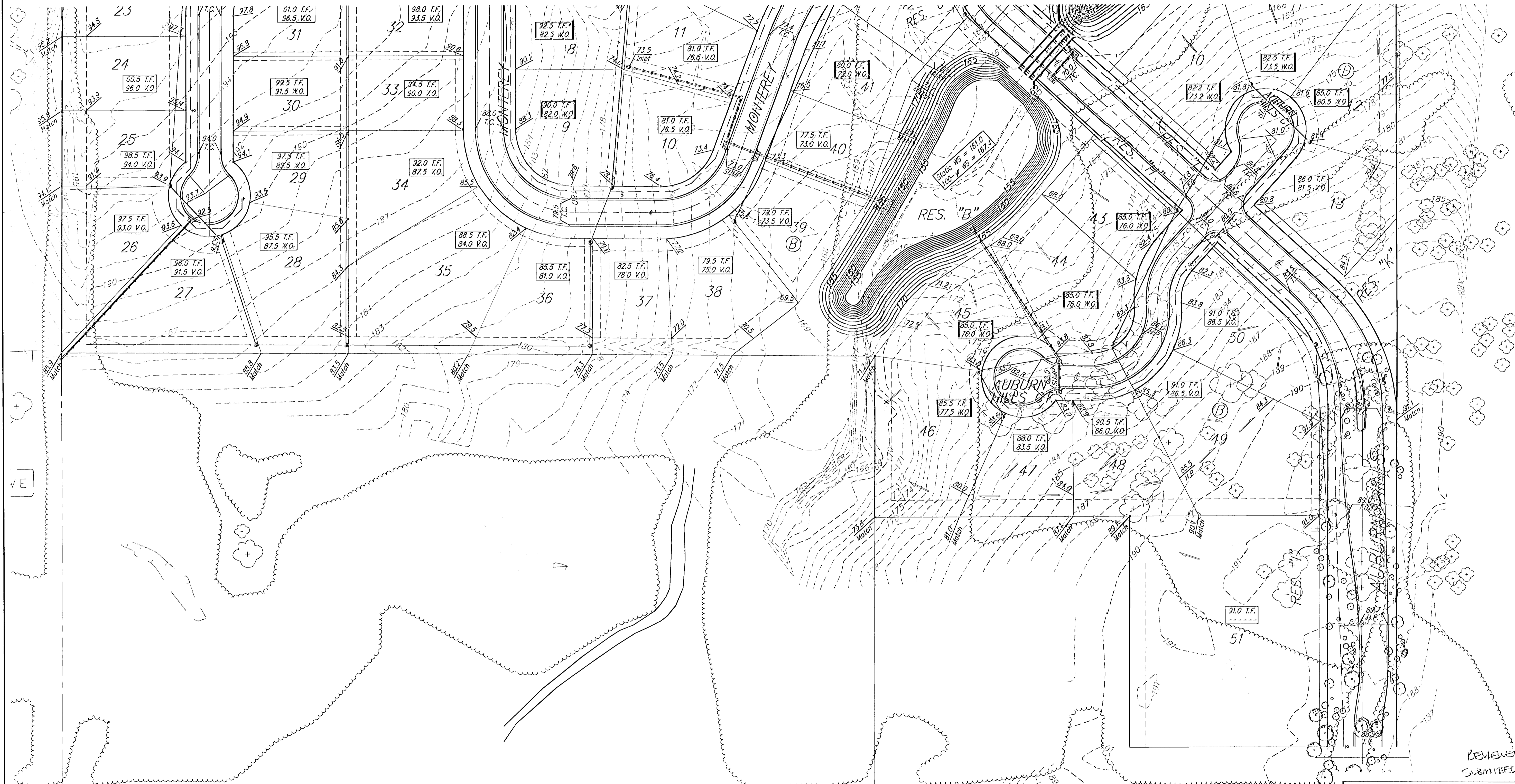
BENCHMARKS:
 City Disc in T.C. Adj. to F.H. 38'
 South of intersection of Onewood
 and Auburn Hills.
 Elev. = 178.48 (City Datum)

"□" cut in south curb of Onewood
 272' west of C.L. Auburn Hills.
 Elev. = 179.73 (City Datum)

SEE SHEET 2 FOR NOTES AND TYPICALS

Existing Grade

Scale: 1" = 60'



REVIEWED 12/21/05
 SUBMITTED 11/2/05

11/2/05 - Ph. 2 Westar Asbuilt - AEG
 REV. 10/28/05 - Ph. 2 Final Grades - AEG
 REV. 10/14/05 - Ph. 2 Final Grades - AEG
 REV. 7-18-05 - Rear Yard Grades - Lot 4, Blk. D - AEG
 REV. 10-20-2004 - Lots 3 & 4, Blk. D - NLS

AUBURN HILLS 15TH ADDITION
GRADING PLAN
 WICHITA, KANSAS

B BAUGHMAN COMPANY P.A.
 ENGINEERING, SURVEYING, & PLANNING

316-262-7271 • 315 ELLIS • WICHITA, KANSAS 67211

DESIGN N/W	DRAWN A/TD	APPROVED	DATE 06/04
PROJECT NUMBER			SHEET 1 OF 3
			SCALE Noted

AHI15th/1505