

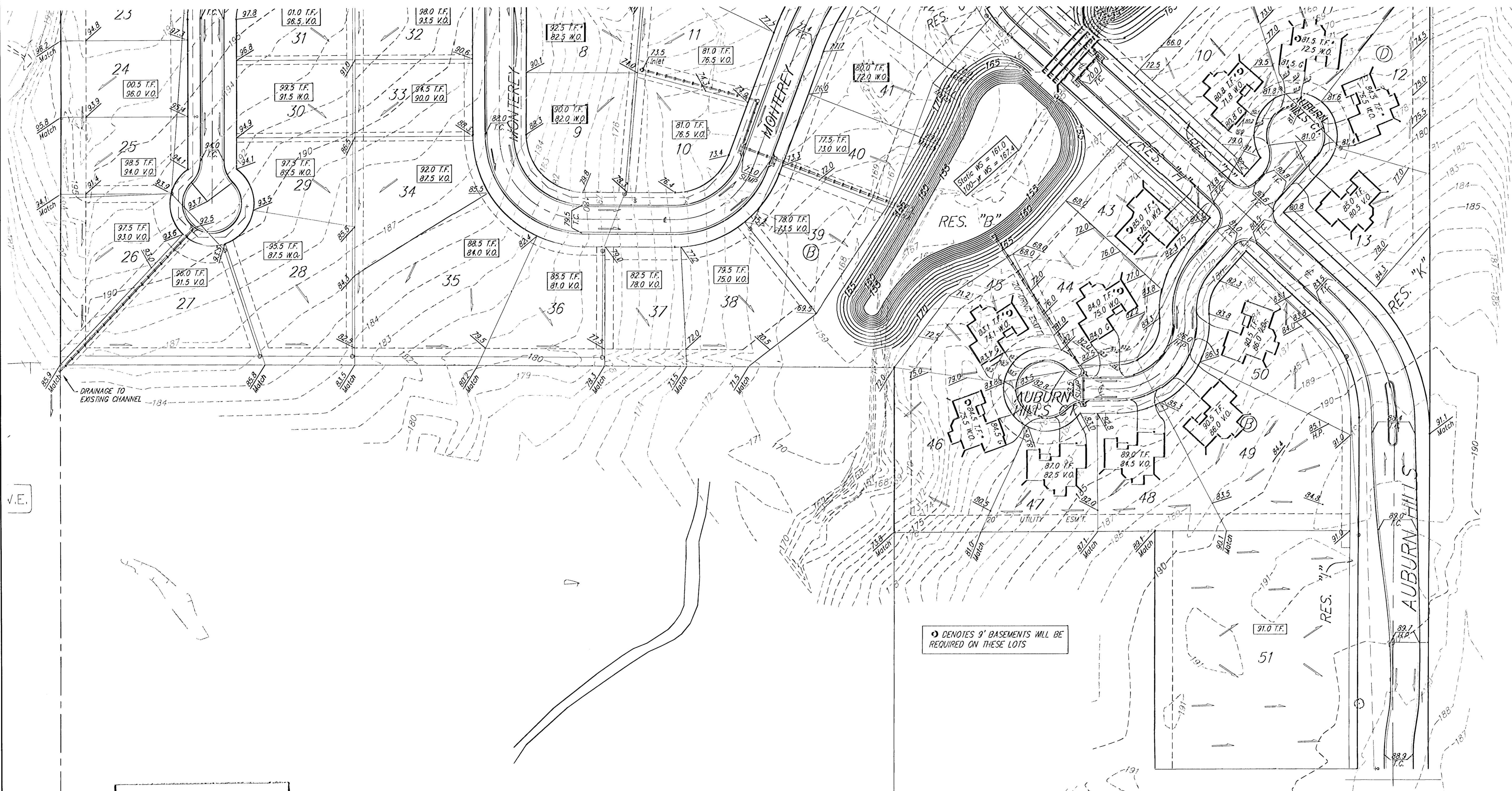
BENCHMARKS:  
 City Disc in T.C. Adj. to F.H. 38'  
 South of intersection of Onewood  
 and Auburn Hills.  
 Elev. = 178.48 (City Datum)

"□" cut in south curb of Onewood  
 272' west of C.L. Auburn Hills.  
 Elev. = 179.75 (City Datum)

SEE SHEET 2 FOR NOTES AND TYPICALS

Existing Grade

Scale: 1" = 60'



V.E.

○ DENOTES 9' BASEMENTS WILL BE REQUIRED ON THESE LOTS

REV. 01/09/06 - Lots 43-50, B & 10-13, D - JEB, per NBW  
 REV. 12/16/05 - Lots 46-50, B & 12-13, D - AEG  
 REV. 11/27/05 - Ph. 2 Westar Assuit - AEG  
 REV. 10/28/05 - Ph. 2 Final Grades - AEG  
 REV. 10/14/05 - Ph. 2 Final Grades - AEG  
 REV. 7-18-05 - Rear Yard Grades - Lot 4, Blk D - AEG  
 REV. 10-20-2004 - Lots 3 & 4, Blk D - NLS

**APPROVED  
 DRAINAGE PLAN**  
 11/21/06

**AUBURN HILLS 15TH ADDITION  
 GRADING PLAN**  
 WICHITA, KANSAS

**BAUGHMAN COMPANY P.A.**  
 ENGINEERING, SURVEYING, & PLANNING  
 318-282-7271 • 315 ELLIS • WICHITA, KANSAS 67211

PROJECT NUMBER

DESIGN NBW	DRAWN ATD	APPROVED	DATE 06/04	SCALE Noted
---------------	--------------	----------	---------------	----------------

SHEET 1 OF 2

4/15/06/MS

**BENCHMARKS:**  
 City Disc in T.C. Adj. to F.H. 38'  
 South of intersection of Onewood  
 and Auburn Hills.  
 Elev. = 178.48 (City Datum)

"□" cut in south curb of Onewood  
 272' west of C.L. Auburn Hills.  
 Elev. = 179.73 (City Datum)

**NOTES:**

1. PROPOSED TOP OF FOUNDATION ELEVATIONS ARE SHOWN ON PLANS. CONTRACTOR TO SET FINISHED FLOOR AND GARAGE FLOOR ELEVATIONS. ALL STREET ELEVATIONS SHOWN ON PLANS ARE FOR TOP OF CURB (FULL-HEIGHT).

2. THIS GRADING PLAN IS DESIGNED WITH VIEW-OUTS AND WALK-OUTS. ELEVATIONS SHOWN AS XX.X V.O. DEPICT VIEW-OUT STRUCTURES. ELEVATIONS SHOWN AS XX.X W.O. DEPICT WALK-OUT STRUCTURES.

3. ALL LOTS SHALL MEET MINIMUM PAD REQUIREMENT AS SHOWN ON THE RECORDED PLAT.

MINIMUM BUILDING PAD ELEVATIONS FOR LOWEST OPENING TO THE STRUCTURES

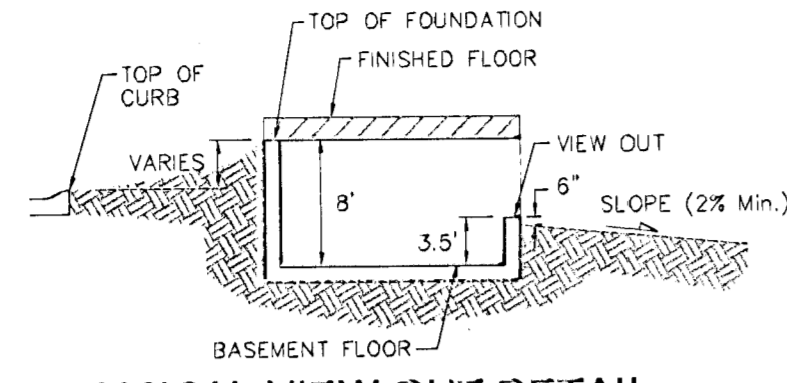
LOT	BLOCK	ELEVATION
		CITY DATUM
38-46	B	172.0
6-12	D	172.0

4. LOT DIMENSIONS HAVE BEEN OMITTED ON THIS PLAN. REFER TO THE RECORDED PLAT FOR FINAL DIMENSION, EASEMENT, & BUILDING SETBACK INFORMATION.

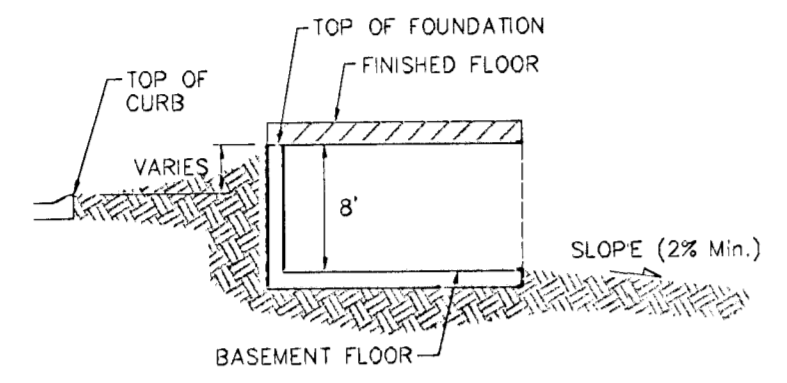
5. HOUSE PAD ELEVATIONS DEPICTED WITH BOLD OUTLINES WITH TOP OF FOUNDATIONS SHOWN AS XX.X T.F.\* INDICATE THAT DEEP FOOTINGS OR DEEP FOUNDATIONS ARE REQUIRED.

6. A DRAINAGE PLAN HAS BEEN DEVELOPED FOR THIS SUBDIVISION AND IS ON FILE WITH THE CITY OF WICHITA, KANSAS. DRAINAGE INTENT SHALL REMAIN AS DEPICTED OR AS MODIFIED WITH THE APPROVAL OF THE CITY ENGINEER OF THE CITY OF WICHITA, KANSAS. NO OBSTRUCTIONS WHICH IMPEDE THE FLOW OF THIS DRAINAGE PLAN SHALL BE ALLOWED.

8. ALL ELEVATIONS SHOWN ON PLANS ARE CITY OF WICHITA DATUM.

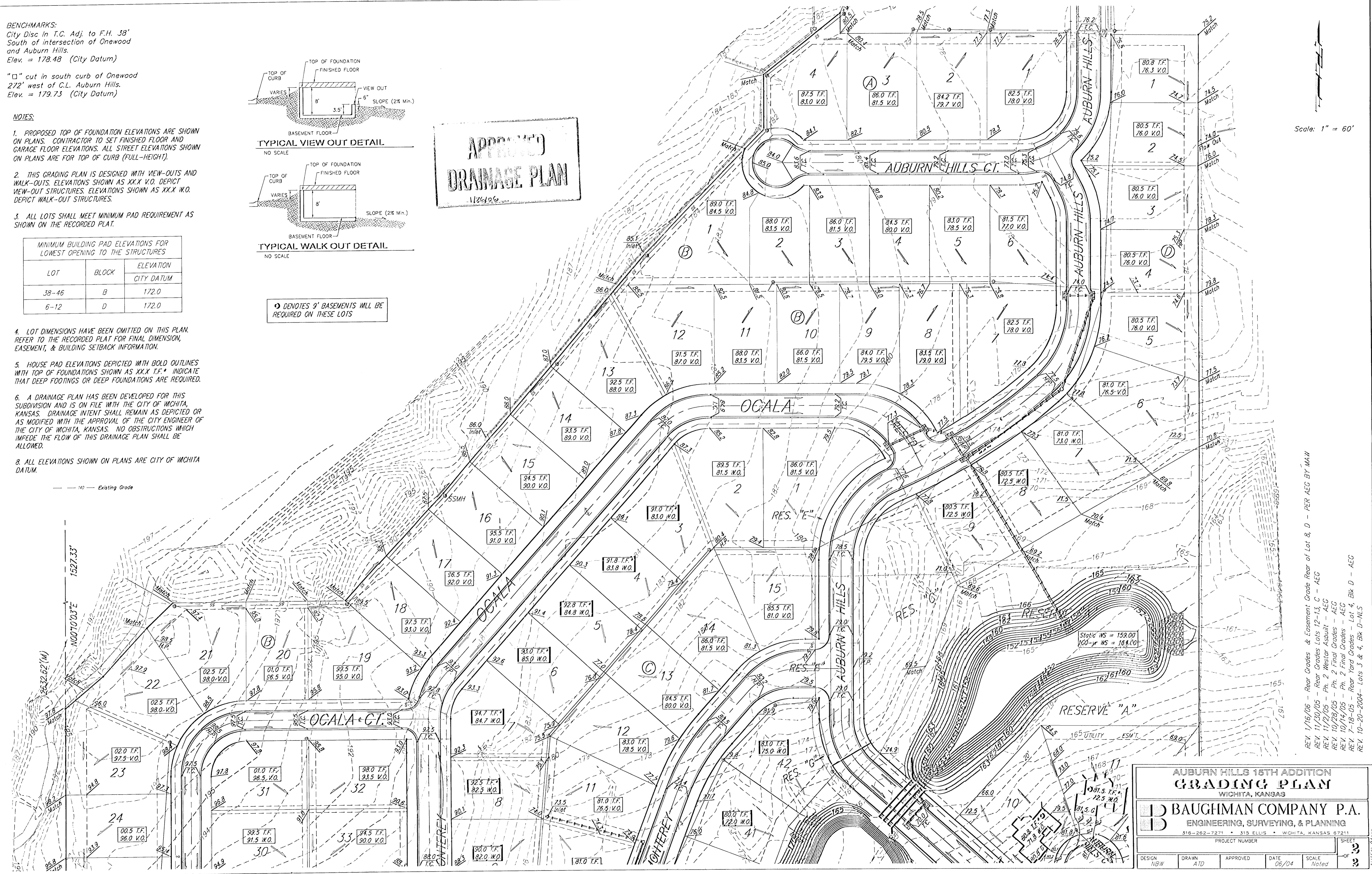
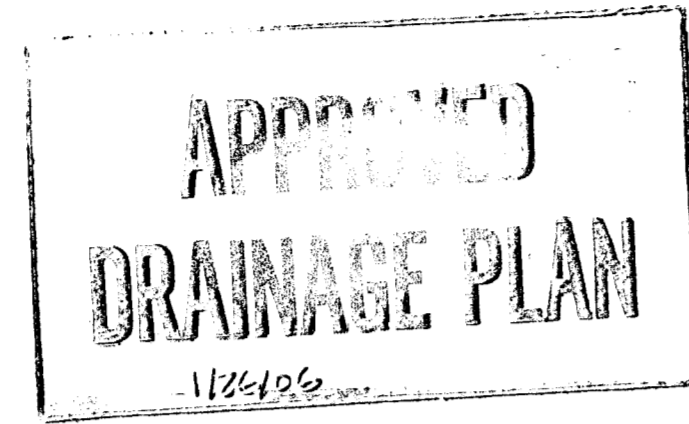


TYPICAL VIEW OUT DETAIL  
NO SCALE



TYPICAL WALK OUT DETAIL  
NO SCALE

ⓐ DENOTES 9' BASEMENTS WILL BE REQUIRED ON THESE LOTS



Scale: 1" = 60'

REV. 1/16/06 - Rear Grades & Easement Grade Rear of Lot 8, D - PER AEC BY MAW  
 REV. 11/20/05 - Rear Grades Lots 12-13, C - AEC  
 REV. 11/20/05 - Ph. 2 Westar Asphalt - AEG  
 REV. 10/29/05 - Ph. 2 Final Grades - AEG  
 REV. 10/14/05 - Ph. 2 Final Grades - AEG  
 REV. 7-18-05 - Rear Yard Grades - Lot 4, Blk D - AEC  
 REV. 10-20-2004 - Lots 3 & 4, Blk D - NLS

**AUBURN HILLS 15TH ADDITION**  
**GRADING PLAN**  
 WICHITA, KANSAS

**BAUGHMAN COMPANY P.A.**  
 ENGINEERING, SURVEYING, & PLANNING  
 316-262-7271 • 313 ELLIS • WICHITA, KANSAS 67211

PROJECT NUMBER: \_\_\_\_\_ SHEET: **3** OF **3**

DESIGN: HWB	DRAWN: ATD	APPROVED: _____	DATE: 06/04	SCALE: Noted
-------------	------------	-----------------	-------------	--------------