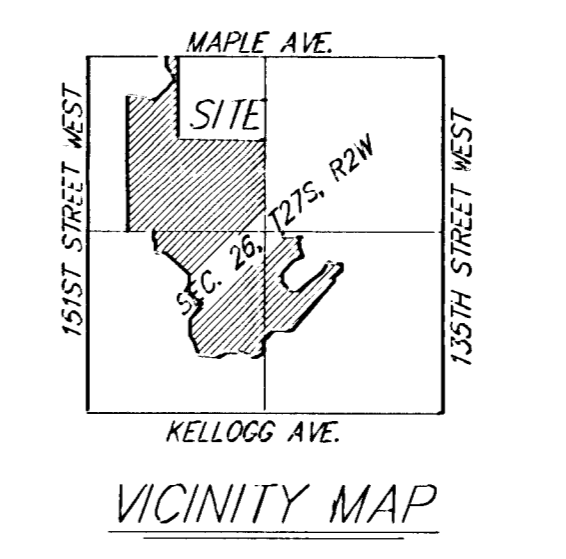
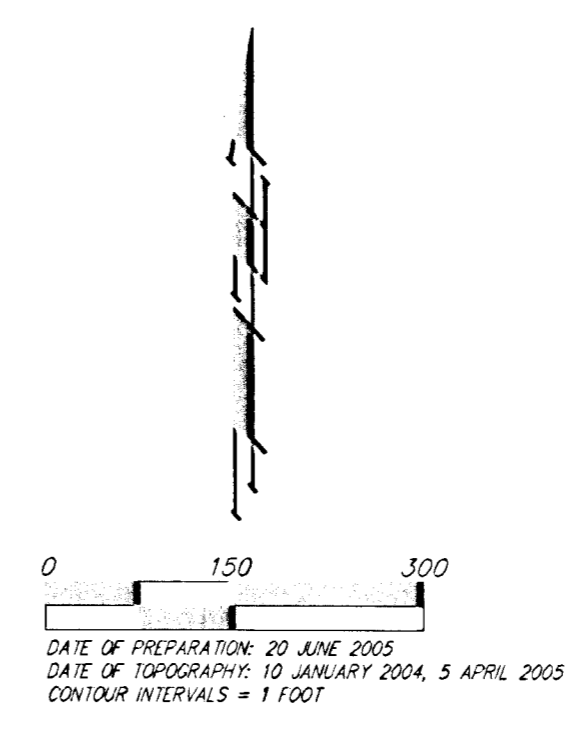
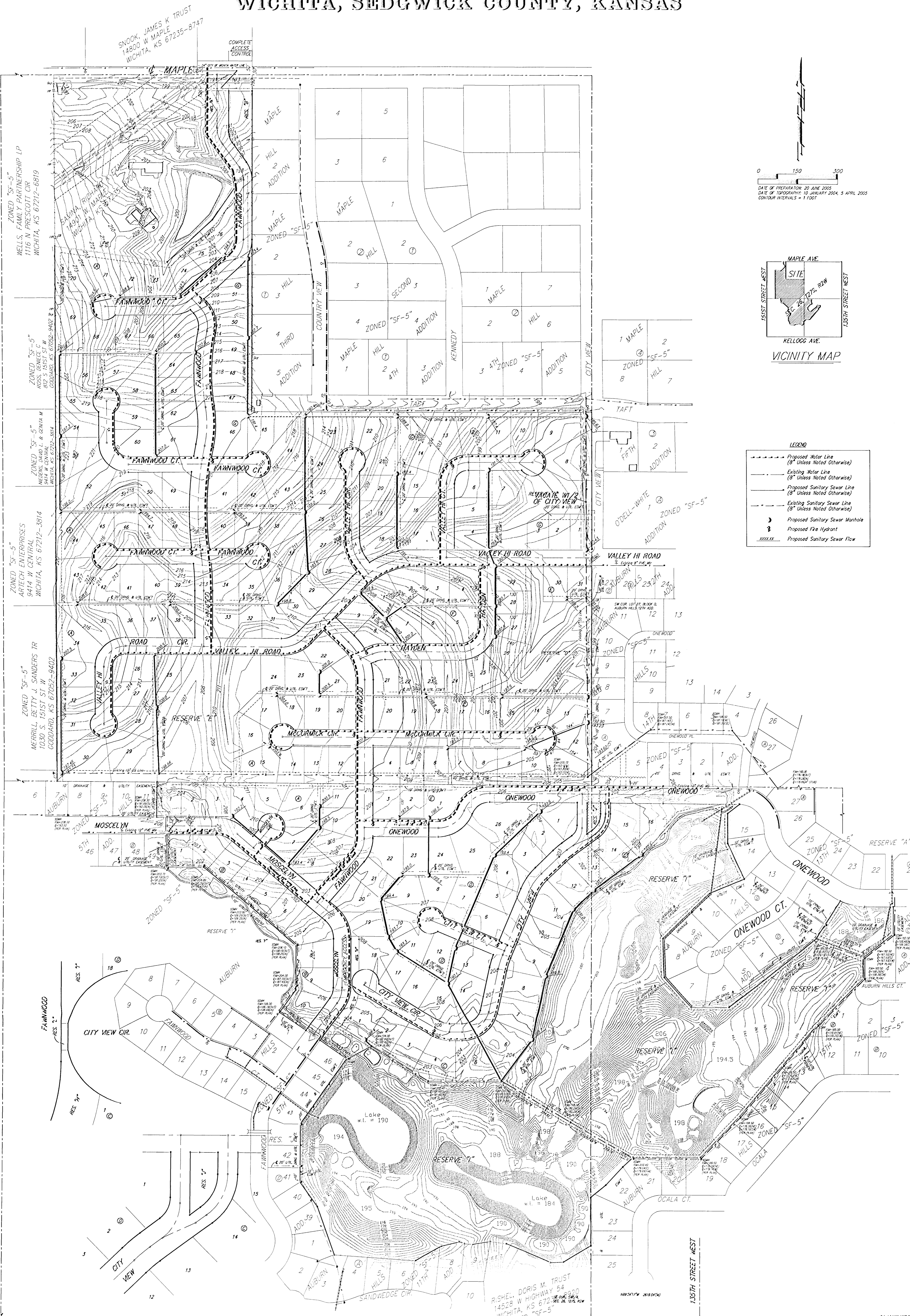


UTILITY PLAN

AUBURN HILLS 18TH ADDITION

WICHITA, SEDGWICK COUNTY, KANSAS



LEGEND

- Proposed Water Line (8" Unless Noted Otherwise)
- Existing Water Line (8" Unless Noted Otherwise)
- Proposed Sanitary Sewer Line (8" Unless Noted Otherwise)
- Existing Sanitary Sewer Line (8" Unless Noted Otherwise)
- Proposed Sanitary Sewer Manhole
- ⊕ Proposed Fire Hydrant
- Proposed Sanitary Sewer Flow

ZONED "SF-5"
 WELLS, FAMILY PARTNERSHIP LP
 1116 N PRESCOTT CIR
 WICHITA, KS 67212-6819

ZONED "SF-5"
 ARTECH ENTERPRISES
 9414 W CENTRAL
 WICHITA, KS 67212-3814

ZONED "SF-5"
 ARTECH ENTERPRISES
 9414 W CENTRAL
 WICHITA, KS 67212-3814

ZONED "SF-5"
 MERRILL, BETTY J. SANDERS TR
 1030 S. 151ST ST W
 GODDARD, KS 67052-9402

ZONED "SF-5"
 MOSCELIN

ZONED "SF-5"
 AUBURN

ZONED "SF-5"
 CITY VIEW

ZONED "SF-5"
 SANDHEDGE CIR

RISHEL, DORIS M. TRUST
 14328 W HIGHWAY 54
 WICHITA, KS 67220-6200
 ZONED "SF-5"

04 AUGUST 2005