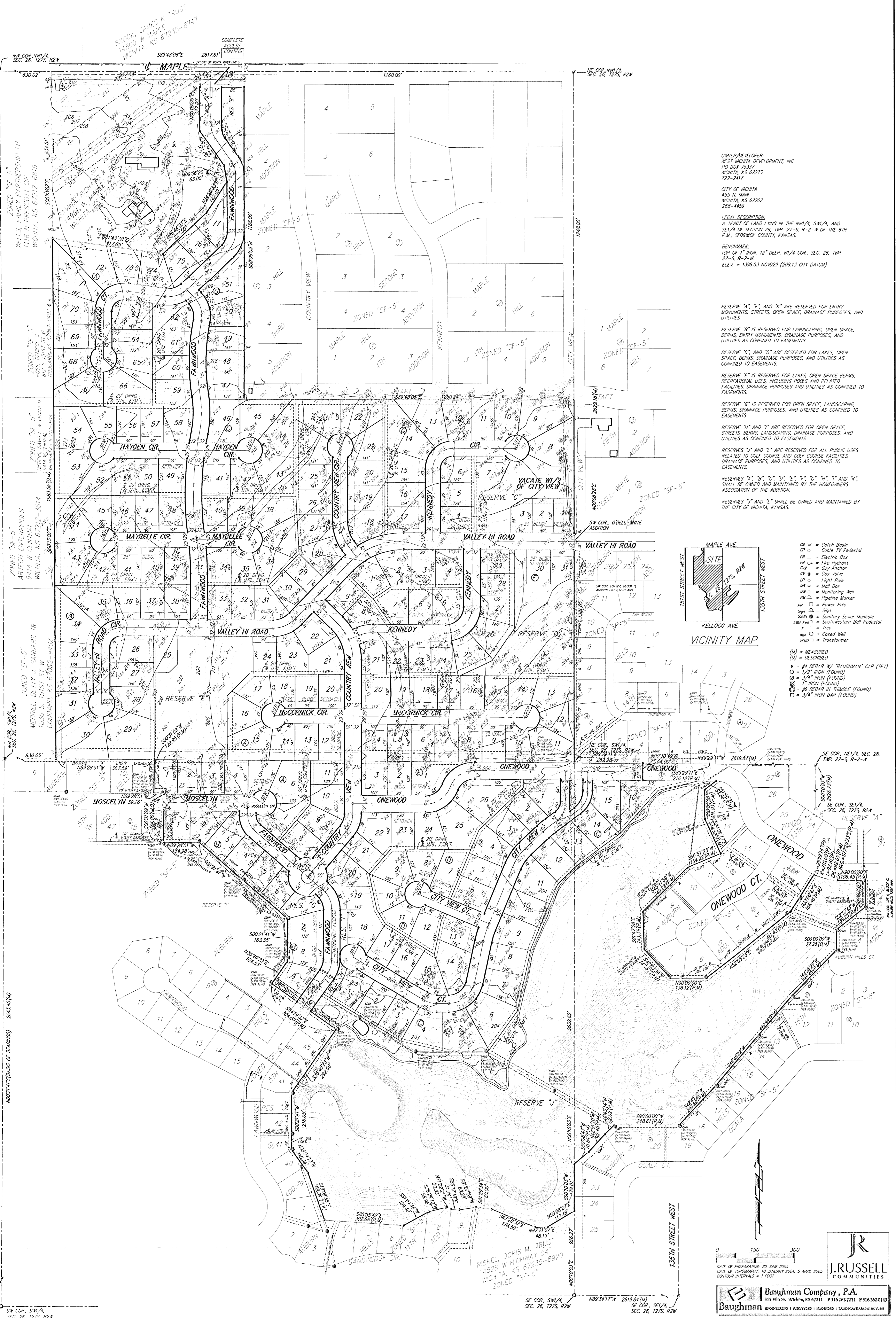


PRELIMINARY PLAT
AUBURN HILLS 18TH ADDITION
 WICHITA, SEDGWICK COUNTY, KANSAS



OWNER/DEVELOPER:
 WEST WICHITA DEVELOPMENT, INC
 510 BOX 23537
 WICHITA, KS 67225
 722-2411

CITY OF WICHITA
 455 N MAIN
 WICHITA, KS 67202
 268-4459

LEGAL DESCRIPTION:
 A TRACT OF LAND LYING IN THE NW 1/4, SW 1/4, AND SE 1/4 OF SECTION 26, T1P, 27-S, R-2-W OF THE 6TH CIVIL, SEDGWICK COUNTY, KANSAS.

BENCHMARK:
 TOP OF 1" IRON, 12" DEEP, W 1/4 COR., SEC. 26, T1P, 27-S, R-2-W.
 ELEV. = 1396.53 NGVD29 (209.13 CITY DATUM)

RESERVE "A", "B", AND "C" ARE RESERVED FOR ENTRY MONUMENTS, STREETS, OPEN SPACE, DRAINAGE PURPOSES, AND UTILITIES.

RESERVE "D" IS RESERVED FOR LANDSCAPING, OPEN SPACE, BERMS, ENTRY MONUMENTS, DRAINAGE PURPOSES, AND UTILITIES AS CONFIRMED TO EASEMENTS.

RESERVE "E", AND "F" ARE RESERVED FOR LAKES, OPEN SPACE, BERMS, DRAINAGE PURPOSES, AND UTILITIES AS CONFIRMED TO EASEMENTS.

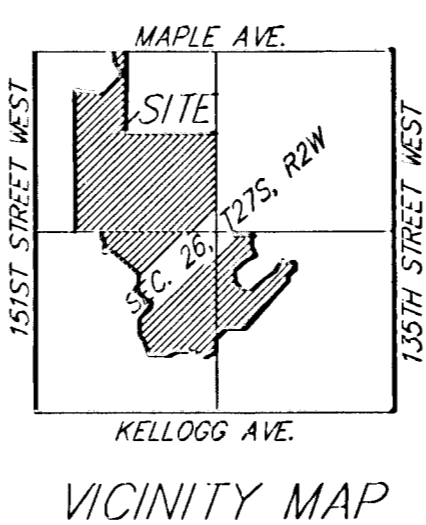
RESERVE "G" IS RESERVED FOR LAKES, OPEN SPACE BERMS, RECREATIONAL USES, INCLUDING PARKS AND RELATED FACILITIES, DRAINAGE PURPOSES AND UTILITIES AS CONFIRMED TO EASEMENTS.

RESERVE "H" IS RESERVED FOR OPEN SPACE, LANDSCAPING, BERMS, DRAINAGE PURPOSES, AND UTILITIES AS CONFIRMED TO EASEMENTS.

RESERVES "I" AND "J" ARE RESERVED FOR ALL PUBLIC USES RELATED TO GOLF COURSE AND GOLF COURSE FACILITIES, DRAINAGE PURPOSES, AND UTILITIES AS CONFIRMED TO EASEMENTS.

RESERVES "K", "L", "M", "N", "O", "P", "Q", "R", "S", "T", "U", "V", AND "W", SHALL BE OWNED AND MAINTAINED BY THE HOMEOWNERS ASSOCIATION OF THE ADDITION.

RESERVES "X" AND "Y" SHALL BE OWNED AND MAINTAINED BY THE CITY OF WICHITA, KANSAS.



- CB = Catch Basin
 - CP = Cable TV Pedestal
 - EB = Electric Box
 - FH = Fire Hydrant
 - GA = Gas Anchor
 - GV = Gas Valve
 - LP = Light Pole
 - MB = Mail Box
 - MM = Monitoring Well
 - PM = Pipeline Marker
 - PP = Power Pole
 - SP = Sign
 - SSM = Sanitary Sewer Manhole
 - SMB Ped = Southwestern Bell Pedestal
 - T = Tree
 - W = Cased Well
 - TR = Transformer
- (M) = MEASURED
 (D) = DESCRIBED
- ⊕ = #4 REBAR W/ "BAUGHMAN" CAP (SET)
 - = 1/2" IRON (FOUND)
 - ⊖ = 3/4" IRON (FOUND)
 - ⊗ = 1" IRON (FOUND)
 - ⊙ = #6 REBAR IN TRIMBLE (FOUND)
 - ⊚ = 3/4" IRON BAR (FOUND)

0 150 300

DATE OF PREPARATION: 20 JUNE 2005
 DATE OF TOPOGRAPHY: 10 JANUARY 2004, 5 APRIL 2005
 CONTOUR INTERVALS = 1 FOOT

J. RUSSELL COMMUNITIES

Baughman Company, P.A.
 315 E. 15th St., Wichita, KS 67211 P 316-262-7771 F 316-262-0149