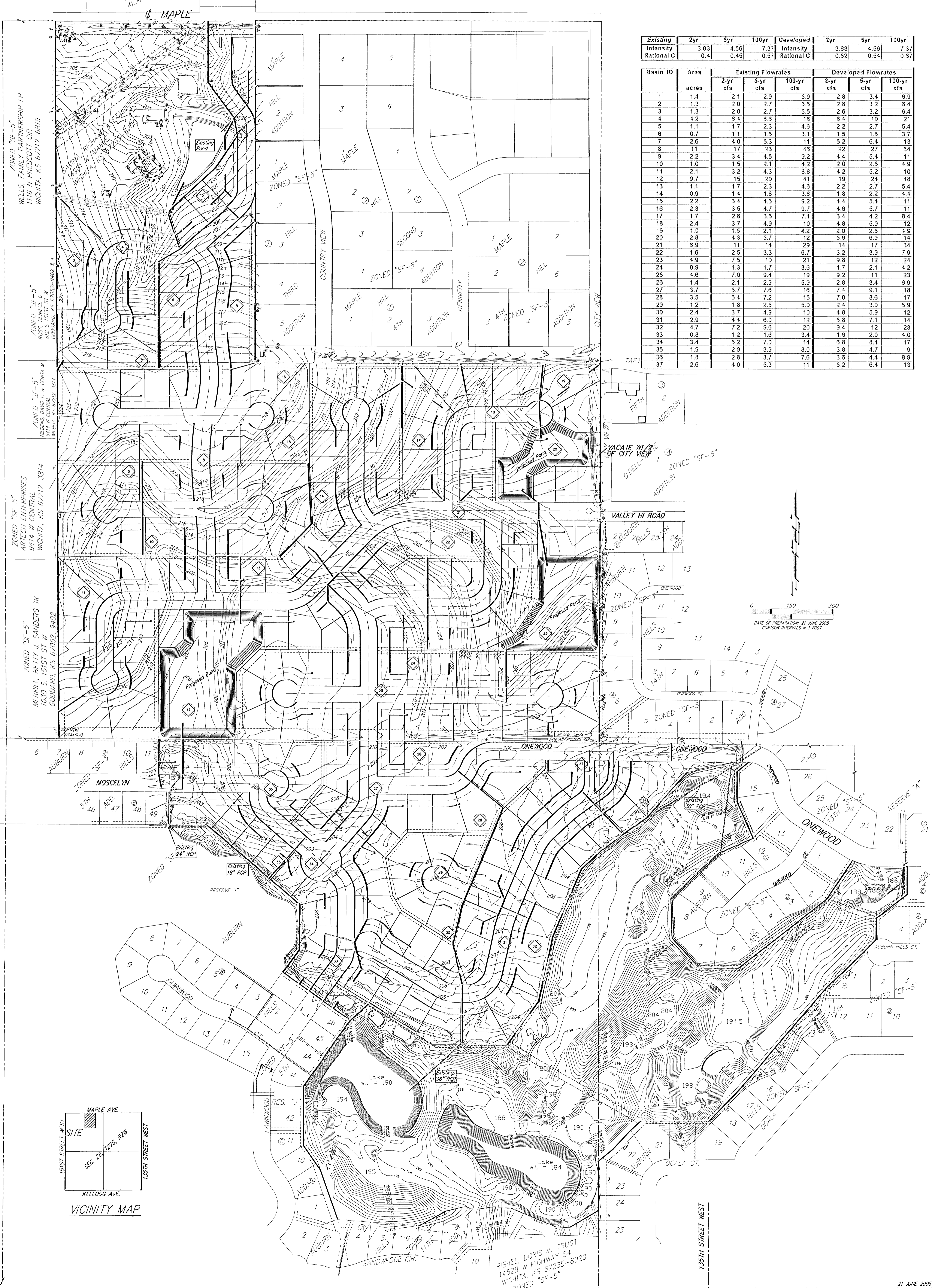


DRAINAGE CONCEPT

AUBURN HILLS 18TH ADDITION

WICHITA, SEDGWICK COUNTY, KANSAS

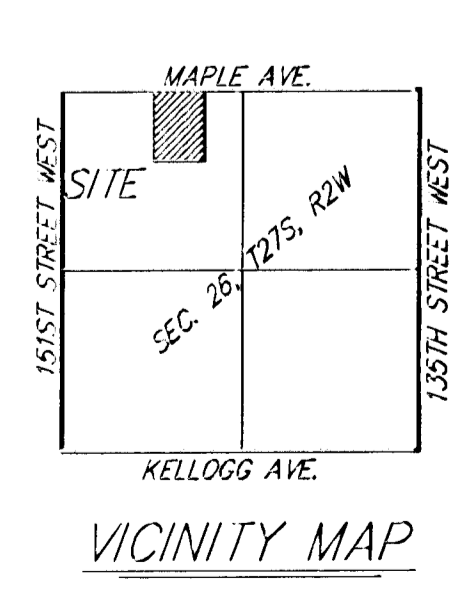
SNODG, JAMES K TRUST
14800 W MAPLE
WICHITA, KS 67235-3747



Existing Intensity	2yr			5yr			100yr			Developed Intensity	2yr			5yr			100yr		
	Intensity	Rational C		Intensity	Rational C		Intensity	Rational C			Intensity	Rational C		Intensity	Rational C		Intensity	Rational C	
3.83	0.4			4.58	0.45		7.37	0.57		3.83	0.52		4.58	0.54		7.37	0.67		

Basin ID	Area acres	Existing Flowrates			Developed Flowrates		
		2-yr cfs	5-yr cfs	100-yr cfs	2-yr cfs	5-yr cfs	100-yr cfs
1	1.4	2.1	2.9	5.9	2.8	3.4	6.9
2	1.3	2.0	2.7	5.5	2.6	3.2	6.4
3	1.3	2.0	2.7	5.5	2.6	3.2	6.4
4	4.2	6.4	8.8	18	8.4	10	21
5	1.1	1.7	2.3	4.8	2.2	2.7	5.4
6	0.7	1.1	1.5	3.1	1.5	1.8	3.7
7	2.8	4.0	5.3	11	5.2	6.4	13
8	1.1	1.7	2.3	4.8	2.2	2.7	5.4
9	2.2	3.4	4.5	9.2	4.4	5.4	11
10	1.0	1.5	2.1	4.2	2.0	2.5	4.9
11	2.1	3.2	4.3	8.8	4.2	5.2	10
12	9.7	15	20	41	19	24	48
13	1.1	1.7	2.3	4.8	2.2	2.7	5.4
14	0.9	1.4	1.8	3.8	1.8	2.2	4.4
15	2.2	3.4	4.5	9.2	4.4	5.4	11
16	2.3	3.5	4.7	9.7	4.8	5.7	11
17	1.7	2.6	3.5	7.1	3.4	4.2	8.4
18	2.4	3.7	4.9	10	4.8	5.9	12
19	1.0	1.5	2.1	4.2	2.0	2.5	4.9
20	2.8	4.3	5.7	12	5.8	6.9	14
21	6.9	11	14	29	14	17	34
22	1.8	2.5	3.3	6.7	3.2	3.9	7.5
23	4.9	7.5	10	21	9.8	12	24
24	0.9	1.3	1.7	3.6	1.7	2.1	4.2
25	4.8	7.0	9.4	19	9.2	11	23
26	1.4	2.1	2.9	5.9	2.8	3.4	6.9
27	3.7	5.7	7.6	16	7.4	9.1	18
28	3.5	5.4	7.2	15	7.0	8.6	17
29	1.2	1.8	2.5	5.0	2.4	3.0	5.9
30	2.4	3.7	4.9	10	4.8	5.9	12
31	2.9	4.4	6.0	12	5.8	7.1	14
32	4.7	7.2	9.6	20	9.4	12	23
33	0.8	1.2	1.6	3.4	1.6	2.0	4.0
34	3.4	5.2	7.0	14	6.8	8.4	17
35	1.9	2.9	3.9	8.0	3.8	4.7	9
36	1.8	2.8	3.7	7.6	3.6	4.4	8.9
37	2.6	4.0	5.3	11	5.2	6.4	13

DATE OF PREPARATION: 21 JUNE 2005
CONTOUR INTERVALS: 1 FOOT



RISHEL, DORIS M. TRUST
14528 W HIGHWAY 54
WICHITA, KS 67235-3920
ZONED "SF-5"