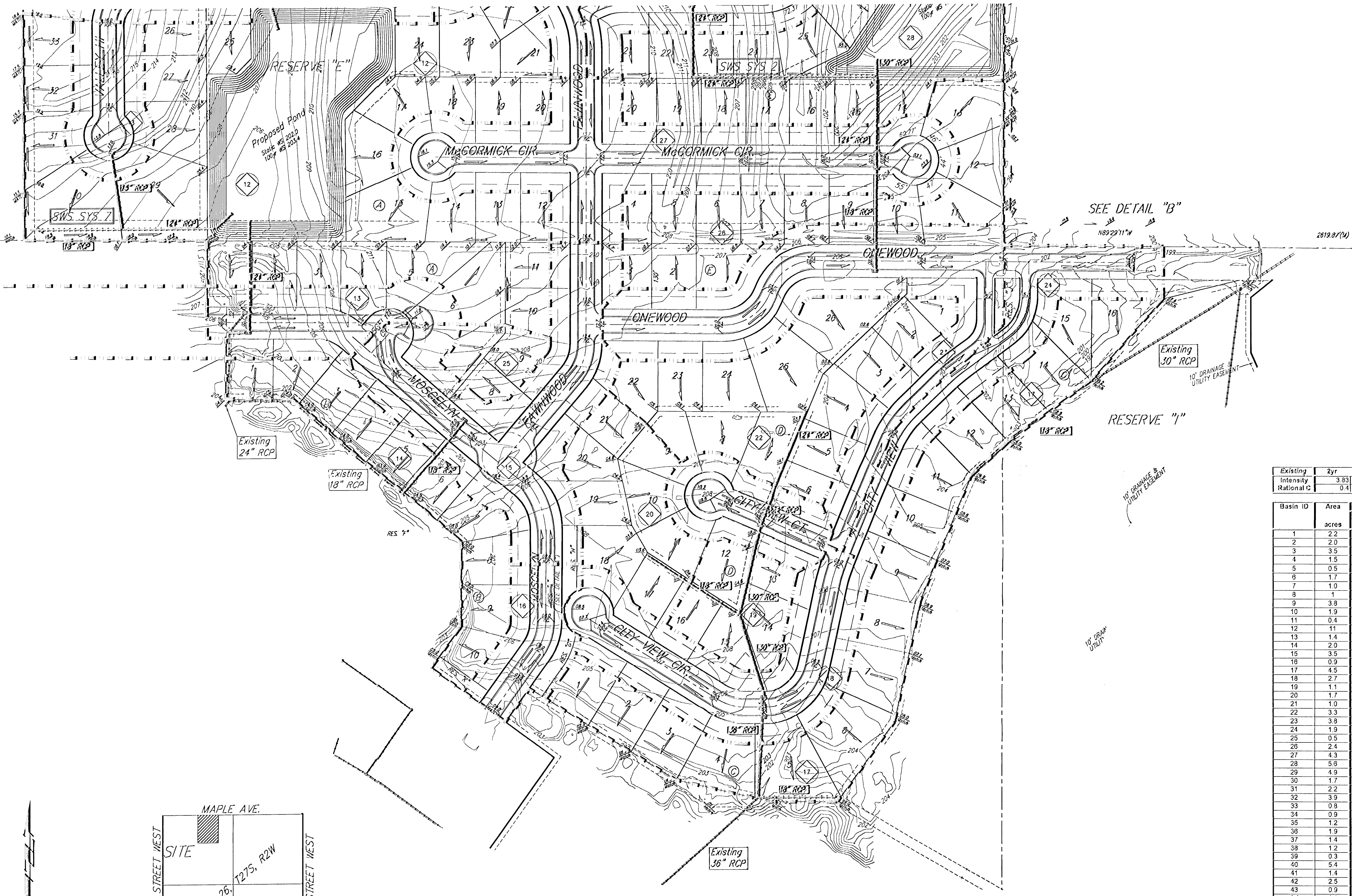
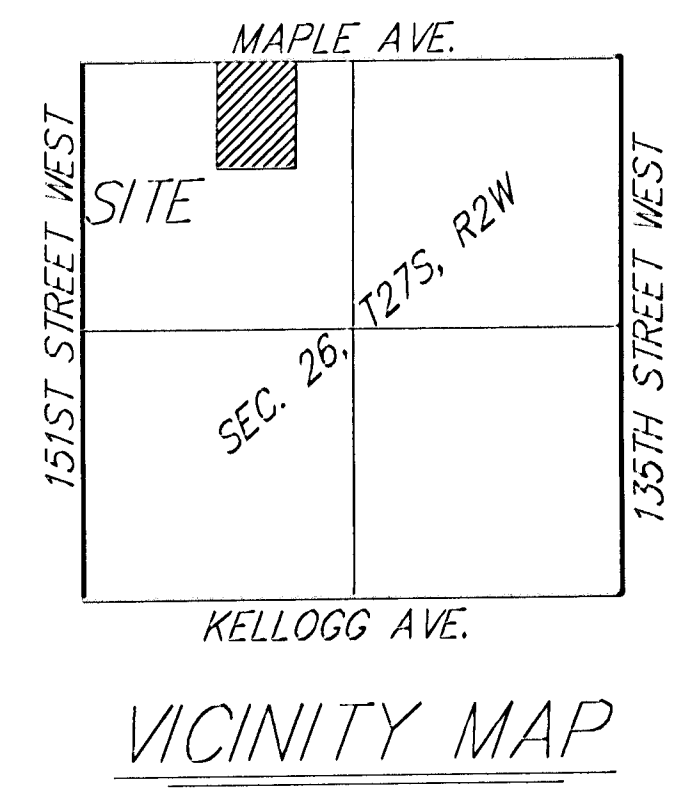


# DRAINAGE PLAN AUBURN HILLS 18TH ADDITION WICHITA, SEDGWICK COUNTY, KANSAS



Existing Intensity	2yr Rational C	5yr	100yr	Developed Intensity	2yr Rational C	5yr	100yr
3.83	0.4	4.56	0.45	7.37	0.57	3.83	0.52
						4.56	0.54
						7.37	0.87

Basin ID	Area acres	Existing Flowrates			Developed Flowrates		
		2-yr cfs	5-yr cfs	100-yr cfs	2-yr cfs	5-yr cfs	100-yr cfs
1	2.2	3.4	4.5	9.2	4.4	5.4	11
2	2.0	3.1	4	9	4	5	10
3	3.5	5.4	7.2	15	7.0	8.6	17
4	1.5	2.3	3.1	6.3	3.0	3.7	7.4
5	0.5	0.8	1.0	2.1	1.0	1.2	2.5
6	1.7	2.6	3.5	7.1	3.4	4.2	8.4
7	1.0	1.5	1.9	4.0	1.9	2.3	4.7
8	1	1.7	2.3	4.6	2.2	2.7	5.4
9	3.8	5.8	8	16	7.6	9	19
10	1.9	2.9	3.9	8.0	3.8	4.7	9.4
11	0.4	0.7	0.9	1.9	0.9	1.1	2.2
12	11	16	22	45	21	26	52
13	1.4	2.1	2.9	5.9	2.8	3.4	6.9
14	2.0	3.1	4.1	8.4	4.0	4.9	9.9
15	3.5	5.4	7.2	15	7.0	8.6	17
16	0.9	1.4	1.8	3.8	1.8	2.2	4.4
17	4.5	6.9	9.2	19	9.0	11	22
18	2.7	4.1	5.5	11	5.4	6.6	13
19	1.1	1.7	2.3	4.6	2.2	2.7	5.4
20	1.7	2.6	3.5	7.1	3.4	4.2	8.4
21	1.0	1.5	1.9	4.2	2.0	2.5	4.9
22	3.3	5.1	6.8	14	6.8	8.1	16
23	3.8	5.8	7.8	16	7.8	9.4	19
24	1.9	2.9	3.9	8.0	3.8	4.7	9.4
25	0.5	0.8	1.0	2.1	1.0	1.2	2.5
26	2.4	3.7	4.9	10	4.8	5.9	12
27	4.3	6.6	8.8	18	8.6	11	21
28	5.6	8.6	11	24	11	14	28
29	4.9	7.5	10	21	9.8	12	24
30	1.7	2.6	3.5	7.1	3.4	4.2	8.4
31	2.2	3.4	4.5	9.2	4.4	5.4	11
32	3.9	6.0	8.0	16	7.8	9.6	19
33	0.8	1.3	1.7	3.5	1.7	2.0	4.1
34	0.9	1.3	1.7	3.6	1.7	2.1	4.2
35	1.2	1.8	2.5	5.0	2.4	3.0	5.9
36	1.9	2.9	3.9	8.0	3.8	4.7	9.4
37	1.4	2.1	2.9	5.9	2.8	3.4	6.9
38	1.2	1.8	2.5	5.0	2.4	3.0	5.9
39	0.3	0.5	0.6	1.3	0.6	0.7	1.5
40	5.4	8	11	23	11	13	27
41	1.4	2.1	2.9	5.9	2.8	3.4	6.9
42	2.5	3.8	5.1	11	5.0	6.2	12
43	0.9	1.4	1.8	4	1.8	2.2	4
44	1.1	1.7	2.3	4.6	2.2	2.7	5.4



DATE OF PREPARATION: 05 AUG 2005  
CONTOUR INTERVALS = 1 FOOT