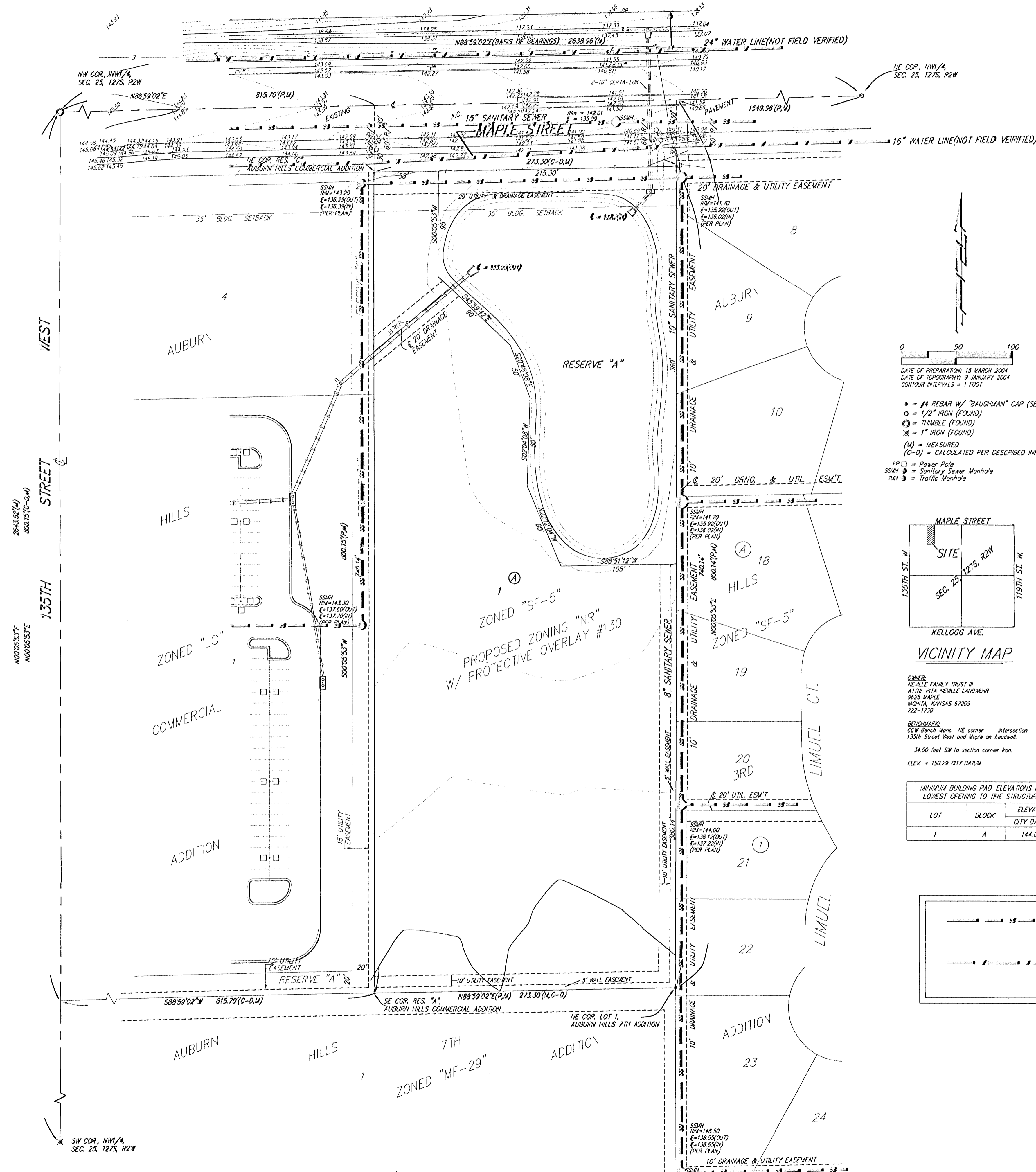


# UTILITY PLAN

## AUBURN HILLS COMMERCIAL 3RD ADDITION

### WICHITA, SEDGWICK COUNTY, KANSAS

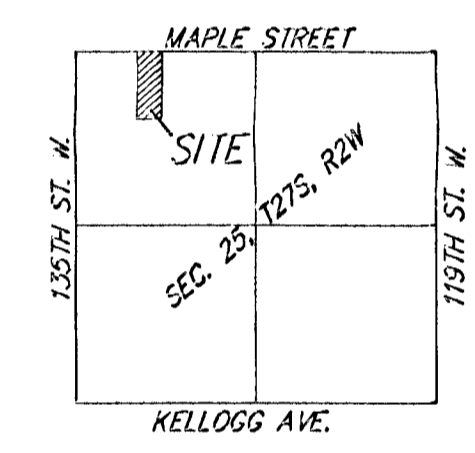


0 50 100

DATE OF PREPARATION: 15 MARCH 2004  
 DATE OF TOPOGRAPHY: 9 JANUARY 2004  
 CONTOUR INTERVALS = 1 FOOT

● = #4 REBAR W/ "BAUGHMAN" CAP (SET)  
 ○ = 1/2" IRON (FOUND)  
 ⊙ = TRIMBLE (FOUND)  
 ✕ = 1" IRON (FOUND)  
 (M) = MEASURED  
 (C-D) = CALCULATED PER DESCRIBED INFO.

RP(1) = Rebar Pole  
 SSM# = Sanitary Sewer Manhole  
 TM# = Traffic Manhole



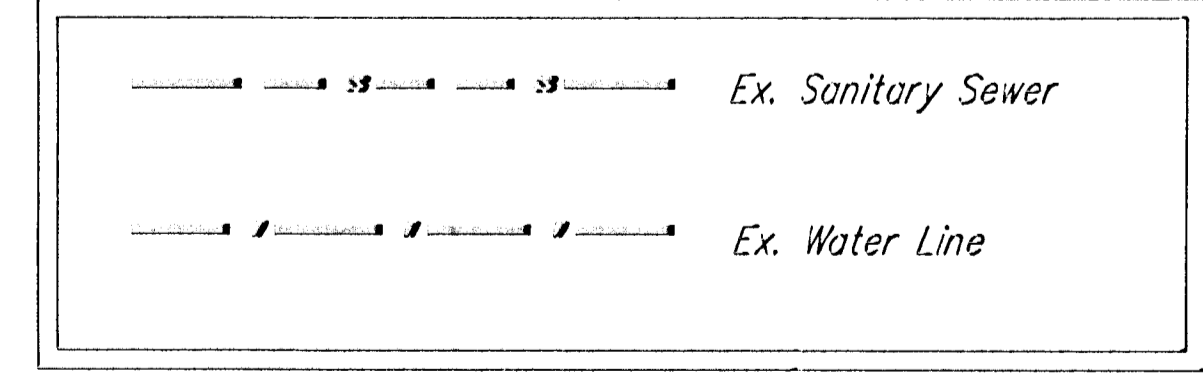
VICINITY MAP

OWNER:  
 NEVILLE FAMILY TRUST II  
 ATTN: BITA NEVILLE LANDOWNER  
 9623 MAPLE  
 WICHITA, KANSAS 67209  
 722-1130

BENCHMARK:  
 CCW Bench Mark, NE corner of intersection  
 135th Street West and Maple on heading.  
 2400 feet SW to section corner iron.  
 ELEV. = 150.29 CITY DATUM

MINIMUM BUILDING PAD ELEVATIONS FOR LOWEST OPENING TO THE STRUCTURES		
LOT	BLOCK	ELEVATION CITY DATUM
1	A	144.0

#### LEGEND



NOTE:  
 A drainage plan has been developed for this subdivision and is on file with the City of Wichita, Kansas. Drainage intent shall remain as depicted or as modified with the approval of the City Engineer of the City of Wichita, Kansas. No obstructions which impede the flow of this drainage plan shall be allowed.