

DILLONS STORE #81
13415 W. MAPLE ST.
WICHITA, KS 67235

LEGAL DESCRIPTION

Lot 1, Block 1, and Reserve "A", Auburn Hills Commercial
3rd Addition, Wichita, Sedgwick County, Kansas.

BENCH MARK

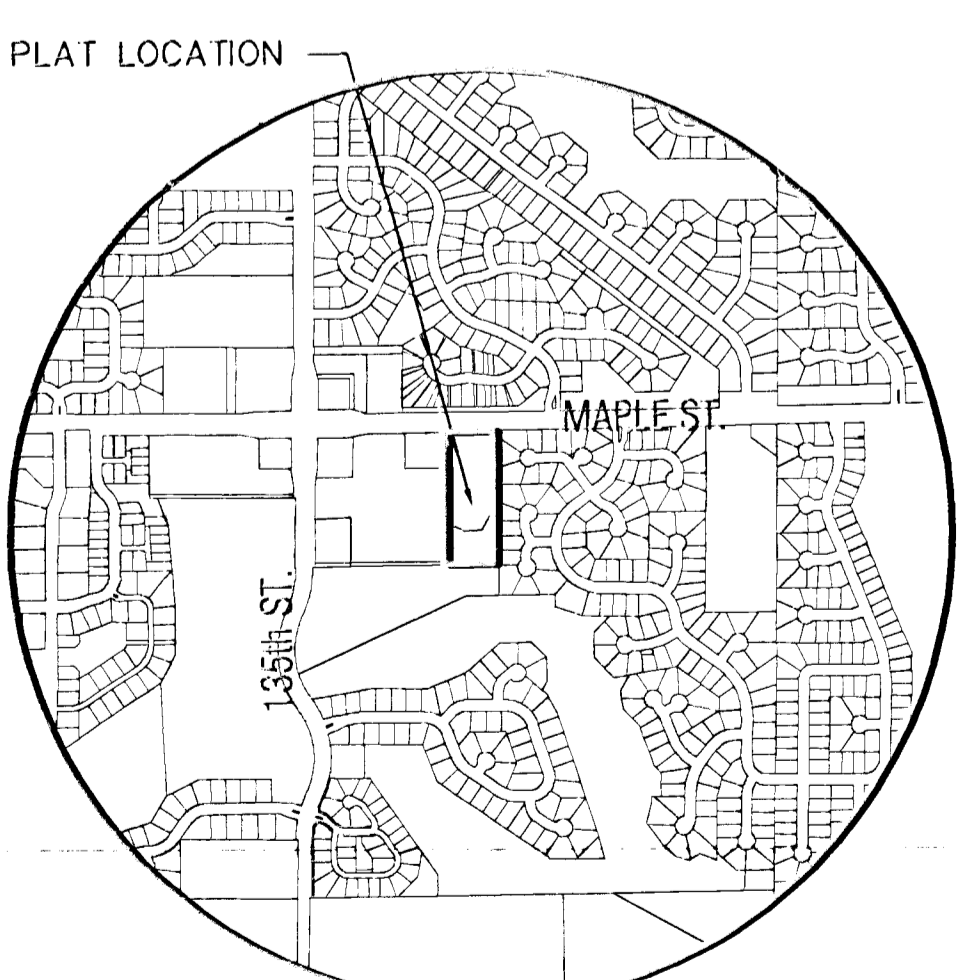
BM "Cut on East Side of Light Pole Base
Elev. = 147.63 City Datum

NOTES

- ZONING: Existing - NR & SF-5 & P.O.-130
Proposed - ALL NR & P.O.-130 as per the terms
and provisions contained in the document entitled
"Notice of Protective Overlay" recorded as
Doc/Fin-Pgs: 28591454 of official records.
- EXISTING USE: Vacant Land
- PLAT AREA: 4.64 AC
- SURVEY DATE: May 10th, 2005 (Baughman, Co., P.A.)
- MINIMUM PADS: As shown on the Final Drainage Plan
- LOT TOTAL: 1
- RESERVE "A": Drainage, opens pace, landscaping, irrigation.
- Per FEMA FIRM 200321 0200 A, effective date of June 3rd,
1986, subject property lies w/in Zone C.

LEGEND

- △ - Sec. Corner
- ⤴ - Set #4 Rebar w/ "Baughman" cup
- ⊙ - Fnd. #4 Rebar w/ "Baughman" cup
- ⊕ - GAS METER
- ⊙ - SANITARY SEWER MANHOLE
- ⊕ - POWER POLE/GUY ANCHOR
- ⊕ - ELECTRIC BOX
- ⊕ - SIGN
- ⊕ - GATE
- ⊕ - TREES
- ⊕ - POLE
- ⊕ - FIRE HYDRANT
- ⊕ - WATER VALVE
- ⊕ - WATER METER
- ⊕ - TELEPHONE RISER
- ⊕ - FENCE
- ⊕ - STORM SEWER PIPE
- ⊕ - WATER LINE
- ⊕ - SANITARY SEWER LINE
- ⊕ - GAS LINE
- ⊕ - TELEPHONE LINE
- ⊕ - OVERHEAD ELECTRIC
- ⊕ - ZONING LINE



VICINITY MAP

PRELIMINARY PLAT
AUBURN HILLS COMMERCIAL 4th ADDITION

OWNER / DEVELOPER: Occidental Management, Inc. 300 N. Main St. Wichita, KS 67202

Date: August 1st, 2005



8/1/2005 10:27:30 AM GDT