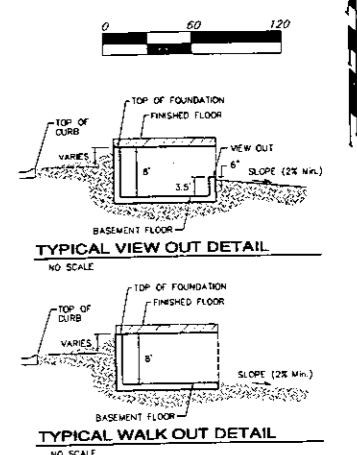
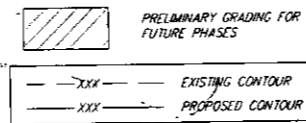


BENCHMARK:
 3" BRASS DISC ON TOP OF CURB AT NORTHWEST END OF CURB RETURN, NORTHEAST CORNER OF THE INTERSECTION OF LAKE RIDGE AND LAKE RIDGE CT., TYLER'S LANDING 2ND ADD.
 BRASS DISC IS SOUTH OF FIRE HYDRANT
 BRASS DISC IS SOUTHWEST OF THE MOST SOUTHERLY CORNER OF LOT 67, BLOCK B, IN SAID TYLER'S LANDING 2ND ADD.
 ELEV. = 1332.77 NVD029
 (145.37 CITY DATUM)

BENCHMARK:
 3" BRASS DISC ON TOP OF NORTH CURB ON 34TH STREET NORTH IN TYLER'S LANDING 2ND ADD.
 BRASS DISC IS SOUTH OF FIRE HYDRANT
 BRASS DISC IS SOUTH OF THE SOUTH LOT CORNER COMMON TO LOTS 7 AND 8, BLOCK A, IN SAID TYLER'S LANDING 2ND ADD.
 ELEV. = 1335.64 NVD029
 (148.24 CITY DATUM)



- NOTES:
1. PROPOSED TOP OF FOUNDATION ELEVATIONS ARE SHOWN ON PLANS. CONTRACTOR TO SET FINISHED FLOOR AND GARAGE FLOOR ELEVATIONS. ALL STREET ELEVATIONS SHOWN ON PLANS ARE FOR TOP OF CURB (FULL-HEIGHT).
 2. THIS GRADING PLAN IS DESIGNED WITH VIEW-OUTS AND WALK-OUTS. ELEVATIONS SHOWN AS XX.X V.O. DEPICT VIEW-OUT STRUCTURES. ELEVATIONS SHOWN AS XX.X V.O. DEPICT WALK-OUT STRUCTURES.
 3. ALL LOTS SHALL MEET MINIMUM PAD REQUIREMENT AS SHOWN ON THE RECORDED PLAT.

LOT	BLOCK	CITY DATUM	NVD029
1-5	D	151.0	1338.4
7-9	D	151.0	1338.4
21-23	D	145.5	1332.9
37-43	D	145.5	1332.9

4. LOT DIMENSIONS HAVE BEEN OMITTED ON THIS PLAN REFER TO THE RECORDED PLAT FOR FINAL DIMENSION, EASEMENT, & BUILDING SETBACK INFORMATION.
5. HOUSE PAD ELEVATIONS DEPICTED WITH BOLD OUTLINES AND NOTED WITH THIS SYMBOL INDICATE THAT DEEP FOOTINGS OR DEEP FOUNDATIONS MAY BE REQUIRED.
6. A DRAINAGE PLAN HAS BEEN DEVELOPED FOR THIS SUBDIVISION AND IS ON FILE WITH THE CITY OF WICHITA, KANSAS. DRAINAGE INTENT SHALL REMAIN AS DEPICTED OR AS MODIFIED WITH THE APPROVAL OF THE CITY ENGINEER OF THE CITY OF WICHITA, KANSAS. NO OBSTRUCTIONS WHICH IMPED THE FLOW OF THIS DRAINAGE PLAN SHALL BE ALLOWED.
7. ALL ELEVATIONS SHOWN ARE CITY OF WICHITA DATUM

Existing Pond
 W.S. = 148.5
 Bottom = 142.5
 D.W.S. = 149.9

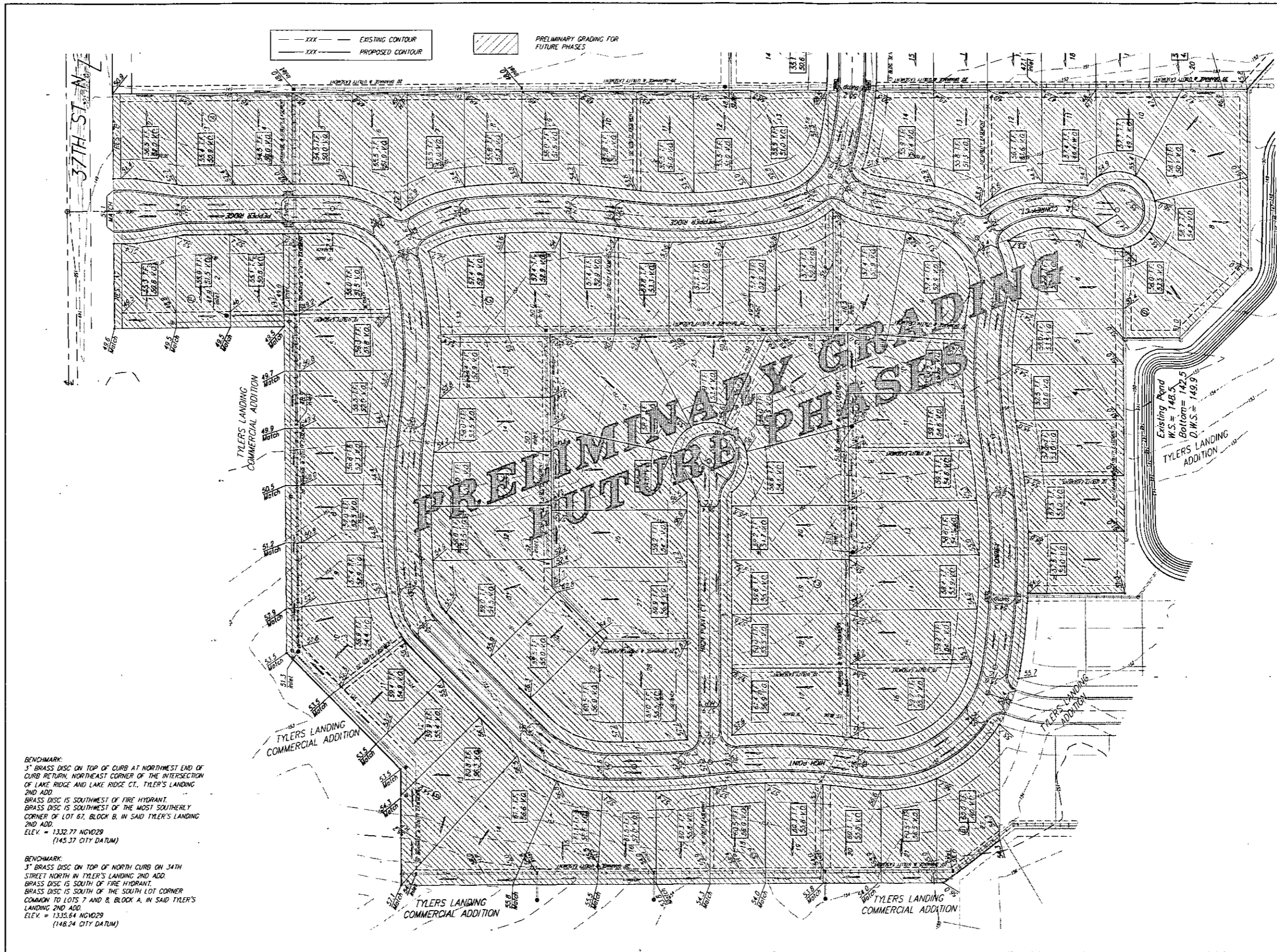
TYLER'S LANDING
 2ND ADDITION
 Existing Pond
 W.S. = 137.5
 Bottom = 127.5
 D.W.S. = 142.4

Baughman TYLER'S LANDING 3RD ADDITION
SUBDIVISION GRADING PLAN
 WICHITA, KANSAS

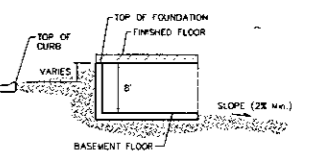
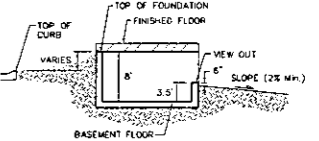
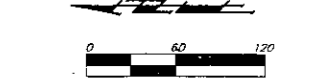
Engineering & Surveying | Planning | Landscape Architecture

PROJECT NUMBER: _____ DRAWN: BLG/TRK
 REVISIONS: _____ APPROVED: _____ DATE: 12/29/05
 SCALE: _____ SHEET: 2 OF 2

FILE: GRADE\TYLER'S LANDING 3RD\GRADE.DWG



--- XXX --- EXISTING CONTOUR
 - - - - - PROPOSED CONTOUR
 [Hatched Box] PRELIMINARY GRADING FOR FUTURE PHASES



NOTES

1. PROPOSED TOP OF FOUNDATION ELEVATIONS ARE SHOWN ON PLANS. CONTRACTOR TO SET FINISHED FLOOR AND GARAGE FLOOR ELEVATIONS. ALL STREET ELEVATIONS SHOWN ON PLANS ARE FOR TOP OF CURB (FULL HEIGHT).
2. THIS GRADING PLAN IS DESIGNED WITH WALK-OUTS AND WALK-OUTS. ELEVATIONS SHOWN AS XXX V.O. DEPICT WALK-OUT STRUCTURES. ELEVATIONS SHOWN AS XXX W.O. DEPICT WALK-OUT STRUCTURES.
3. ALL LOTS SHALL MEET MINIMUM PAD REQUIREMENT AS SHOWN ON THE RECORDED PLAT.

LOT	BLOCK	CITY DATUM	ELEVATION
1-5	D	151.0	1338.4
7-9	D	151.0	1338.4
21-23	D	145.5	1332.9
37-43	D	145.5	1332.9

4. LOT DIMENSIONS HAVE BEEN OMITTED ON THIS PLAN. REFER TO THE RECORDED PLAT FOR FINAL DIMENSION, EASEMENT, & BUILDING SETBACK INFORMATION.
5. HOUSE PAD ELEVATIONS DEPICTED WITH BOLD OUTLINES AND NOTED WITH THIS SYMBOL ● INDICATE THAT DEEP FOOTINGS OR DEEP FOUNDATIONS MAY BE REQUIRED.
6. A DRAINAGE PLAN HAS BEEN DEVELOPED FOR THIS SUBDIVISION AND IS ON FILE WITH THE CITY OF WICHITA, KANSAS. DRAINAGE INTENT SHALL REMAIN AS DEPICTED OR AS MODIFIED WITH THE APPROVAL OF THE CITY ENGINEER OF THE CITY OF WICHITA, KANSAS. NO OBSTRUCTIONS WHICH IMPEDE THE FLOW OF THIS DRAINAGE PLAN SHALL BE ALLOWED.
7. ALL ELEVATIONS SHOWN ARE CITY OF WICHITA DATUM.

BENCHMARK:
 3" BRASS DISC ON TOP OF CURB AT NORTHWEST END OF CURB RETURN, NORTHEAST CORNER OF THE INTERSECTION OF LAKE RIDGE AND LAKE RIDGE CT., TYLER'S LANDING 2ND ADD.
 BRASS DISC IS SOUTHWEST OF FIRE HYDRANT.
 BRASS DISC IS SOUTHWEST OF THE MOST SOUTHERLY CORNER OF LOT 67, BLOCK B, IN SAID TYLER'S LANDING 2ND ADD.
 ELEV. = 1332.77 NGVD29
 (145.37 CITY DATUM)

BENCHMARK:
 3" BRASS DISC ON TOP OF NORTH CURB ON 34TH STREET NORTH IN TYLER'S LANDING 2ND ADD.
 BRASS DISC IS SOUTH OF FIRE HYDRANT.
 BRASS DISC IS SOUTH OF THE SOUTH LOT CORNER COMMON TO LOTS 7 AND 8, BLOCK A, IN SAID TYLER'S LANDING 2ND ADD.
 ELEV. = 1335.64 NGVD29
 (148.24 CITY DATUM)

		TYLER'S LANDING 3RD ADDITION SUBDIVISION GRADING PLAN WICHITA, KANSAS	
		Baughman Company, P.A. 215 S.W. 10th, KS 67211 F 316-263-3771 F 316-263-8146 ENGINEERING SURVEYING PLANNING LANDSCAPE ARCHITECTURE	
PROJECT NUMBER:	DESIGNER:	DRAWN BY:	DATE:
REVISIONS:	APPROVED:	CHECKED:	DATE:
SCALE:		SHEET:	
1 OF 2		F:\GRADE\SOUTHERN RIDGE 4TH GRADE.DWG	