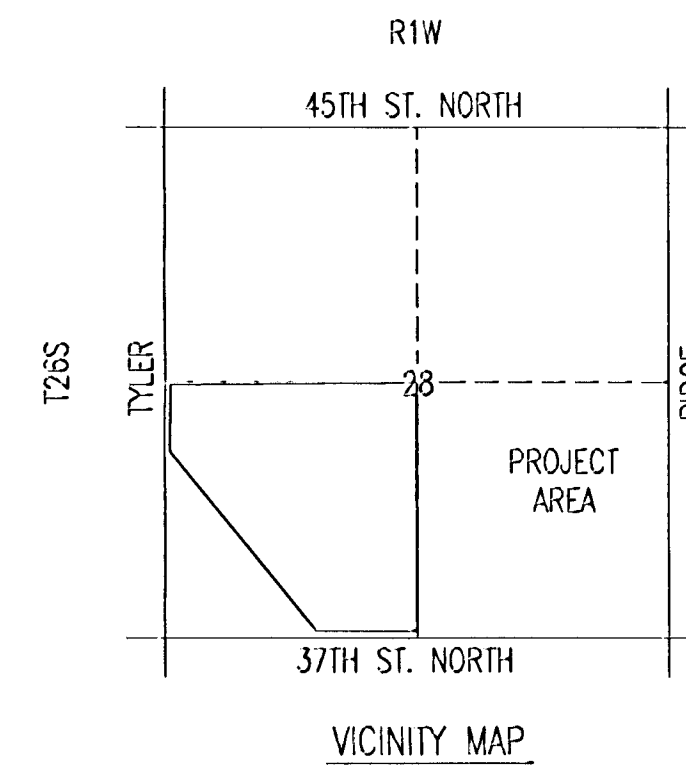


DRAINAGE PLAN FOR
AVALON PARK
 AN ADDITION TO WICHITA
 SEDGWICK COUNTY, KANSAS

SCALE: 1" = 100'
 ADD 1300 TO SPOT ELEVATIONS FOR M.G.V.D. ELEVATION
 • = 3/4" IRON PIPE W/PEC CAP UNLESS OTHERWISE NOTED

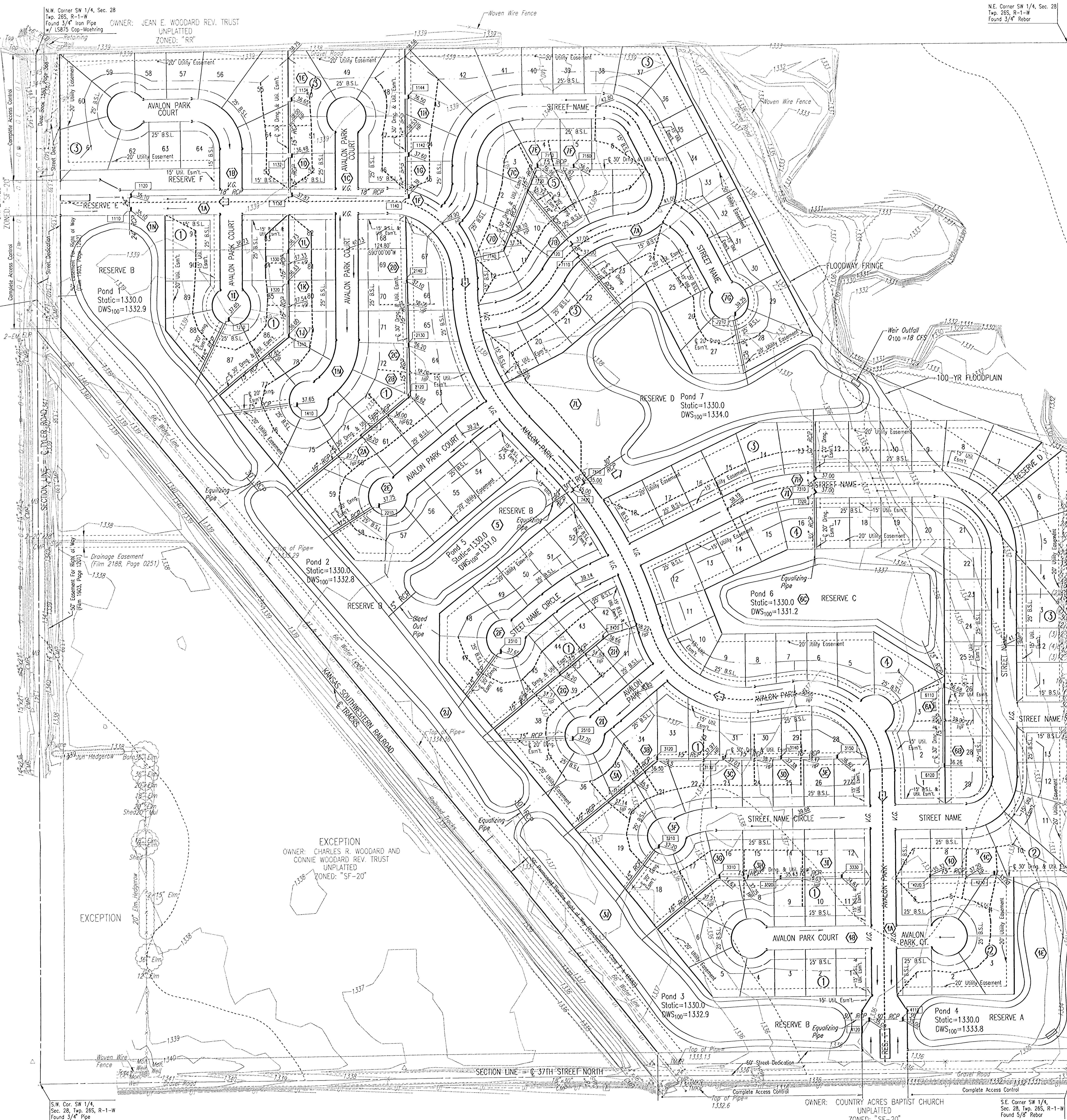
- LEGEND**
- SOIL GROUP BOUNDARY
 - (A) BASIN IDENTIFIER
 - MINOR BASIN BOUNDARY
 - MAJOR BASIN BOUNDARY
 - ➔ MAJOR STORM WATER OVERFLOW (Q100)
 - MINOR STORM WATER FLOW (Q2)
 - NODE IDENTIFIER
 - STORM SEWER AND INLET
 - PRIVATE STORM SEWER AND INLET (BY OWNER)
 - STORM SEWER AND MANHOLE
 - SPOT ELEVATION
 - HIGH POINT ELEVATION
 - MATCH EXISTING ELEVATION



- BASIN 1 SHALL BE GRADED TO DRAIN TO PROPOSED POND #1 VIA APPROVED DRAINAGE CONVEYANCE METHODS.
- BASIN 2 SHALL BE GRADED TO DRAIN TO PROPOSED POND #2 VIA APPROVED DRAINAGE CONVEYANCE METHODS.
- BASIN 3 SHALL BE GRADED TO DRAIN TO PROPOSED POND #3 VIA APPROVED DRAINAGE CONVEYANCE METHODS.
- BASIN 4 SHALL BE GRADED TO DRAIN TO PROPOSED POND #4 VIA APPROVED DRAINAGE CONVEYANCE METHODS.
- BASIN 5 SHALL BE GRADED TO DRAIN TO PROPOSED POND #5 VIA APPROVED DRAINAGE CONVEYANCE METHODS.
- BASIN 6 SHALL BE GRADED TO DRAIN TO PROPOSED POND #6 VIA APPROVED DRAINAGE CONVEYANCE METHODS.
- BASIN 7 SHALL BE GRADED TO DRAIN TO PROPOSED POND #7 VIA APPROVED DRAINAGE CONVEYANCE METHODS.

- BM #50 - "T" Post, 1/2 mile E. of Tyler Rd., 14' N. of N. edge 37th St. N. Elev.=1333.15
- BM #51 - "T" Post, 3/8 mile E. of Tyler Rd., 14' N. of N. edge 37th St. N., E. of R.R. tracks 188' Elev.=1335.55
- BM #52 - "T" Post, 1/4 mile E. of Tyler Rd., 12' N. of N. edge 37th St. N., W. of R.R. tracks Elev.=1336.68
- BM #53 - Found bridge spike in SW face Power Pole at SW corner 37th St. N. and Tyler Rd. Elev.=1343.38
- BM #54 - R.R. Spike in E. face of 2nd Power Pole N. of 37th St. N., W. side Tyler Rd. at House #3803 Elev.=1342.89
- BM #55 - R.R. Spike in E. face Power Pole W. side Tyler Rd. at House #3915 Elev.=1340.28
- BM #56 - R.R. Spike in E. face Power Pole W. side Tyler Rd. 2nd Pole S. of R.R. Tracks Elev.=1339.98
- BM #57 - Chiseled "d" on S. end RCP at entrance to "the edge" Paintball Adventures, E. side Tyler Rd. between R.R. Tracks and K96 Highway. Elev.=1340.74
- BM #58 - Chiseled "d" on S. end concrete headwall, E. end RCB under Tyler Rd. at 1/2 mile line, S. of K96 Highway. Elev.=1342.03

MINIMUM OPENINGS	ELEVATION (N.G.V.D.)	CITY DATUM
BLOCK 1		
LOTS 1-5, 18-19, 36-38, 46-59, 75-77, 87-91	1338.00	150.6
LOTS 6-15, 20-22, 33-35	1338.20	150.8
LOTS 16-17	1338.30	150.9
LOTS 71-72	1338.50	151.2
LOTS 80-85	1338.80	151.4
LOTS 39, 44-45, 60-61, 74	1338.90	151.5
LOTS 40-43, 78-79, 86	1339.00	152.5
LOTS 23, 31-32, 62-65, 71-73	1339.30	151.9
LOTS 24-30	1339.70	152.3
BLOCK 2		
LOTS 1-4, 10-13	1338.00	150.6
LOTS 5-8	1338.20	150.8
BLOCK 3		
LOTS 1-36	1338.00	150.6
LOTS 62-64	1339.00	151.6
LOTS 50-55	1339.20	151.8
LOTS 43-49	1340.00	152.6
LOTS 37-42	1340.50	153.1
LOTS 56-61	1341.00	153.6
BLOCK 4		
LOTS 1-26	1338.00	150.6
LOTS 1-2, 27-29	1339.00	151.6
BLOCK 5		
LOTS 2-4, 9-10	1338.40	151.0
LOTS 5-8	1338.90	151.5
LOTS 1, 11-12	1339.10	151.7



N.W. Corner SW 1/4, Sec. 28, Twp. 26S, R-1-W
 Found 3/4" Iron Pipe w/ 1.50' Top-Meeting
 UNPLATTED
 ZONED: "RR"
 OWNER: JEAN E. WOODARD REV. TRUST

N.E. Corner SW 1/4, Sec. 28, Twp. 26S, R-1-W
 Found 3/4" Rebar

EXCEPTION
 OWNER: CHARLES R. WOODARD AND
 CONNIE WOODARD REV. TRUST
 UNPLATTED
 ZONED: "SF-20"

S.W. Cor SW 1/4, Sec. 28, Twp. 26S, R-1-W
 Found 3/4" Pipe

OWNER: COUNTRY ACRES BAPTIST CHURCH
 UNPLATTED
 ZONED: "SF-20"

S.E. Corner SW 1/4, Sec. 28, Twp. 26S, R-1-W
 Found 5/8" Rebar