

AVALON PARK 3RD

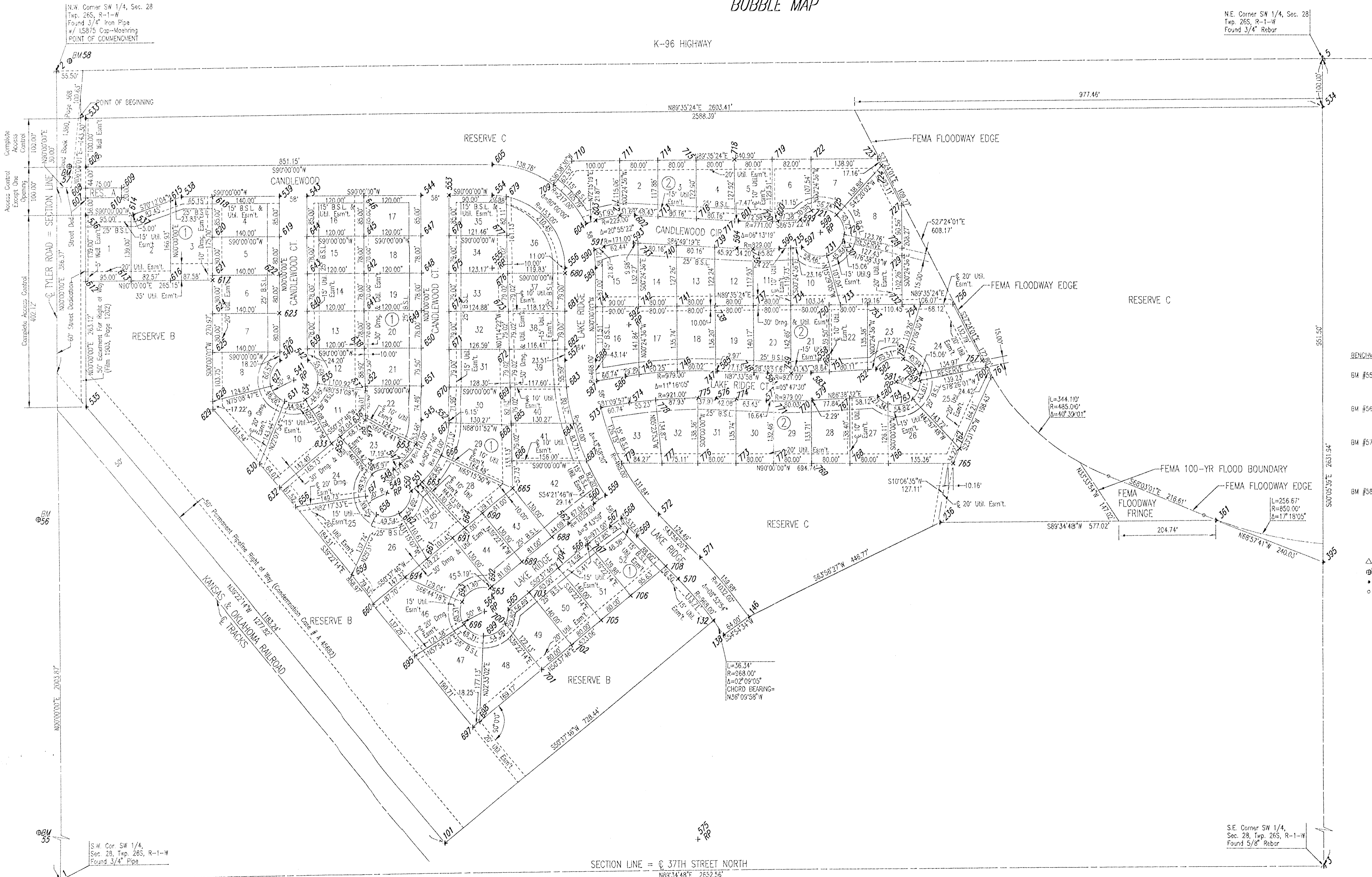
AN ADDITION TO WICHITA, SEDGWICK COUNTY, KANSAS

BUBBLE MAP

K-96 HIGHWAY

N.E. Corner SW 1/4, Sec. 28
Twp. 26S, R-1-W
Found 3/4" Rebar

N.W. Corner SW 1/4, Sec. 28
Twp. 26S, R-1-W
Found 3/4" Iron Pipe
w/ 1.5875 Cap-Mooring
POINT OF COMMENCEMENT



S.E. Corner SW 1/4,
Sec. 28, Twp. 26S, R-1-W
Found 5/8" Rebar

SCALE: 1" = 100'

BENCHMARKS:

- BM #55 - R.R. Spike in E. face Power Pole W. side
Tyler Rd. at House #3915
Elev.=1340.28 N.G.V.D.
Elev.=152.88 CITY DATUM
- BM #56 - R.R. Spike in E. face Power Pole W.
side Tyler Rd. 2nd Pole S. of R.R. Tracks
Elev.=1339.88 N.G.V.D.
Elev.=152.58 CITY DATUM
- BM #57 - Chiseled "d" on S. end RCP of entrance
to "the edge" Paintball Adventures,
E. side Tyler Rd. between R.R. Tracks
and K96 Highway.
Elev.=1340.74 N.G.V.D.
Elev.=153.74 CITY DATUM
- BM #58 - Chiseled "d" on S. end concrete headwall,
E. end RCB under Tyler Rd. at 1/2 mile
line S. of K96 Highway.
Elev.=1342.03 N.G.V.D.
Elev.=154.63 CITY DATUM

LEGEND

- △ = SECTION CORNER
- ⊕ = BENCHMARK/VERTICAL CONTROL POINT
- = 1/2" REBAR W/PEC CAP UNLESS OTHERWISE NOTED
- = NO MONUMENT SET

DSNR: RMH OPER: JJS SCALE: 1"=100.00
 C:\2003\05601\DD\Ang\05601 Bubble Map 02-16-2005 02:32:24 pm