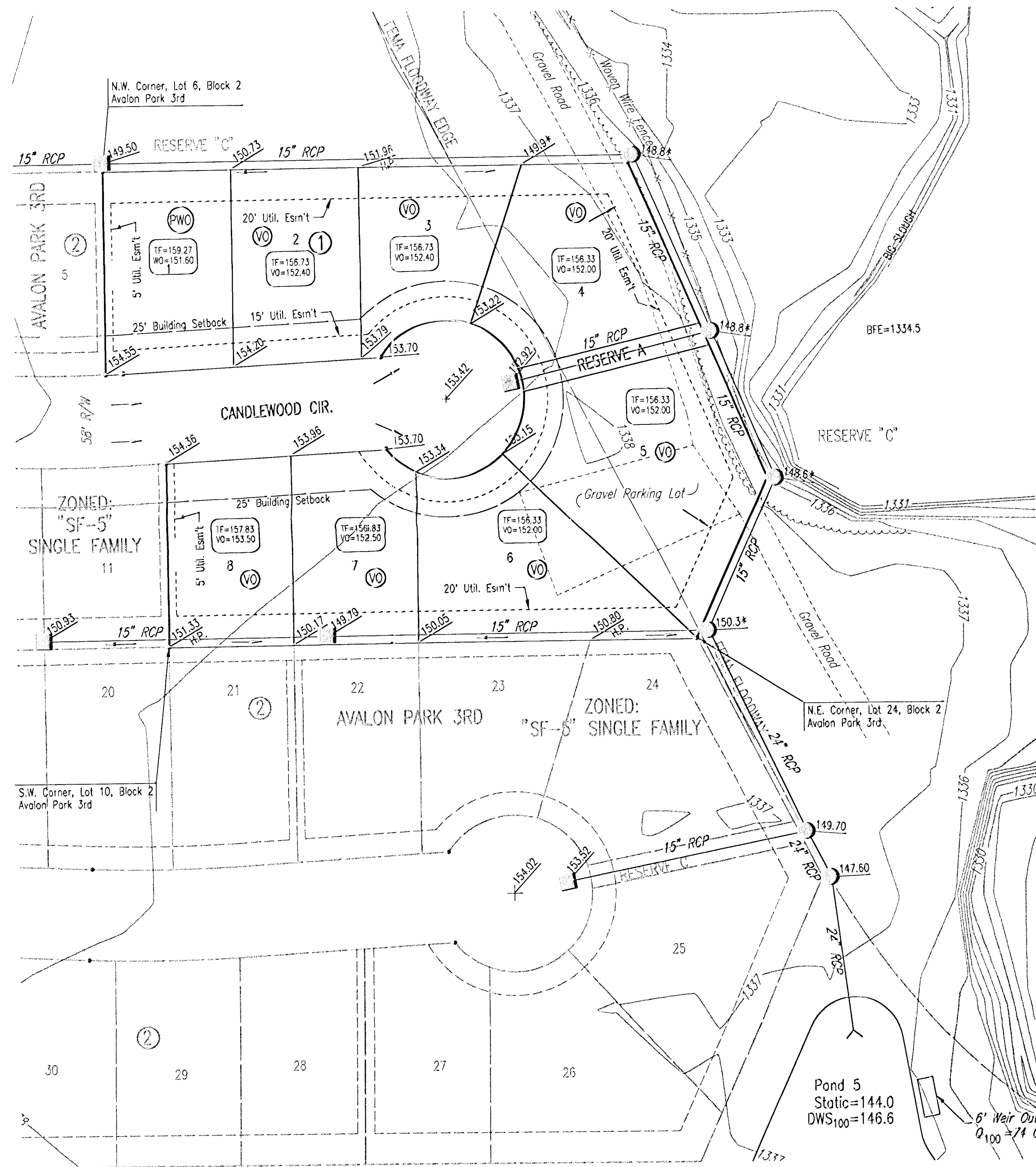


FOUR CORNER PLAN FOR
AVALON PARK 4TH
 AN ADDITION TO WICHITA,
 SEDGWICK COUNTY, KANSAS



SCALE: 1" = 50'

• 1/2" REBAR W/PEC CAP UNLESS OTHERWISE NOTED

BENCHMARKS:

- BM #55 - R.R. Spike in E. face Power Pole W. side Tyler Rd. at House #3915
Elev.=1340.28 N.G.V.D.
Elev.=152.88 CITY DATUM
- BM #56 - R.R. Spike in E. face Power Pole W. side Tyler Rd. 2nd Pole S. of R.R. Tracks
Elev.=1339.98 N.G.V.D.
Elev.=152.58 CITY DATUM
- BM #57 - Chiseled "5" on S. end RCP at entrance to "the edge" Paintball Adventures, E. side Tyler Rd. between R.R. Tracks and K96 Highway.
Elev.=1340.74 N.G.V.D.
Elev.=153.34 CITY DATUM
- BM #58 - Chiseled "5" on S. end concrete headwall, E. end RCB under Tyler Rd. at 1/2 mile line, S. of K96 Highway.
Elev.=1342.03 N.G.V.D.
Elev.=154.6.3 CITY DATUM

DATE OF PREPARATION: JUNE 6, 2006
 DATE OF TOPOGRAPHIC SURVEY: NOVEMBER 10, 2004
 OWNER: AVALON PARK, LLC
 7926 W. 21ST ST. N., STE. 200
 WICHITA, KANSAS 67205
 SUBDIVIDER: PROFESSIONAL ENGINEERING CONSULTANTS, P.A.
 303 S. TOPEKA
 WICHITA, KS 67202

NOTE: PROPOSED ELEVATIONS ARE SHOWN IN CITY OF WICHITA VERTICAL DATUM. EXISTING ELEVATIONS ARE SHOWN IN NGVD29 VERTICAL DATUM, CONVERSION: NGVD29-1187.4= C.O.V.DATUM

LEGEND

- MINOR STORM WATER FLOW (Q2)
- 152.01 SPOT ELEVATION
- 152.01 HP HIGH POINT ELEVATION
- 152.04* MATCH EXISTING ELEVATION
- STORM SEWER AND INLET
- STORM SEWER AND MANHOLE
- (VO) VIEW-OUT BASEMENT
- (WO) WALK-OUT BASEMENT
- (X) STANDARD BASEMENT
- (PWO) POSSIBLE WALK-OUT BASEMENT
- (PVO) POSSIBLE VIEW-OUT BASEMENT

MINIMUM OPENINGS	ELEVATION (N.G.V.D.)	City Datum
BLOCK 1		
LOTS 1-8	1338.00	151.60

