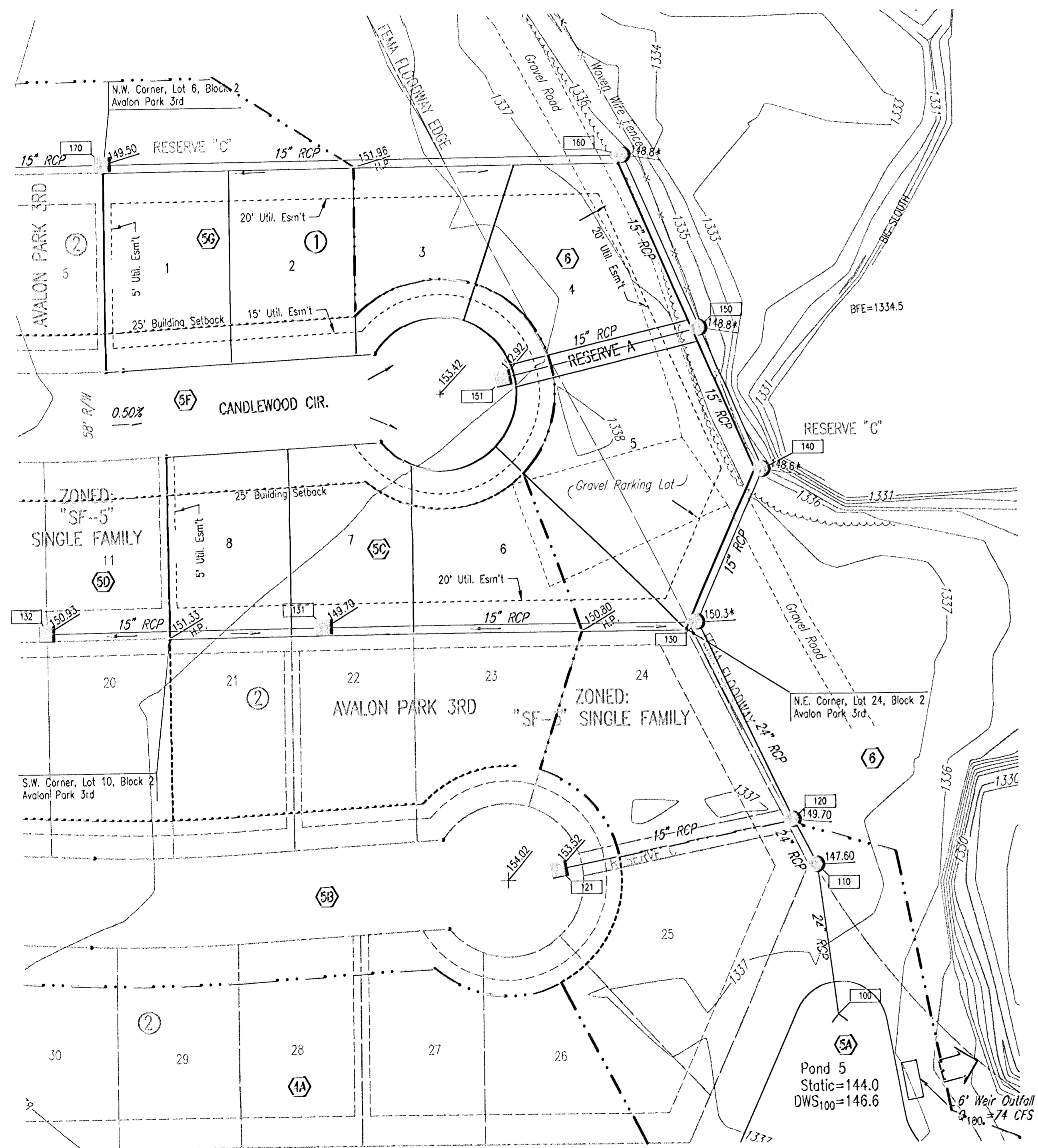


DRAINAGE PLAN FOR
AVALON PARK 4TH
AN ADDITION TO WICHITA,
SEDGWICK COUNTY, KANSAS



SCALE: 1" = 50'

• 1/2" REBAR W/PEC CAP UNLESS OTHERWISE NOTED

BENCHMARKS:

- BM #55 - R.R. Spike in E. face Power Pole W. side Tyler Rd. at House #3915
Elev.=1340.28 N.G.V.D.
Elev.=152.88 CITY DATUM
- BM #56 - R.R. Spike in E. face Power Pole W. side Tyler Rd. 2nd Pole S. of R.R. Tracks
Elev.=1339.98 N.G.V.D.
Elev.=152.58 CITY DATUM
- BM #57 - Chiseled "d" on S. end RCP at entrance to "the edge" Paintball Adventures, E. side Tyler Rd. between R.R. Tracks and K96 Highway.
Elev.=1340.74 N.G.V.D.
Elev.=153.34 CITY DATUM
- BM #58 - Chiseled "d" on S. end concrete headwall, E. end RCB under Tyler Rd. at 1/2 mile line, S. of K96 Highway.
Elev.=1342.03 N.G.V.D.
Elev.=154.63 CITY DATUM

LEGEND

- (A) BASIN IDENTIFIER
- MAJOR BASIN BOUNDARY
- - - MINOR BASIN BOUNDARY
- MAJOR STORM WATER OVERFLOW (Q100)
- MINOR STORM WATER FLOW (Q2)
- 130 NODE IDENTIFIER
- 152.01 SPOT ELEVATION
- 152.01 HP HIGH POINT ELEVATION
- STORM SEWER AND INLET
- STORM SEWER AND MANHOLE

DATE OF PREPARATION: JUNE 5, 2006

DATE OF TOPOGRAPHIC SURVEY: NOVEMBER 10, 2004

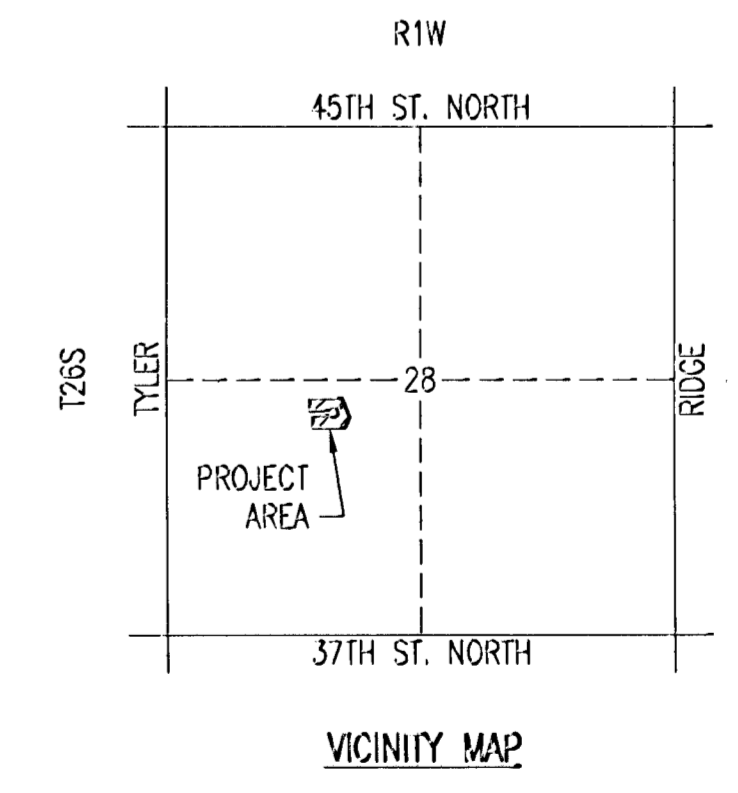
OWNER: AVALON PARK, LLC
7926 W. 21ST ST. N., STE. 200
WICHITA, KANSAS 67205

SUBMITTER: PROFESSIONAL ENGINEERING CONSULTANTS, P.A.
303 S. TOPEKA
WICHITA, KS 67202

MINIMUM OPENINGS	ELEVATION (N.G.V.D.)	City Datum
BLOCK 1		
LOTS 1-8	1338.00	150.60

NOTE:
REFER TO AVALON PARK 3RD ADDITION DRAINAGE PLAN AND SUPPORTING CALCULATIONS FOR HYDROLOGY.
THE LAYOUT OF STORM SEWER SYSTEM LINE #1 HAS BEEN ALTERED WITH THE ADDITION OF 2 LOTS.
ATTACHED ARE THE STORM SEWER CALCULATIONS AND AN UPDATED VERSION OF PEC'S STORM COMPUTER PROGRAM.
BY INSPECTION, THE DRAINAGE BASINS DID NOT CHANGE SIGNIFICANTLY FROM THE AVALON PARK 3RD DRAINAGE PLAN. DETENTION FOR THE PROPOSED ADDITION IS INCLUDED IN THE AVALON PARK 3RD DRAINAGE PLAN.

NOTE: PROPOSED ELEVATIONS ARE SHOWN IN CITY OF WICHITA VERTICAL DATUM. EXISTING ELEVATIONS ARE SHOWN IN NGVD29 VERTICAL DATUM, CONVERSION: NGVD29-1187.4= C.O.W.DATUM



Saved: 06-22-2006 1:36:08 PM by JAT
 Plot Scale: 1:50 05-22-2006 2:37:25 PM by JAT
 C:\2006\062624\LD\Draws\062624-Prelim_Drainage