

# SKETCH PLAT BAHA'I ADDITION

## WICHITA, SEDGWICK COUNTY, KANSAS

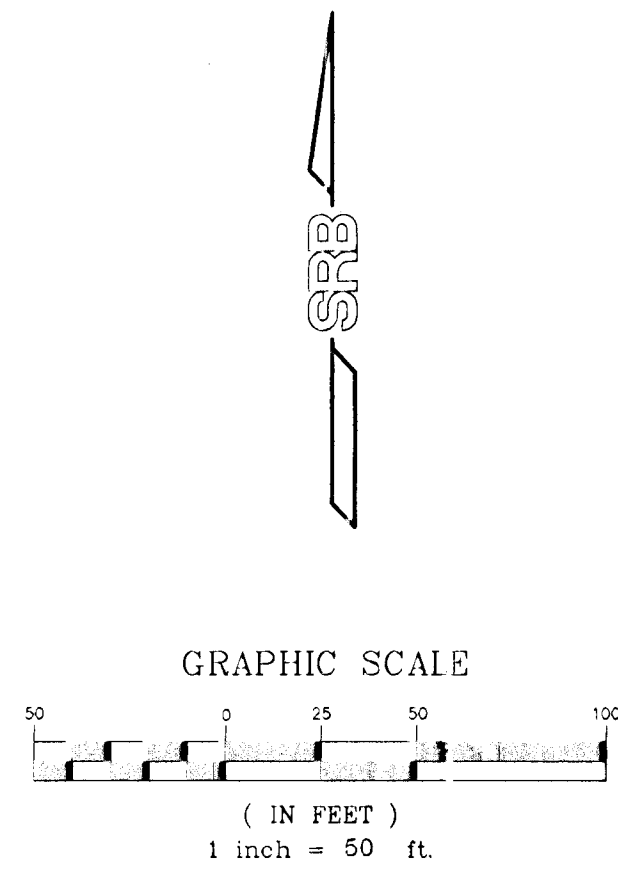
**LEGAL DESCRIPTION:**

That part of the South 2 acres of the North 6 acres of Lot 12, Russell Tracts, Sedgwick County, Kansas, described as follows: Beginning at the S.E. Corner of said North 6 acres of Lot 12; thence West along the south line of said North 6 acres of Lot 12, a distance of 317.475 feet; thence North, 137.23 feet to the North line of the South 2 acres of the North 6 acres of said Lot 12; thence East along said line 317.375 feet to the East line of said Lot 12; thence South along said East line to Point of Beginning, Except the east 40 feet.

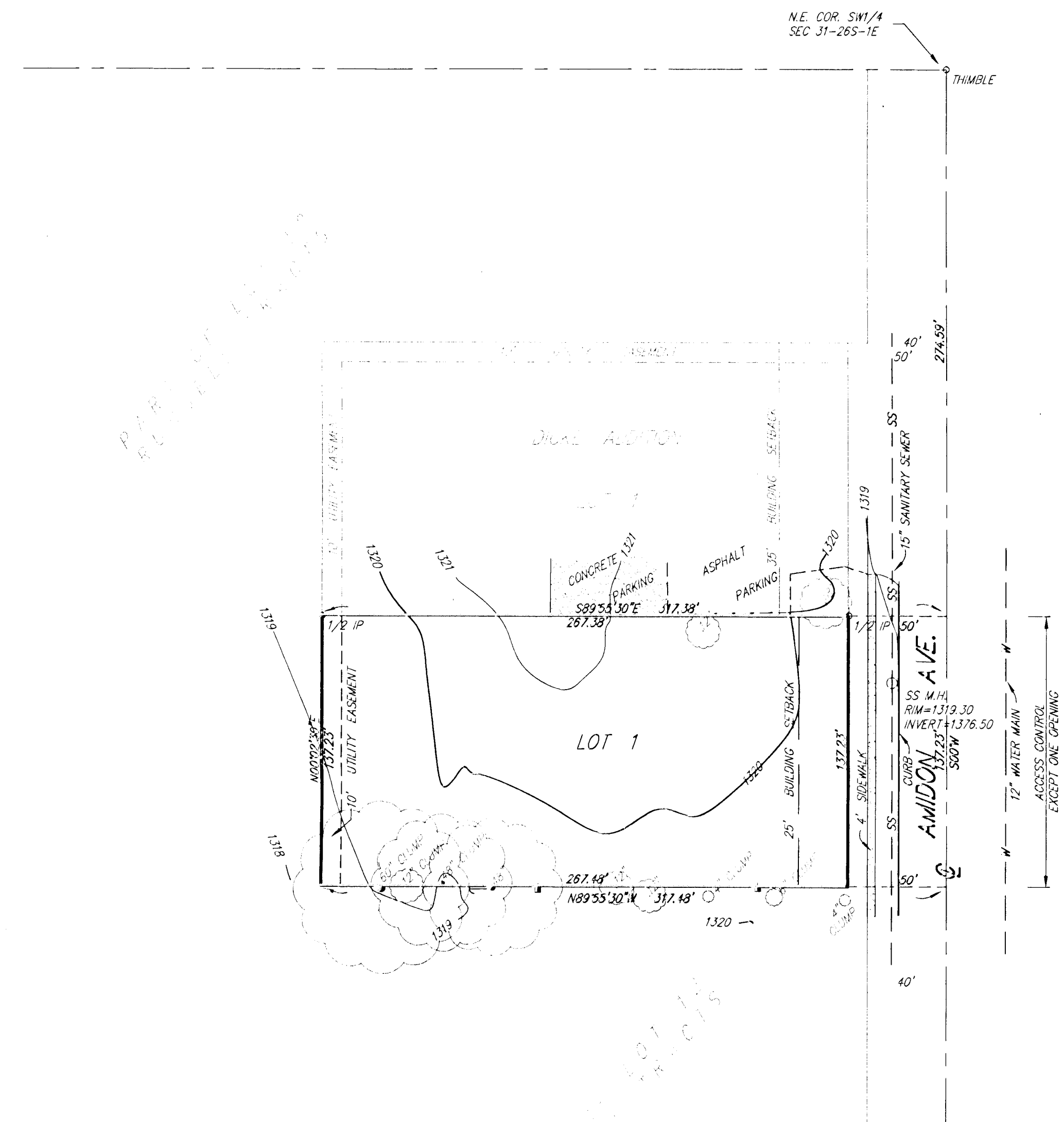
The Spiritual Assembly of The BAHAI of Wichita  
 ATTN: Richard Vore  
 4926 Port West Ct.  
 Wichita, Kansas 67204

GROSS SIZE:  
 38,077.86 Sq. Ft.±  
 0.87 Acres.±

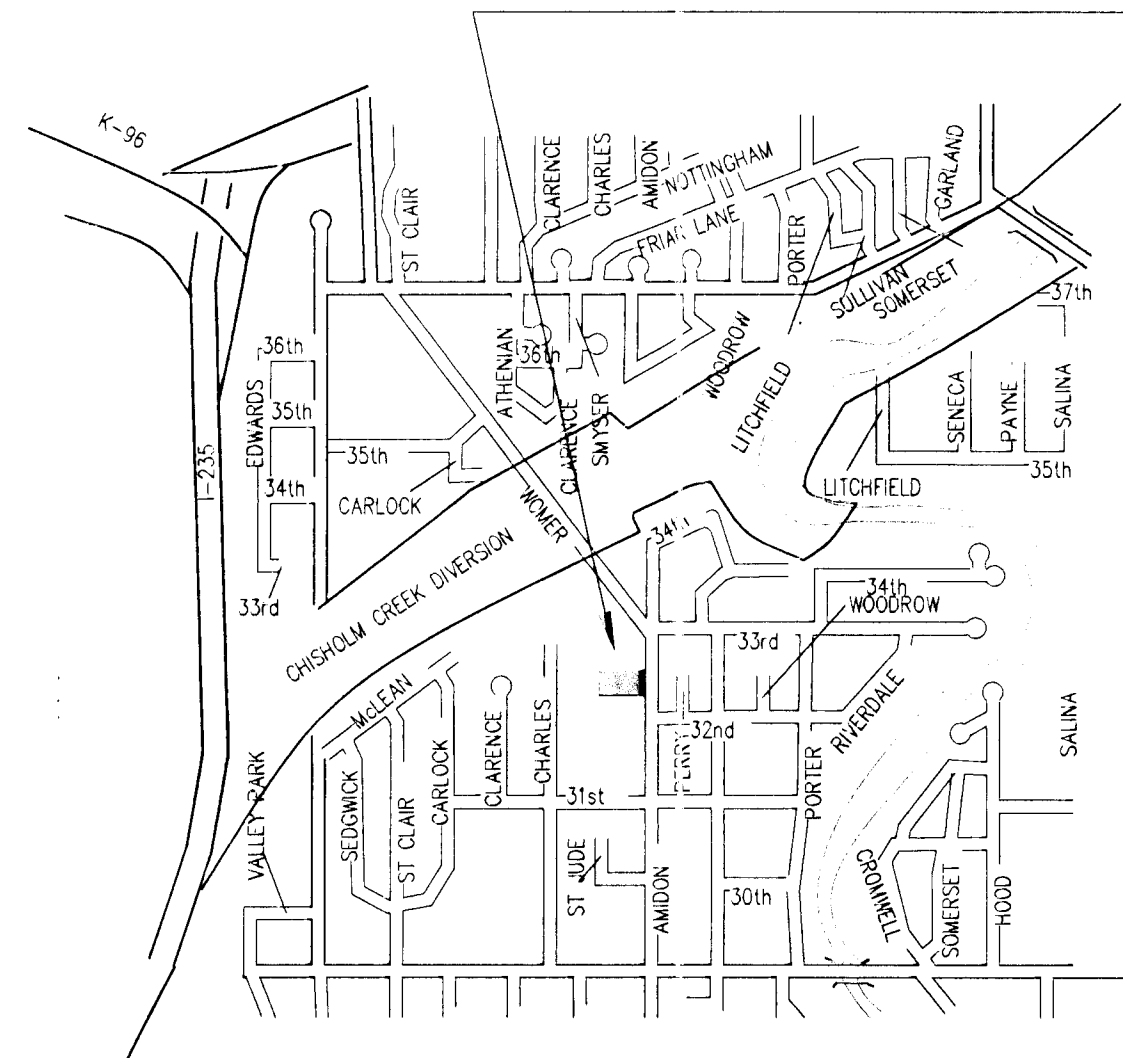
NET SIZE:  
 36,705.56 Sq. Ft.±  
 0.84 Acres.±



BENCH MARK: CITY OF WICHITA S17 DISC  
 42' E. & 34' N. OF CENTER LINE INTERSECTION  
 OF 33RD ST. N. & AMIDON  
 ELEV.=1318.76 (N.G.V.D.)



### BAHA'I ADDITION



VICINITY MAP

DWG FILE: 01504P-R.C.  
 PROJECT NO. 00801604P



924 NORTH MAIN  
 WICHITA, KANSAS 67203  
 http://www.feist.com/~srb

316-264-8008  
 FAX 264-4621  
 E-mail: srb@feist.com

**SAVOY, RUGGLES & BOHM, P.A.**  
 ENGINEERING & SURVEYING

16 MAR 00