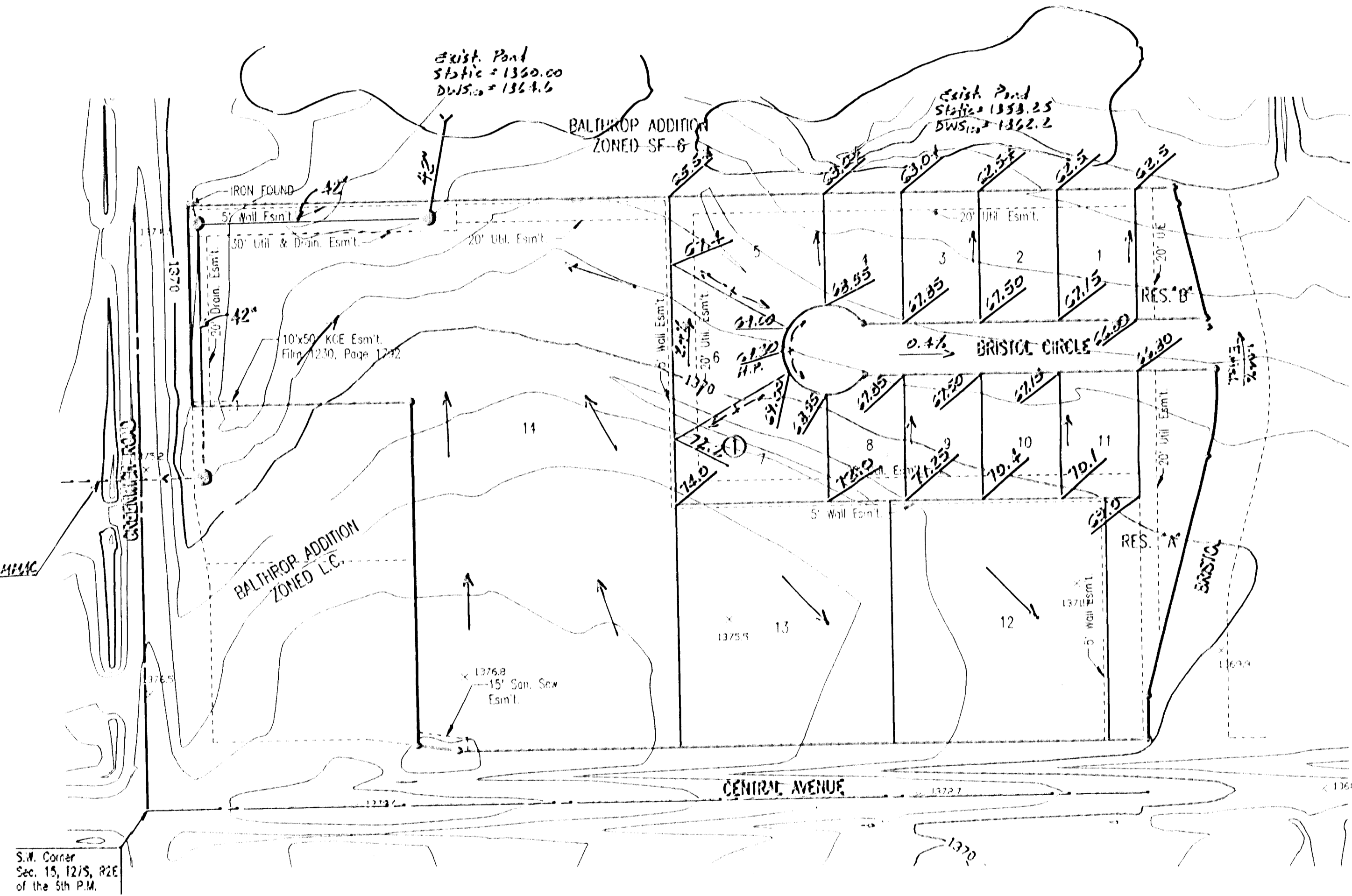


# DRAINAGE PLAN BALTHROP 2ND ADDITION TO WICHITA, SEDGWICK COUNTY, KANSAS

1. Reference Balthrop Addition Drainage Plan for hydrology and hydraulic computations.
2. Lots 12 & 13 shall drain to Central Ave. or Bristol Street via storm sewers, flumes, sheet flow, ditches, or other approved drainage measures.
3. Lot 14 shall be drained to proposed 42" SWS and inlets.
4. Commercial properties will not be permitted to drain across residential lots.

Exist. 36" x 66" CHEVAC  
D.A. = 37 Ac.  
Dia. = 10 cfs



SCALE: 1"=100'

IRON SET

B.S.L. = BUILDING SETBACK LINE  
C.A.C. = COMPLETE ACCESS CONTROL

B.M. - CHISELED "B" IN CENTER CONCRETE HEADWALL TO RCB  
24.5' SOUTH AND 56.7' WEST OF THE INTERSECTION  
OF THE CENTERLINES OF CENTRAL AND GREENWICH  
ELEV. = 138.828 CITY DATUM

### LEGEND

10.1 - 4-Corner Lot Elevation

→ - Flow Direction

⊙ - SWS MH or Inlet

Min. Pbd for Lot 14 = 1366.0  
Min. Pbd for Lots 1-5 = 1364.0