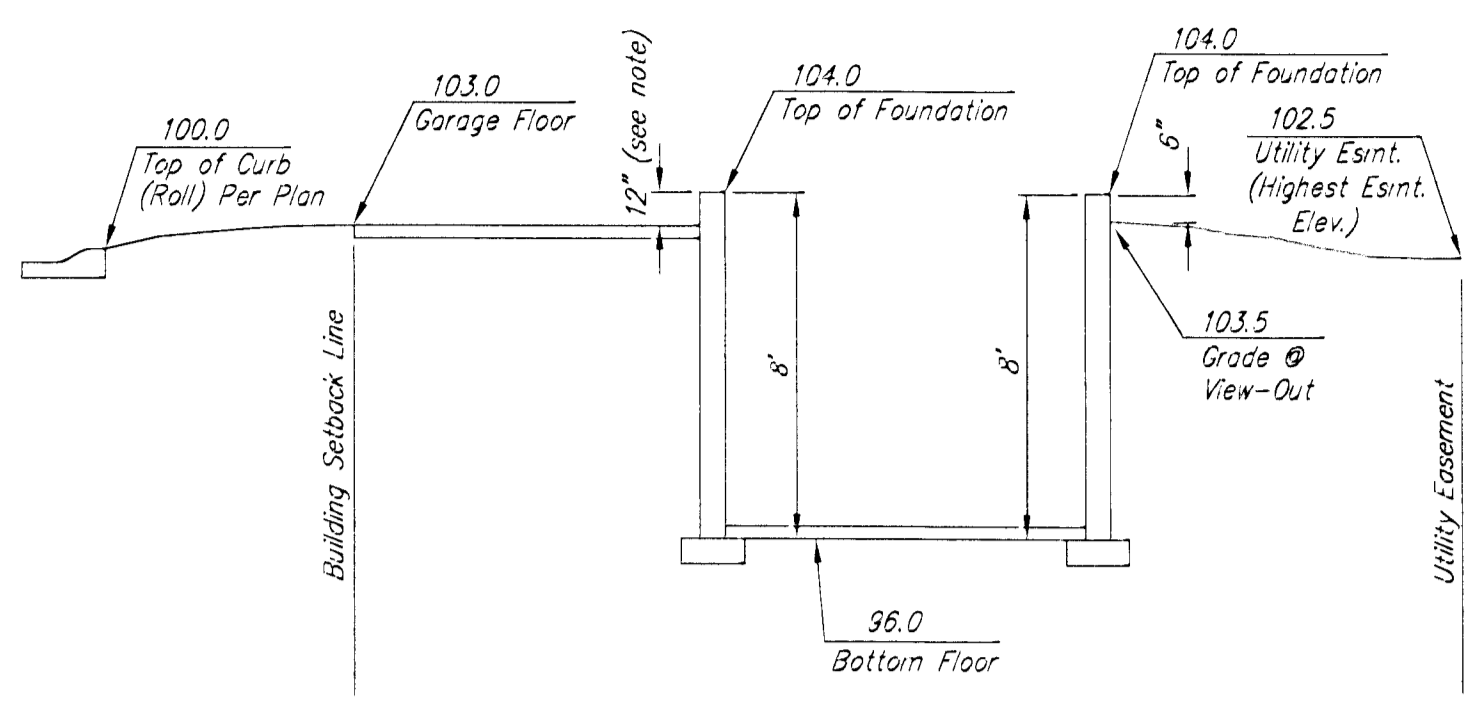
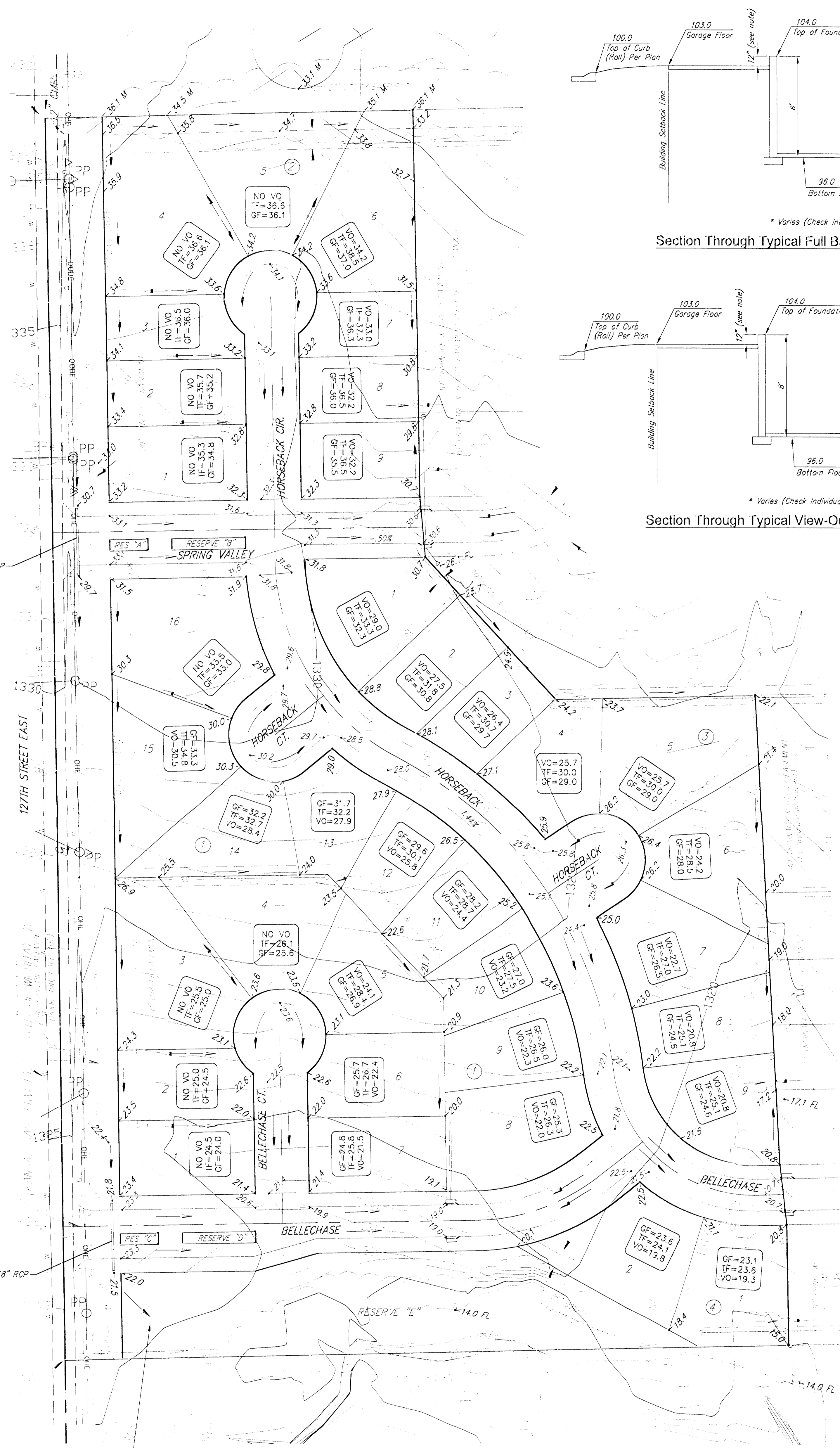


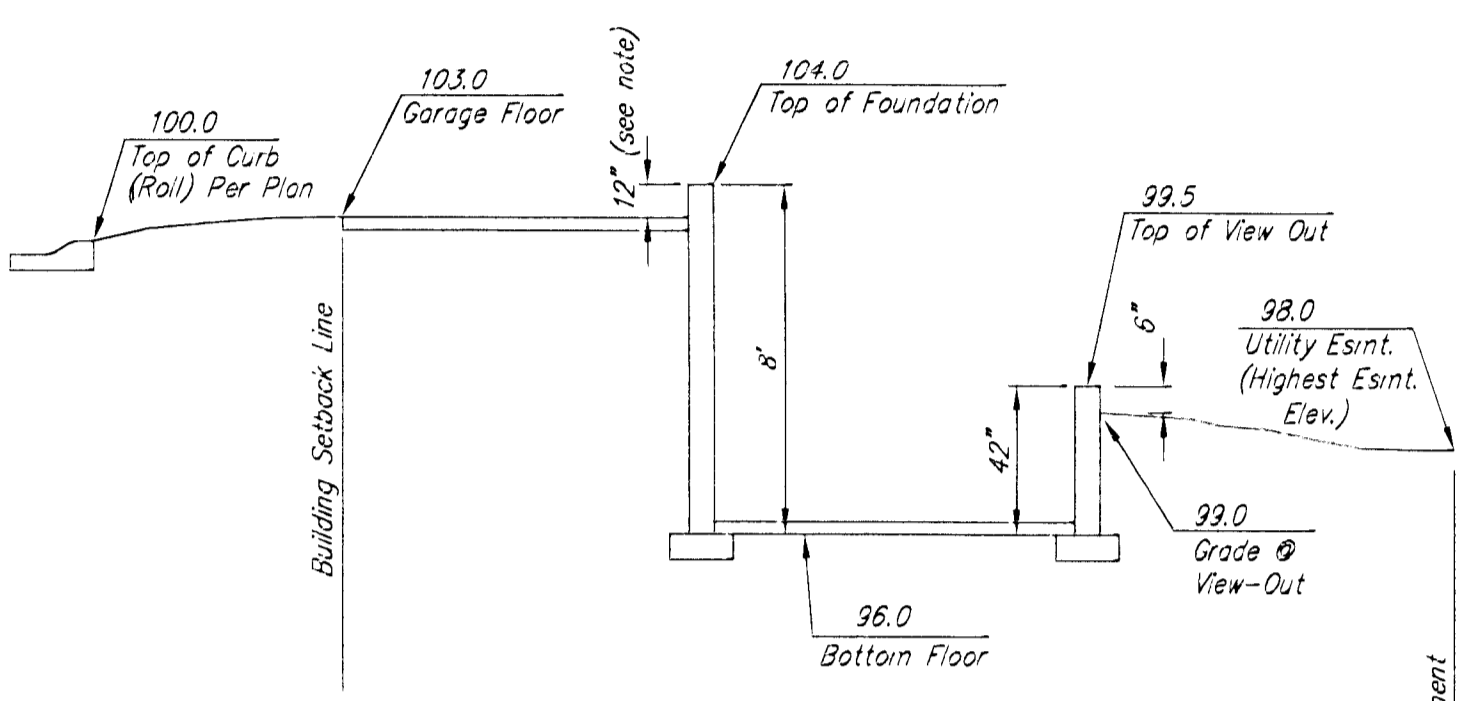
BELLECHASE

Subdivision Grading Plan

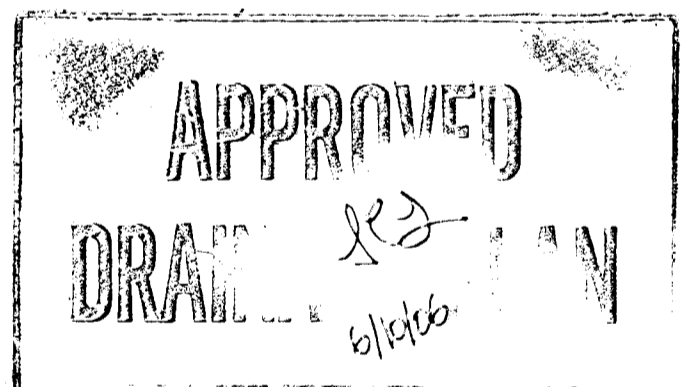
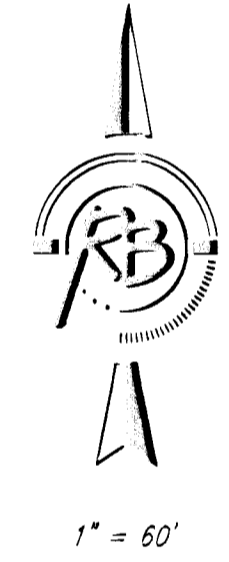
Wichita, Sedgwick County, Kansas



* Varies (Check Individual Lot)
Section Through Typical Full Basement



* Varies (Check Individual Lot)
Section Through Typical View-Out Lot



NOTE: GRADE DITCH TO DAYLIGHT IN AREA INDICATED. PROVIDE EROSION CONTROL MAT OR RIP-RAP AS NECESSARY TO PREVENT EROSION.

BENCH MARK:
RAILROAD SPIKE IN SOUTH FACE OF POWER POLE 72' SOUTH SOUTHEAST OF THE WEST QUARTER CORNER OF SEC. 26, 127S, R2E
ELEV.=1337.46 (NGVD)

- LEGEND
- Proposed Corner Grade
 - 69.5 Proposed Garage Floor
 - 70.0 Proposed Top of Foundation
 - 65.7 Proposed Viewout Elevation

REVISED May 29, 2006

BELLECHASE GRADING PLAN
WICHITA, KANSAS

Ruggles & Bohm, P.A.
Engineering, Surveying, Land Planning

924 North Main (316) 264-8008
Wichita, Kansas 67203 (316) 264-4621 fax
www.rbkansas.com E-mail: info@rbkansas.com

| | |
|---------------------------------|-----------------------|
| DESIGN: KWL | SHEET 1 OF 1 |
| DRAWN: KWL | |
| REVIEW: | |
| UTILITY: | |
| DRAWING FILE: kenbase [Layout!] | DATE: Mar. 28, 06 |