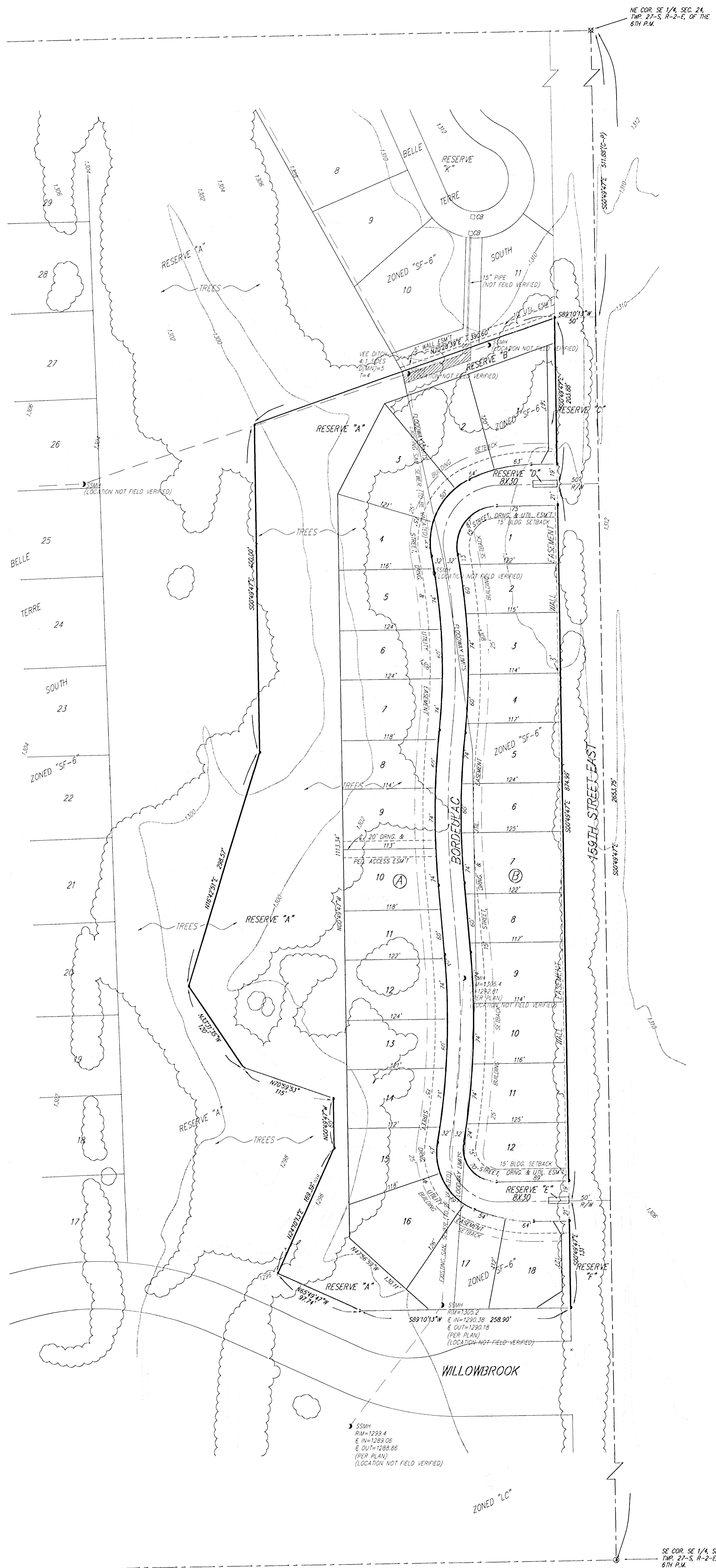


PRELIMINARY PLAT  
**BELLEVUE ADDITION**  
 AN ADDITION TO SEDGWICK COUNTY, KANSAS



NE COR. SE 1/4, SEC. 24,  
 TWP. 27-S, R-2-E, OF THE  
 6TH P.M.

**NOTE:**  
 RESERVE "A" IS RESERVED FOR FLOODWAY, LAKES, DRAINAGE,  
 SIDEWALKS, LANDSCAPES, BERMS, AND UTILITIES AS CONFINED  
 TO EASEMENTS.

RESERVE "B" IS RESERVED FOR DRAINAGE, SIDEWALKS,  
 LANDSCAPE AND UTILITIES AS CONFINED TO EASEMENTS.

RESERVE "C" & "D" ARE RESERVED FOR SCREENING WALLS,  
 ENTRY MONUMENTS, SIDEWALKS, LANDSCAPE, BERMS, AND  
 UTILITIES AS CONFINED TO EASEMENTS.

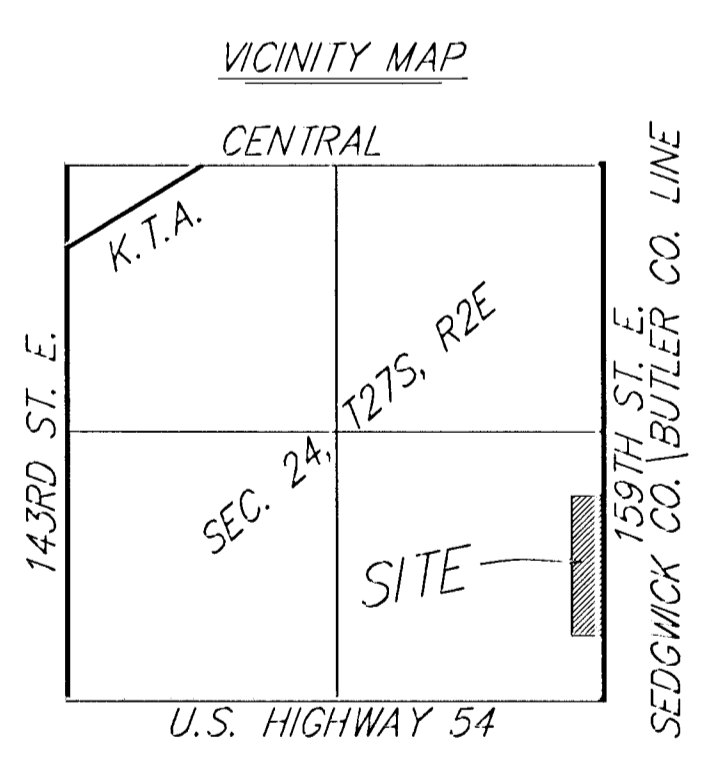
RESERVE "D" & "E" ARE RESERVED FOR STREETS, ENTRY  
 MONUMENTS, LANDSCAPING, AND UTILITIES.

**BENCHMARK:**  
 U.S.G.S. STANDARD TABLET 75' NORTH AND 42' EAST OF S.E.  
 CORNER SEC. 24, AT U.S. HIGHWAY 54 AND 159TH STREET  
 EAST.  
 ELEV. = 1301.83 M.S.L.

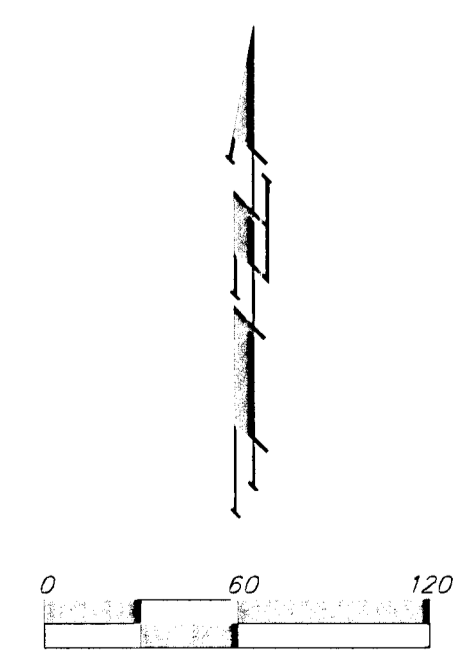
**LEGAL DESCRIPTION:**  
 REPLAT OF LOTS 12, 13, 14, 15, AND 16, BLOCK 3, BELLE  
 TERRE SOUTH, AN ADDITION TO SEDGWICK COUNTY, KANSAS.

**OWNER:**  
 GREGORY C. DOWNEY  
 833 N. WACO  
 WICHITA, KS 67203

**CONTRACT PURCHASER:**  
 K. TODD ALLAM  
 251 N. WATER  
 WICHITA, KS 67202



- CB = Catch Basin
- SSMH = Sanitary Sewer Manhole
- #4 REBAR W/ "BAUGHMAN" CAP
- 5/8" REBAR W/ TRIMBLE FOUND
- ⊗ 4x4 CONCRETE BLOCK FOUND
- (M) = MEASURED
- (D) = DESCRIBED
- (P) = PLATTED
- (C) = CALCULATED
- (C-P) = CALCULATED PER PLATTED INFO.



SE COR. SE 1/4, SEC. 24,  
 TWP. 27-S, R-2-E, OF THE  
 6TH P.M.

12 FEB 1999

**BAUGHMAN COMPANY P.A.**  
 ENGINEERING SURVEYING & PLANNING  
 315-282-7271 • 315 ELLIS • WICHITA, KANSAS 67211  
 P:\PLAT\SEC24.PDW:RKA