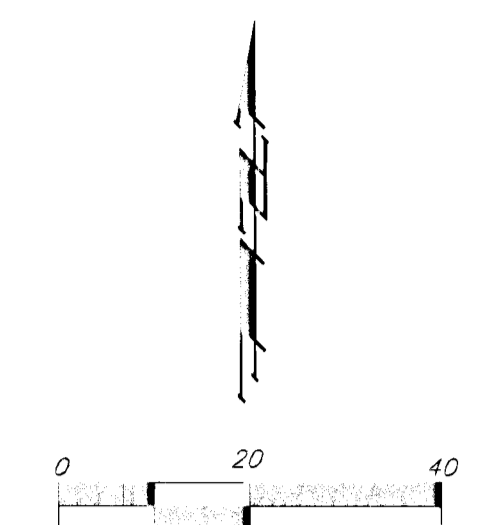


DRAINAGE CONCEPT BENCOR 2ND ADDITION WICHITA, SEDGWICK COUNTY, KANSAS

ZONED "LC"
LOT 2
DILLON
9TH ADDITION
RESERVE "A"

ROEMBACH'S 53 SUB-DIVISION ZONED "LC" MIDTOWN LOT 1 ADDITION
RESERVE "A" SHERWOODS ADDITION

NOTE: 8" CITY OF WICHITA WATER LINE ALONG THE NORTH SIDE OF 13TH STREET NORTH



- DPP = Dead Power Pole
- EB = Electric Box
- EM = Electric Meter
- GM = Gas Meter
- GT = Gas Test
- DU = Guard Post (Ballard)
- Guy = Guy Anchor
- LP = Light Pole
- MW = Monitoring Well
- PP = Power Pole
- Sign = Sign
- SSMH = Sanitary Sewer Manhole
- SWBMH = Southwestern Bell Manhole
- SWB Ped = Southwestern Bell Pedestal
- SWSMH = Stormwater Sewer Manhole
- T = Tree
- TM = Traffic Manhole
- WM = Water Meter
- WV = Water Valve

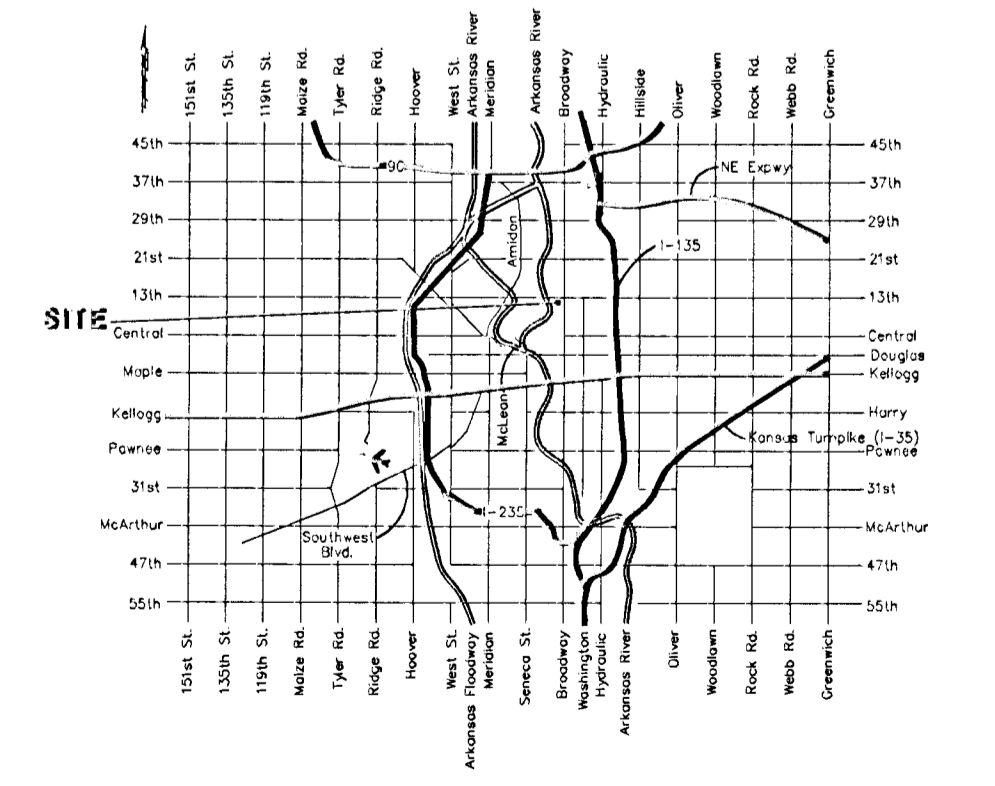
- ▲ = #4 REBAR W/ "BAUGHMAN" CAP (FOUND)
- = #4 REBAR W/ "BAUGHMAN" CAP (SET)
- = 3/4" IRON PIPE IN THIMBLE (FOUND)
- = #6 NAIL (FOUND)
- △ = 1/2" IRON PIPE IN THIMBLE (FOUND)
- × = CHISELED CROSS (SET)
- ∅ = 1/2" IRON PIPE (FOUND)

Drainage Area	Area (acres)	Cs	Cwo	Tc (min.)	I _s (in/hr)	I _w (in/hr)	Q _s (cfs)	Q _{wo} (cfs)
1	0.93	0.90	0.90	15	4.56	7.37	3.8	6.2
2	0.11	0.90	0.90	15	4.56	7.37	0.5	0.7
3	0.39	.90	.90	15	4.56	7.37	1.6	2.6
4	0.15	.90	.90	15	4.56	7.37	0.6	1.0

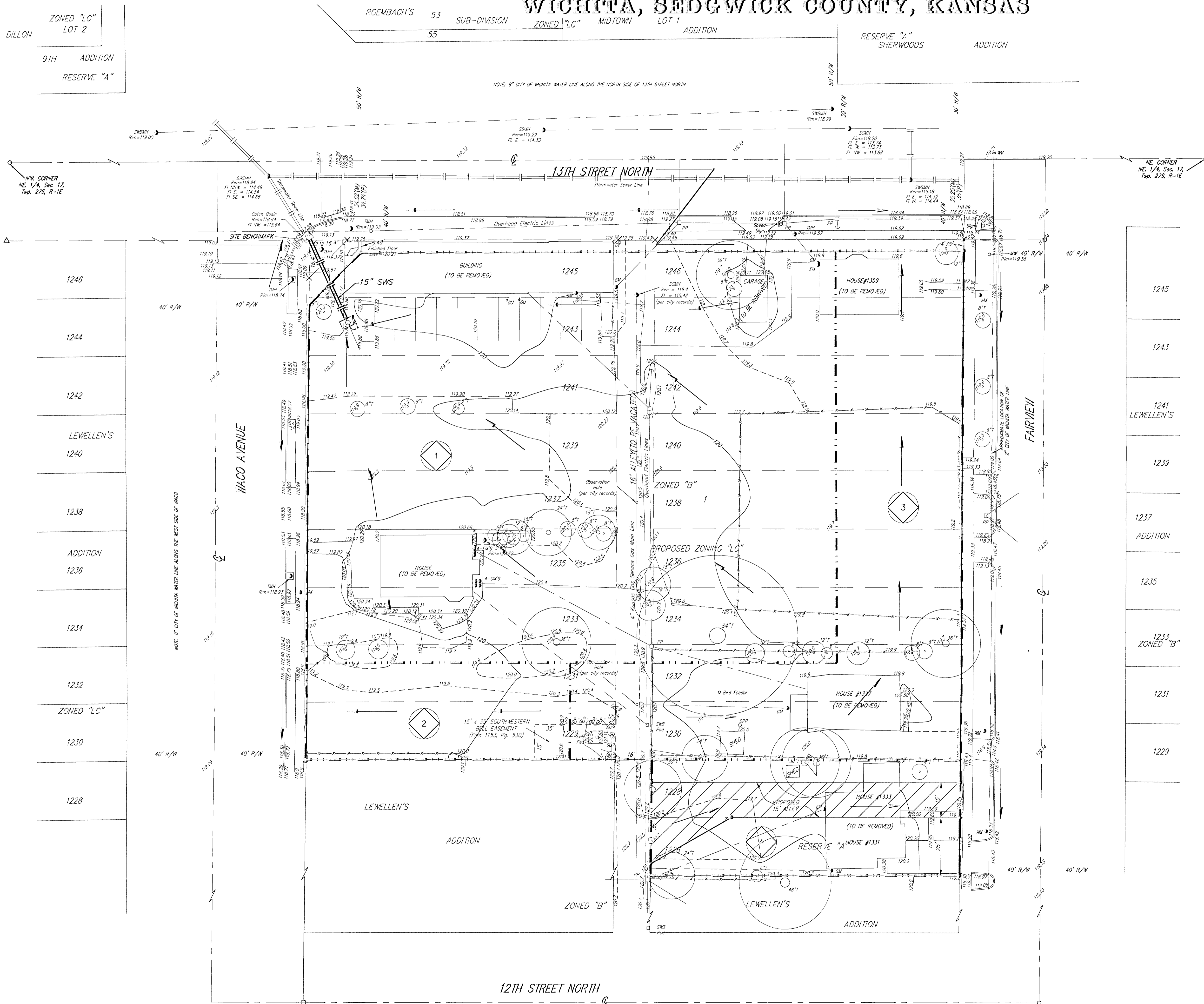
OWNER:
Bencor Properties, L.L.C.
Attn: Rex Morrison, P.E.
90 S. Cascade Avenue
Suite 330
Colorado Springs, CO 80903

LEGAL DESCRIPTION:
Lots 1229 through 1245 odd inclusive
on Waco Street together with Lots 1226
through 1246 even inclusive on Wichita
Street all in Lewellen's Addition, Wichita,
Kansas.

BENCHMARK: Chiseled Cross at the NW
corner of Lot 1245.
Elevation = 118.84 (City Datum)



RESERVE "A" IS RESERVED FOR OPEN SPACE,
SCREENING WALLS, LANDSCAPING, BERMS,
GARAGES, AND RESIDENTIAL USES.



NOTE: 8" CITY OF WICHITA WATER LINE ALONG THE WEST SIDE OF WACO

12TH STREET NORTH

7 MARCH 2000