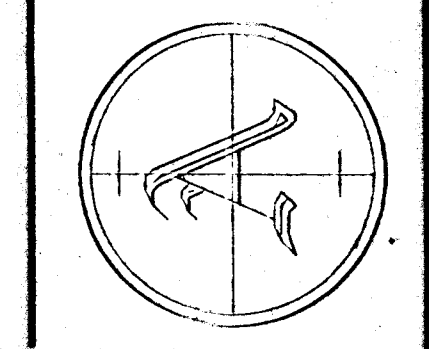


250 W. THIEWSON
 WICHITA, KS 67214
 PH. (316) 268-0082
 FX. (316) 268-0092

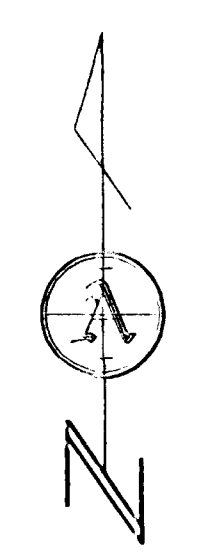
ARMSTRONG LAND SURVEY, P.A.



BERRY ADDITION TO SEDGWICK COUNTY, KANSAS

OWNER: Walter Berry
 P.O. Box 829
 Wichita, KS 67201
 Zoning: SF-20

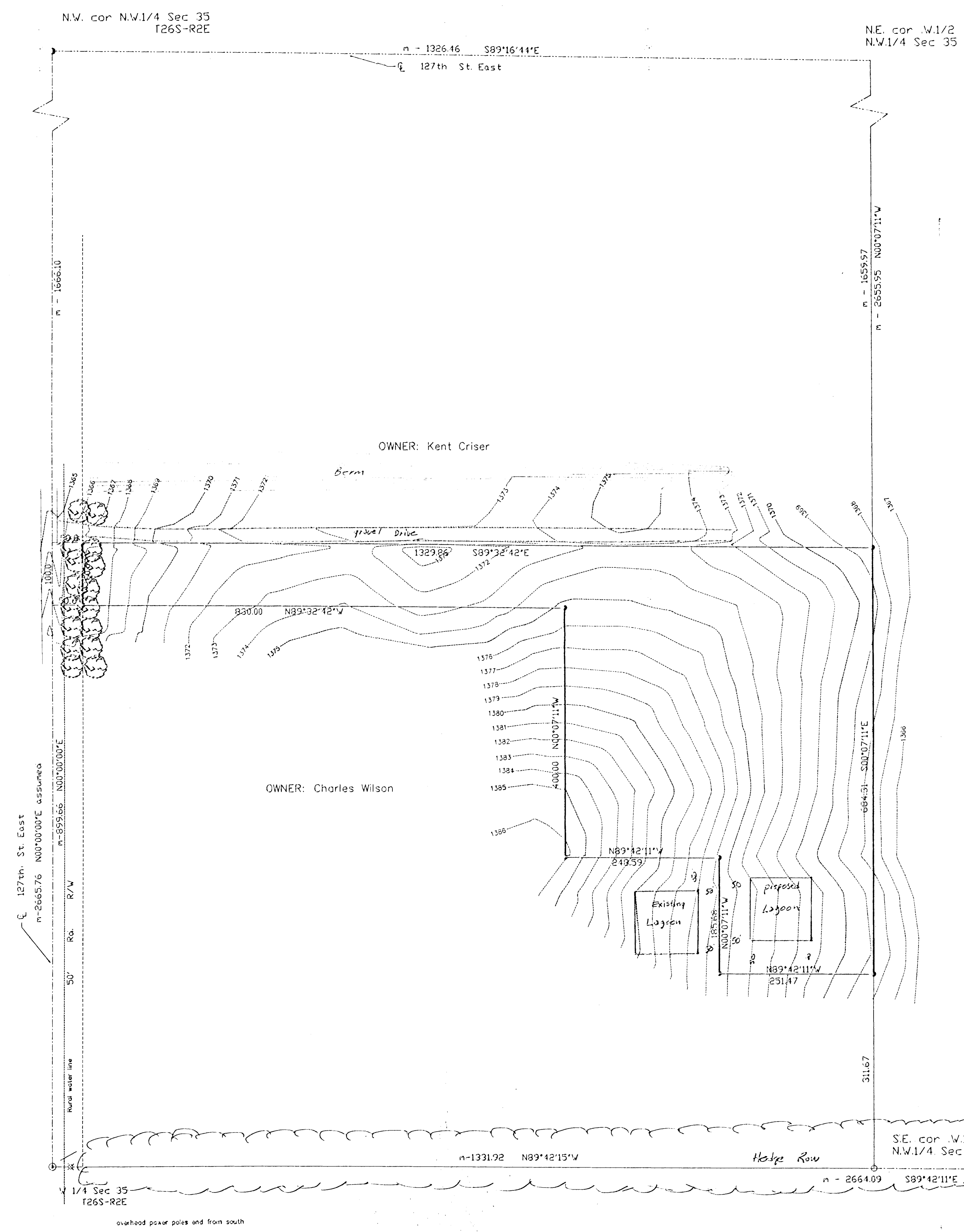
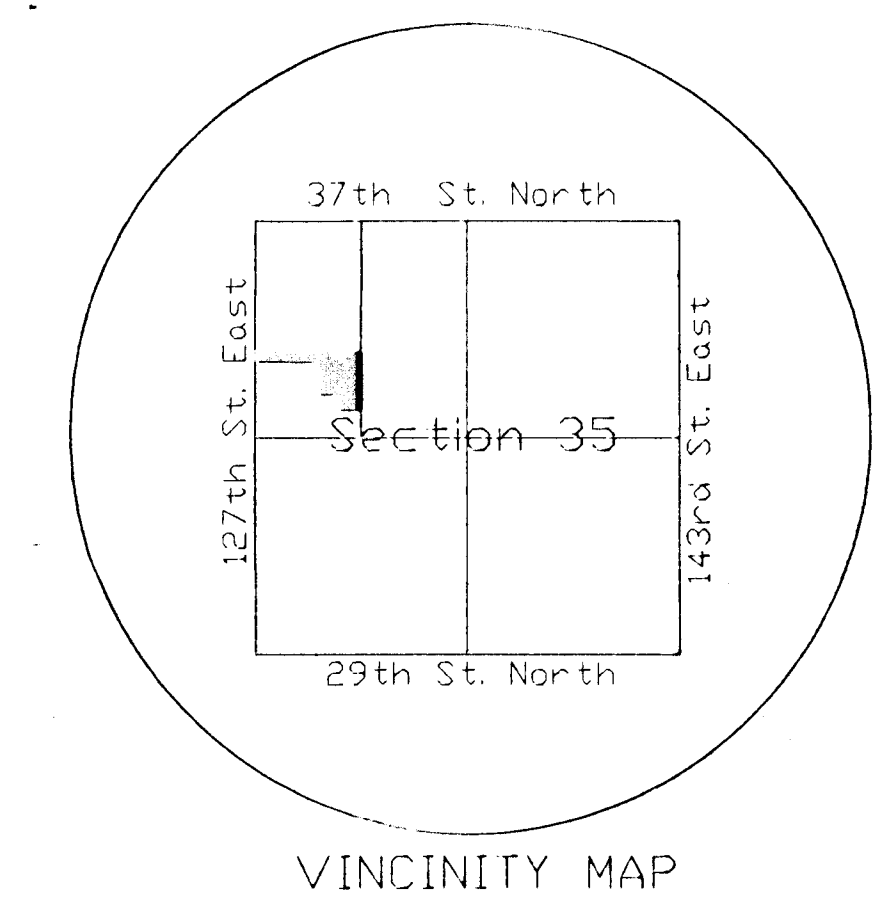
LEGEND



1"=100'

NOTE: Telephone and Electric lines are overhead.

- - 3/8" Armstrong capped rebar set
- ⊗ - 1.125" rebar found
- ⊙ - 3/4" iron pipe found
- - 1/2" iron pipe found
- - power pole
- - tele riser
- △ - water valve
- ⊙ - manhole
- ⊕ - gas meter
- ⊙ - sign
- — — — — property line
- — — — — center line
- — — — — easement line
- — — — — fence
- — — — — contour line



N.W. cor. N.W.1/4 Sec 35
 T26S-R2E

N.E. cor. N.W.1/2
 N.W.1/4 Sec 35

S.E. cor. N.W.1/2
 N.W.1/4 Sec 35

Center Sec 35
 T26S-R2E

overhead power poles and from south