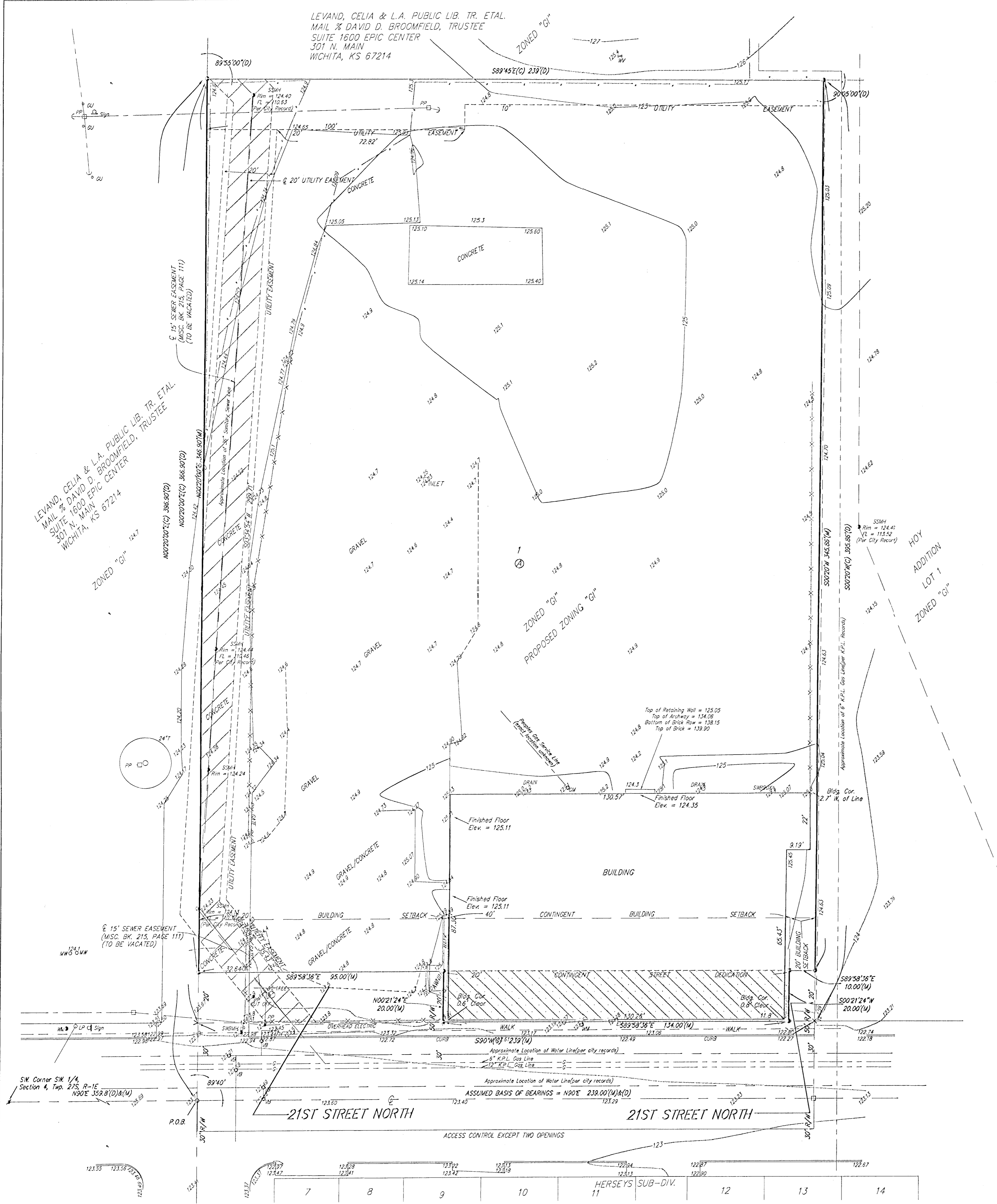


PRELIMINARY PLAT
BEST SUPPLY ADDITION
 WICHITA, SEDGWICK COUNTY, KANSAS



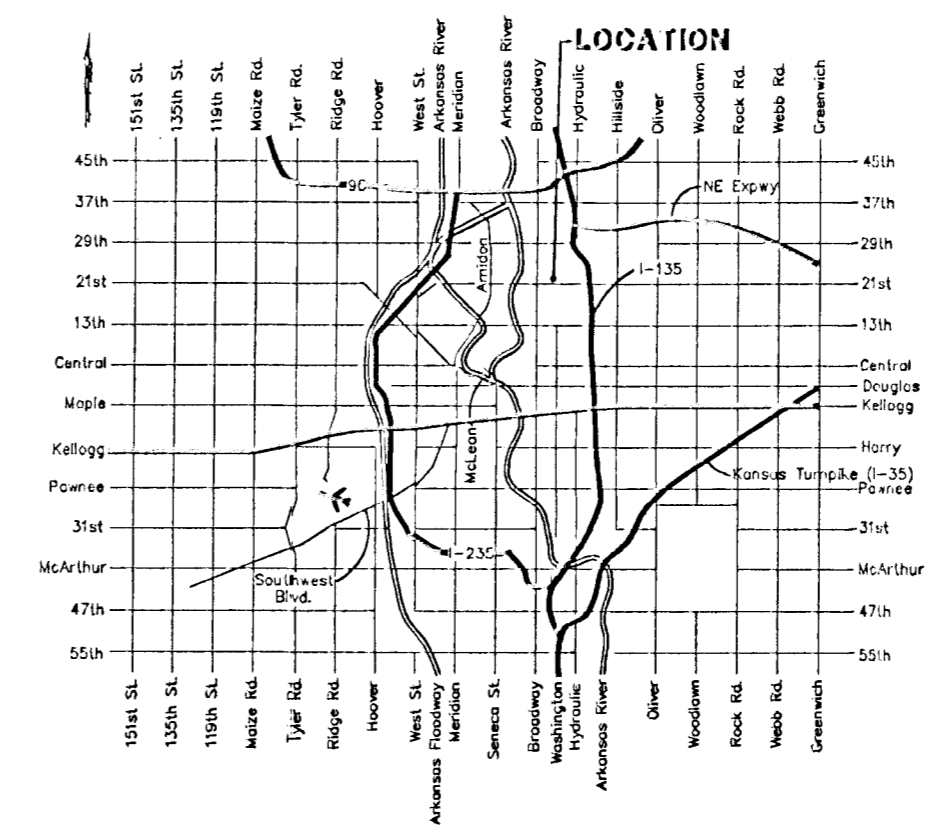
OWNER:
 Paul Suhr
 Best Supply Company, Inc.
 414 E. 21st Street
 Wichita, Kansas 67214

LEGAL DESCRIPTION:
 A tract in the S 1/2 of the SW 1/4 of the SW 1/4 of Sec. 4, Twp. 27-S, R-1-E, of the 6th P.M., Sedgwick County, Kansas, described as commencing at the SW Corner thereof; thence east along the south line of the S 1/2 of the SW 1/4 of said SW 1/4, 359.8 feet for a place of beginning; thence north with a deflection angle to the left of 89°40', 396.9 feet; thence east with a deflection angle to the right of 89°55', 239 feet; thence south with a deflection angle to the right of 90°05', 395.86 feet to a point on the south line of the S 1/2 of the SW 1/4 of said SW 1/4; thence west, 239 feet to the place of beginning.

BENCHMARK:
 Brass rod in Conc. post at N. end of traffic island 22' E. and 41.5' N. of thimble at Sec. Corner.
 ELEV = 124.71(City Datum)

0 20 40
 DATE OF PREPARATION: DECEMBER 22, 2000
 CONTOUR INTERVAL = 1 FOOT
 DATE OF TOPOGRAPHY: 25 OCTOBER 2000

- EB = Electric Box
- EM = Electric Meter
- GM = Gas Meter
- GP = Guard Post(Bollard)
- GA = Guy = Guy Anchor
- HLP = High Line Pole
- LP = Light Pole
- MB = Mail Box
- MW = Monitoring Well
- PP = Power Pole
- Q = Sign
- SWBMH = Southwestern Bell Manhole
- SWB Ped = Southwestern Bell Pedestal
- WM = Water Meter
- WV = Water Valve
- #4 REBAR W/"BAUGHMAN" CAP (SET)
- Concrete Nail Set
- Hill Nail Set
- Chiseled Cross Found
- Chiseled V-Notch
- 1/2" Iron Pipe in Thimble Found
- (M) = Measured
- (D) = Described
- (C) = Calculated



22 DECEMBER 2000