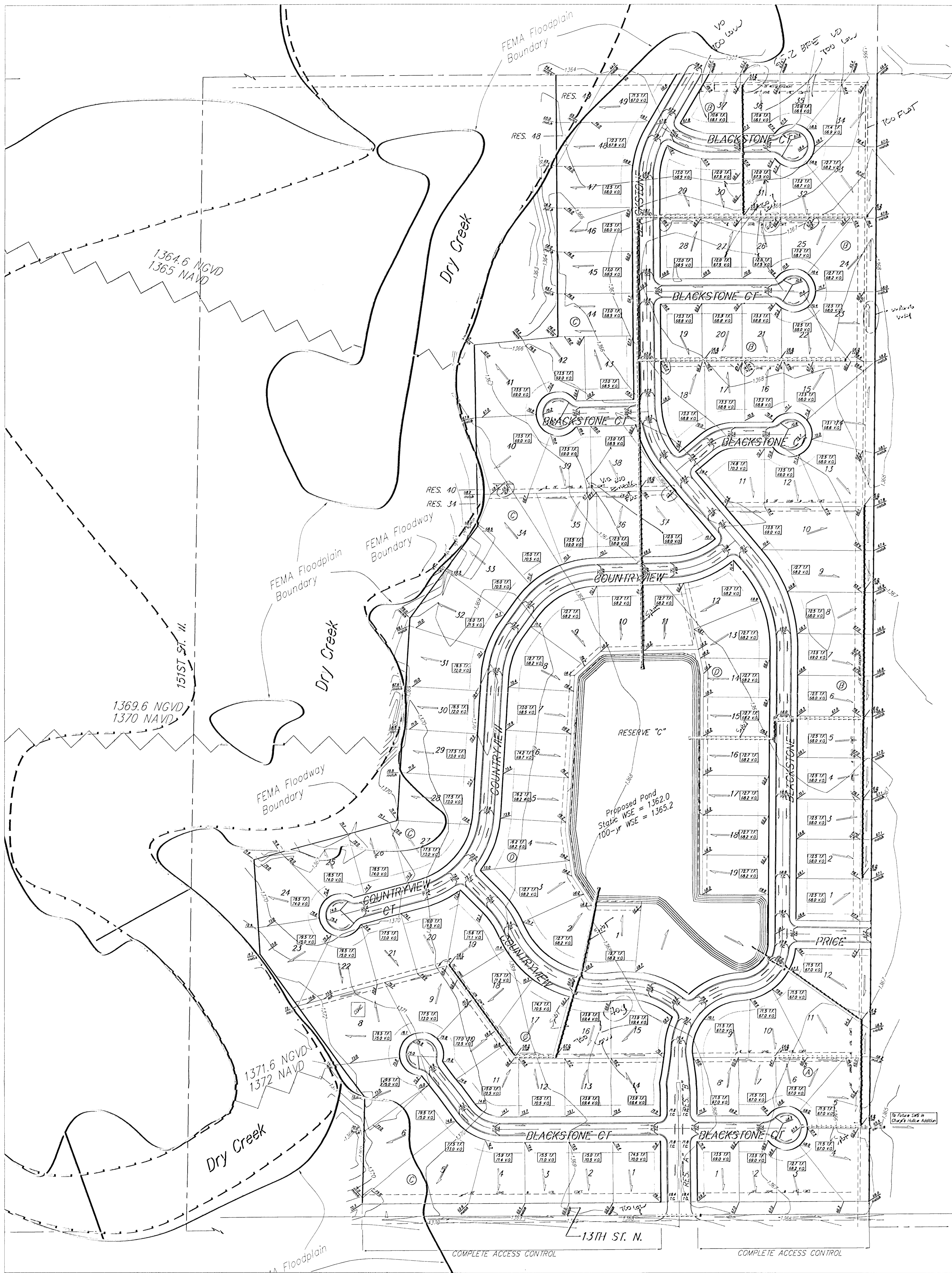
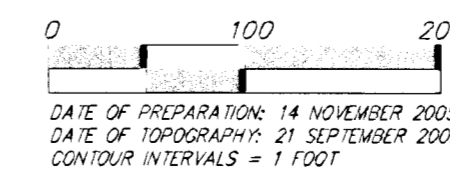
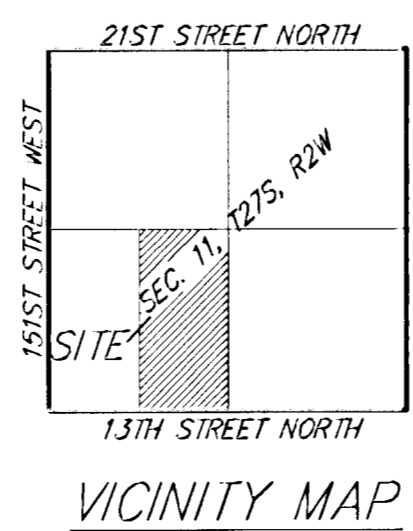


GRADING PLAN BLACKSTONE ADDITION WICHITA, SEDGWICK COUNTY, KANSAS



MINIMUM BUILDING PAD ELEVATIONS FOR LOWEST OPENING TO THE STRUCTURES		
LOT	BLOCK	ELEVATION
34-37	B	1366.1
5	C	1373.0
6-8, 22, 23	C	1375.0
24-26	C	1374.0
27-29	C	1373.0
30-31	C	1372.0
32-34	C	1370.5
35, 39-42	C	1369.0
43-45	C	1368.5
46-47	C	1368.0
48-49	C	1367.0
1-13	D	1368.2

NOTE: Floodway, Floodplain, and Base Flood Elevations are scaled per location per Preliminary FEMA FIRM Map Panel 310 of 700 for Sedgwick County, Kansas.



Baughman Company, P.A.
315 East St. Wichita, KS 67111 P 316.263.7271 F 316.263.0149
Baughman ENGINEERING | SURVEYING | PLANNING | LANDSCAPE ARCHITECTURE
F:\W2001\Projects\Blackstone\cwg\BlackstoneADD_dgn_14.cwg