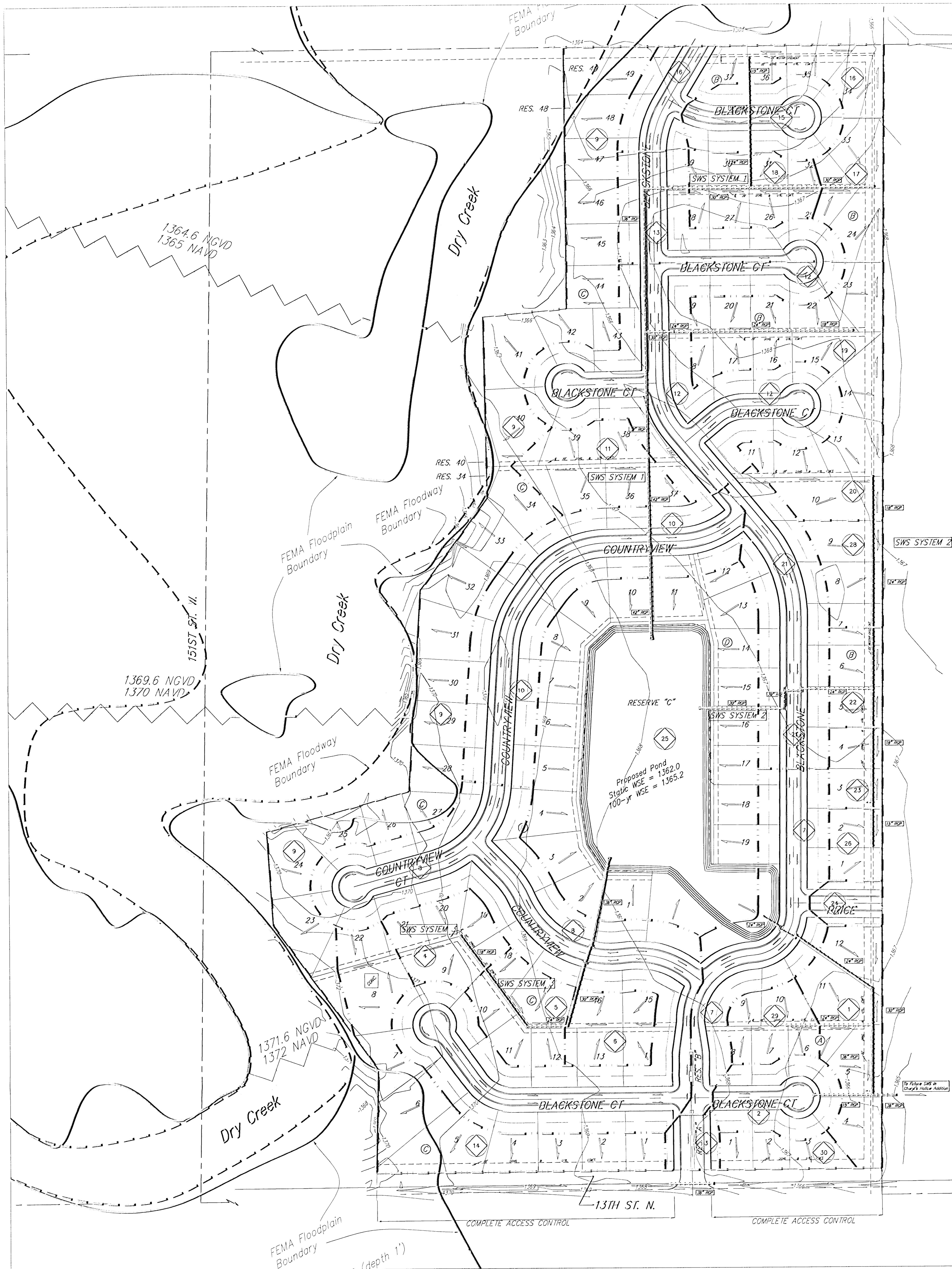
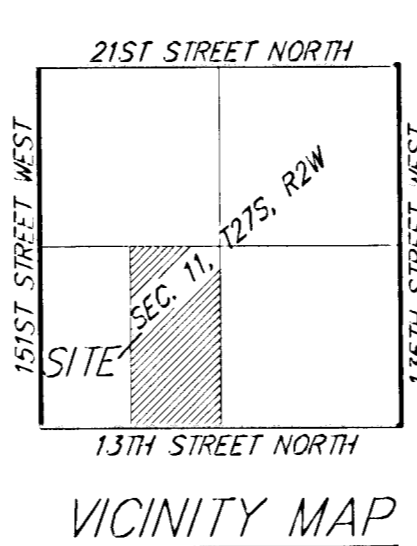


DRAINAGE PLAN BLACKSTONE ADDITION WICHITA, SEDGWICK COUNTY, KANSAS



LOT	BLOCK	ELEVATION
34-37	B	1368.1
5	C	1373.0
6-8, 22, 23	C	1375.0
24-26	C	1374.0
27-29	C	1373.0
30-31	C	1372.0
32-34	C	1370.5
35, 39-42	C	1369.0
43-45	C	1368.5
46-47	C	1368.0
48-49	C	1367.0
1-19	D	1368.2

NOTE: Floodway, Floodplain, and Base Flood Elevations are scaled per location per Preliminary FEMA FIRM Map Panel 310 of 700 for Sedgwick County, Kansas.



0 100 200
DATE OF PREPARATION: 14 NOVEMBER 2005
DATE OF TOPOGRAPHY: 21 SEPTEMBER 2005
CONTOUR INTERVALS = 1.00'

14 NOVEMBER 2005

Baughman Company, P.A.
315 E. 11th St., Wichita, KS 67211 P 316-262-7211 F 316-262-0149
ENGINEERING | SURVEYING | PLANNING | LANDSCAPE ARCHITECTURE

F:\HYDRO\Projects\Blackstone\eng\Blackstone400.dwg_16.dwg