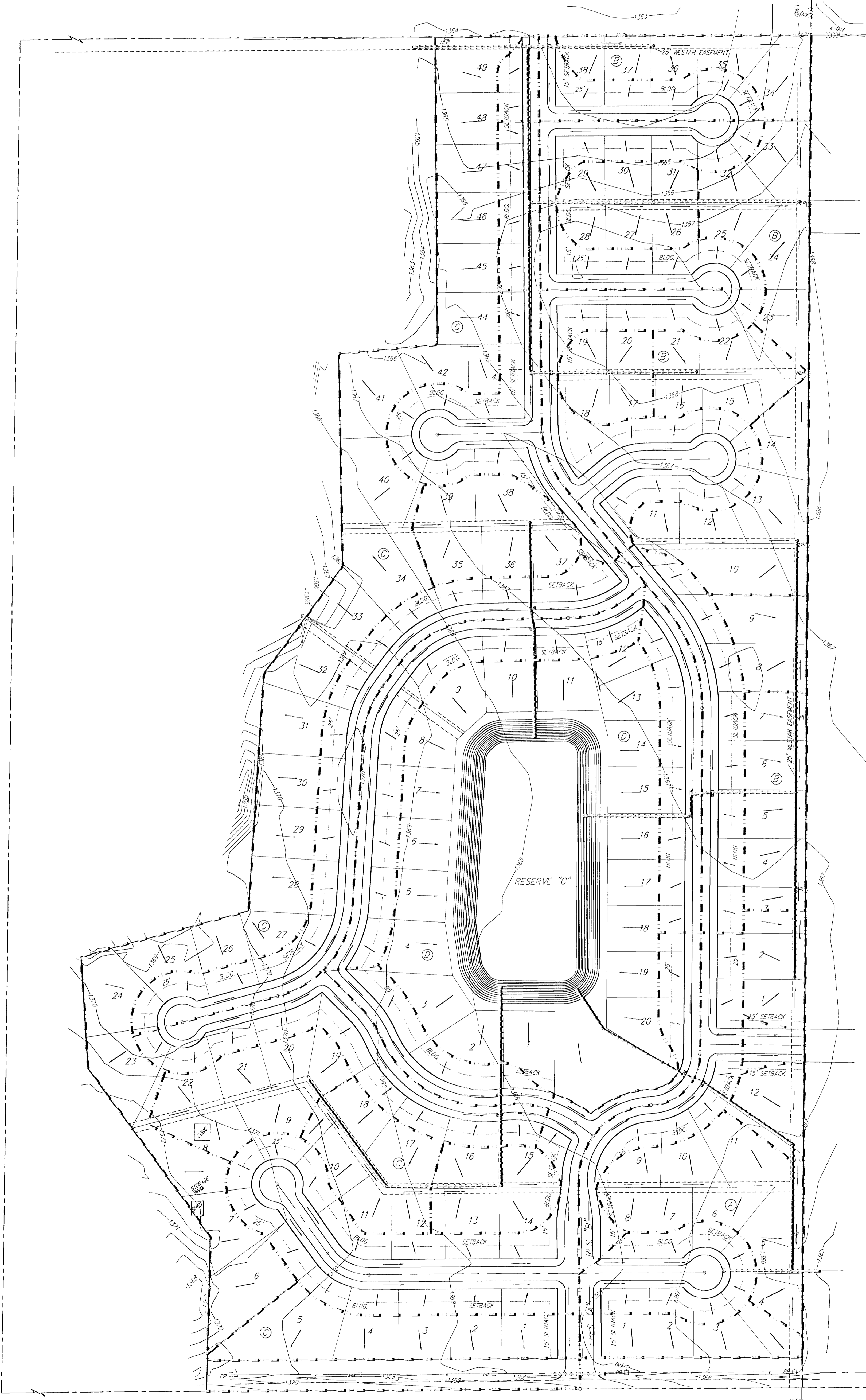
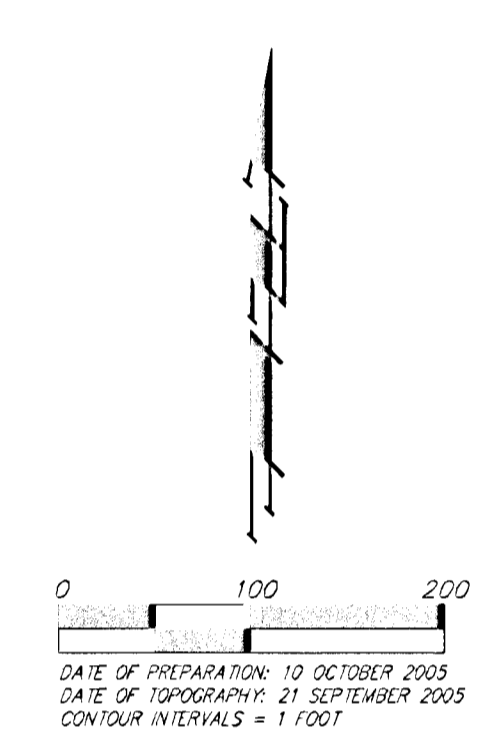


DRAINAGE CONCEPT
BLACKSTONE ADDITION
 WICHITA, SEDGWICK COUNTY, KANSAS

151ST ST. W.



131TH ST. N.



OWNER:
 CHRISTOPHER J. & REBECCA A. DUGAN
 1155 N. 135TH W.
 WICHITA, KS 67235

CONTRACT PURCHASER:
 KELSEY INVESTMENTS
 118 W. 19TH ST. W.
 WICHITA, KS 67235
 722-1077

LEGAL DESCRIPTION:
 That part of the SW 1/4 of Sec. 11, Twp. 27-S, R-2-W of the 6th P.M., Sedgewick County, Kansas described as follows: Beginning at the SE corner of said SW 1/4; thence S89°37'42"W along the south line of said SW 1/4, 1157.22 feet; thence N01°18'26"E, 300.28 feet; thence N35°57'09"W, 407.18 feet; thence N03°43'09"W, 217.53 feet; thence N74°45'00"E, 339.53 feet; thence N03°24'31"E, 463.07 feet; thence N36°13'57"E, 260.83 feet; thence N01°07'09"W, 413.54 feet; thence N84°33'27"E, 193.60 feet; thence N00°29'15"W, 529.25 feet to a point on the north line of said SW 1/4; thence N89°41'53"E along the north line of said SW 1/4, 730.08 feet to the NE corner of said SW 1/4; thence S00°21'50"W, 2636.36 feet to the point of beginning, all being subject to road rights-of-way of record.

BENCHMARK:

RESERVES "A" AND "B" ARE RESERVED FOR ENTRY MONUMENTS, LANDSCAPING, OPEN SPACE, STREETS, DRAINAGE PURPOSES, AND UTILITIES.

RESERVE "C" IS RESERVED FOR LANDSCAPING, LAKES, OPEN SPACE, DRAINAGE PURPOSES, SWIMMING POOL, RECREATIONAL USES, AND UTILITIES AS CONFINED TO EASEMENTS.

