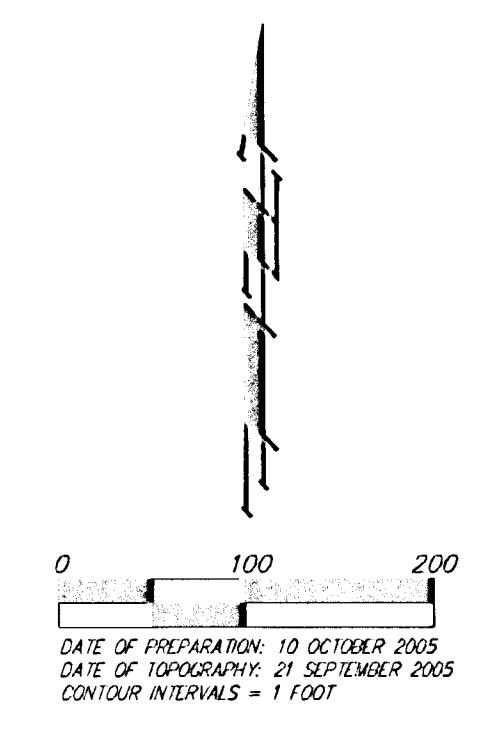
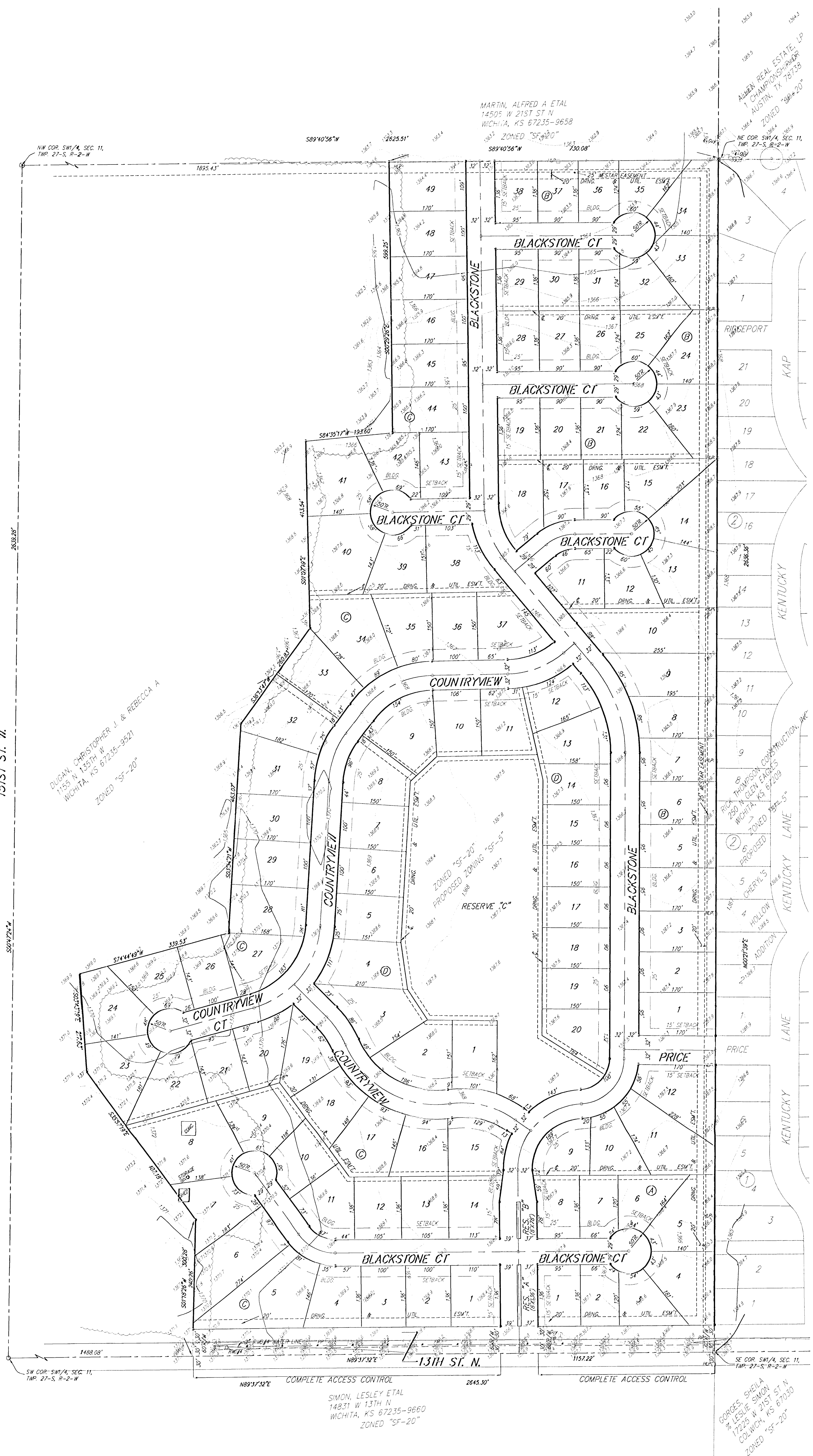


PRELIMINARY PLAT
BLACKSTONE ADDITION
 WICHITA, SEDGWICK COUNTY, KANSAS



OWNER:
 CHRISTOPHER J & REBECCA A DUGAN
 1155 N 135TH W
 WICHITA, KS 67235

CONTRACT PURCHASER:
 KELSEY INVESTMENTS
 716 N 119TH ST W
 WICHITA, KS 67235
 722-1077

LEGAL DESCRIPTION:
 That part of the SW 1/4 of Sec. 11, Twp. 27-S, R-2-W of the 6th P.M., Sedgwick County, Kansas described as follows: Beginning at the SE corner of said SW 1/4; thence S89°34'42" W along the south line of said SW 1/4, 1157.22 feet; thence N01°18'36" E, 300.28 feet; thence N35°57'09" W, 407.18 feet; thence N03°43'00" W, 217.63 feet; thence N74°45'00" E, 359.53 feet; thence N03°34'31" E, 463.07 feet; thence N81°13'27" E, 260.83 feet; thence N01°57'00" W, 413.54 feet; thence N84°35'27" E, 193.60 feet; thence N00°29'15" W, 589.25 feet to a point on the north line of said SW 1/4; thence N89°41'05" E along the north line of said SW 1/4, 250.08 feet to the NE corner of said SW 1/4; thence S00°21'50" W, 2636.36 feet to the point of beginning, all being subject to road rights-of-way of record.

BENCHMARK:
 135TH ST. W. & 13TH ST. N. - CITY OF WICHITA DISC
 AT SOUTHWEST CORNER OF INTERSECTION,
 30.00' S. OF E. OF 13TH ST. N.,
 35.00' W. OF E. OF 135TH ST. W.
 ELEV. = 1358.25 CITY DATUM
 (1358.65 NGVD29)

SMALL RAILROAD SPIKE IN 2ND H.P. W. OF 135TH ST. W.
 ON SOUTH SIDE OF 13TH ST. N. (N. FACE OF H.P.).
 ELEV. = 1359.50 NGVD29

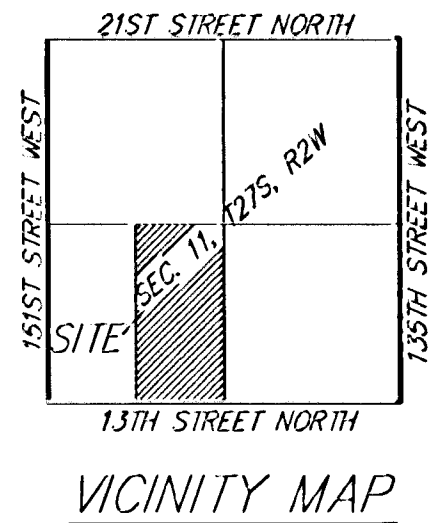
SMALL RAILROAD SPIKE IN 4TH H.P. W. OF 135TH ST. W.
 ON SOUTH SIDE OF 13TH ST. N. (N. FACE OF H.P.).
 ELEV. = 1368.64 NGVD29

135TH ST. W. & 13TH ST. N. - CITY OF WICHITA DISC
 28.00' E. OF E. OF 135TH ST. W.
 ELEV. = 1357.73 NGVD29

RESERVES "A" AND "B" ARE RESERVED FOR ENTRY MONUMENTS,
 LANDSCAPING, OPEN SPACE, STREETS, DRAINAGE PURPOSES, AND
 UTILITIES.

RESERVE "C" IS RESERVED FOR LANDSCAPING, LAKES, OPEN SPACE,
 DRAINAGE PURPOSES, SWIMMING POOL, RECREATIONAL USES,
 AND UTILITIES AS CONFINED TO EASEMENTS.

- SP = Power Pole
- SSM = Sanitary Sewer Manhole
- T = Tree
- W = Well
- W-C = Cased Well
- AY = City Anchor
- HWP = High Water Pole
- MB = Mail Box
- R/W = Right of Way
- R = REBAR W/ "BAUGHMAN" CAP (SET)
- ⊙ = REBAR (FOUND)
- ⊗ = IRON (FOUND)
- ⊙ = 1" STEEL CAP W/ "SURVEY MARK" (FOUND)
- ⊠ = STONE (FOUND)
- (M) = MEASURED
- (D) = DESCRIBED
- (P) = PLATTED
- (C) = CALCULATED

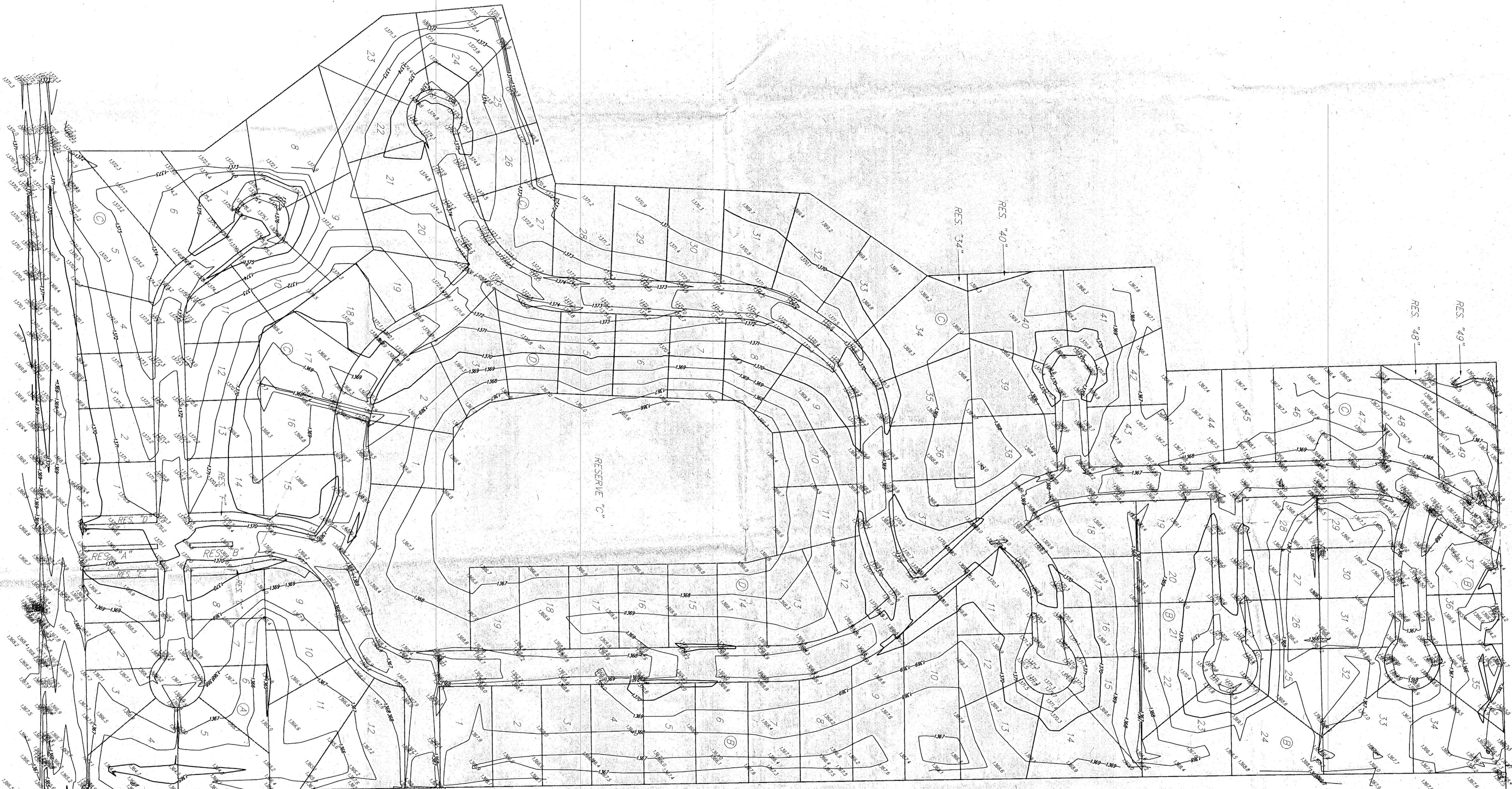
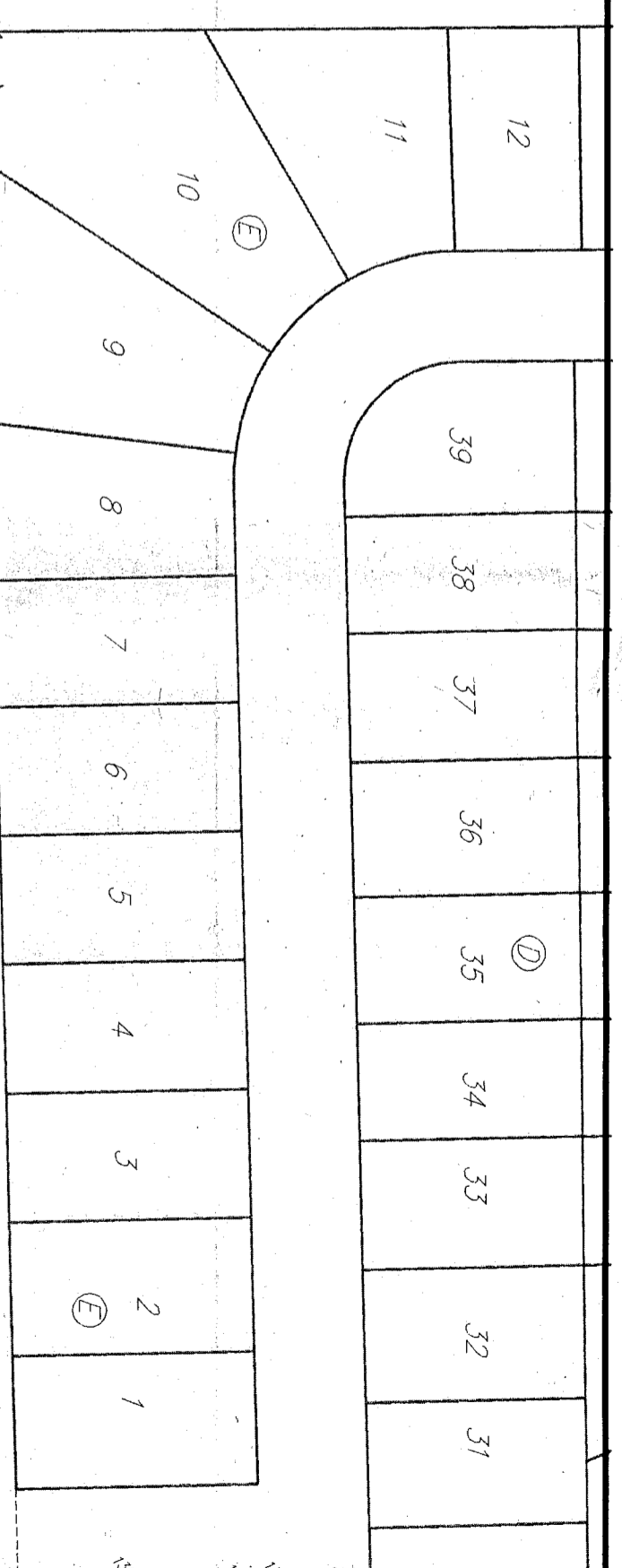


10 OCTOBER 2005

Baughman Company, P.A.
 315 E. 10th St., Wichita, KS 67211 P 316.263.7171 F 316.263.0149
 Baughman ENGINEERING | SURVEYING | PLANNING | LANDSCAPE ARCHITECTURE
 F:\PLAT\BLACKSTONEADDITION\DWG\BLACKSTONEADDITION.DWG

EXHIBIT

BLACKSTONE ADDITION WICHITA, SEDGWICK COUNTY, KANSAS



State of Kansas) SS
Sedgwick County)
We, *Baughman Company, P.A.*, Surveyors in aforesaid
county and state do hereby certify that the elevations and
contours as depicted on the face of this drawing are
representing NAVD88 datum.

Michael G. Conner
Michael G. Conner
LS-971
Professional Engineer
No. 123456789

