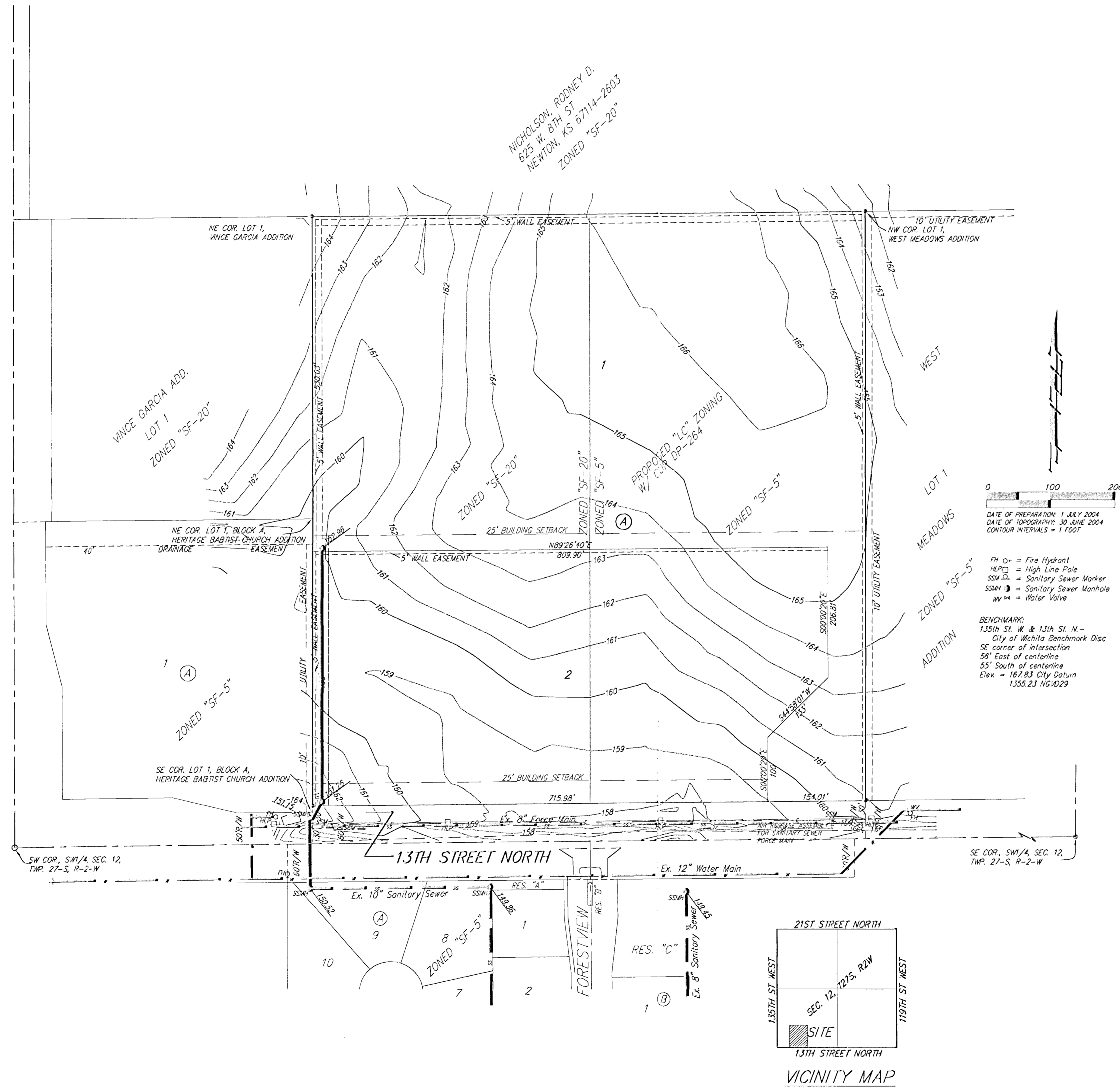


UTILITY PLAN  
**BLATTNER ADDITION**  
 WICHITA, SEDGWICK COUNTY, KANSAS



**LEGEND:**

	Proposed 8" Water Line
	Proposed Fire Hydrant
	Proposed 8" Sanitary Sewer
	Proposed 10" Sanitary Sewer
	Proposed Manhole
	Existing Manhole
	Existing 8" Sanitary Sewer
	Existing 10" Sanitary Sewer
	Existing Manhole (to be removed)

DATE OF PREPARATION: 1 JULY 2004  
 DATE OF DISSEMINATION: 30 JUNE 2004  
 CONTOUR INTERVALS = 1 FOOT

BENCHMARK:  
 1.351th St. W. & 13th St. N. -  
 City of Wichita Benchmark Disc  
 SE corner of intersection  
 56' East of centerline  
 55' South of centerline  
 Elev. = 167.83 City Datum  
 1.555.23 NGVD23

