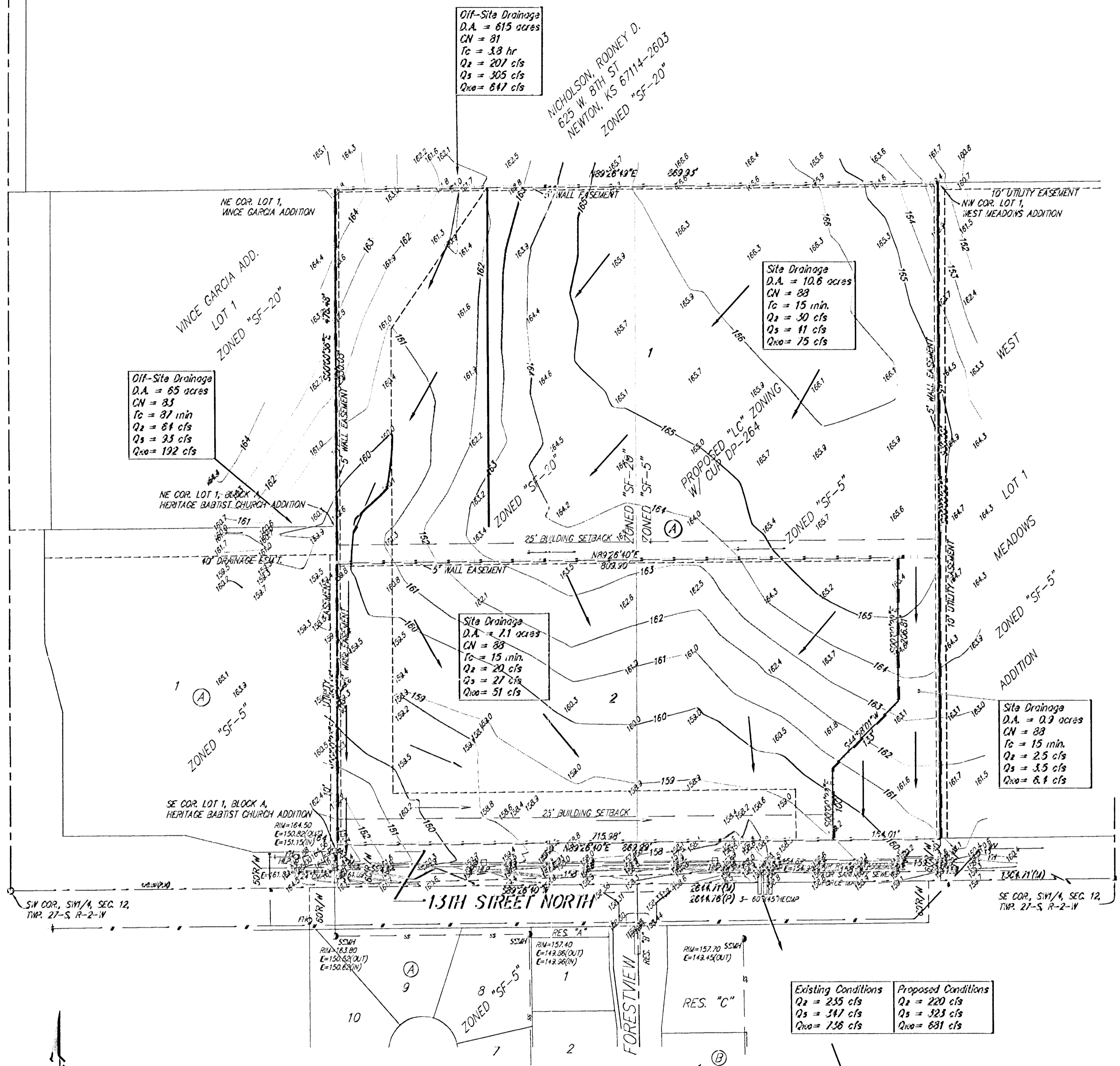
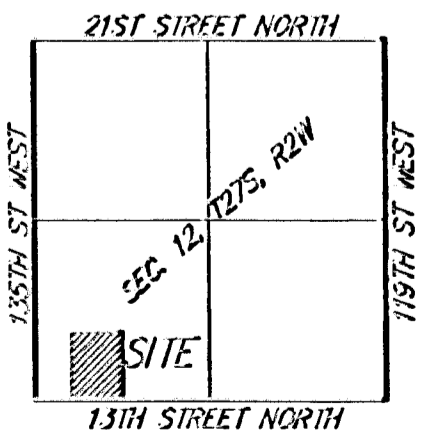
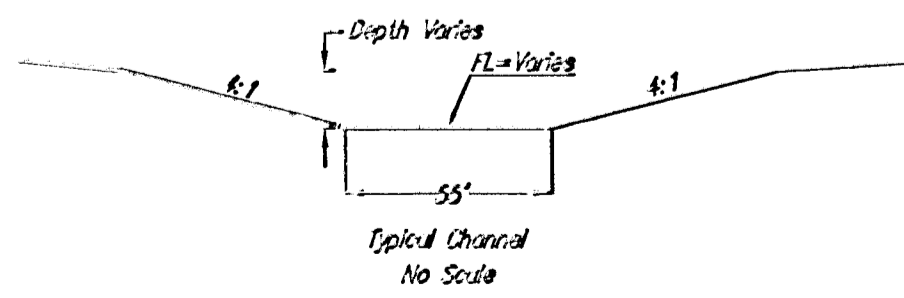
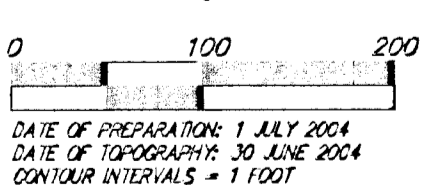


DRAINAGE PLAN BLATTNER ADDITION WICHITA, SEDGWICK COUNTY, KANSAS



FH = Fire Hydrant
 HLP = High Line Pole
 SSM = Sanitary Sewer Marker
 SSMH = Sanitary Sewer Manhole
 W = Water Valve

 BENCHMARK:
 135th St. N. & 13th St. N. -
 City of Wichita Benchmark Disc
 SE corner of intersection
 56' East of centerline
 55' South of centerline
 Elev. = 167.83 City Datum
 1355.23 NGVD23



NOTE:
ADDITIONAL BUILDING SETBACKS PER COMMUNITY UNIT PLAN DP-28A.

NOTE:
A master grading plan for drainage has been developed for this subdivision and is on file with the City of Wichita, Kansas. All drainage easements, right-of-ways, or reserves shall remain at established grades or as modified with the approval of the City Engineer of the City of Wichita, Kansas. No obstructions which impede the flow of this drainage system be allowed.

Note: Peak discharge rates were determined using the HEC2 Software program Pond Pack. This software accounts for the time distribution of the hydrographs of the areas involved.

Revised 27 JULY 2004

Baughman Company, P.A.
 315 Ellis St. Wichita, KS 67211 P 316-262-7771 F 316-262-6149
ENGINEERING | SURVEYING | PLANNING | LANDSCAPE ARCHITECTURE

F:\PLAT\BLATTNERADDITION\DWG\BLATTNERP.DWG-RXR